

Tuiala Junior Ah Sam	Bachelor of Engineering Technology	18006013
Edmund Changwai	Bachelor (Hons) Construction Engineering	15924253
Bharat Rasali	Bachelor (Hons) Construction Engineering	16938911
Madelein Hoffman	Bachelor (Hons) Construction Engineering	16960253
Gustavo Viana	Bachelor (Hons) Construction Engineering	16954528

Construction Cost

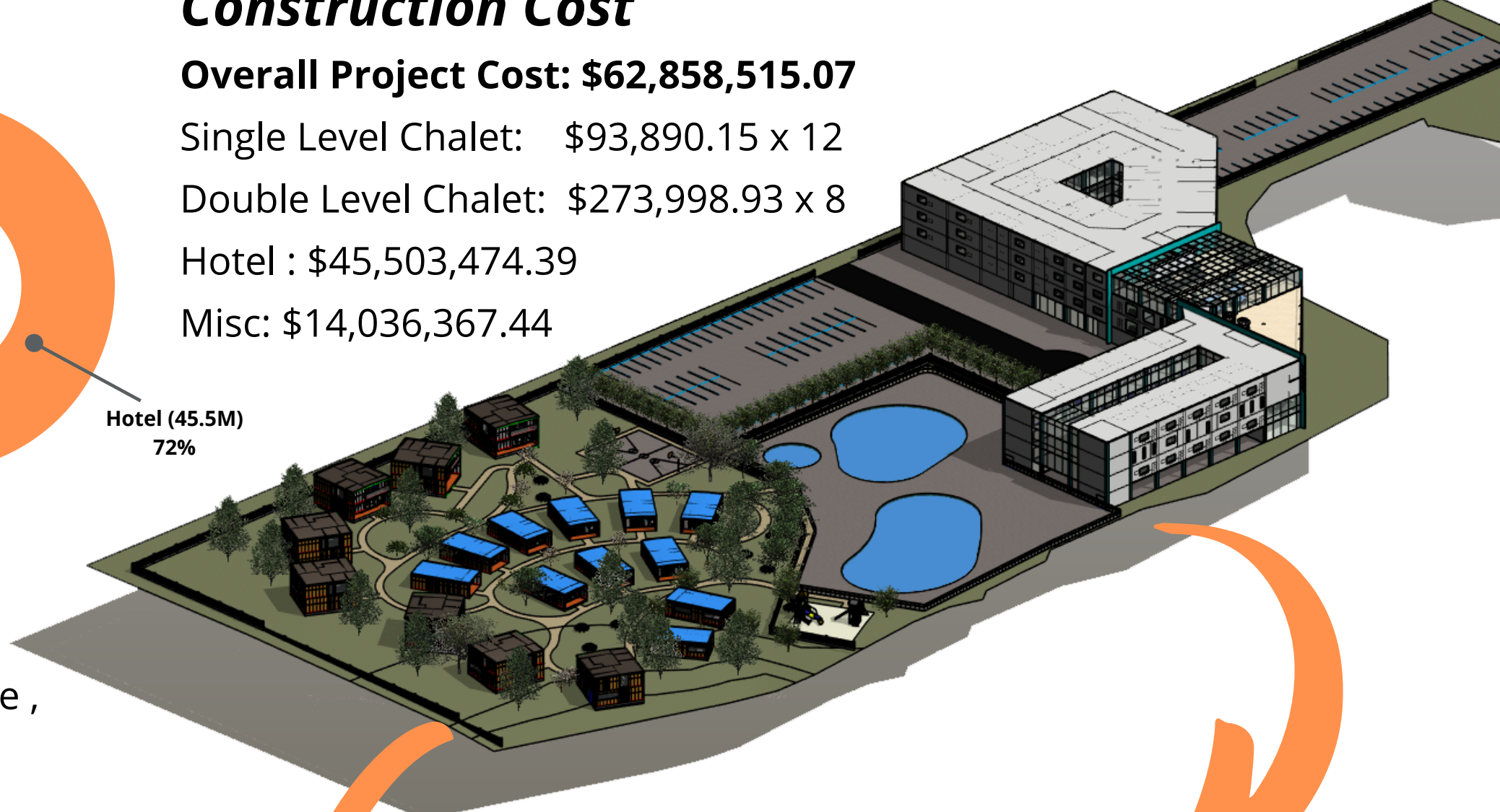
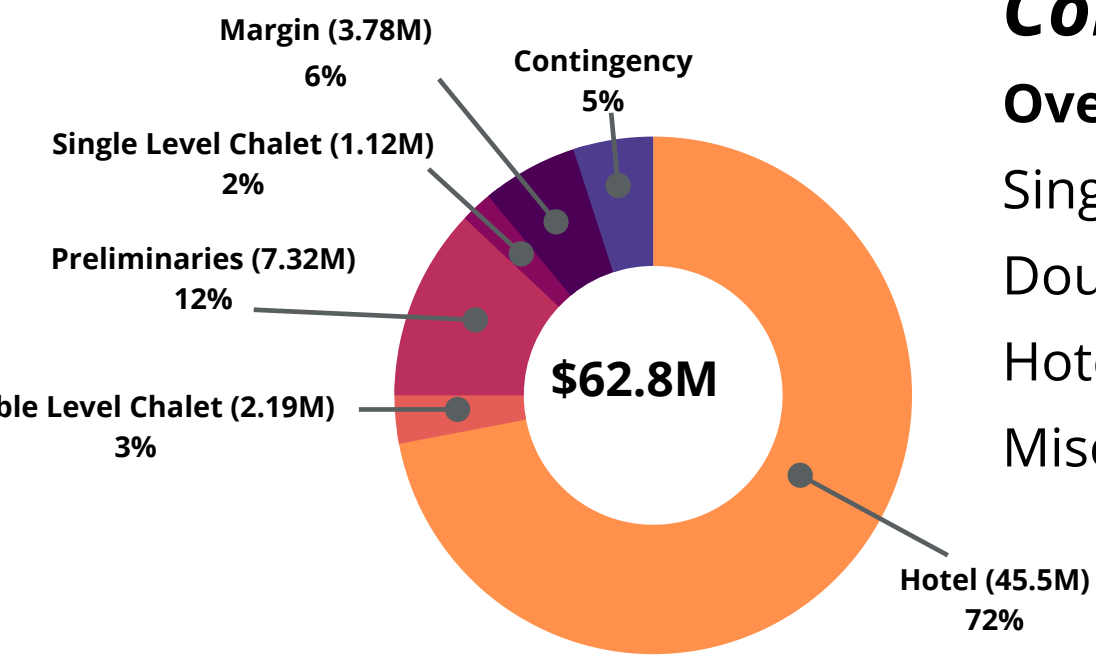
Overall Project Cost: \$62,858,515.07

Single Level Chalet: \$93,890.15 x 12

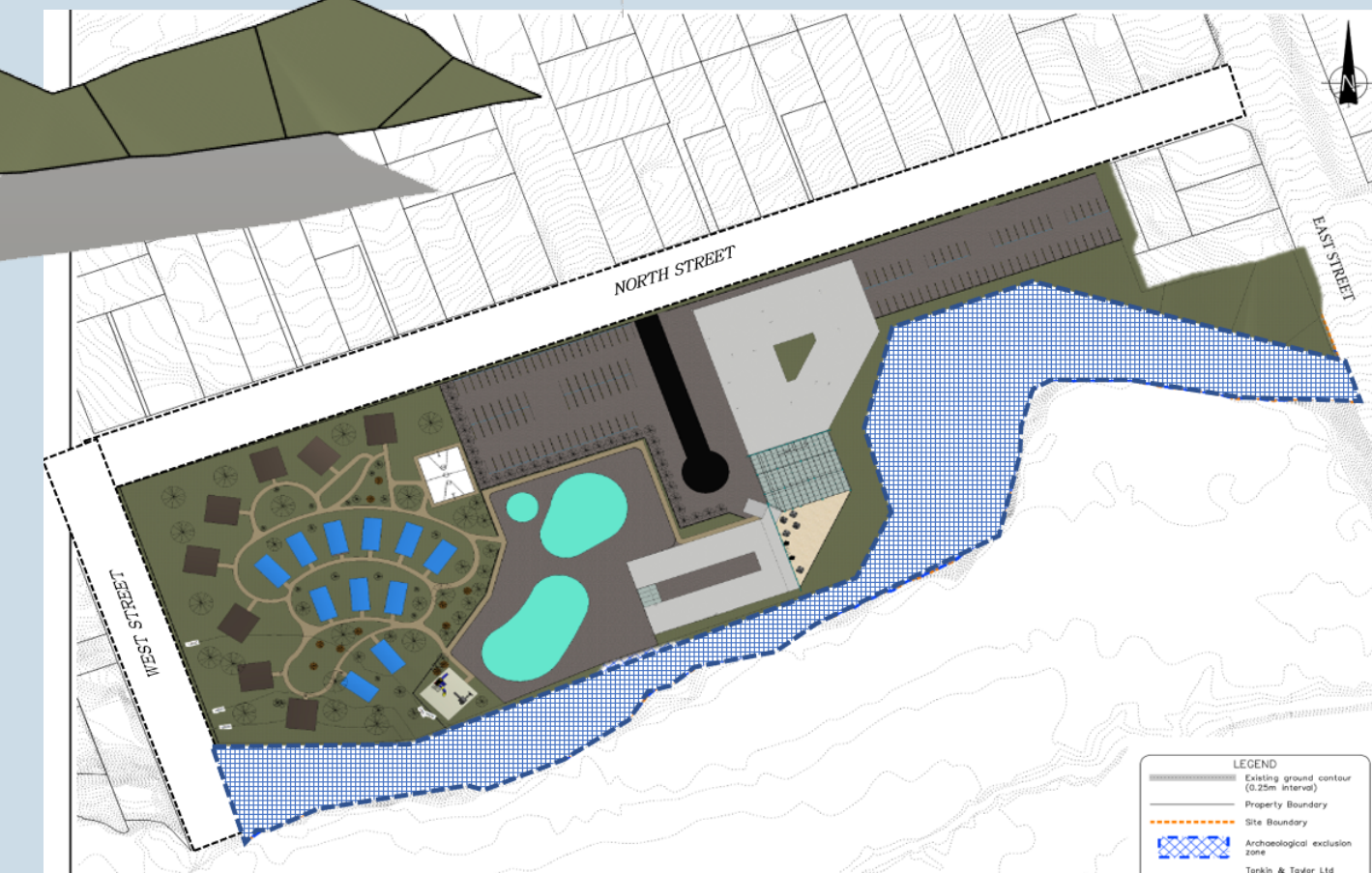
Double Level Chalet: \$273,998.93 x 8

Hotel: \$45,503,474.39

Misc: \$14,036,367.44



Proposed Site Layout



Project Details

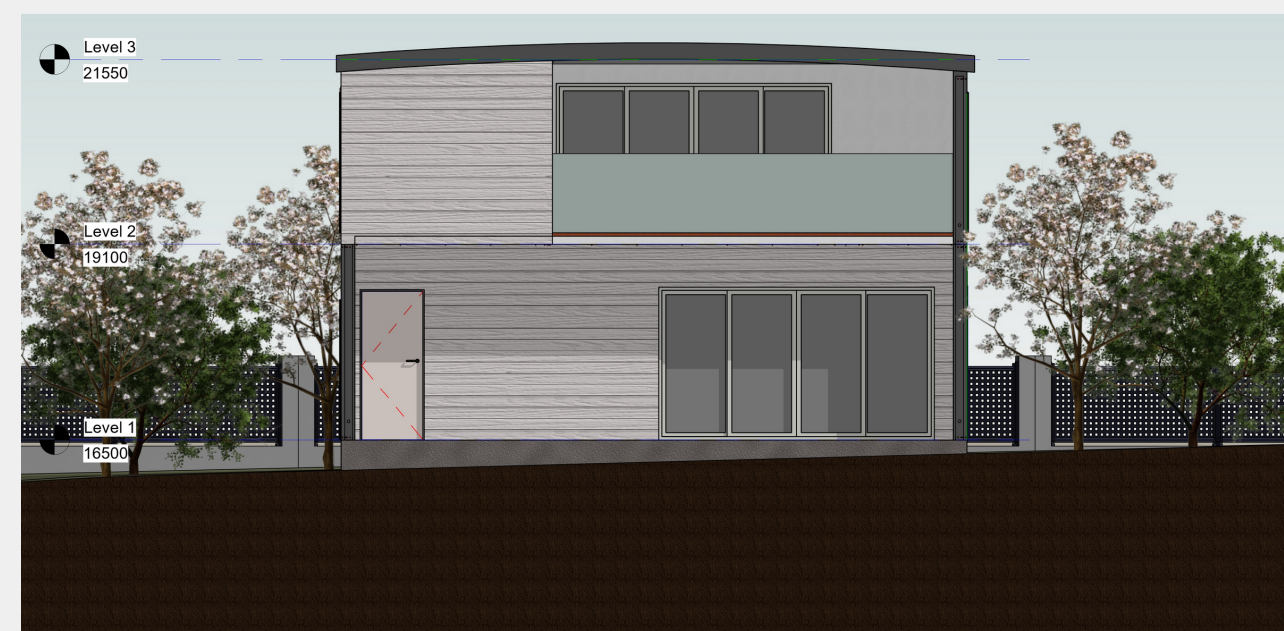
Location: Devonport, Northshore, Auckland 0622

Site Area: 4.2ha

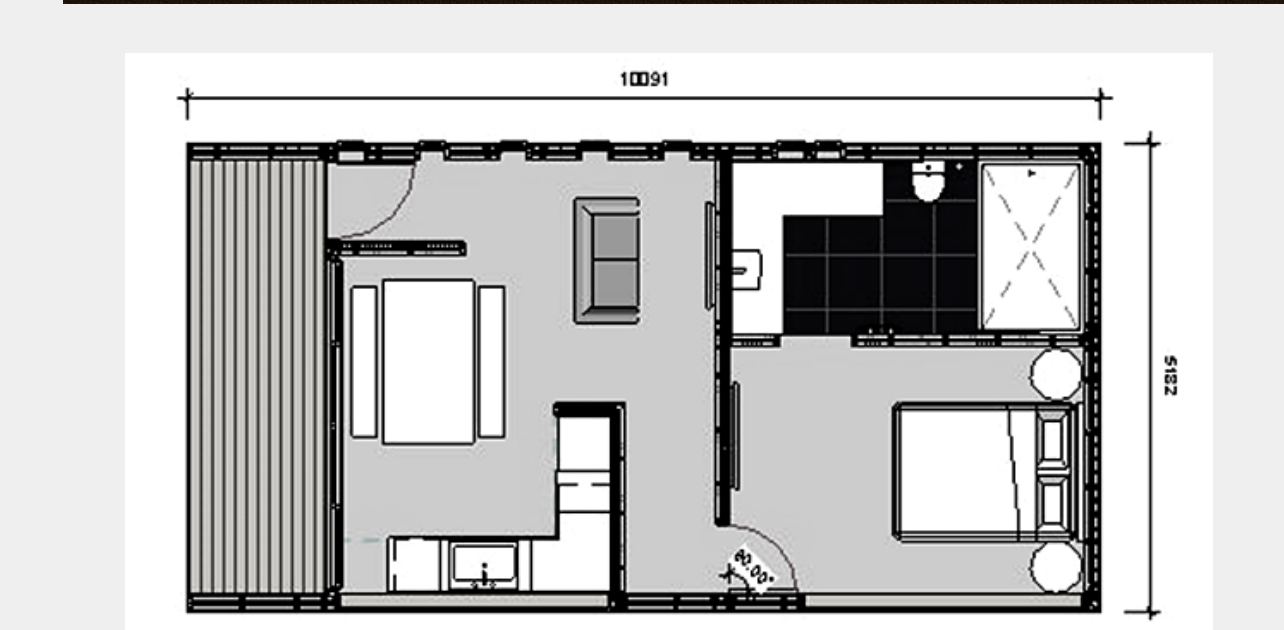
Archeological exclusion zone running along the bank of Ngataranga Bay.

The scope includes a 4-story hotel, amenities tower, and single and double level chalets to accommodate individuals and families.

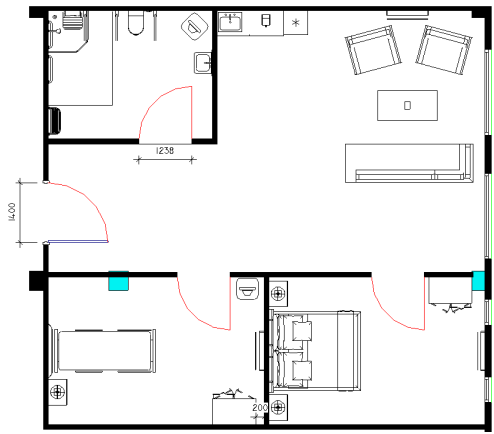
DOUBLE STORY CHALET



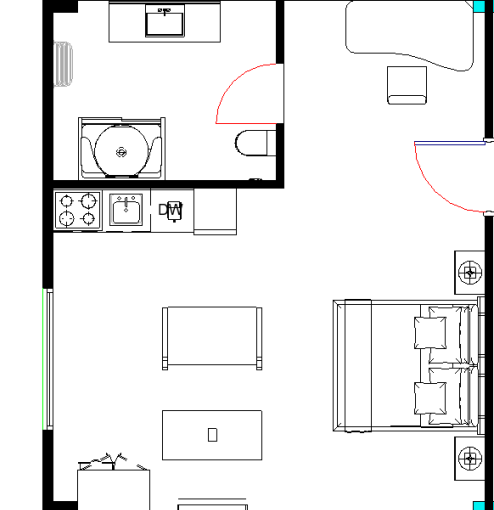
SINGLE STORY CHALET



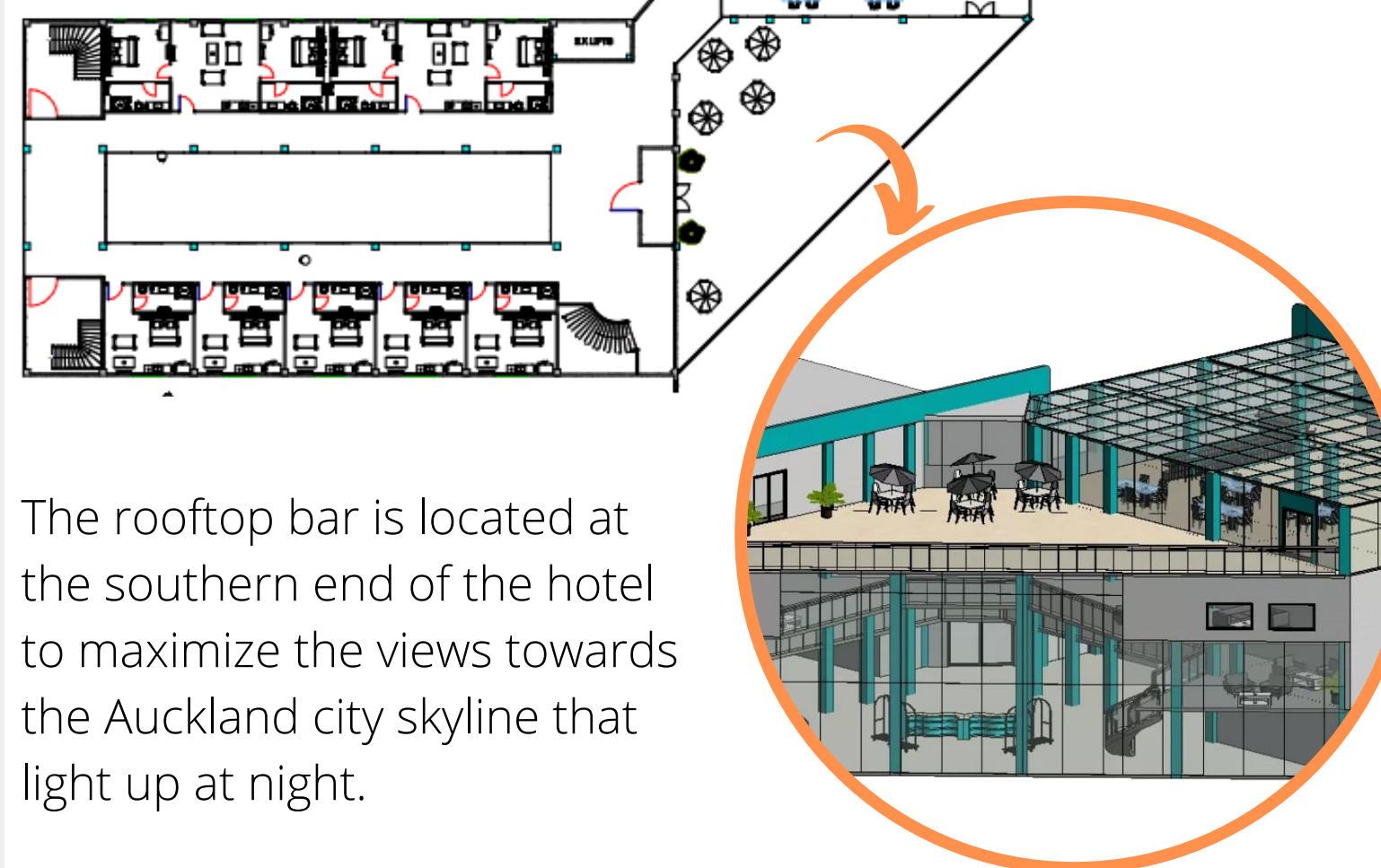
Accessible Room



Single En-suite



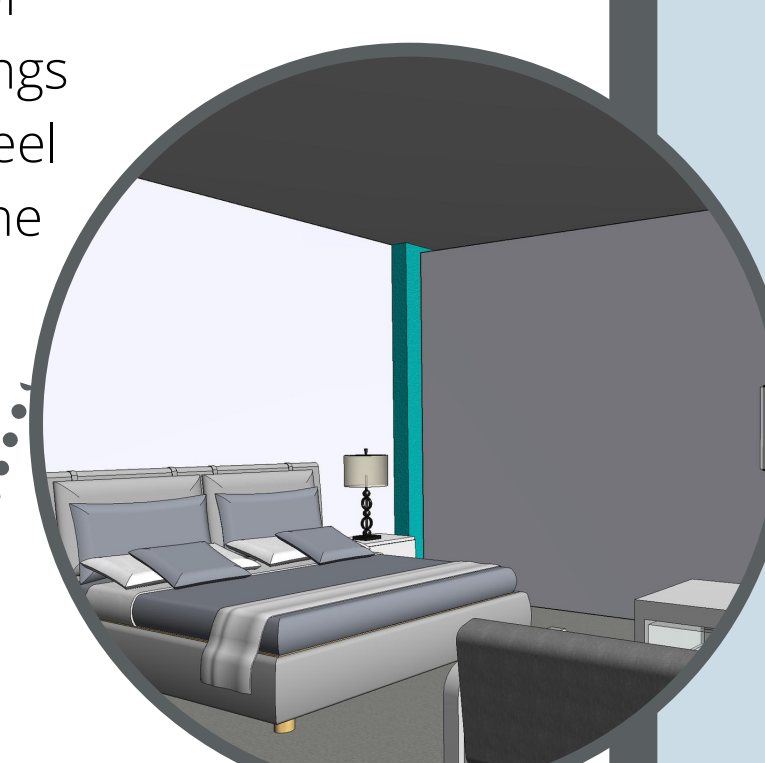
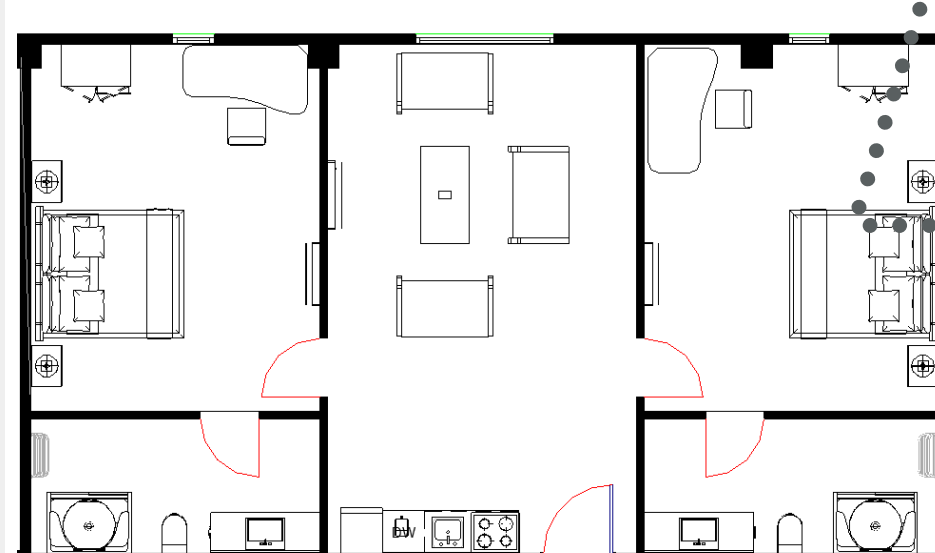
Hotel Level 4



The rooftop bar is located at the southern end of the hotel to maximize the views towards the Auckland city skyline that light up at night.

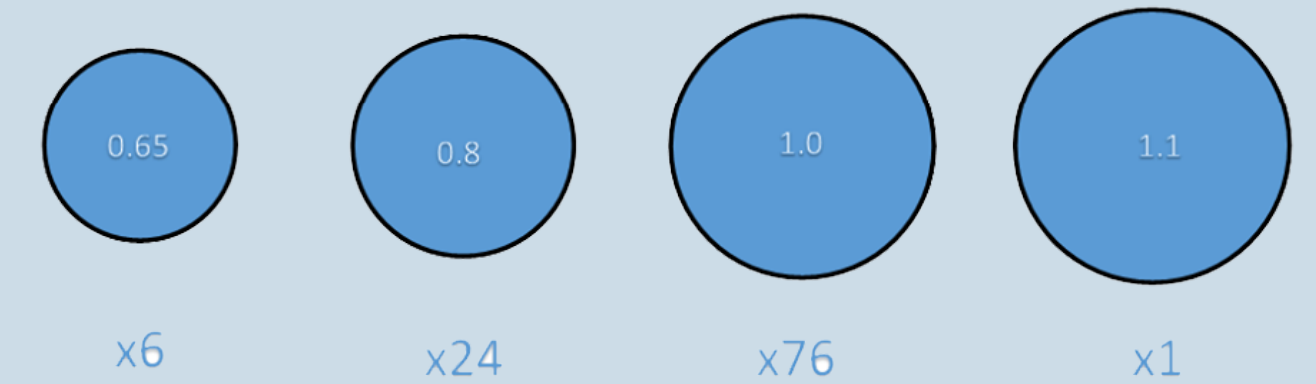
Sound barriers at both ends of the bar reduce levels of noise in the direction of the chalets and other residential buildings in the vicinity. Glass and blue coated steel framing was selected as materials for the bar to provide an aesthetically pleasing modern design element.

Double En-suite



Geotechnical Pile Size

127x Concrete Pile Foundation
25m Deep

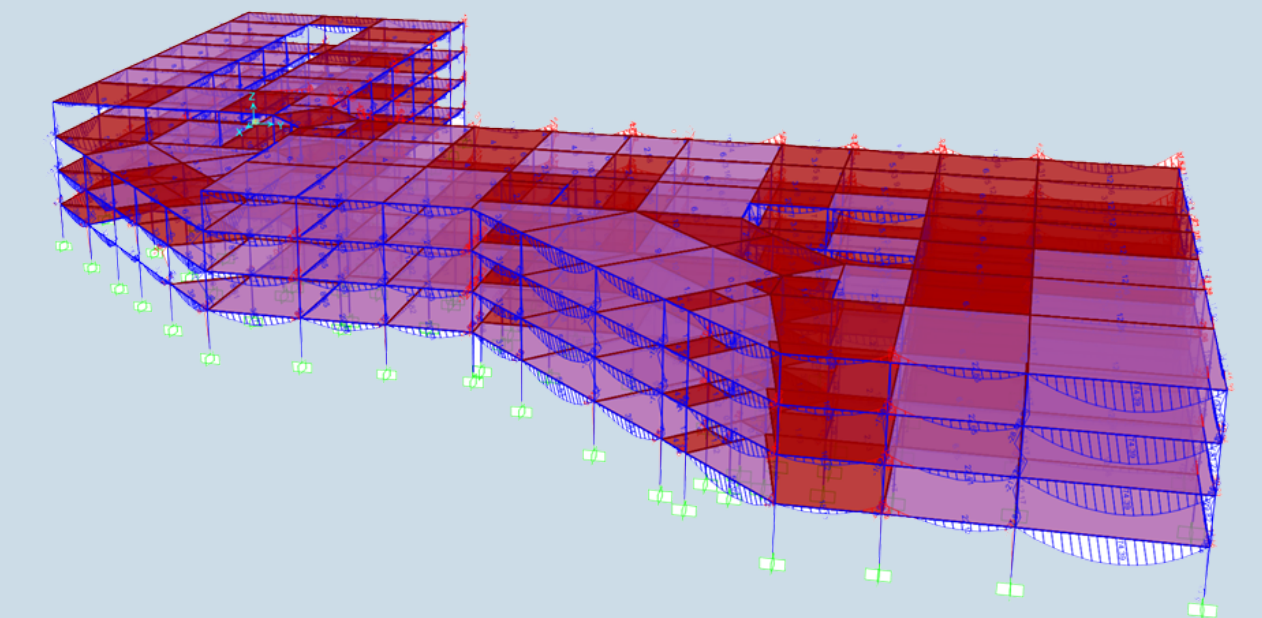


Structural Analysis

Assigned Structural Member Sizes;

Beam: 360 UB 56.7

Column: 310 UC 158



Construction Planning

For this particular project construction of hotel, chalets and any other external works is to be conducted simultaneously.

Construction Start Date: 11 Jan 2021

Construction End Date: 30 September 2022

Construction Duration: 451 days

