

AUT

TE WĀNANGA ARONUI
O TĀMAKI MAKAU RAU

LAW

UNDERGRADUATE & POSTGRADUATE
PROGRAMME GUIDE 2025



TOP 50
WORLDWIDE
Young University

AUCKLAND
UNIVERSITY
OF TECHNOLOGY

Nau mai, haere mai ki AUT WELCOME TO AUT

E ngā mana, e ngā reo
E te iti, e te rahi
E ngā mātāwaka o ngā tōpito o te ao
Ngā mahuetanga iho e kawe nei i ngā
moemoeā o rātou mā
Tēnā koutou katoa

Piki mai rā, kake mai rā,
Nau mai, haere mai ki tēnei o ngā wānanga
Whakatau mai i raro i te korowai āhuru o Te Wānanga
Aronui o Tāmaki Makau Rau

Te whakatupu i te kōunga, i te mana taurite me ngā
tikanga matatika, i ngā pūkenga ako,
i ngā pūkenga whakaako me te āta rangahau hei hāpai
i ngā hāpori whānui o te motu, otirā, o te ao.

To the prestigious, the many voices
The few, the great
To those of all races and creeds
We who remain to fulfil the dreams and
aspirations of the ancestors
Greetings one and all

Climb, ascend
Embark on the journey of knowledge
Let us at AUT embrace and empower you
To strive for and achieve excellence

To foster excellence, equity and ethics in
learning, teaching, research and scholarship,
and in so doing serve our regional, national
and international communities.

Cover

The cover design represents a tukutuku (ornamental lattice work) panel with the Poutama pattern woven onto it. This pattern symbolises levels of attainment, advancement, and personal growth, striving for betterment. The Poutama reflects what AUT does for its students: educate, guide and support them on their journey into a future they define, and we prepare them for. The perspective of the design enhances the concept of the journey. The overlaid design elements on top of the cover pattern show commitment to Te Tiriti o Waitangi and Te Ao Māori being at the foundation of everything; an underlying base to support and enhance all aspects of AUT.

Disclaimer: Although every reasonable effort is made to ensure accuracy, the information in this document is provided as a general guide only for students and is subject to change. All students enrolling at AUT should consult its official document, the AUT Calendar, which is available online at aut.ac.nz/calendar, to ensure that they are aware of, and comply with, all regulations, requirements and policies. The information contained in this programme guide was correct at the time of print, December 2023.

Ngā ihirangi CONTENTS

About AUT

- 02 Why study at AUT?
- 04 Student life
- 06 Support for law students
- 07 Student societies
- 08 Prizes and awards

Course information

Bachelor of Laws

- 10 Overview
- 12 Course planner

- 15 Bachelor of Laws (Honours)
- 16 Certificate in Legal Studies
- 17 Postgraduate Certificate in Law
- 18 Master of Laws
- 20 Master of Philosophy
- 21 Doctor of Philosophy

Applying for your programme

- 22 University entrance
- 24 Fees and scholarships
- 26 How to apply
- 28 Find out more



He aha ai e ako ki AUT?

WHY STUDY AT AUT?

Scan this QR code for details about courses, where your study could lead and stories about our great graduates and students.



1 2



1 You can also study law at the AUT South Campus 2 As a law graduate you'll develop skills that are sought after by law firms, community organisations and other employers 3 The AUT City Campus offers a modern university environment in the heart of Auckland City 4 Our law programmes are developed in close consultation with the legal profession



3 4



New Zealand's leading modern university

AUT is proud to be one of the world's best modern universities. Times Higher Education has ranked us in the top 1% of universities in the world, the top 50 universities under 50 years of age, the top 5% of universities for social impact, and number one in Aotearoa New Zealand for international outlook. AUT has the most diverse law school in the country. You'll study alongside classmates from different backgrounds, countries and a variety of ages, and become part of our diverse and inclusive student community. As an AUT law student, you're enrolled in a highly respected and versatile degree that will prepare you for a career in law or a wide range of other areas where you can really make a difference.

A thriving community of law alumni

AUT is where talent meets opportunity, and we love seeing so many of our graduates shape successful careers in top law firms or in business, government, media and community organisations. Law graduates have one of the highest employability rates of all university graduates, and AUT law graduates are no exception. When you graduate with your law degree you automatically become a member of the AUT Law School Alumni Association (AUTLSAA), which makes it easy to stay in touch with the people you've met while studying and make connections with alumni from other years. We're proud of the strong connections with our law alumni, and we often bring them back into the classroom to share their experiences and learnings with current students.

Preparing you for the future

At the AUT Law School, you'll develop strong problem-solving, communication and advocacy skills. Alongside core traditional law skills, your studies include hands-on learning through practical electives, moots, dispute resolution exercises, negotiations and drafting court documents. We combine large lectures with smaller, interactive classes and workshops where you can collaborate with other students and academic staff. You also have access to outstanding resources, including a variety of legal databases containing cases, legislation, commentary and other resources. To complement your learning in class, you can also apply for clerkships and other internship positions. This well-rounded experience stands out to employers and will help you build a strong foundation for your future, no matter where your career will take you.

An innovative learning environment

Our university campuses feature modern buildings that don't just win architecture awards but also offer excellent environments where you can collaborate with your classmates and develop skills that help you stand out in your future career in law. We're proud of our five-star ranking for teaching and facilities, awarded by the world university rankings organisation QS. Whether you're studying law at our City Campus in the heart of the Auckland CBD or at the South Campus in Manukau, you'll learn in state-of-the-art buildings that were created using sustainable principles and offer inviting lecture theatres, auditoriums and research spaces.

Oranga Taura

STUDENT LIFE

AUT is a modern and innovative university with endless opportunities, and a supportive culture that celebrates diversity and is committed to improving our local and global communities. Our students are at the heart of everything we do, and we're proactive in enabling them to succeed and be ready for any challenge in front of them.

Our Student Hubs – your place to get the support you need

AUT offers some of the most comprehensive student support services in New Zealand, and our Student Hub is where you can learn more about these services. Our professionally qualified staff include social workers and occupational therapists who can support our diverse student community. Our Student Hubs are available both online and across our campuses, so you can get help and support when and where you need it.

Getting you started on your uni journey

Studying at university is exciting and can be quite an adjustment. That's why AUT helps new students transition to university life by delivering a wide-ranging orientation programme at the start of each semester. We also offer activities throughout the semester to transition you into university life. AUT's app also provides up-to-date news, events, and information about AUT anytime, anywhere.

Helping you achieve your academic goals

We do everything we can to help you achieve your academic goals and set you up for a successful career. You'll have access to all the people, resources and technology you need to make the most of your learning opportunities. Our services include academic skills support through our library and their learning services, peer mentoring for help with assessments, adaptive technology, 24/7 academic support through Studiosity, free technology access and financial assistance, as well as tailored support for our postgraduate research students.

Supporting your wellbeing

Our students' health and wellbeing are our highest priority, and AUT is experienced in delivering support to aid students' overall wellbeing. This includes services like 24/7 security on campus; peer support from over 300 student ambassadors, navigators, peer advisors, RUOK advisors and the TalkCampus app; financial assistance; medical, learning and IT support, as well as physical and mental wellbeing support. We actively encourage students to be aware of their wellness needs – mind, body, and spirit. As an AUT student you have access to free and confidential counselling sessions, peer support and programmes to develop better self-knowledge and resilience.

Enabling opportunities for a vibrant uni experience

We want you to make the most of university life, and have fun and grow during your time with us. That's why we offer a range of spaces and initiatives for students including clubs, events, sporting opportunities and state-of-the-art recreational facilities. Our clubs are student-led and cover social, sustainability, cultural and academic interests. If you can't find something you enjoy, you're always welcome to create something new!

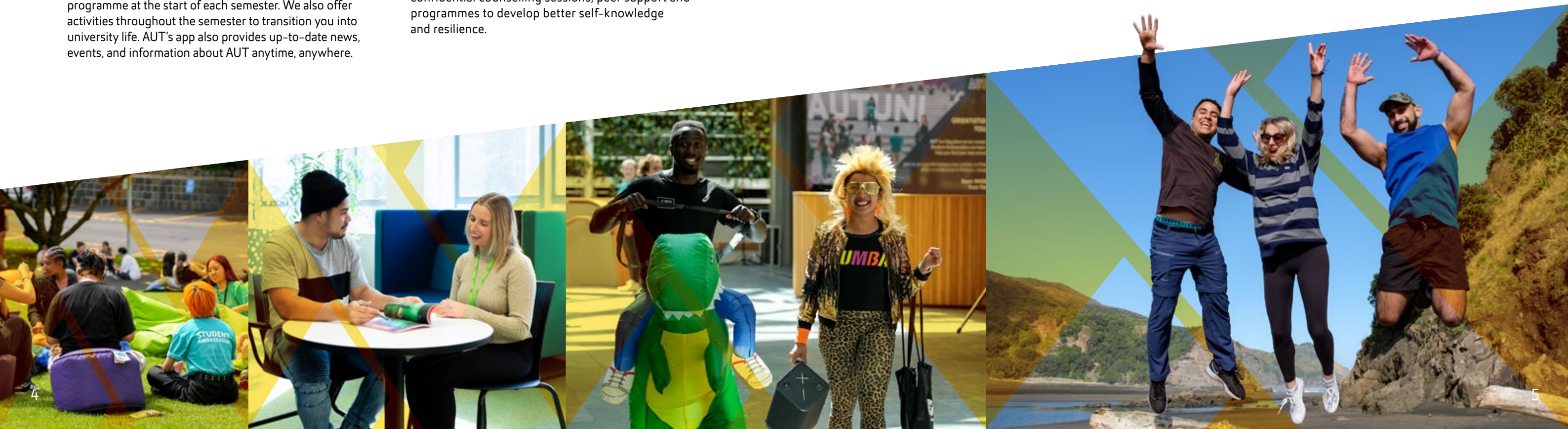
Celebrating our people

We celebrate diversity and our commitment to Te Tiriti o Waitangi with passion, curiosity and pride. We have a strong commitment to Māori advancement, and Pacific wellbeing and success, and have dedicated teams to support all students at AUT. We were the first university in New Zealand to achieve the Rainbow Tick. We're committed to equity of access and opportunity for students, staff and visitors, and support the principles of Kia Ōrite: Code of Practice for an inclusive tertiary environment.

Our dedicated teams include disability services, and rainbow and international student support. Our Student Association (AUTSA) advocates and represents the interests of all AUT students, and shares students' voices through its Debate magazine.

Beyond learning and into employability

Our services, competitions and awards offer you enriching life experiences that will support your career once you graduate. These opportunities can help you gain an edge in the marketplace through workplace experience, international exchanges, industry connections, and CV and interview preparation for when you're ready to start your career. Our Innovation Challenge is also a great incubator for your entrepreneurial ideas and can help you bring your ideas to market.



Support for law students

We offer a close-knit, supportive environment that makes it easy to get advice or guidance if you ever need it. This is one of many reasons why so many of our graduates recommend us as a great place to study.

Law School Student Support

Starting university can be a challenging time and we're here to help you succeed in your studies, with academic, social, and mentoring support.

We can help you access all the Law School and university services on offer. We provide course advice and help you plan your individual path of study.

We can also help with any questions you may have about enrolment, timetables, course information, exams, assessments and graduation.

Contact law@aut.ac.nz to set up an online appointment, call us on +64 9 921 9657 or email law@aut.ac.nz

Student societies

As an AUT law student you have access to an ever-growing range of extracurricular opportunities and law societies. Student societies are run by students and are a great way to get to know more of your peers and make the most of your university experience.

AUT Law Students' Society (AUTLSS)

AUTLSS is a fully integrated member of the New Zealand Law Students' Association Incorporated, and exists to further the interests of students enrolled in the AUT law programmes. We have established strong links with a number of law firms and organisations, including the Auckland District Law Society Inc., the College of Law, the Institute of Professional Legal Studies, and the Arbitrators and Mediators Institute of New Zealand.

To find out more visit facebook.com/autlss

Te Aro Ture (TAT)

Te Aro Ture is a student-run organisation designed to provide law students with the support to achieve the best academic outcomes, incorporating Tikanga values and principles. Throughout the year, the roopu hosts a number of events, from mentoring sessions and workshops to professional meet and greet evenings, all to ensure that our tauira are well-prepared, not only for their exams but also for the future as legal practitioners.

To find out more visit facebook.com/tearoture

AUT Pasifika Law Students' Association (AUTPLSA)

AUTPLSA is dedicated to the progression and success of Pacific Island law students here at AUT. We believe that your overall success will require hard work, determination and a supportive network of people who want to see

you achieve. AUTPLSA was created to be that reliable network students can look to for support. We aspire to make a difference in your learning experience, push you to aim higher and do well as you make your way through law school.

To find out more visit facebook.com/groups/AUTPLSAMembers

Moana Nui AUT

Moana Nui is a club for Māori and Pacific students studying business and law (Te Ara Pakihi Me Te Ture) to connect and learn together. We offer study and assessment support as well as opportunities for internships and industry engagement experience.

To find out more visit facebook.com/groups/1135624860695147

AUT Mooting Society

The AUT Mooting Society gives law students first-hand practical insight into mooting. We provide ongoing training workshops and participate in several national level competitions throughout the year. You can improve your oral advocacy skills and confidence, and also have opportunities to engage with firms.

To find out more visit facebook.com/AUTMootingSociety



"AUT has a very community and whānau-oriented approach to students and their learning journey. You can connect directly with your lecturers, journey together with other like-minded students and share knowledge with each other without being judged. As a Pacific person, I've found that AUT provides a platform with a diverse and inclusive focus. That is very helpful to those students who are desperate to break negative historical cycles that affect them and their community. From a mature student point of view, AUT is welcoming to adult students who want to pursue a different area of profession. And that makes AUT my preferred choice of university to study law."

Sauniuni Seleni
Senior Associate – Commercial, Bank of New Zealand
Bachelor of Laws



"AUT has a friendly environment and many activities organised for students. AUT students are very friendly and I've made many lifelong friends here. The law elective course choices are good, and the AUT Law School hosts competitions throughout the year, including mooting, negotiation, client interviewing and cross-examinations. I've also really enjoyed the events where industry professionals are invited to AUT to engage with students, and provide insights and advice. Try to participate in as many events, activities and competitions as possible while you're at university and cherish the chances AUT has prepared for you."

Regan Ujara
3rd-year student, Bachelor of Laws
Master of Human Rights with Honours (Second Class, Second Division)
Bachelor of Arts in Conflict Resolution and Criminology

Prizes and awards

The annual Dean’s List Awards acknowledge the achievements of the top students in all law courses.

The following named prizes are also awarded. The AUT Law School would like to acknowledge and thank all firms, organisations and individuals who continue to support our students by sponsoring prizes.

Part I awards

- Law School Prize for the top student overall in Part I courses – City Campus
- The College of Law New Zealand Prize for the top student overall in Part I courses – South Campus
- Law School Prize for the top student in Personal Property

Part II awards

- CCH Prize for Real Property
- ETPC (New Zealand Estate and Tax Planning Council) Prize for Trusts
- STEP (Society of Trustees and Estate Practitioners New Zealand) Prize for the top student in Trusts
- LexisNexis Prize for the top student in Public Law
- Law School Prize for the top student in Law of Contracts
- Law School Prize for Law of Torts
- LexisNexis Prize for the top student overall in Part II courses

Parts III and IV

- Law School Prize for the top student in Criminal Law
- Law School Prize for the top student in Advanced Private Law
- Law School Prize for the top student in Company Law
- The College of Law New Zealand Prize for the top student in Legal Ethics
- Cambridge Press Prize for the top student in Public International Law

- A J Park Intellectual Property Prize
- ETPC (New Zealand Estate and Tax Planning Council) Prize for Trusts and Fiduciary Obligations
- New Zealand Insurance Law Association Prize for the top student in Insurance Law
- SBM Legal Prize for the top student in Employment Law

Overall awards

- Te Hunga Roia Māori o Aotearoa/The Māori Law Society Prize for the top graduating Māori student
- Pacific Lawyers’ Association Pacific Island Law Student Excellence Award for the top graduating Pacific student
- Meredith Connell Prize for the top graduating student of Chinese descent
- Law School Honours Award for the student with the best mark in the honours dissertation
- The Law School Award for the student with the best undergraduate record in the LLB or LLB(Hons)

Special awards

- The Anton Botica Memorial Prize for Employment Law
- The Matt Weber Memorial Prize for Commercial Transactions
- Law Dean’s Outstanding Contribution Award to a Graduating Student who has made an outstanding contribution to the Law School during his/her time as a student
- Law Dean’s Alumni Award to recognise a graduate’s continued contribution to the Law School

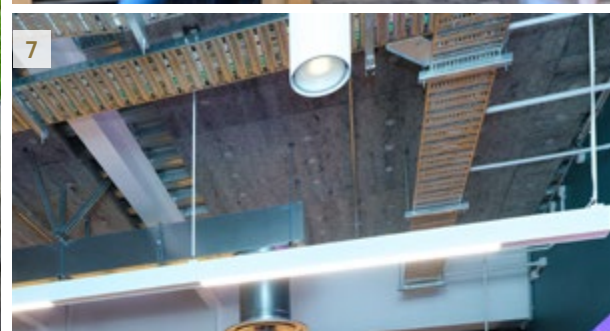
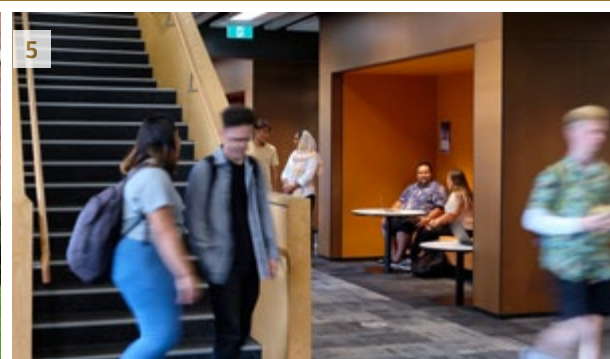


“I had been working as a registered legal executive for many years, so I was sure that law is the area I want to work in. I decided to pursue a law degree to achieve my goal of becoming a barrister and solicitor. I’m finishing my Professional Legal Studies Course at the moment and intend to be admitted to the bar soon. Studying law is a great opportunity to build connections with people who will work in the same field with you. While I was at AUT, I was especially proud of receiving the top grade for the Law of Contract course in 2021 and being awarded the Law School Prize for Law of Contract.”

Ariel Shuyin Ma
Registered Legal Executive, Martelli McKegg
Bachelor of Laws



1 There are many spaces across campus for either solo study or group work 2 You’ll have access to an extensive range of law textbooks, including those written by your lecturers 3 Join us on Ngā Wai o Horotiu marae when you need a home away from home 4 AUT’s City Campus is located in central Auckland – just minutes from the High Court 5 You can study some law courses at our South Campus in the heart of Manukau 6 Enjoy our modern lecture theatre facilities and smaller class numbers 7 Relax and catch up with friends between classes at the Te Ahuru Recreation Centre on the City Campus



Bachelor of Laws

Overview

AUT’s law degree opens the door to a wide range of rewarding careers where you can make a positive impact on people’s lives. AUT law graduates have established successful careers in a range of law firms, immigration consultancies, community organisations and commercial establishments. Our interactive lectures and regular case-study workshops develop your ability to interpret, critically analyse, reason and deliver practical solutions to legal problems. You become an articulate communicator, and confident in your understanding of legal principles and their relevance to business and community. You also develop your critical thinking and problem-solving skills, your ability to act ethically, and your sense of community and professional responsibility.

Entry requirements

Minimum entry requirements

University Entrance or equivalent

English language requirements

IELTS (Academic) of 6.0 overall with all bands 5.5 or higher; or equivalent.

Useful New Zealand school subjects

Subjects that develop a very good standard of reading, oral and written English.

Don’t meet the entry requirements?

Consider starting with our Diploma in Business.

LLB | AK1008

QUICK FACTS

Level	7
Points	480
Duration	4 years full-time, part-time available
Campus	City & South ¹
Starts	3 March 2025

What this qualification covers

PART I

You study three compulsory courses: Legal System, Legal Reasoning and Writing, and Personal Property. This makes up half of your first-year study (60 points). The other 60 points must be taken from another AUT degree, which gives you the opportunity to broaden your study and enables you to enrol in one of the double degrees. If you complete your Part I courses with at least a B grade average in the compulsory law courses, you will be offered a place in Part II. Other students may also be eligible for Part II.

PART II, III and IV

In your second year, you study five further compulsory law courses: Law of Contract, Law of Torts, Public Law, Real Property and Trusts. In your third year you study Company Law, Criminal Law, Advanced Private Law, Public International Law and choose the rest of your courses from law electives. In your final year you study Legal Ethics, as well as a selection of law electives.

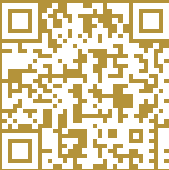
Becoming a barrister and solicitor

After completing the requirements for the Bachelor of Laws (LLB), students who want to practise law in New Zealand must:

- Complete the Professional Legal Studies Course at either the Institute of Professional Legal Studies (IPLS) or the College of Law; and
- Obtain a certificate of completion from the New Zealand Council of Legal Education (NZCLE); and
- Obtain a certificate of character from the Law Society; and
- Be admitted to the roll of barristers and solicitors of the High Court of New Zealand; and
- Hold a current practising certificate issued by the Law Society.

By completing a Professional Legal Studies course (Profs), you are able to be admitted to the bar enabling you to become a barrister and solicitor and call yourself a lawyer.

Scan this QR code for details about courses, where your study could lead, and stories about our great graduates and students.



“I wanted to be on a platform where I could encourage more Pacific women to become lawyers, doctors, engineers and the like. This drive, coupled with my love of the English language, problem solving and desire to break glass ceilings, steered me in the direction to become a lawyer. I loved how friendly everyone was at AUT. You often hear horror stories about how competitive law school is but that wasn’t the case for me. The academic staff were always willing to help, and many of my classmates were on a very similar journey to me; having finished one degree and working, then coming back to uni. I enjoy the variety and the challenges that come with interpreting the law.”

Claudette Herman
Solicitor, Suncorp New Zealand
Bachelor of Laws

1. All courses are available at the City Campus. Most compulsory courses are also available at the South Campus.

Course planner – Bachelor of Laws

	PART I	PART II	PART III	PART IV
SEMESTER 1	<div>Legal System15 PTS</div>	<div>Trusts15 PTS</div>	<div>Company Law15 PTS</div>	<div>Legal Ethics15 PTS</div>
SEMESTER 2	<div>Legal Reasoning & Writing30 PTS</div> <div>Non-law courses from any other AUT degree programme60 PTS</div> <div>Personal Property15 PTS</div>	<div>Law of Contract30 PTS</div> <div>Law of Torts30 PTS</div> <div>Public Law30 PTS</div> <div>Real Property15 PTS</div>	<div>Advanced Private Law15 PTS</div> <div>Elective course15 PTS</div> <div>Criminal Law30 PTS</div> <div>Public International Law15 PTS</div> <div>Elective course15 PTS</div> <div>Elective course15 PTS</div>	<div>Elective course15 PTS</div> <div>Elective course15 PTS</div> <div>Elective course15 PTS</div> <div>Elective course15 PTS</div> <div>Elective course15 PTS</div> <div>Law elective15 PTS</div>

Core courses **PTS:** Points

Direct entry to Part II

The AUT Law School considers applications for direct entry to Part II of the LLB degree. Applicants will normally have:

- Successfully completed Part I of the law degree at another New Zealand law school; and
- Obtained a minimum of a B grade average in their first-year law courses

If you're offered direct entry to Part II from another New Zealand law school, you normally receive cross-credits for the following AUT courses:

- Legal System – 15 points
- Legal Reasoning and Writing – 30 points
- Plus 60 points of non-law courses in the first year of the AUT law degree.

You may still need to complete the Personal Property course which is a 15-point Part I requirement. In the AUT law degree, this course constitutes part of the property law requirement for the New Zealand Council of Legal Education. If you're a direct entry student, you need to complete this course, in addition to the other requirements of the LLB, if you have not satisfied that requirement through a similar course at your previous tertiary education institution.

For more information visit aut.ac.nz/law



You can study at the AUT South Campus in Manukau



The AUT City Campus in the heart of Auckland City



Scan this QR code for details about courses, where your study could lead, and stories about our great graduates and students.

Bachelor of Laws (Honours)

Further your legal research and writing skills, and make your CV stand out when you apply for highly competitive law jobs or clerkships. The Bachelor of Laws (Honours) is aimed at high-achieving students in the Bachelor of Laws who want to advance their legal research skills.

Entry requirements

Minimum entry requirements

- Completed Bachelor of Laws Parts I and II to the academic standard for honours.

Students will be invited to join the Bachelor of Laws (Honours) programme if they have at least a B+ grade average in their Part II Bachelor of Laws courses.

English language requirements

IELTS (Academic) 6.5 overall with all bands 6.0 or higher; or equivalent.

What this qualification covers

The Bachelor of Laws (Honours) involves completing a research course and a dissertation and may involve adding an extra semester to your Bachelor of Laws.

Parts I and II

Completion of the LLB to the required academic standard³.

Part III and IV and additional semester

Completion of the LLB, as well as a research methods course and a dissertation on a topic of your choice under the supervision of our AUT Law School staff.

- The 540 points include 480 points from the LLB.
- Most Bachelor of Laws (Honours) students complete the Research Course in Part III, and complete the Dissertation course in Part IV. Some students complete the dissertation course in February of the year following Part IV.
- Students will be invited to join the Bachelor of Laws (Honours) programme if they have at least a B+ grade average in their Part II Bachelor of Laws courses.

LLB(Hons) | AK1009

QUICK FACTS

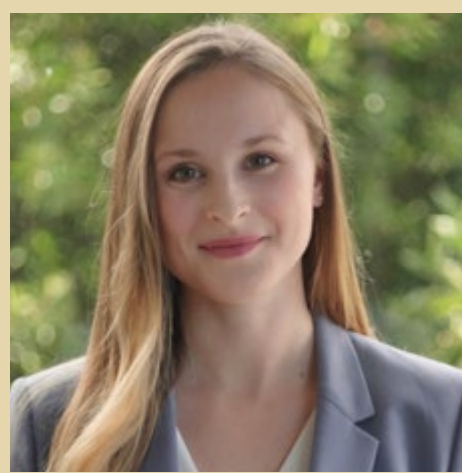
Level	8
Points	540 ¹
Duration	4½ years full-time ²
Campus	City
Starts	3 March 2025

Career opportunities

As a lawyer you might practise in a wide range of legal areas including corporate law, commercial and intellectual property, family law, environmental law, criminal law, taxation and general practice.

Law graduates also move into roles that include:

- In-house lawyers in large New Zealand and multinational businesses and organisations
- Patent attorneys
- Policy advisors to central and local government
- Senior management roles in business
- Taxation practitioners in accountancy practices



"I really enjoyed meeting likeminded people, and I loved learning critical thinking skills and developing my areas of passion. I'm interested in many areas of the law, and I'm excited to have now started my career and feel very well equipped to do so. I would recommend studying at AUT to others because I very much enjoyed my time there. It has been fun, interesting, challenging and rewarding. After graduating from AUT and receiving the AUT Law School's award for the best honours dissertation, I've secured a position as a law clerk in the litigation team at the Auckland office of Russell McVeagh."

Nina Pinkerton-Bennett
Law Clerk, Russell McVeagh
Bachelor of Laws (Honours) with First-Class Honours and
Bachelor of Arts in Conflict Resolution

Certificate in Legal Studies

Scan this QR code for course details and where this qualification could lead you.



Interested in law and the legal system? Gain an understanding of New Zealand's legal framework in less than a year. The Certificate in Legal Studies offers an introduction to law in New Zealand and includes courses from the Bachelor of Laws. This certificate is ideal for students who aren't quite ready to commit to a full law degree or who have an overseas law degree and need to complete New Zealand Council of Legal Education (NZCLE) requirements to practise law in New Zealand. The Certificate in Legal Studies prepares you for further study in the Bachelor of Laws.

Entry requirements

Minimum entry requirements

University Entrance or equivalent

English language requirements

IELTS (Academic) 6.0 overall with all bands 5.5 or higher; or equivalent.

Useful New Zealand school subjects

Subjects that develop a very good standard of reading, oral and written English.

What this qualification covers

To graduate with a Certificate in Legal Studies you must successfully complete 60 points from the Bachelor of Laws.

If you haven't studied law before you'll complete courses on the legal system, personal property, and legal reasoning and writing.

If you've previously studied law and need to complete courses as required by the Council of Legal Education, you may complete level 6 and level 7 courses from the Bachelor of Laws.

CertLegalSt | AK2601

QUICK FACTS

Level	5
Points	60
Duration	½ year full-time, 1 year part-time
Campus	City & South
Starts	3 March 2025

Postgraduate Certificate in Law

Scan this QR code for course details and graduate stories.



The Postgraduate Certificate in Law is for those who have already completed an undergraduate degree, whether in law or another area, and want to gain advanced legal knowledge and develop their research skills. It provides you with advanced theoretical and practical knowledge of law and legal issues, which you can integrate with your existing knowledge and related professional experience.

Practising lawyers can earn credit towards satisfying compulsory Continuing Legal Education requirements by enrolling in and completing courses towards a Postgraduate Certificate in Law.

In exceptional circumstances, a student who does not otherwise meet the criteria for entry to the Master of Laws but who has completed the Postgraduate Certificate in Law may be considered for admission into the Master of Laws.

Entry requirements

Minimum entry requirements

- A Bachelor of Laws or Bachelor of Laws (Honours); or
- A bachelor's degree; or
- A relevant professional qualification or professional experience approved by the Dean of Law to be equivalent to a bachelor's degree
- Applicants must demonstrate to the Dean (or representative) an ability to undertake advanced study and research in law.

English language requirements

IELTS (Academic) 7.0 overall with 7.0 or higher in Writing and Reading, and 6.5 in Listening and Speaking; or equivalent.

What this qualification covers

To qualify for the Postgraduate Certificate in Law, you must successfully complete 60 points from courses in the Master of Laws.

PgCertLaw | AK1050

QUICK FACTS

Level	8
Points	60
Duration	½ year full-time, part-time available
Campus	City
Starts	3 March & 21 July 2025

Master of Laws

Scan this QR code for course details and graduate stories.



A Master of Laws will deepen your legal knowledge and legal research skills. We offer a range of study options to suit your needs – you can complete the Master of Laws entirely by thesis, entirely by coursework, or through a combination of coursework and research. Choose from a range of specialisations or focus areas.

Entry requirements

Minimum entry requirements

- A Bachelor of Laws, Bachelor of Laws (Honours) or equivalent.
- In exceptional circumstances, an applicant who does not meet the requirements above but who has extensive professional or scholarly experience of an appropriate kind, may be considered for admission.
- Applicants must demonstrate to the Dean (or representative) an ability to undertake study at postgraduate level in the proposed course of study.

English language requirements

IELTS (Academic) 7.0 overall with 7.0 or higher in Writing and Reading, and 6.5 in Listening and Speaking; or equivalent.

Other requirements

Will normally be required to complete an approved research methods course.

LLM | AK1044

QUICK FACTS

Level	9
Points	120
Duration	1 year full-time, part-time available
Campus	City
Starts	3 March & 21 July 2025

Career opportunities

The in-depth study required in the Master of Laws can enhance your employment opportunities, either professionally or academically, and give you the edge you need to take your career to the next level.

What this qualification covers

Master of Laws by Thesis

- 120-point thesis (around 40,000 words) OR
- 90-point thesis (around 30,000 words) and 30 points from courses
- The thesis question has to be approved before enrolment.

Master of Laws by Dissertation

- A dissertation of 60 points (around 20,000 words) AND
- 60 points from additional courses
- We suggest you start by completing the courses. The topic for your dissertation has to be approved.

Master of Laws by Coursework

- 120 points from courses

Specialisations and focus areas

Specialisations

You can complete the Master of Laws with 90 points¹ in one of these specialisations:

- Corporate and Commercial Law
- Criminal Law
- Employment Law
- Environmental and Resource Management Law
- Intellectual Property
- Property and Development
- Regulation and Competition

Focus areas

You could also choose one of these focus areas and include courses from one of the following:

- Climate Change Law
- Human Rights Law
- Indigenous Rights and Law
- International Law
- Jurisprudence
- Non-Adversarial Justice
- Private Law
- Public Law
- Trusts and Fiduciary Obligations

1. This may include points from a thesis, dissertation or research project.



“What I loved most about studying at AUT was being able to participate in discussions with some of New Zealand’s greatest legal academics in the criminal law sphere. I also appreciated that my study schedule was flexible and I could fit my degree around my full-time work. I chose the Master of Laws because I wanted to expand my research skills and look deeper into the severe overrepresentation of Māori in the criminal justice system to inform my legal practice. I chose AUT as it had the widest range of criminal law courses for the Master of Laws, the academic staff included some of the leading criminal law academics, and because AUT is known for looking out for student welfare.”

Alex Greaves
Ngāi Tahu
Employed Barrister, Walker Street Chambers, Christchurch
Master of Laws



“During my bachelor’s degree, we learned about the issues Māori and Pacific people face throughout the criminal justice system, and how discrimination continues to be perpetuated in society. As a result, I wanted to learn more about navigating the legal system and understand the underlying issues that contribute to an overrepresentation of Māori and Pacific people in the legal system. I now enjoy my role as an associate in the risk services team at PwC. Each day brings different tasks and projects, and the job is both rewarding and dynamic.”

Wairua Taru Grant Pukeiti
Cook Island Māori, Te Rarawa, Te Aupouri, Ngāti Hine
Associate, Risk Services Team, PricewaterhouseCoopers (PwC)
Master of Laws with Distinction
Bachelor of Arts (Honours)
Bachelor of Arts in Criminology and Māori Development

Master of Philosophy

Scan this QR code for details on the application process and to browse academic supervisors.



The Master of Philosophy (MPhil) is a one-year, research-only master's degree. It provides an opportunity for you to undertake a research topic of your interest under the supervision of AUT Law School academics. It can also serve as a pathway to more advanced research at doctoral level.

Entry requirements

Minimum entry requirements

Must have completed one of the following with the equivalent of a B grade average or higher:

- Four-year bachelor's degree OR
- Bachelor's honours degree OR
- Bachelor's degree and postgraduate diploma OR
- Bachelor's degree and at least three years of experience relevant to the proposed research
- An interview may be required for particular research areas.

English language requirements

IELTS (Academic) of 6.5 overall with all bands 6.0 or higher; or equivalent.

Other requirements

May be required to complete an approved research methods course.

What this qualification covers

You complete an original thesis during this year of your study. AUT Law School academics are available to supervise Master of Philosophy research on a wide range of topics.

MPhil | AK3720

QUICK FACTS

Level	9
Points	120
Duration	1 year full-time, 2 years part time
Campus	City
Starts	1 Feb, 1 May, 1 Aug & 1 Nov 2025

Career opportunities

As a graduate with a Master of Philosophy you have the necessary skills and qualifications to follow an academic or research career leading to a PhD. Alternatively, your research topic may lead you to a position of expertise in your chosen field.

Doctor of Philosophy

Scan this QR code for details on the application process and to browse academic supervisors.



The Doctor of Philosophy (PhD) is the University's highest qualification. The degree is undertaken by research only and leads to advanced academic and theoretical knowledge in a specialist area. The PhD is suitable for students who want to pursue an academic or research career, or a senior position in the public or private sector. You will make a significant original contribution to knowledge and understanding in your field of study and meet recognised international standards for your work. Our academic supervisors are recognised world-class researchers in their fields who have the expert knowledge to guide and advise you throughout your PhD.

Entry requirements

Minimum entry requirements

Must normally have completed the following in a discipline appropriate to the proposed research:

- Master's degree with first-class or second-class (first division) honours OR
- Bachelor's degree with honours (equivalent to four years of study), normally with first-class or second-class (first division) honours

The degree should include advanced learning in research, execution of a research project and a written report on the research.

English language requirements

IELTS (Academic) of 6.5 overall with 7.0 in Writing and no band less than 6.0

Other requirements

Acceptance is subject to the availability of staff for supervision, prior research preparation and appropriate facilities.

Planning your PhD

You are required to prepare a brief proposal for your intended research, specifying the field of research and a general research question you wish to investigate. You should provide official copies of academic transcripts, and evidence of previous independent research outputs, like an honours-level dissertation or master's-level dissertation or thesis. You should also provide evidence of successful completion of studies in research methodology at a postgraduate level.

PhD research allowance

PhD research allowances are normally available to support PhD candidates with expenses associated with data collection and analysis, conference funding, and other resources.

PhD | AK3518

QUICK FACTS

Level	10
Points	360
Duration	3-6 years
Campus	City
Starts	1 Feb, 1 May, 1 Aug & 1 Nov 2025

Career opportunities

The PhD is suitable for students who want to pursue an academic or research career, or a senior position in the public or private sector. The opportunities to apply the knowledge and skills you gain will be extensive, both in industry and academia.

Whakauru where wānanga

UNIVERSITY ENTRANCE

University admission to AUT bachelor's degrees

For New Zealand citizens and residents, and international students studying in a high school in New Zealand

To gain admission to bachelor's degrees, you must have met the requirements for University Entrance plus any specified admission requirements for a programme, such as specific subjects and interviews.

For more information on entry requirements, including entry requirements for international students visit aut.ac.nz/entryrequirements

Admission categories

You may be granted University Entrance under one of the following categories:

- NCEA University Entrance
- Ad Eundem Statum admission (at an equivalent level) – this includes Cambridge International Examinations (CIE) and International Baccalaureate Diploma Programme (IB)
- Discretionary Entrance
- Special Admission

Visit aut.ac.nz/entryrequirements to find out more details about these admission categories.

Common University Entrance requirements

Where programmes require a specific subject, it is expected that a student will have achieved a minimum of 14 NCEA credits in that subject (or equivalent), unless indicated otherwise. For a list of NCEA approved subjects for University Entrance visit the NZQA website, nzqa.govt.nz

	NCEA	CIE	IB ³
Overall	Require NCEA level 3 certificate which consists of 80 credits, including at least 60 credits at level 3 or higher. Can include up to 20 credits at level 2. Note: Credits to achieve NCEA level 3 may include unit standards from non-approved subjects. Subject credits Total of 42 level 3 credits including: <ul style="list-style-type: none">• 14 credits from one approved subject• 14 credits from a second approved subject• 14 credits from a third approved subject	A minimum of 120 points on the New Zealand CAIE Tariff ¹ at A or AS level from an approved list (equivalent to NCEA approved subject list). Must include at least three subjects (excluding Thinking Skills) with grades D or above.	IB Diploma with minimum 24 points
Numeracy	At least 10 level 1 (or higher) numeracy credits (can be achieved through a range of subjects)	A minimum grade of D in IGCSE ² mathematics or any mathematics subject at AS or A level.	Any mathematics subject – IB Group 5
Literacy	Total of 10 level 2 (or higher) literacy credits including: <ul style="list-style-type: none">• 5 reading credits• 5 writing credits From specific standards in a range of NZQA English language rich subjects	A minimum grade of E in English Language and/or English Literature subject at AS or A level.	Literature or language and literature (SL or HL) – IB Group 1, with English as the language

1. NZ Tariff (based on old UCAS Tariff) = system which converts AS and A level grades into points.
2. IGCSE = International General Certificate of Secondary Education.
3. New Zealand residents who have taken IB but have not been awarded the Diploma may apply for discretionary entrance.

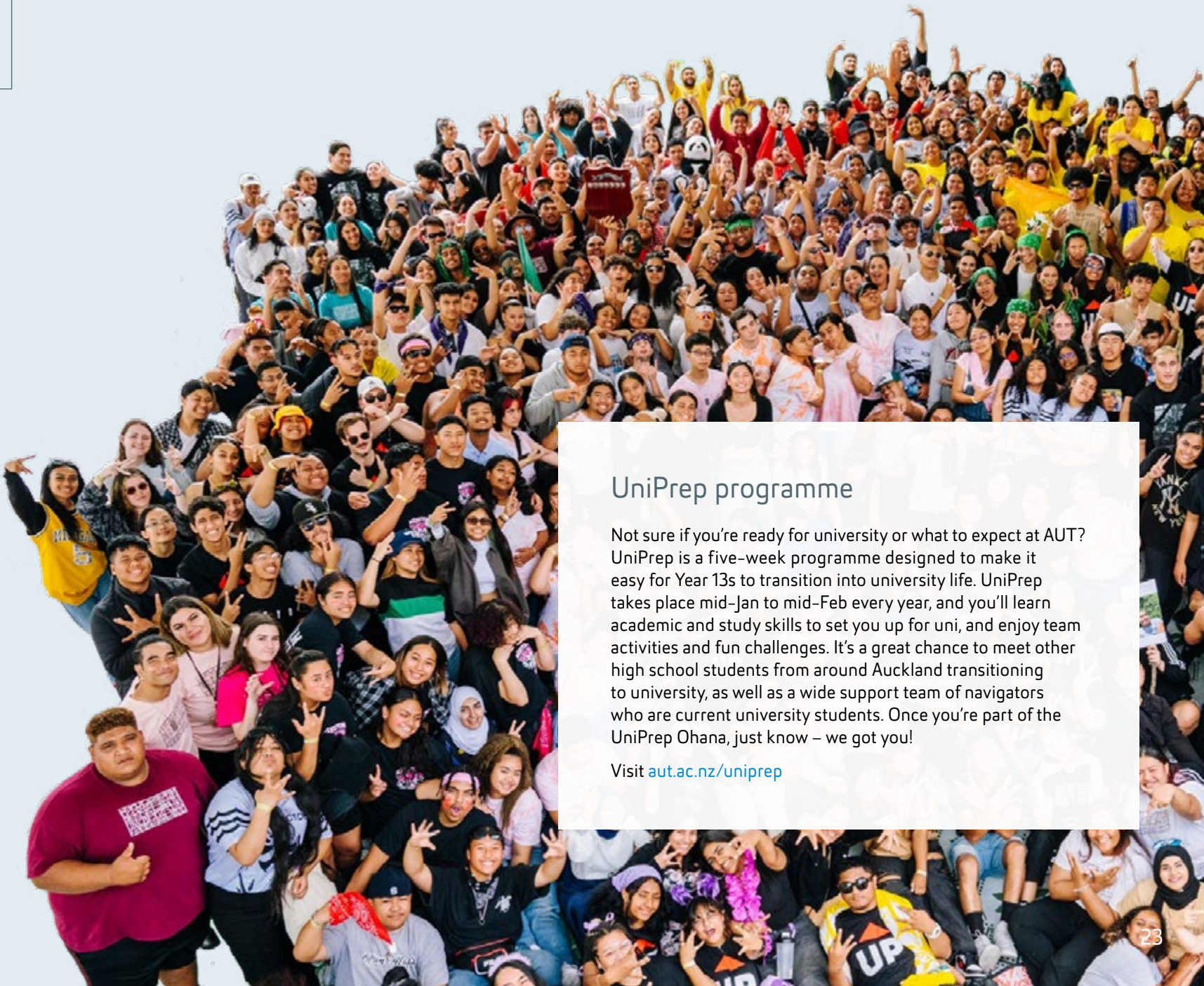
English language requirements

If you don't have English as your first language, you may have to show evidence of your English language skills. Visit aut.ac.nz/englishrequirements for details about English language testing and recognised English tests.

International students

Contact us for information regarding studying at AUT if you're not a citizen or permanent resident of New Zealand or Australia, or a citizen of the Cook Islands, Niue or Tokelau islands.

Visit aut.ac.nz/int/entryrequirements for entry requirements for specific countries. If you have any questions, you can contact us at aut.ac.nz/enquire



UniPrep programme

Not sure if you're ready for university or what to expect at AUT? UniPrep is a five-week programme designed to make it easy for Year 13s to transition into university life. UniPrep takes place mid-Jan to mid-Feb every year, and you'll learn academic and study skills to set you up for uni, and enjoy team activities and fun challenges. It's a great chance to meet other high school students from around Auckland transitioning to university, as well as a wide support team of navigators who are current university students. Once you're part of the UniPrep Ohana, just know – we got you!

Visit aut.ac.nz/uniprep

Ngā utu whakauru, ngā karahipi

FEES & SCHOLARSHIPS

Cost is an important factor when thinking about university study. This page gives you an idea of the approximate tuition fees at AUT, and different options to help you fund your education including scholarships, student loans and allowances.

To give you an idea of approximate costs, the 2024 tuition fees are shown below (based on full-time study and completing 120 points per year). All fees are in NZ dollars and include GST. The 2025 tuition fees will be advertised on aut.ac.nz/fees as soon as they have been set. You may also need to pay additional fees for course materials or elective courses (check with your faculty if there are additional fees for your programme).

Domestic student tuition fees

First-time domestic students are entitled to one year of fees free.

Undergraduate programmes

Fee (per year):	\$4,218 (for 60 points) – \$8,435 (for 120 points) ¹ (\$3,645 – \$7,289 tuition fees + \$573 – \$1,146 student services levy)
-----------------	---

Postgraduate programmes

Doctor of Philosophy	
Fee (per year):	\$8,623 (for 120 points) (\$7,477 tuition fees + \$1,146 student services levy)
Master of Philosophy	
Fee (per year):	\$8,623 (for 120 points) ¹ (\$7,477 tuition fees + \$1,146 student services levy)

Other postgraduate programmes

Fee (per year):	\$5,303 (for 60 points) – \$10,607 (for 120 points) ¹ (\$4,730 – \$9,461 tuition fees + \$573 – \$1,146 student services levy)
-----------------	--

1. Part-time students pay a proportion of the fee based on the number of academic points they are studying.

International student tuition fees

Undergraduate programmes

Fee (per year):	\$17,573 (for 60 points) – \$37,046 (for 120 points) (\$17,000 – \$35,900 tuition fees + \$573 – \$1,146 student services levy)
-----------------	--

Postgraduate programmes

Doctor of Philosophy	
Fee (per year):	\$8,624 (for 120 points) ¹ (\$7,478 tuition fees + \$1,146 student services levy)
Master of Philosophy	
Fee (per year):	\$43,046 (for 120 points) (\$41,900 tuition fees + \$1,146 student services levy)

Other postgraduate programmes

Fee (per year):	\$19,373 (for 60 points) – \$38,646 (for 120 points) ¹ (\$18,800 – \$37,500 tuition fees + \$573 – \$1,146 student services levy)
-----------------	---

1. The fee shown is for candidates conducting the majority of their study within NZ. Where the majority of studies is conducted outside NZ an international tuition fee of \$43,403 will apply.

Please note that you must pay your fees in full by the date specified on your fees invoice.

To find out more about fees call **+64 9 921 9779** or **0800 AUT AUT** (0800 288 288).

Free fees for your university study¹

Eligible domestic students starting tertiary education may receive one year of full-time study fees-free. To check if you're eligible for fees-free study visit aut.ac.nz/fees

Student loans and allowances¹

If you're a full-time domestic student, you may qualify for a student loan or allowance. Student loans and allowances are administered and paid by StudyLink. The application process can take some time, so it's a good idea to apply early. You can apply for a student loan or student allowance before your enrolment at AUT is complete.

To find out more call **0800 88 99 00** or visit studylink.govt.nz

1. Domestic students only, not available to international students.

Financial assistance

We know that sometimes things happen and financial stress can impact your academic success. That's why we offer financial support that ranges from offering grocery or fuel vouchers, to helping with that unexpected bill.

StudyLink

Visit studylink.govt.nz for tools, tips and information to help you plan and understand the costs you will have while studying.

Scholarships and awards

Scholarships and awards are a great way to fund your university study. There is a wide range of scholarships and awards available to AUT students at all stages of their study including the Welcome to Auckland scholarship and Find Your Greatness scholarship (details below).

Visit the scholarships website for a full current list of scholarships offered by AUT and external funders, as well as application forms and closing dates. You can also contact AUT's Scholarships Office for advice on scholarships, awards and the scholarship application process.

2025 AUT Welcome to Auckland Scholarships

Because we recognise the challenges students may face when moving to Auckland, AUT's three-year Welcome to Auckland scholarships make a contribution towards students' accommodation and study fees. These scholarships recognise high-achieving secondary school students living outside of Auckland who intend to enrol in bachelor's degree study commencing in 2025.

2025 AUT Find Your Greatness Scholarships – School Leaver

AUT's Find Your Greatness undergraduate scholarships for school leavers reflect our commitment to creating great graduates. These three-year scholarships recognise students' academic achievement, as well as students' potential leadership ability and contribution to their school or community, cultural pursuits or sport at a representative level.

The Find Your Greatness scholarships are offered in the four categories below for study commencing in 2025:

- Academic Excellence
- All Rounder
- Hiki Ake (Lift Up)
- Kiwa (Māori and Pacific students)

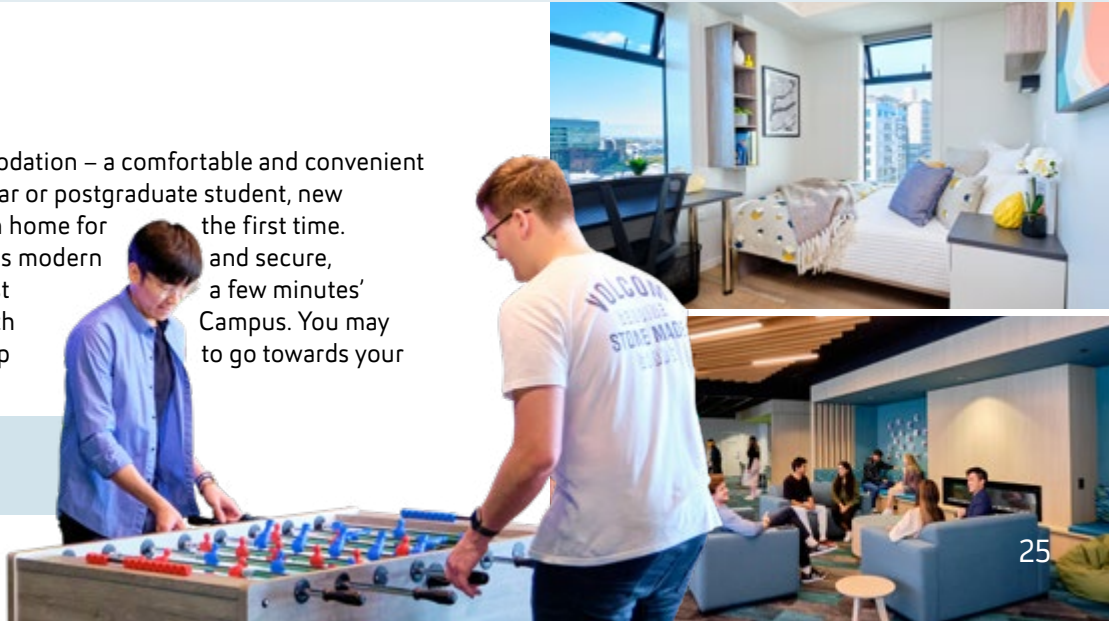
Applicants will be considered in all categories for which they are eligible.

To find out more call **+64 9 921 9837** or visit aut.ac.nz/scholarships

Accommodation

Check out our student accommodation – a comfortable and convenient option whether you're a first-year or postgraduate student, new to Auckland, or living away from home for the first time. AUT's student accommodation is modern and secure, offering a social community just a few minutes' walk away from our City or North Campus. You may even be eligible for a scholarship accommodation costs.

Visit aut.ac.nz/accommodation



He pēhea te tono

HOW TO APPLY

Below is the step-by-step guide to the application process.
For more information visit aut.ac.nz/apply

1 APPLY EARLY

Places are limited. Submit your application well before the semester starts.

APPLYING FOR 2025

- Semester 1
– apply by 2 December 2024
- Semester 2
– apply by 5 May 2025

Applying for the Master of Philosophy (MPhil) and Doctor of Philosophy (PhD)

If you're planning to enrol in a Master of Philosophy (MPhil) or Doctor of Philosophy (PhD) at AUT, email the Graduate Research School doctoral.and.mphil.admissions@aut.ac.nz

2 COMPLETE THE APPLICATION FORM

- Apply online
- Indicate your programme(s) of choice and major (if known)

International students can also apply using an AUT approved international agent. For a list of AUT registered agents visit aut.ac.nz/international-agents

SUBMIT YOUR APPLICATION

WE ACKNOWLEDGE YOUR APPLICATION

- We will send you an acknowledgment email, which explains how to check the status of your application
- We will contact you if we need more information

WE ASSESS YOUR APPLICATION

- We assess your application to ensure you have met the entry criteria for the programme(s) you are applying for
- We consider your academic history and relevant experience to ensure you can succeed in your programme
- We let you know if your application has been successful

POSSIBLE OUTCOMES

CONFIRMED We would like to offer you a place to study at AUT

PROVISIONAL You have met some of the criteria for entry to your chosen programme of study and we would like to offer you a provisional place to study at AUT. If you don't meet the rest of the requirements, then this offer will be withdrawn

CONDITIONAL You have to meet the conditions and approvals listed in your conditional offer to be able to secure a formal offer of place

DECLINED If you don't meet the entry requirements or all places are taken, we may offer you an alternative programme

3 ACCEPT YOUR OFFER

It's important that you respond as soon as possible, particularly if you've been offered a place in a programme with limited places.

Once you've accepted your offer of place, we'll let you know how to enrol in the courses for your programme, and you can start to get excited about joining AUT.

Ready to apply?
apply.aut.ac.nz

Ētahi atu kōrero
FIND OUT MORE



aut.ac.nz

Need some help?

Visit aut.ac.nz/enquire, ask us your question and we'll call you back. Or you can phone **0800 AUT AUT** (0800 288 288) to speak to one of our friendly advisors. We can help with any questions you may have, and you could also book a course counselling session or a campus tour.

Campuses

City Campus

55 Wellesley Street East, Auckland Central

North Campus

90 Akoranga Drive, Northcote, Auckland

South Campus

640 Great South Road, Manukau, Auckland

Connect with us now:



AUT LIVE

Join us at our open day, AUT LIVE, on the City Campus and see everything AUT has to offer to help you make an educated decision about university study.

aut.ac.nz/live





0800 AUT AUT (0800 288 288)

Auckland University of Technology
Auckland, New Zealand
aut.ac.nz

Enquire now
aut.ac.nz/enquire

Connect with us now:



This booklet is printed on Satin matt paper which is certified to the Forest Stewardship Council® (FSC®) standard as an FSC Mix paper from well managed forests and other responsible sources. We print using BIO-inks that contain materials that are based on renewable resources including wood resin (rosin, colophony), and vegetable oils, linseed oil and soybean oil and the printing company is FSC certified.