



AUT

Postgraduate Research Programmes

Business & Economics



Our students

Meghana Lama

People Solutions Consultant,
Auckland Transport
Master of Business

AUT is a marvellous melting pot, says business alumna Meghana Lama who came to AUT as an international student from India to study a Master of Business.

"Despite being new to New Zealand when I joined AUT, I felt at home from day one, and that speaks volumes of the spirit of inclusion that AUT stands for."

For her master's research, she focused on the early work experiences of skilled Indian migrants in New Zealand.



Angela Andersen

Waikato-Tanui

Senior Consultant, Deloitte
Doctor of Philosophy
Bachelor of Business
(Honours) in Finance
Bachelor of Business in
Finance and Accounting

Creating her own destiny was what she enjoyed most about studying at AUT, says business alumna Angela Andersen.

"Our surroundings play an influential role in our lives. AUT is a community where you can be yourself, be ambitious, and discover your unique abilities. AUT also prepares students well for the real world by developing the professional and technical skills that they need for a career in business."

For her PhD research, Angela focused on board of directors' social capital and its contribution to New Zealand stock exchange firms.



Jordan Sanford

Graduate Financial Risk
Analyst, New Zealand Treasury
Bachelor of Business
(Honours) in Economics
Bachelor of Business in
Economics and Finance

Getting involved in teams and projects outside of your usual studies can have a massive impact on landing a job straight out of university, says business alumnus Jordan Sanford who now works as a graduate financial risk analyst at the New Zealand Treasury.

"One of the achievements I'm particularly proud of throughout my studies at AUT was being part of a team of AUT business students representing the university, and later New Zealand, in the 2017 CFA Institute University Challenge. Our team made it to the Asia Pacific semi-finals in Malaysia where we presented our research on a company listed on the NZX against some of the best finance schools in the region.

"Opportunities like this don't just help make your CV stand out, but also enable you to gain tangible experience and develop the soft skills employers are looking for."



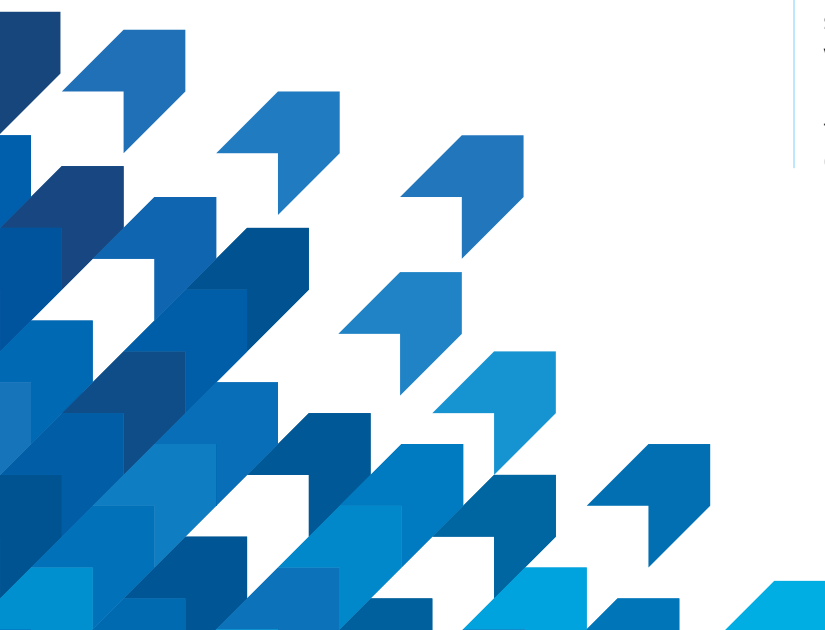
Tien Nguyen

Doctor of Philosophy
candidate

The opportunity to work and interact with brilliant academic staff was one of the reasons that attracted her to AUT, says Tien Nguyen who came to AUT as an international student from Vietnam to study a PhD in accounting.

"AUT is a great place to study. The academic staff are really committed to mentoring and collaborating with students, and I appreciate the research infrastructure to support doctoral students. I'm grateful for my time as a doctoral student here and would definitely recommend applying to AUT."

For her PhD thesis, Tien is focusing on goodwill accounting treatment, a topic of much controversy in the accounting discipline.





QS Stars

For Employability, Facilities, Inclusiveness,
Internationalisation & Teaching



Strong links with business
and community



Ranked in the top 300 universities
worldwide for all our business and
economics subjects

World-class teaching and research

AUT is internationally recognised for its excellence in research and teaching and is placed among the top universities in the world in QS and Times Higher Education rankings. Times Higher Education has further ranked AUT as one of the world's top 60 young universities, based on quality of teaching and research, and international outlook.

An investment in your future

Graduates of our postgraduate research programmes are carving out successful careers in both business and academic worlds. Through your studies you will build specialist knowledge in a specific field of business. You will also develop high levels of research, critical thinking and other transferable skills that help you stand out in the highly competitive employment market.

A chance to explore an area of your interest

As part of your postgraduate research degree, you complete an independent research thesis or dissertation in an area of your interest, supervised by a member of academic staff who is an expert in the field. By undertaking your own research, you can make an impact and contribute original knowledge relevant to your field of study and employment.

A research community making a difference

AUT Business School is home to world-class researchers engaged in research of both local and global relevance. We prioritise research that matters and academic staff are increasingly undertaking research that delivers positive social impact.

Specialisations

You can study one of eight available specialisations:

- Accounting
- Economics
- Finance
- Information Systems
- International Business
- Management
- Marketing
- Sport Leadership and Management

Scholarships

As a postgraduate research student you can apply for a number of scholarships. BBus(Hons), PgDipBus students, and MBus dissertation students can apply for faculty postgraduate scholarships. MBus thesis students can apply for faculty research master's scholarships. PhD students can apply for university and faculty doctoral scholarships.

For more information please visit aut.ac.nz/scholarships

Our programmes

BACHELOR OF BUSINESS (HONOURS) (BBus(Hons))	
Code	AK3712
Level	8
Points	120
Duration	1 year full-time or part-time equivalent
Venue	City Campus
Start date	24 February 2020/13 July 2020
Domestic Tuition Fees ¹	\$8,711 per 120 points – subject to change in 2021
International Tuition Fees ¹	\$33,330 per 120 points – subject to change in 2021

1. Tuition fees are reflective of 2020 fees. Fees for study completed beyond 2020 are subject to annual adjustments. Tuition fees only. Other fees will apply.

Minimum entry requirements

Bachelor of Business or equivalent with a B+ grade average or higher in level 7 papers in the selected subject area.

MASTER OF BUSINESS (MBus)	
Code	AK1060
Level	9
Points	180
Duration	1½ years full-time or part-time equivalent
Venue	City Campus
Start date	24 February 2020/13 July 2020
Domestic Tuition Fees ¹	\$8,711 per 120 points – subject to change in 2021
International Tuition Fees ¹	\$33,330 per 120 points – subject to change in 2021

1. Tuition fees are reflective of 2020 fees. Fees for study completed beyond 2020 are subject to annual adjustments. Tuition fees only. Other fees will apply.

Minimum entry requirements

Must have completed one of the following or equivalent with a B grade average or higher in all relevant prerequisite papers in the selected subject area:

- Bachelor of Business (or business-related bachelor's degree) OR
- Graduate Diploma in Business

English language requirements

IELTS (Academic) 6.5 overall with a minimum score of 6.0 in each band.

English language requirements

IELTS (Academic) 6.5 overall with a minimum score of 6.0 in each band.

The Bachelor of Business (Honours) is an accelerated degree designed for high achievers and can be a strong differentiator for employers seeking top talent. It combines research and coursework at an advanced level and can lead to doctoral studies.

There are three components:

- Specialisation papers
- Research methods paper(s)
- Research (Honours) dissertation

These components are designed to equip you with a high level of research and analytical skills, presentation and communication skills, and the ability to investigate and solve complex issues.

The Master of Business degree will equip you with advanced knowledge in a specialist business area and high-level critical thinking and research skills. Graduates of this degree will stand out in today's complex and changing work environments and are also well placed for further study in the PhD programme.

There are three components:

- **Specialisation papers** – advanced level papers provide you with comprehensive knowledge of the latest research and theories in your specialisation. Students may also choose from a selection of generic papers from outside their specialisation.
- **Research methods papers** – training in qualitative/quantitative research methods and analysis. Specialist research methods are offered by Economics, Finance, and Marketing specialisations.
- **Research (thesis or dissertation)** – you complete an independent research thesis or dissertation in an area of your interest, supervised by a member of academic staff who is an expert in the field.

Postgraduate diploma and certificate options

The Postgraduate Certificate in Business (60 points, one semester) and Postgraduate Diploma in Business (120 points, one year) are designed for people seeking to build on their undergraduate business degree and advance their careers. Pathways are available to the MBus or MPhil.

You complete Master of Business papers and will gain advanced knowledge in your specialisation, and useful research skills that are highly valued within industry and will enhance your career prospects.

MASTER OF PHILOSOPHY (MPhil)	
Code	AK3720
Level	9
Points	120
Duration	1 year full-time or 2 years part-time
Venue	City Campus
Start date	May start any time during the academic year
Domestic Tuition Fees ¹	\$6,855 per 120 points – subject to change in 2021
International Tuition Fees ¹	\$37,461 per 120 points – subject to change in 2021

1. Tuition fees are reflective of 2020 fees. Fees for study completed beyond 2020 are subject to annual adjustments. Tuition fees only. Other fees will apply.

Minimum entry requirements

Must have completed one of the following or equivalent:

- A four-year bachelor's degree OR
- A bachelor's honours degree OR
- A bachelor's degree and a postgraduate diploma OR
- A bachelor's degree and at least three years of experience relevant to the proposed research

DOCTOR OF PHILOSOPHY (PhD)	
Code	AK3518
Level	10
Points	360
Duration	3–6 years
Venue	City Campus
Start date	May start any time during the academic year
Domestic Tuition Fees ¹	\$6,855 per 120 points – subject to change in 2021
International Tuition Fees ^{1,2}	\$38,059 per 120 points – subject to change in 2021

1. Fees for study completed beyond 2020 are subject to annual adjustments. Tuition fees only. Other fees will apply.

2. International PhD students may qualify for domestic fees.

Minimum entry requirements

Must normally have completed the following in a specialisation appropriate to the proposed research:

- Master's degree by research with first-class or upper second-class honours OR
- Bachelor's degree with honours (equivalent to four years of study) ³

In exceptional circumstances, an applicant may be admitted who does not meet the requirements above, but who has a professional qualification and/or extensive professional or scholarly experience relevant to the proposed subject of the thesis.

English language requirements

IELTS (Academic) 6.5 overall with a minimum score of 6.0 in each band.

Other requirements

May be required to complete approved research methods papers before undertaking a thesis. Acceptance is dependent on the availability of appropriate staff to supervise research in the field of study.

In the Master of Philosophy you can develop an independent research project focused on your specific area of interest, under the supervision of expert staff. You will be well placed to move on to PhD research.

To enquire about your eligibility for the MPhil, email doctoral.and.mphil.admissions@aut.ac.nz providing copies of your academic transcripts and a brief proposal for your intended research.

The programme must have included advanced learning in research in a relevant business area, and a research thesis/dissertation.

Note: Pathways to the PhD from the MBA and Professional Masters are available.

English language requirements

IELTS (Academic) 6.5 overall with a minimum score of 6.0 in each band and a minimum of 7.0 in Writing.

Other requirements

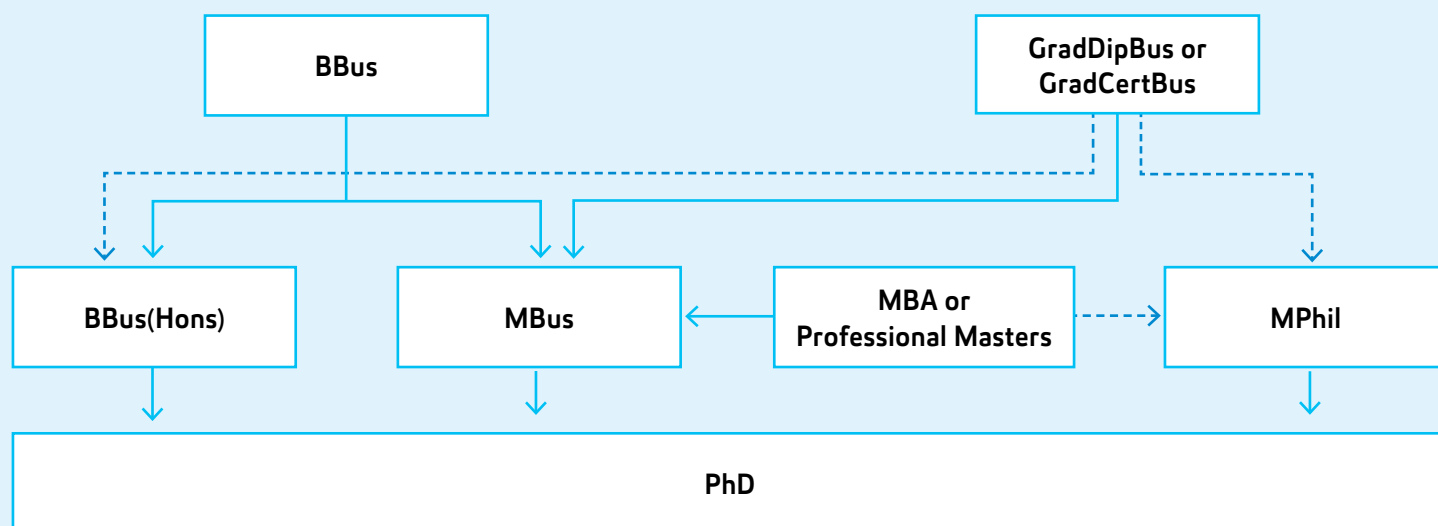
Acceptance is dependent on the availability of appropriate staff to supervise research in the field of study.

The Doctor of Philosophy (PhD) is the University's highest qualification. You undertake an extensive independent research project, under the guidance of a supervisory team. Your research will result in a significant original contribution to your field of study. The PhD is suitable for students who want to pursue an academic or research career, or a senior position in the public or private sector.

To enquire about your eligibility for PhD studies, email doctoral.and.mphil.admissions@aut.ac.nz providing copies of your academic transcripts and a brief proposal for your intended research.

3. The Faculty of Business, Economics and Law requires first-class honours in the BBus(Hons) for those applying directly to the PhD.

Progression options



↓ Standard pathway*

⋯ Alternative pathway that requires approval from the Associate Dean Postgraduate*

General tips

- Taking the Applied Project option instead of Co-operative Education while completing the BBus will hone your research skills and prepare you for the BBus(Hons) and MBus.
- If you meet StudyLink's eligibility criteria, StudyLink will provide student allowances and loans for BBus(Hons) students, and student living costs and loans for all other postgraduate programmes.

BBus(Hons) tips:

- BBus students can complete Co-operative Education after completing the BBus(Hons) and graduate with both degrees together (BBus and BBus(Hons)).
- Completion of BBus(Hons) with first-class honours can also provide direct entry to the PhD.
- Students can progress from the GradDipBus/GradCertBus to the BBus(Hons) (subject to approval).

MBus tips:

- Students can progress from the BBus, GradCertBus/GradDipBus, BBus(Hons), MBA and Professional Masters to the MBus if they meet the MBus entry criteria.
- Completion of the MBus with upper second-class honours or higher may provide direct entry to the PhD.

*The above information is provided as a guide only.

Which postgraduate course is right for me?

Postgraduate research programmes

These programmes involve advanced learning by conducting research, which will give you specialised knowledge in an area you've previously studied and transferable skills to stand out in the highly competitive employment market.

Professional postgraduate programmes

These programmes are taught in class, and are designed to accelerate your professional career or take it in a new direction entirely.

For more information

www.aut.ac.nz/business

Phone	+64 9 921 9906
Email	business.postgraduate@aut.ac.nz
Location	Level 8, WF building, 42 Wakefield Street, City Campus, Auckland, New Zealand
Office hours	8am to 5pm, Monday to Friday

Disclaimer: Although every reasonable effort is made to ensure accuracy, the information in this document is provided as a general guide only for students and is subject to alteration. All students enrolling at AUT should consult its official document, the AUT Calendar, which is available online at www.aut.ac.nz/calendar, to ensure that they are aware of, and comply with, all regulations, requirements and policies. The information contained in this document was correct at the time of print, August 2019.