

# POSTGRADUATE STUDY PROGRESSION

## MENTAL HEALTH AND ADDICTIONS

**Postgraduate Certificate in Health Science in Mental Health & Addictions<sup>1</sup>**  
**60 points from:**

**OPTION PAPERS**  
**Select 30 points from:**

<b>MENH802</b> Concepts of Recovery in Mental Health	30pts
<b>MENH804</b> Assessment for People with Addictions	30pts

**AND 30 points from:**

<b>MENH803</b> Mental Health Practice	30pts
<b>MENH805</b> Interventions for People with Addictions	30pts
<b>MENH801</b> Enhancing Social Participation in Mental Health	15pts
15 points from an approved postgraduate paper	15pts

<sup>1</sup>1 sem full-time, 2 years part-time.

**Postgraduate Diploma in Health Science in Mental Health & Addictions<sup>2</sup>**  
**120 points from:**

**COMPULSORY PAPER**

<b>MENH801</b> Enhancing Social Participation in Mental Health	15pts
--	-------

**AND CORE PAPER 1**

<b>HEAL840</b> Critical Enquiry for Evidence Based Practice	15pts
---	-------

**OR**

<b>HEAL811</b> Integrative Research	15pts
-------------------------------------	-------

**AND CORE PAPER 2**

<b>HEAL812</b> Health Professional Practice	15pts
---	-------

**OR**

<b>HEAL813</b> Practice Reality	15pts
---------------------------------	-------

**AND 60 points from:**

<b>MENH802</b> Concepts of Recovery in Mental Health	30pts
<b>MENH803</b> Mental Health Practice	30pts
<b>MENH804</b> Assessment for People with Addictions	30pts
<b>MENH805</b> Interventions for People with Addictions	30pts

**AND**

15 points from an approved postgraduate paper **	15pts
--	-------

**\*\*Students progressing into the MHSc pathway must take 15 points from either HEAL808 Quantitative Research II or HEAL810 Qualitative Research II.**

<sup>2</sup>1 year full-time, 3 years part-time

**Master of Health Practice in Mental Health & Addictions<sup>3</sup> - 180 points from:**

Postgraduate Diploma in Health Science in Mental Health & Addictions papers	120pts
<b>HEAL997</b> Practice Project	60pts

<sup>3</sup>1.5 years full-time, 4 years part-time.

**Master of Health Science<sup>4</sup>**  
**240 points from:**

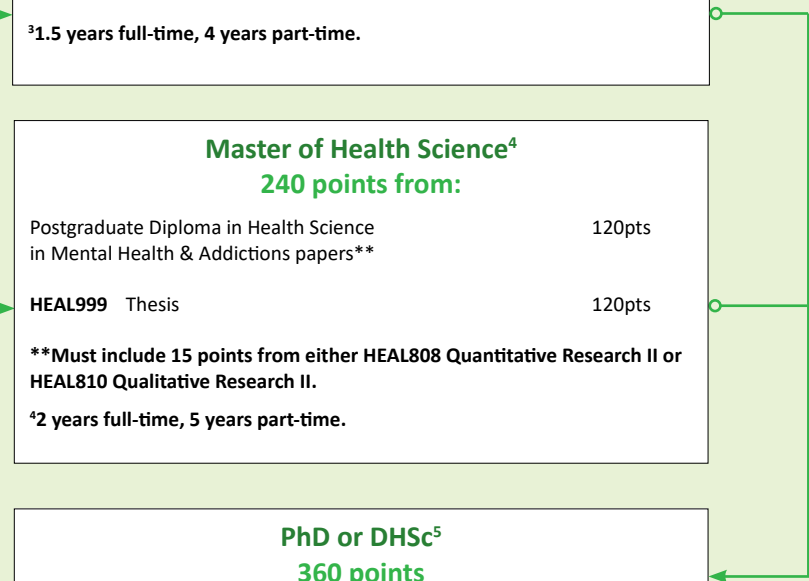
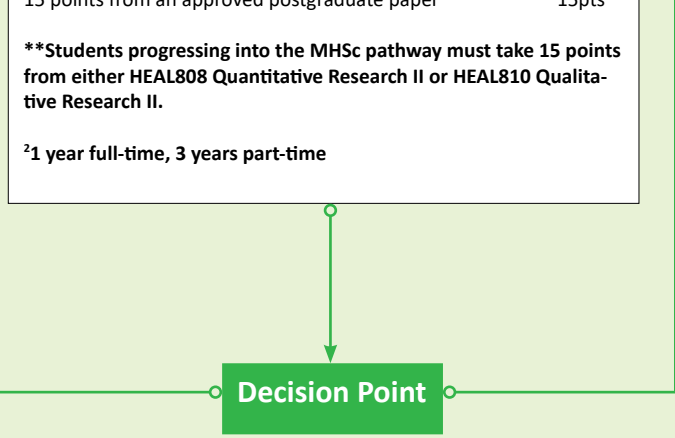
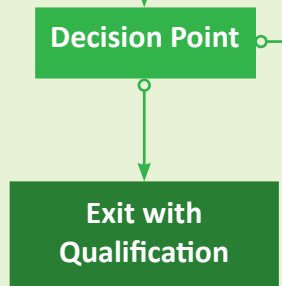
Postgraduate Diploma in Health Science in Mental Health & Addictions papers**	120pts
<b>HEAL999</b> Thesis	120pts

**\*\*Must include 15 points from either HEAL808 Quantitative Research II or HEAL810 Qualitative Research II.**

<sup>4</sup>2 years full-time, 5 years part-time.

**PhD or DHSc<sup>5</sup>**  
**360 points**

<sup>5</sup>4 years full-time, 6 years part-time.



Contact :  
 Dr Daniel Sutton  
 P: (09) 921 9999 ext 7732  
 E: dsutton@aut.ac.nz  
 Enrol now: [www.aut.ac.nz/apply](http://www.aut.ac.nz/apply)