



ACUPUNCTURE

Postgraduate Certificate in Health Science in Acupuncture¹
60 points from:

COMPULSORY COURSES

COMT801 Western Acupuncture	45pts
COMT802 Theoretical Concepts of Western Acupuncture	15pts

¹1 sem full-time, 2 years part-time.

Postgraduate Diploma in Health Science in Acupuncture²
120 points from:

COMPULSORY COURSES

COMT801 Western Acupuncture	45pts
COMT802 Theoretical Concepts of Western Acupuncture	15pts
RHAB818 Pain: Mechanisms and Management	15pts

And 15 points from postgraduate courses approved by the programme leader**

AND 15 points from CORE COURSE 1

HEAL840 Critical Enquiry for Evidence Based Practice	15pts
HEAL811 Integrative Research	15pts
MAOH801 Maori Health Research Practice - Te Rangahau Hauora Maori	15pts
PUBH810 Pacific Health Research and Design	15pts

AND 15 points from CORE COURSE 2

HEAL812 Health Professional Practice	15pts
HEAL813 Practice Reality	15pts

²1 year full-time, 3 years part-time

Master of Health Practice in Acupuncture³
180 points from:

Postgraduate Diploma in Health Science in Acupuncture courses	120pts
HEAL997 Practice Project***	60pts

OR

HEAL986 Research in Practice*	45pts
AND any remaining points from courses listed in the Postgraduate Health Science table of courses**.	15pts

*Students who enrol in HEAL986 Research in Practice are not eligible for progression into the DHSc/PhD.

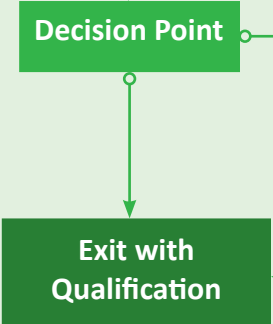
³1.5 years full-time, 4 years part-time.

Master of Health Science⁴
240 points from:

Postgraduate Diploma in Health Science in Acupuncture courses	120pts
HEAL999 Thesis***	120pts

⁴2 years full-time, 5 years part-time.

PhD or DHSc⁵
360 points
⁵4 - 6 years



Contact :
Susan Kohut
 P: (09) 921 9999 ext 7041
 E: susan.kohut@aut.ac.nz
 Enrol now: www.aut.ac.nz/apply

**Refer to Postgraduate Health Science table of courses.
 ***Entry is subject to completion of all course work, and approval from the Programme Leader.