

LEADERSHIP AND MANAGEMENT

Postgraduate Certificate in Health Science in Leadership & Management¹
60 points from:

COMPULSORY PAPER
HEAL817 Leadership and Management I 15pts

OPTION PAPERS
AND 45 points from:

HEAL818 Leadership and Management II	15pts
HEAL819 Interprofessional Practice Innovation	15pts
HEAL820 Health Economics	15pts
HEAL821 Clinical Governance & Quality	30pts
HEAL822 Quality Evaluation in Health	15pts
HEAL837 Health Policy Applied	15pts
HEAL845 Professional Supervision	30pts
HEAL858 Exponential Health Technologies	15pts
HEAL859 Digital Health Disruption	15pts
HEAL860 Digital Health Leadership	15pts
HEAL861 Digital Health and the Future of Work	15pts
MAOH803 Effective Supervision in Māori Health	15pts

¹1 sem full-time, 2 years part-time.

Postgraduate Diploma in Health Science in Leadership & Management²
120 points from:

COMPULSORY PAPER
HEAL818 Leadership and Management II 15pts

AND CORE PAPER 1
HEAL840 Critical Enquiry for Evidence Based Practice 15pts
OR
HEAL811 Integrative Research 15pts

AND CORE PAPER 2
HEAL812 Health Professional Practice 15pts
OR
HEAL813 Practice Reality 15pts

OPTION PAPERS
AND 75 points from:**

HEAL817 Leadership and Management I	15pts
HEAL819 Interprofessional Practice Innovation	15pts
HEAL820 Health Economics	15pts
HEAL821 Clinical Governance & Quality	30pts
HEAL822 Quality Evaluation in Health	15pts
HEAL823 Innovation in Primary Health Care	30pts
HEAL837 Health Policy Applied	15pts
HEAL845 Professional Supervision	30pts
HEAL858 Exponential Health Technologies	15pts
HEAL859 Digital Health Disruption	15pts
HEAL860 Digital Health Leadership	15pts
HEAL861 Digital Health and the Future of Work	15pts
MAOH803 Effective Supervision in Māori Health	15pts
MAOH804 Te Hau o te Ora Hauora Māori Development	15pts
MAOH805 Te Pū o te Ora - Māori Health Praxis	15pts
HLAW801 Health Law	15pts

****Students who progress into a thesis must have completed 15 points from either HEAL808 Quantitative Research II or HEAL810 Qualitative Research II.**

²1 year full-time, 3 years part-time

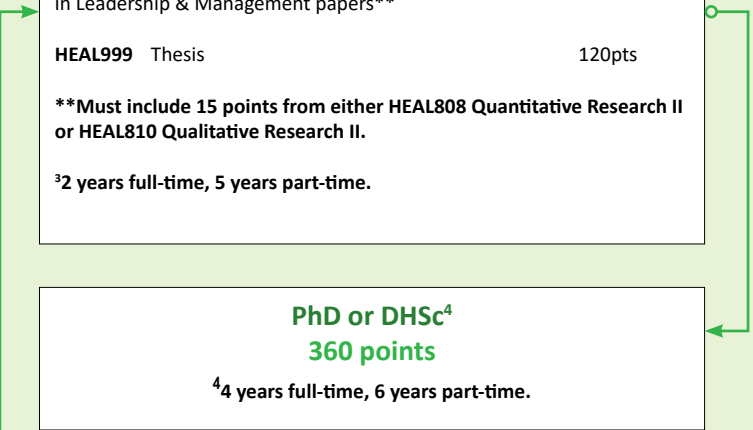
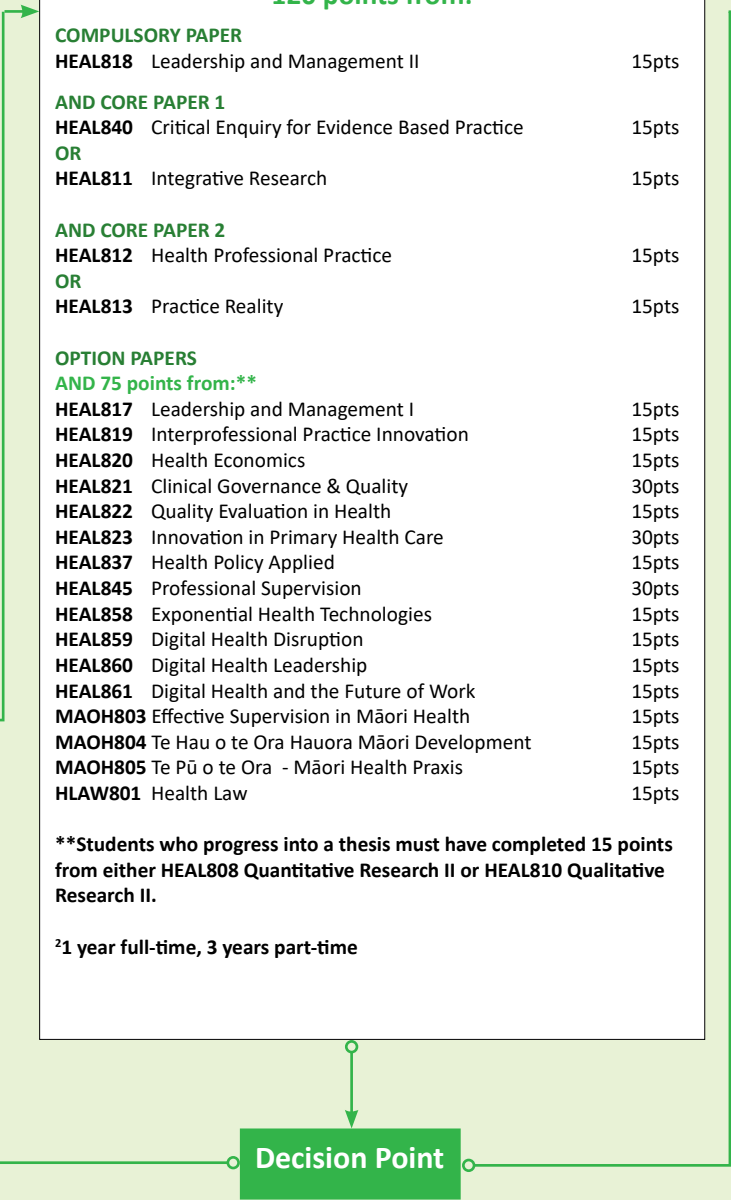
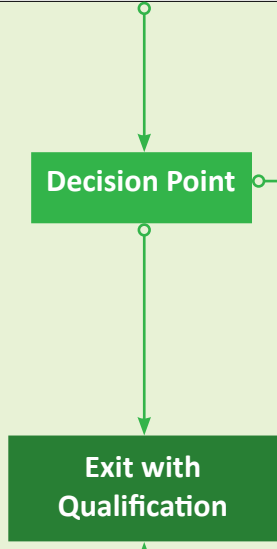
Master of Health Science³ - 240 points from:

Postgraduate Diploma in Health Science in Leadership & Management papers**	120pts
HEAL999 Thesis	120pts

****Must include 15 points from either HEAL808 Quantitative Research II or HEAL810 Qualitative Research II.**

³2 years full-time, 5 years part-time.

PhD or DHSc⁴
360 points
⁴4 years full-time, 6 years part-time.



Contact :
Dr Karen Webster
 P: (09) 921 9999 ext 6745
 E: karen.webster@aut.ac.nz
 Enrol now: www.aut.ac.nz/apply