

Industrial Construction Integration Specialization Project

---- Wakakura Resort



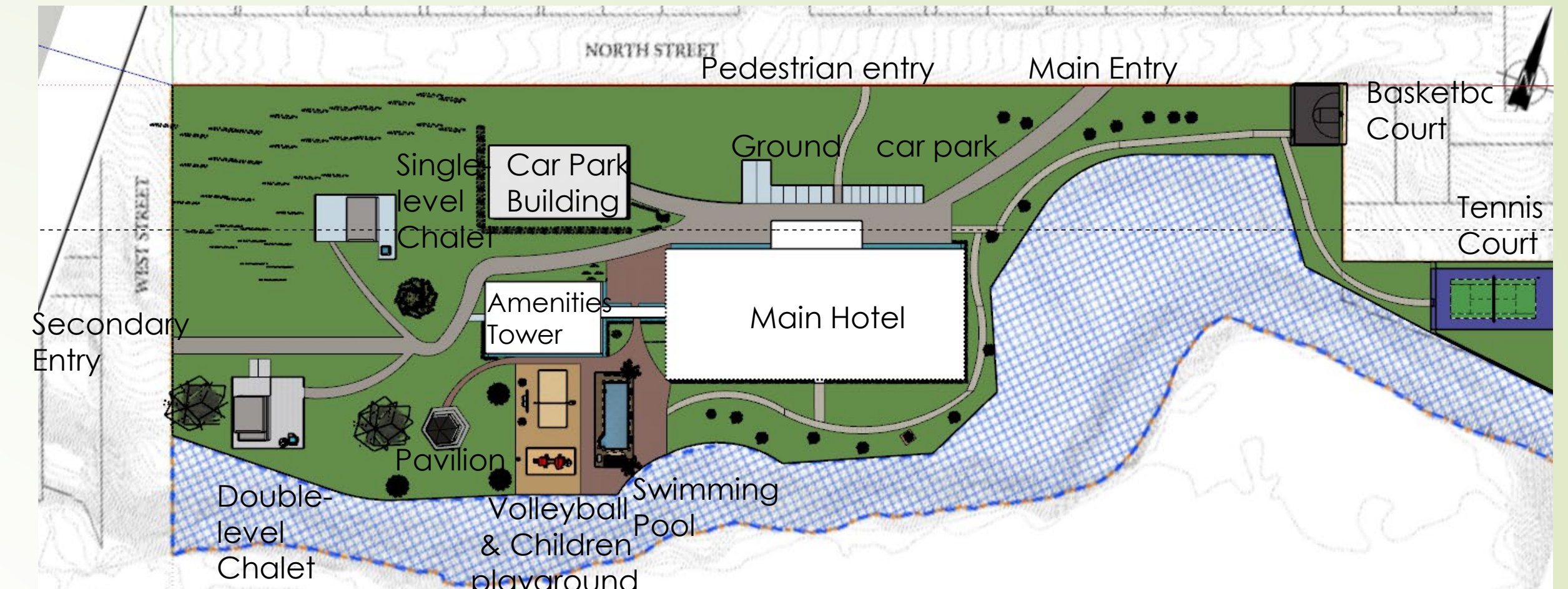
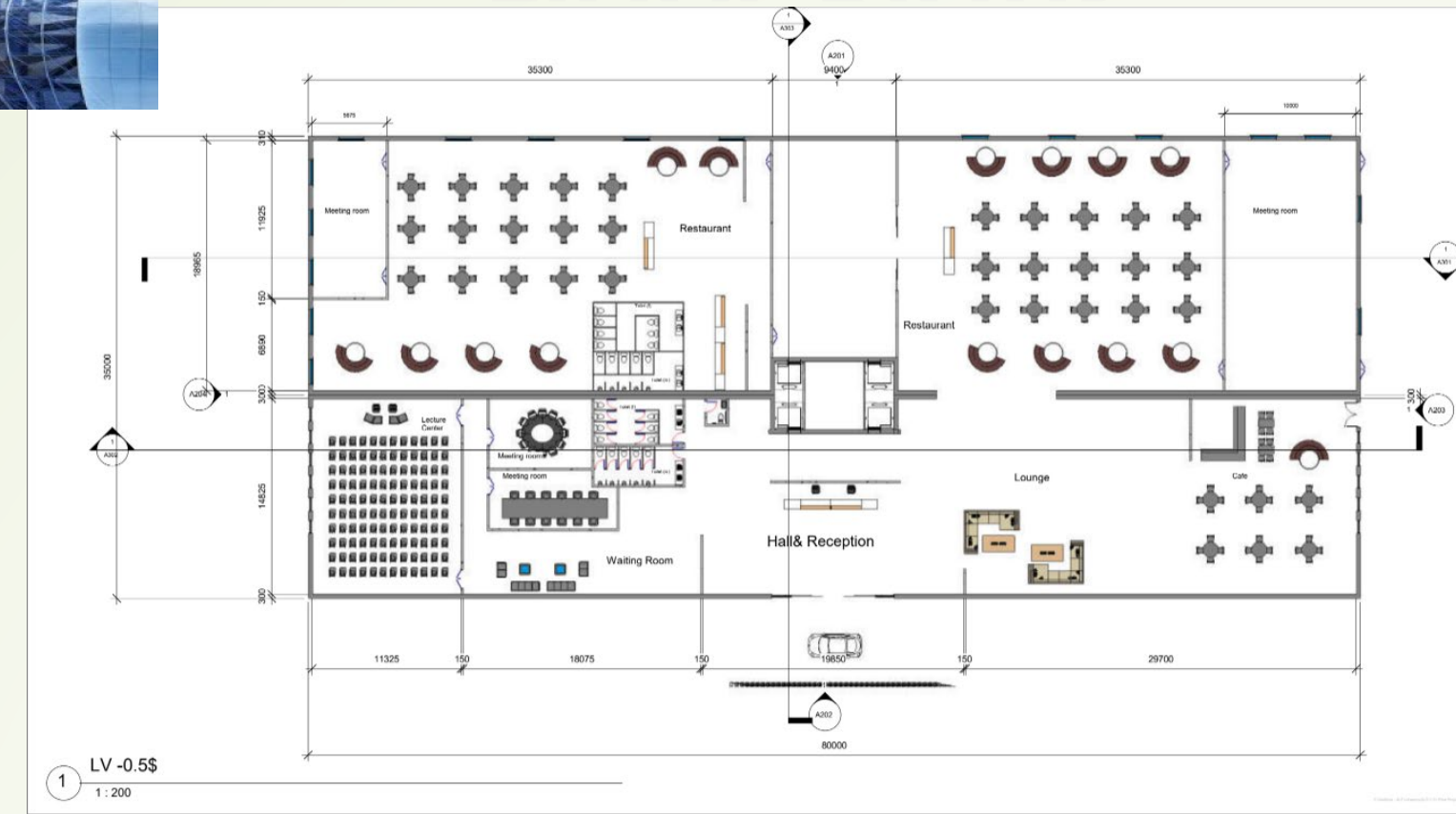
3D Mode Exterior



Interior Design



Floor Plans



Site Layout/Setup

- Site Facilities
- Construction Relative Facilities
 - Loading/Unloading facility
 - Wheel Washing Facility
 - Waste Management Facility
 - Transporter Carpark
 - Management Relative Facilities
 - Site office & Meeting room
 - Security and Entry control facility
 - Amenity facilities
 - Lunchroom and Rest Room
 - Sanitary Facility
 - Washing Facility with Locker
 - Carpark
 - Site Layout
 - Site Access
 - Traffic Management

Site location: 2-88 Wakakura Crescent, Devonport, North Shore

Site Area: 28775m²

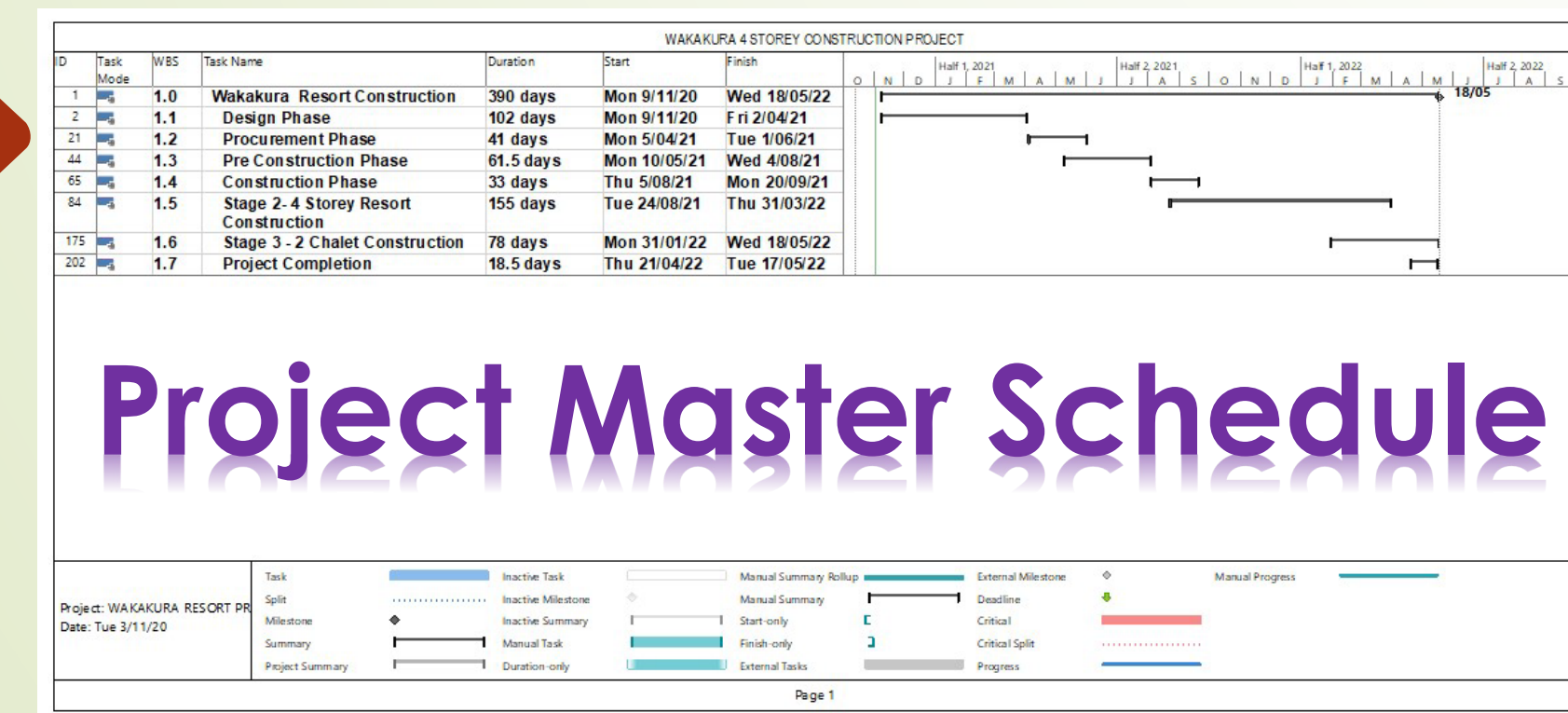
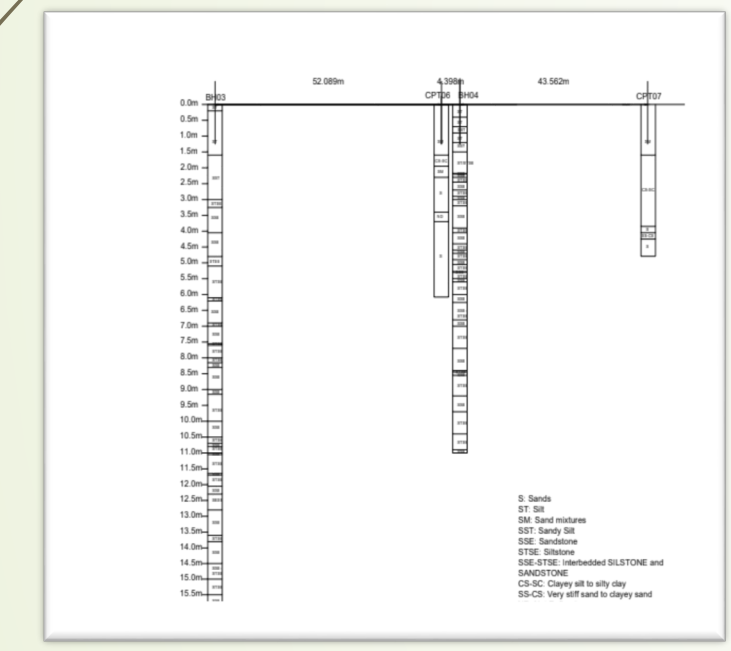
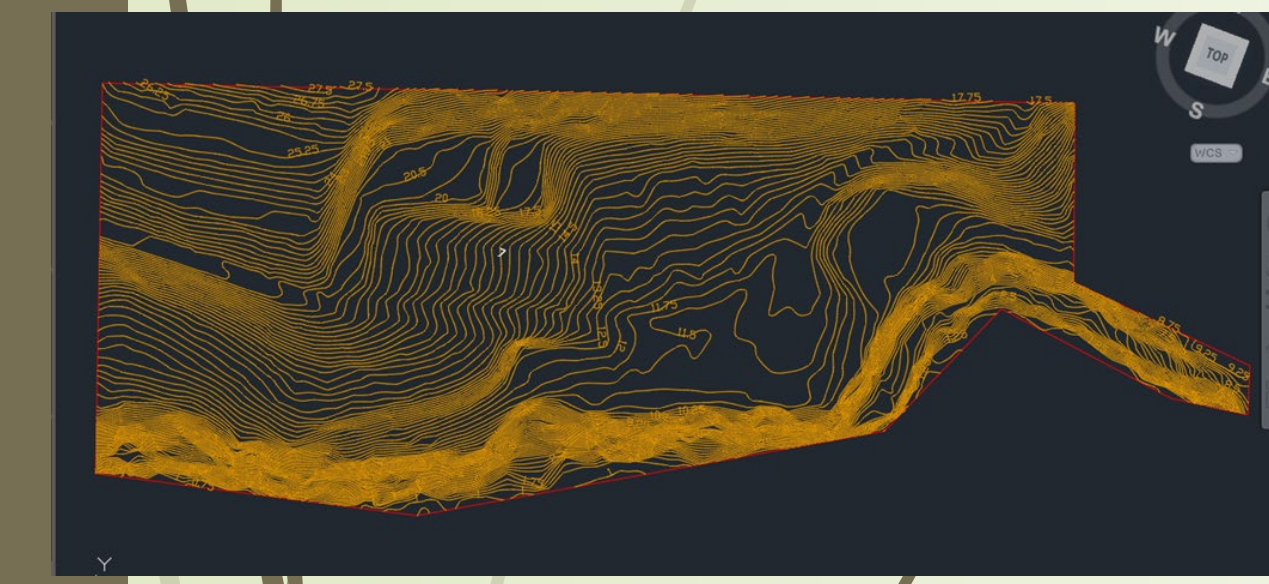
Project Cost: 38.75 million

Project scope:

- 4-stories main hotel
- Amenities tower
- Single level chalet
- Double level chalet
- Ancillary facility

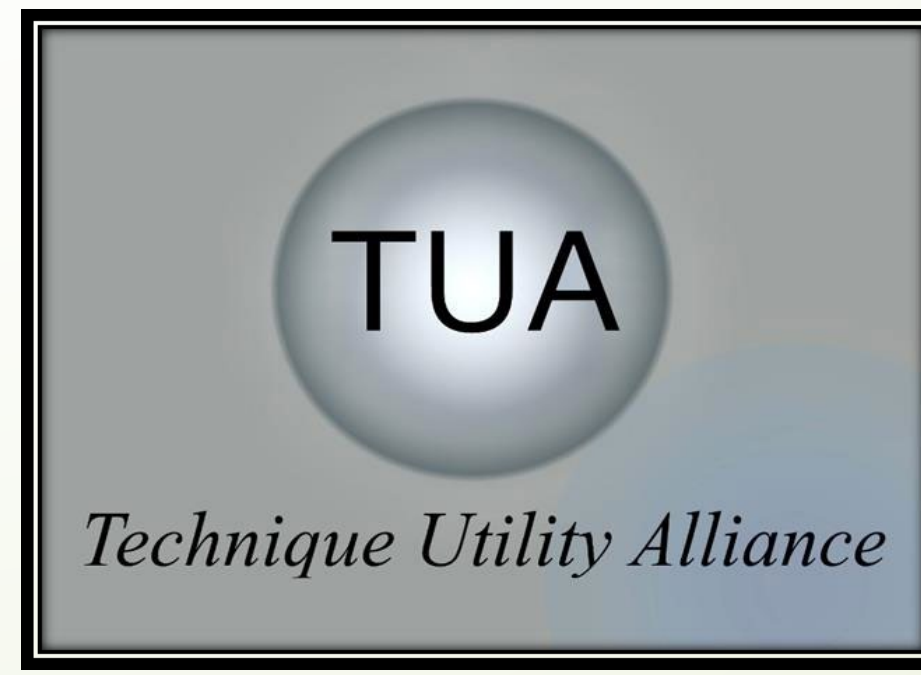


GEO-Technical Design



Project Master Schedule

- Management plan:**
- Work Breakdown Structure
 - Work Management Structure
 - Risk Management
 - Resources Management
 - Health & Safety
 - Responsibility Matrix



Name:	Position	Specialization
Fred KALKAUA	Project Manager/ team leader	Building Engineer
Leibniz	Principle Engineer	Civil, Construction
Anson Zheng	Chief Architect	Construction Engineer
Max Zheng	Site Engineer	Construction Engineer / Quantity Surveyor

About TUA:

Technique Utilize Alliance (TUA) is one of the leading Engineering design groups here in New Zealand, is pleased to be part of your project proposal development to design and build an urban resort including amenities in Auckland. Following your request TUA design and engineering group to provide you with a design specification it is a pleasant honour for you to have the trust for our team to provide you with the technical expertise for the project.

TUA Team Profile

Address: 42 Symonds Street, Auckland 1010
Phone: 0800 282 486 **Mobile:** 0224047428
Email: technutia@org.nz
Web site: www.techdesign.com

Structural Model



Beam: 500x500mm, 8D32
Column: 500x700mm, 9D24
Slab: Shanlton Hollowcore 300 Elematic with depth of 300mm

	Column axial (KN)	Column BM(KN.m)	Column SF(KN)	Beam BM(KN.m)	Beam SF(KN)
1.2G+1.5Q	4856.48	56.51	14.12	1122.65	751.59
1.0G + 0.4ψcQ + Eu	2453.16	353.92	145.61	776.07	444.29

