

WHĀNAU GUIDE

AUT

TE WĀNANGA ARONUI
O TĀMAKI MAKAU RAU



TOP 40
WORLDWIDE
Young University

**AUCKLAND
UNIVERSITY
OF TECHNOLOGY**



Natalie Devery
Ngāti Mutunga, Te Atiawa, Tainui/Maniapoto
Human Rights Lawyer

Growing up, Natalie Devery saw many people struggling. Having always had a passion for social justice and helping people, she would often ask herself how she could make a difference. Eventually she found her answer and decided to study a law degree at AUT. She still strongly remembers her lecturer talking about Te Tiriti and challenging students with a wero; to always think from a different perspective. As a barrister on some of the country's most defining cases, Natalie has tried to honour this wero throughout her career. Now Natalie is one of our great graduates sharing their stories of how their time at AUT inspired them to turn their passion into something rewarding and meaningful.

FIND YOUR GREATNESS

aut.ac.nz/great-graduates

CONTENTS

MŌ MĀTOU About AUT	4	NGĀ AKORANGA Study	24
NGĀ WAI O HOROTIU Our marae	8	MANGA AND KURA Faculties and schools	25
HE PAPA WĀNANGA Campuses	10	TE KAUPĒKA TUATAHI The first semester	30
TAUTOKO Support	12	TONONGA Applying	32
TE TARI TAKAWAENGA MĀORI Māori student support	13	RĀRANGI WĀ TONONGA Application timeline	33
KAIWHAKAMAHERE MĀORI Counsellor for Māori	14	HE TĪWHIRI TONONGA Top tips for applying	34
NGĀ RŌPŪ TAUIRA MĀORI Tauira Māori Associations	15	HEI WHAKAMĀRAMA ANŌ Find out more	35
MANAAKI ĀKONGA Student Support	16		
PŪTEA Finances	18		
NGĀ KARAHIPĪ Scholarships	19		
UTU WHAKAURU Fees	20		
KĀINGA ĀKONGA Accommodation	22		

WELCOME TO AUT

E ngā mana, e ngā reo

E te iti, e te rahi

E ngā mātāwaka o ngā tōpito o te ao

Ngā mahuetanga iho e kawē nei i ngā

moemoeā o rātou mā

Tēnā koutou katoa

To the prestigious, the many voices

The few, the great

To those of all races and creeds

We who remain to fulfil the dreams and aspirations of the ancestors

Greetings one and all

Piki mai rā, kake mai rā,

Nau mai, haere mai ki tēnei o ngā wānanga

Whakatau mai i raro i te korowai āhuru

o Te Wānanga

Aronui o Tāmaki Makau Rau

Climb, ascend

Embark on the journey of knowledge

Let us at AUT embrace and empower you

To strive for and achieve excellence

**Te whakatupu i te kōunga, i te mana taurite me ngā
tikanga matatika, i ngā pūkenga ako,
i ngā pūkenga whakaako me te āta rangahau hei hāpai
i ngā hāpori whānui o te motu, otirā, o te ao.**

To foster excellence, equity and ethics in learning, teaching, research and scholarship, and in so doing serve our regional, national and international communities.

NAU MAI, HAERE MAI, PIKI MAI



Takahia te ara poutama ki ngā pae tāwhitiwhiti, tēnā koutou, tēnā koutou, tēnā koutou katoa.

It is my pleasure to welcome you to Te Wānanga Aronui o Tāmaki Makaurau – the Auckland University of Technology Whānau Guide. Whether you are thinking of studying with us or are a current student, we hope this guide provides you and your whānau with the information needed to support your journey at AUT. We are committed to your success, and trust that this guide will support that outcome.

Our Office of Māori Advancement works closely with AUT Māori staff, students and the wider community to implement Mātauranga Māori throughout the university and is focused on building strong relationships with mana whenua, iwi and our communities.

Our mission is to achieve equity and excellence by equipping our students with the tautoko, knowledge and skills to succeed in the contemporary Māori world. Our graduates, of whom we are proud, are confident, inspirational and in demand – they are our greatest taonga.

Nau mai, haere mai.

Professor Pare Keiha

*Te Whānau-a-Taupara o T'Aitanga-a-Māhaki,
and Rongowhakaata*

QSO, MBA, MComLaw, MSc, PhD Auck., FRSA,
MInstD, MRSNZ

Pro Vice-Chancellor for Māori Advancement
Tumuaki / Dean of Te Ara Poutama and
the Faculty of Culture and Society

Mō mātou

ABOUT AUT

NEW ZEALAND'S SECOND LARGEST UNIVERSITY

Ranked in the top 1% of the world's universities, we're one of the best modern universities globally. We embrace new technologies to lead the learning of tomorrow, and prepare our students for the rapidly changing world.



3+3

3 campuses &
3 specialist facilities



60+ research centres and
institutes with world-
class expertise



CHOOSE FROM OVER

250

COURSES OF STUDY



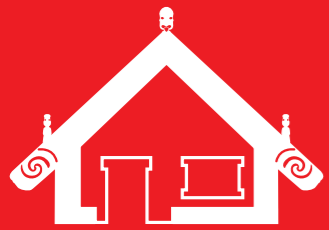
29,100

STUDENTS



100,000+

alumni



Ngā Wai o Horotiu marae
– our whānau, cultural
and spiritual centre



Supportive whānau
environment



2,533

tauirā Māori

381

postgraduate tauira,
including

68

doctoral candidates

12%

of AUT students
are Māori

5%

of AUT academic
staff are Māori

Ngā Wai o Horotiu

OUR MARAE

The gateway to AUT, Ngā Wai o Horotiu marae is located on the AUT City Campus. Ngā Wai o Horotiu marae is a whānau, cultural and spiritual centre. It embraces the history of Māori and welcomes the diverse cultures at AUT.

The marae is one of the ways AUT acknowledges the importance of the principles of the Treaty of Waitangi and expresses our deeply held belief that AUT is a centre of learning for all peoples, but also a place where Māori have a special and distinct role.

Our marae's whareniui (meeting house) was named Te Pūrengi by the local iwi Ngāti Whātua. The name represents the ropes which hold the mast of a waka in place. Te Pūrengi is the focal point of Ngā Wai o Horotiu. Our wharekai (dining room) is called te Kaipara after the Kaipara Harbour. Ngāti Whātua traversed the Kaipara from the North. The word 'para' is a reference to the para fern which is a traditional Māori delicacy. Kai-para means 'to eat the para fern'. It's a fitting name for our dining room. Kaipara – the house of gourmet food.

You can find Ngā Wai o Horotiu on the corner of Wellesley and St Paul Street in Auckland.

He Papa wānanga

CAMPUSES

THREE TEACHING CAMPUSES

THREE SPECIALIST FACILITIES



City

At the University's biggest campus located in Auckland's CBD, students study architecture, business, communications, law, design, hospitality and tourism, economics, computer and mathematical sciences, language and culture, social sciences, engineering and science, amongst others. The campus offers a number of state-of-the-art buildings, including the Engineering, Computer and Mathematical Sciences building.

Warkworth Radio Astronomical Observatory

Located 70km north of Auckland, New Zealand's only radio astronomical observatory houses two radio telescopes maintained by AUT's Institute for Radio Astronomy and Space Research.



North

The North Campus, situated on Auckland's North Shore, is home to the University's health, teacher education, and sport and recreation programmes, and includes the AUT Integrated Health community clinics on Akoranga Drive. The clinics offer services across oral health, occupational therapy, podiatry, counselling psychology, psychotherapy, nursing, and physiotherapy.

AUT Millennium

AUT Millennium, located in Mairangi Bay, is a high-performance sports development and sports research centre, which aims to help the community be healthy and New Zealand's top athletes to excel.



South

Located in Manukau, the South Campus provides undergraduate and postgraduate programmes in education, business, computer and information sciences, design, health science, sport and recreation, and law. The campus is also a hub for community engagement and events. The South Campus is the home of the award-winning Mana Hauora building.

AUT Centre for Refugee Education

Located in Mangere, the centre provides an on-arrival six-week education programme for the refugees who arrive in New Zealand each year under the government quota scheme.



"In my first year, my partner and I moved from Rotorua to Auckland. Being Māori and away from home, I was worried that I would somehow miss home or not manage my time well or even be overwhelmed by the workload and general life things. But AUT helped me to find my home away from home. AUT's Office of Māori Advancement and Titahi Ki TUA Māori Student Association have been two of the major support systems that have made my journey here enjoyable. I'm currently the president of Titahi Ki TUA, and I would invite any Māori students at AUT to join our whānau."

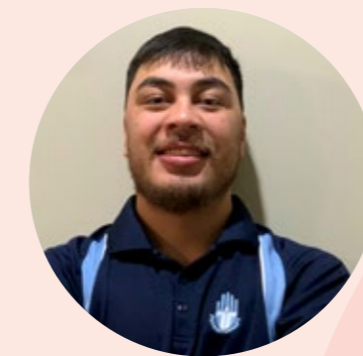
Matangireia Mita Ngarua Yates-Francis

Te Arawa, Te Aitanga-a-Mahaki, Rongowhakaata, Ngāti Maniapoto
Master of Architecture (Professional) student
Bachelor of Design in Spatial Design

"I was the first person in my family to go to uni, and I didn't know anyone at AUT. The support systems in place for first-year Māori students really set me up for success, particularly the taura kaiwhatu tutoring programme. I had a fantastic tutor in my first year, and was a tutor myself for several years afterwards. Being given the opportunity to think and talk about the law in a Māori context, and building relationships with other Māori students was invaluable to me, particularly as I found my feet in an unfamiliar environment."

Mackenzie Blucher

Te Rarawa, Ngāti Kuri
Graduate Policy Advisor, Community and Social Policy, Auckland Council
Bachelor of Laws and Bachelor of Arts in International Studies



"I'm proud of being Māori and being able to make a difference for our whānau and community. But I'm most proud of putting in the mahi at university to now be able to live out my dream job as a physiotherapist. While I was at AUT, I built lifelong friendships, which I will cherish forever. I was able to meet a lot of people from near and far. I was privileged enough to be a part of the AUT Māori association Titahi Ki TUA, which was a home away from home for me and a big part of my university journey."

Terence Pohatu Waikite Thornton Apiata

Tuhoe, Ngāti Awa, Te Whakatohea, Ngāpuhi
Rotational Physiotherapist, Waikato District Health Board
Bachelor of Health Science (Physiotherapy)

"Leaving home and moving to New Zealand's biggest city where I barely knew anyone was a massive thing for me. However, the AUT Māori Liaison team, Te Tari Takawaenga Māori, supported me throughout this, and I can't thank them enough. The whānau room is such a safe space, and there are so many friendly faces that will help you with any challenge big or small. One of my biggest achievements was being asked to become a peer mentor through the Māori Liaison team. That was a real privilege to be recognised as someone who they believed would be able to provide academic mentoring and general university advice to first-year Māori science students."

Annalise Taylor

Taranaki (Ngā Mahanga)
Bachelor of Advanced Science (Honours) in Biomedical Science student



Tautoko

SUPPORT

Te Tari Takawaenga Māori

MĀORI STUDENT SUPPORT

The team at Te Tari Takawaenga Māori is passionate about providing access and opportunities to taira Māori to help them feel at home, engaged and able to achieve as Māori at AUT. Our whānau are here to listen, learn and support, and our events and activities focus on Māori cultural distinctiveness. Our te kaitakawaenga Māori advisors can help with a range of queries, and you can talk to us about anything, whether it's study related or personal.

To find out more visit aut.ac.nz/maori

The first six weeks at AUT

Ngā Rā Whakaterea (days of enlightenment)

AUT has a commitment to Māori as tangata whenua. The essence of that commitment begins with the pōwhiri, welcoming new taira Māori and their whānau to AUT. The pōwhiri is followed by the whānau and taira information sessions, designed to share tips on how whānau can best support new taira while they study at AUT and what new taira can do to make it easier to start university. These sessions also cover key insights into the admissions process, StudyLink information, academic and student life, financial aid, scholarships, grants and more.

AUTaia (Māori transition programme)

This programme is designed to help taira adjust to life at AUT through a range of tailored workshops that cover practical, cultural, academic and study-related advice. It also gives taira the chance to meet and network with other taira and kaimahi.

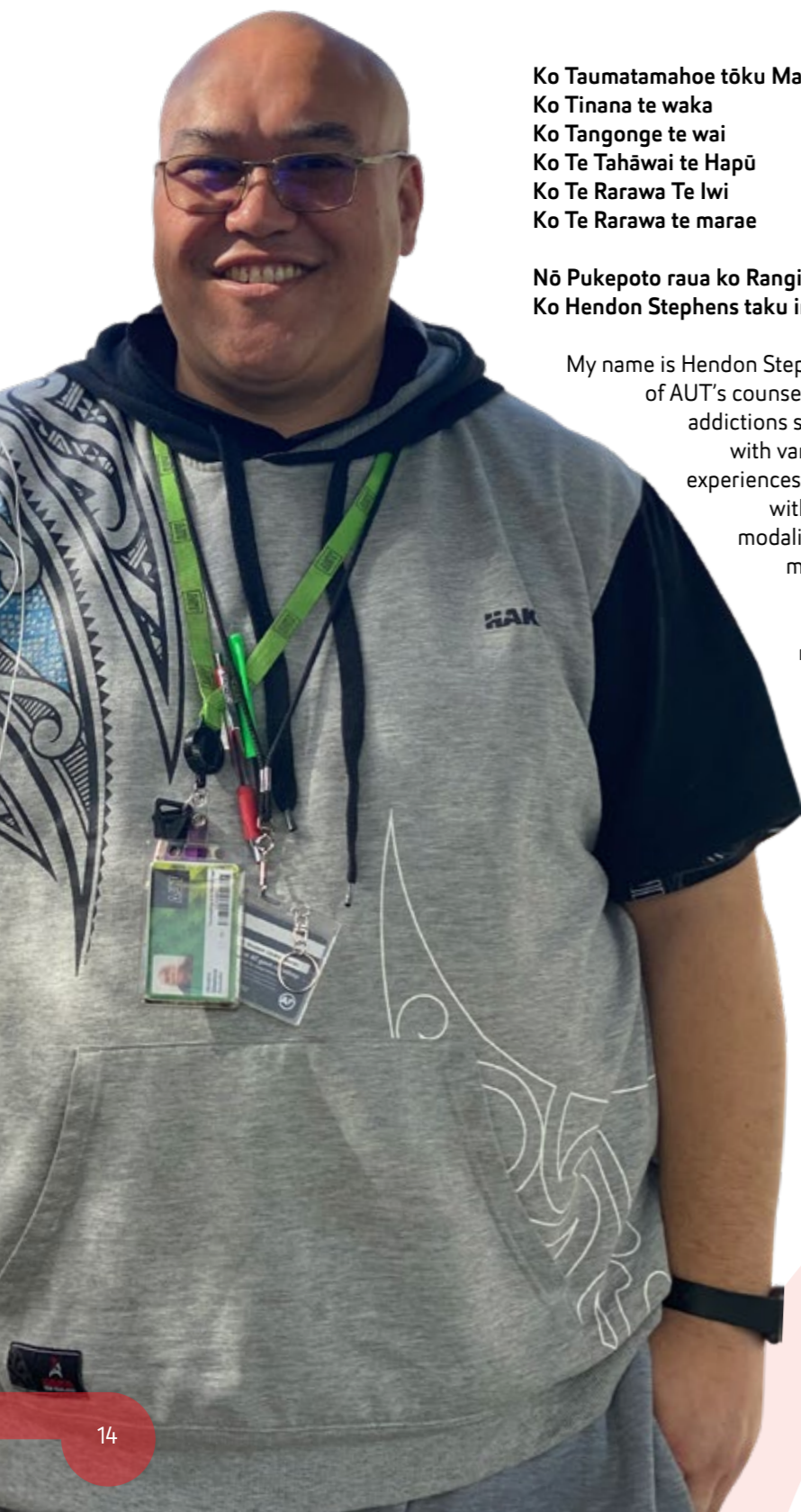
Tuākana Māori peer mentors

Tuākana Māori peer mentors are current taira who are employed, trained and supervised by AUT to work with first-year taira Māori to help them succeed academically, feel socially and culturally connected, and support their overall wellbeing. The tuākana work alongside taira Māori to meet their learning needs and access study resources in ways that align with their values, culture and style of learning. Taira can talk to a tuākana about everything related to being a taira, from study tips to general advice about university life.



Kaiwhakamahere Māori

COUNSELLOR FOR MĀORI



**Ko Taumatamahoe tōku Maunga
Ko Tinana te waka
Ko Tangonge te wai
Ko Te Tahāwai te Hapū
Ko Te Rarawa Te Iwi
Ko Te Rarawa te marae**

**Nō Pukepoto raua ko Rangi Point ahau
Ko Hendon Stephens taku ingoa.**

My name is Hendon Stephens, the first Māori and first male graduate of AUT's counselling programme. I have a background in the addictions sector, working alongside addicts in recovery with varying degrees of mental health concerns. My experiences have enabled me to work in the community, with youth and within our prison systems using modalities from a narrative, CBT, solution-focused, motivational interviewing and strength-based practice. My practice is a delicate blend of westernised and indigenous principles that represent my way of being and place in te ao Māori and Pākehā realms. This connects me to my spiritual roots which has provided me guidance throughout my counselling practice and personal journey.

**"Mā te wairua tātou e kawē, koia rā
taku mahi, kia mauritau te ākongā kia
rere ki ngā taumata"**

"My role is about healing from within, assisting taurira to find their wings so that they can fly"

Ngā rōpū tauira Māori

TAUIRA MĀORI ASSOCIATIONS

Ko ngā aronga hira o Titahi Ki TUA hei tautoko i ngā tauira Māori katoa o AUT, hei whakawhanake i a rātou whaingā, wawata, moemoeā rānei, hei waihanga hoki he āhuru mōwai mō tātou. Anei ngā whakatauki e rima hei urungi i tō tātou waka.

Titahi Ki TUA is the AUT Māori Students Association, and offers taurira Māori a place where they can come together to share ideas, share identity, draw support, meet other Māori students, and practise culture through kapahaka; all in a marae environment.

Rōpū on campus:

- Te Rau Kawakawa – Hauora Māori Association
- Te Aro Ture – Māori Law Association
- Piki Ake Kaipakihi Māori – Māori Business group

To find out more check out Titahi Ki TUA's Facebook page.



Manaaki Ākonga

STUDENT SUPPORT

AUT is a modern and innovative university with endless opportunities, and a supportive culture that celebrates diversity and is committed to improving our local and global communities. Our students are at the heart of everything we do, and we're proactive in enabling them to succeed and be ready for any challenge. In addition to the specific support for Māori students mentioned on the previous pages, all AUT students can also access the services below.

Getting started on the uni journey

Studying at university is exciting and can be quite an adjustment. That's why AUT helps all new students transition to university life by delivering a wide-ranging orientation programme on campus and online at the start of each semester. AUT's app also provides up-to-date news, events, and information about AUT anytime, anywhere.

A home away from home

We want students and their whānau to feel comfortable and confident that students are being looked after at AUT. Safety for students on campus is our priority, and our friendly security staff are available day and night to help. We actively encourage students to be aware of their wellness needs – mind, body, and spirit. All AUT students have access to medical centres on campus, free and confidential counselling sessions, peer support and programmes to develop better self-knowledge and resilience.

Helping students achieve their academic goals

We do everything we can to help students achieve their academic goals and feel ready for a successful career. Students have access to all the people, resources and technology they need to make the most of their learning opportunities. Our support services include academic support, childcare, free technology access and financial assistance, as well as tailored support for postgraduate research students. AUT offers some of the most comprehensive student support services in New Zealand, and our Student Hub is the best place to learn more about these services.

Enabling opportunities for a vibrant uni experience

We offer a range of spaces and initiatives for students including clubs, events, sporting opportunities and state-of-the-art recreational facilities. Our clubs are student-led and cover social, sustainability, cultural and academic interests. AUT is a leading sports university, with state-of-the-art sports facilities at AUT Millennium, gyms at every campus, and a swimming pool and courts for tennis, volleyball, basketball and other sports at the South Campus. Our brand-new Te Āhuru Recreation Centre at the City Campus is also a great space for students to connect with friends and follow their interests.

Celebrating our people

We celebrate diversity and our commitment to the Treaty of Waitangi with passion, curiosity and pride. We have a strong commitment to Māori and Pacific community advancement, and have dedicated teams to support all these groups at AUT, including a dedicated disability support team. We were the first university in New Zealand to achieve the Rainbow Tick, and our dedicated rainbow room is a great place to study, meet friends and access support and resources. We're committed to equity of access and opportunity for students, staff and visitors, and support the principles of Kia Ōrite: Code of Practice for an inclusive tertiary environment. Our Student Association (AUTSA) advocates and represents the interests of all AUT students, and shares students' voices through its Debate magazine.



Beyond learning and into employability

Our services, competitions and awards offer students enriching life experiences that will support their career once they graduate. These opportunities can help them gain an edge in the marketplace through workplace experience, international exchanges, industry connections, and CV and interview preparation for when they're ready to start their career. Our CO.STARTERS@AUT programme, X Challenge competition or AUT Ventures Ltd are also a great incubator for students' entrepreneurial ideas.

Supporting students during the COVID-19 pandemic

Since the start of the pandemic, AUT's approach has been based on official guidance from the New Zealand government and we've put in place contingency plans to ensure students can successfully complete their studies during any alert level. Our plans focus on keeping students as safe as possible, while retaining as much of the normal learning and wider student experience as we can.



Pūtea

FINANCES

Ngā karahipi

SCHOLARSHIPS

There's a wide range of scholarships and awards available to AUT students at all stages of their study, including the following AUT scholarships for school leavers. You can also search the AUT scholarships database for other AUT scholarships and externally funded scholarships from iwi and industry organisations. Make sure you do your research and apply.

To find out more about what scholarships are available visit aut.ac.nz/scholarships

Find Your Greatness Scholarships – Kiwa

AUT's Find Your Greatness undergraduate scholarships for school leavers reflect AUT's commitment to creating great graduates. These three-year scholarships recognise students' academic achievement, as well as students' potential leadership ability and contribution to their school or community, cultural pursuits, or sport at a representative level. The Kiwa scholarships (Māori and Pacific) are awarded to academically able students demonstrating leadership potential who register with either Māori or Pacific ethnicity in the AUT student management system (Arion). These scholarships are nationally contestable.

Accommodation – Office of Māori Advancement

AUT's Office of Māori Advancement offers accommodation scholarships to support taura Māori residing in approved AUT accommodation. These undergraduate scholarships recognise a taura's academic achievement, potential leadership ability and contribution to their school, community or cultural pursuits. The scholarship is paid directly to AUT accommodation as a contribution to rental costs.

Ngāti Whātua Ōrākei Community Partnership Scholarship

In recognition of its partnership with Ngāti Whātua Ōrākei, AUT has established undergraduate scholarships to increase participation, retention and success of Ngāti Whātua Ōrākei descendants who have demonstrated the academic potential to succeed at university level. As well as recognising academic achievement, these scholarships recognise the taura's potential leadership ability and contribution to the school and community.

Utu whakauru

FEES

To give you an idea of approximate costs, the 2022 tuition fees are shown below (based on full-time study and completing 120 points per year). All fees are in NZ dollars and include GST.

For more information about fees to study at AUT visit aut.ac.nz/fees

Tuition fees

Undergraduate tuition fees for domestic students can range from approximately \$3,210.00 to \$10,654.00 per year. Eligible first-time domestic students are entitled to one year of free fees.

Other fees students may have to pay

- Compulsory Student Services fee of \$934.07 for 120 points*
- Additional fees for course materials or elective courses

*Covers the provision or subsidy of various services that students access.

Fees-free study

Eligible students starting tertiary education receive one year of full-time study fees-free.

If the student:

- Is a New Zealand citizen (which includes those from the Cook Islands, Niue and Tokelau); or
- Is an Australian or New Zealand resident who has lived in New Zealand for at least three years while holding a residence class visa; or
- Is a New Zealand resettled refugee

And

- Was enrolled at school during or after 2017 but isn't currently enrolled; or
- Hasn't previously undertaken tertiary study of more than 60 credits (equivalent to half a year full-time) at NZQF level 3 or above, except while they were at school

Included in the free fees are all compulsory fees (tuition, services etc) up to \$12,000 and tertiary study at any level. The policy will cover one year's study which is usually 1 EFTS/120 credits or points.



"Moving from Gisborne to Auckland to attend university was a little intimidating, but I've had tautoko from my hapū by receiving a Te Whanau-A-Taupara Scholarship in Leadership and Excellence. I've also been awarded the Kiwa AUT Undergraduate Scholarship. At first, Auckland made me feel lost because it's such a huge city, and the people are unfamiliar. But Auckland also made me realise how small my world was back in Gizzy. Studying at AUT has given me the opportunity to become more confident and independent, and as a Māori student, I know I can always rely on the Māori Liaison team."

Maia Te Hauora Kingi-Thomas

Te Aitanga-a-Mahaki, Ngāti Porou, Ngāi Tūhoe

3rd-year student, Bachelor of Arts in Criminology and Criminal Justice

"I was excited to leave my hometown of Ohaeawai in Northland and make the most of the opportunities that Tāmaki Makaurau presented to me. I was fortunate enough to be awarded the McDonald's Te Tai Tokerau scholarship for Māori students in Year 13, which enabled me to live at Akoranga Student Village – AUT's student accommodation near the North Campus – with my fellow scholarship recipients. Living in student accommodation in my first year really set me up for success during my university experience. It also helped me make lifelong friends. The Māori student support team also helped me push through all the hardships I faced. They were my whānau away from home."



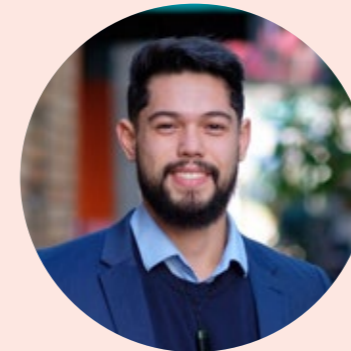
Keani Erstich-Coles

Ngāpuhi, Ngāti Rangī, Ngāti Kahu, Ngāi Takoto

Campaign Executive, TVNZ

Bachelor of Communication Studies in Radio

"I admired the variety of subjects AUT had to offer, and the calibre of legal academics and practitioners among the lecturing staff was outstanding. In addition, when reviewing the scholarships offered by various universities, the scholarship opportunities I received from AUT were very well-presented and the scholarship I was offered provided major financial assistance. The main highlight of my time at university was learning the law from such a knowledgeable and experienced group of lecturers and tutors. A stand-out educator for me was Associate Professor Khylee Quince who had a wealth of knowledge and experience but was always relatable."



Levi Taipari Farrell

Ngāi Te Rangī

Solicitor, Duncan Cotterill

Bachelor of Laws

"AUT has great scholarship opportunities and I was privileged to receive an AUT school leaver scholarship when I left high school. I had heard such great things about the university, particularly that it had great connections with industry and encouraged innovation. I'm extremely grateful to AUT – particularly Te Tari Takawaenga Māori and Te Ara Poutama, the Faculty of Māori and Indigenous Development – for their guidance in creating a space for me to connect with my taha Māori, and continue my journey into knowing who I am and where I come from."



Marijaan Tane

Ngāpuhi

Final-year student, Bachelor of Arts in Māori Development and Bachelor of Business in Market Insights: Marketing, Advertising, Retailing and Sales conjoint programme

Kāinga Ākonga

ACCOMMODATION

Living on campus can be a great option for students – they will only be minutes away from AUT and it's an easy way to meet other students.

AUT accommodation options

Wellesley Student Apartments City Campus (for 4–5 students)

- Three minutes' walk from AUT's main buildings
- Each apartment is fully furnished with four or five bedrooms, two bathrooms, a shared lounge/dining area and a kitchen
- There are three bedroom sizes to choose from and every bedroom has a king single bed, wardrobe, desk, chair, bookshelf and heated towel rail
- There are 13 bedrooms in the facility available for students with special access needs
- On-site services and facilities include staff who are available 24/7, outdoor spaces and laundry

Te Āhuru Mayoral Drive Student Accommodation City Campus (for 1 student)

- One-minute walk from AUT's main buildings
- Brand-new, purpose-built, high-spec studio units
- Each unit includes a king single bed, kitchenette with fridge and microwave, bathroom, study desk and chair, storage space
- There are 25 bedrooms (one on each floor) for students with special access needs
- On-site services and facilities include a recreation centre and sports court, 24/7 security, and shared study, social and dining spaces

Akoranga Student Village North Campus (for 4–5 students)

- Five minutes' walk from AUT's main buildings
- Each apartment is fully furnished with four or five bedrooms, two bathrooms, a shared lounge/dining area and a kitchen
- Some bedrooms have a double bed and some have a single bed
- All bedrooms have a wardrobe, desk, chair and bookshelf
- There are eight bedrooms in the facility available for students with special access needs (including bathrooms open to the person)
- On-site services and facilities include staff who are available 24/7, outdoor spaces and laundry

Residential life

AUT student accommodation runs a variety of social events every month from quizzes and baking challenges to exercise classes and bingo. During Orientation, students will be provided with a calendar of events for the year.

Our social events aim to be accessible to everyone, so students can expect a mix of virtual and in-person activities, for small groups and the full village.

When to apply for student accommodation

- Applications open on 1 August (for Semester 1 in the following year) or 1 May (for Semester 2)
- Online application – no references needed

More information

[aut.ac.nz/
accommodation](https://aut.ac.nz/accommodation)



Ngā akoranga

STUDY

Manga and kura

FACULTIES AND SCHOOLS

AUT is proud to be one of the world's best modern universities. Times Higher Education has ranked us in the top 40 universities under 50 years of age, and among the top 1% (201-250) of universities in the world. We have an overall five-star rating from university rankings organisation QS, in addition to five-star ratings for Teaching, Employability, Research, Internationalisation, Facilities, Innovation and Inclusiveness.

We have five faculties and 16 schools, delivering world-class education and research. Most AUT bachelor's degrees include some Māori courses or pathways, and all faculties have targeted academic support for taura Māori.

TE ARA POUTAMA FACULTY OF MĀORI AND INDIGENOUS DEVELOPMENT

Te Ara Poutama, the Faculty of Māori and Indigenous Development, aspires to lead AUT as a faculty of excellence and innovation in teaching, research, and scholarship relevant to the communities we serve. We celebrate the values and contribution of all peoples to the future advancement of Aotearoa New Zealand.

Our qualifications are at the cutting edge and have been developed in response to the need for skilled Māori professionals in the fast-growing Māori sectors of business and media. Our range of programmes gives students the tools not only to succeed in Māori development, history, Māori media and te reo Māori, but also in leadership, innovation and technology.

Our vision Takakawehia te ara poutama, kia whakareia koe ki ngā tohu o te mātauranga.

Traverse pathways of learning to acquire knowledge and wisdom.

Our goal is to:

- Promote Māori language and culture as relevant in local, national, and global environments
- Produce graduates who are culturally confident, competent and credible
- Provide qualifications consistent with best-practice teaching, curriculum and research that meet the needs of our students and our communities
- Offer an environment which is intellectually robust and physically, socially and culturally safe
- Demonstrate integrity, openness, commitment, passion, pride, professionalism, ambition and innovation in all our activities
- Act as an informed critic and conscience for the communities we serve
- Produce quality research and scholarship for the communities we serve
- Provide a safe environment to celebrate being Māori

In addition to the programmes offered at Te Ara Poutama, students could also include a major or minor in Māori Development, Māori Media or History, or a minor in Te Reo Māori as part of many other AUT degrees.

TE ARA PAKIHI, TE ŌHANGA ME TE TURE

FACULTY OF BUSINESS, ECONOMICS AND LAW

Te Kura Kaipakihi Business School

The Business School offers programmes that focus on accounting, business information systems, finance, human resource management and employment relations, international business, management and marketing. The school has been awarded the prestigious EQUIS and AACSB accreditations, putting it in the top 5% of business schools in the world. University rankings organisation QS also ranks it in the top 150 globally for accounting and finance, and top 250 for business management.

Te Kura Ture Law School

AUT's Law School offers the Bachelor of Laws degree and postgraduate programmes including the Bachelor of Laws (Honours), Master of Laws and Doctor of Philosophy degrees. The school is known for its distinctive legal education that enables students to make a positive impact on the world, and AUT law graduates are highly sought after by law firms, community organisations and other employers.

Matauranga Ōhanga School of Economics

The School of Economics offers programmes in micro and macroeconomics, econometrics, industrial organisation, economics, natural resources and society, growth and development economics, economics of labour and health policy, international trade economics, and international corporate finance. AUT is ranked in the world's top 350 universities for its economics and econometrics programmes.

TE ARA KETE ARONUI

FACULTY OF CULTURE AND SOCIETY

Te Kura Mātauranga School of Education

The School of Education delivers AUT's programmes in early childhood education, and primary and secondary teaching, as well as a wide range of postgraduate qualifications. Practical experience is at the heart of the education programmes, and as part of their degree students get real-life experience during their teaching placements in different schools.

Te Kura Taurimatanga me te Mahi Tāpoi School of Hospitality and Tourism

Ranked in the top 100 in the world, AUT's School of Hospitality and Tourism offers programmes in international hospitality and tourism management, event management, culinary arts and pâtisserie. The school is proud of its strong industry connections, and students can get experience in the on-campus training restaurants that are open to the public.

Te Kura Reo me te Ahurea School of Language and Culture

The School of Language and Culture teaches programmes that focus on language in its widest sense, with qualifications in creative writing, English and new media studies, international studies, Chinese, Japanese, interpreting, New Zealand Sign Language and language teaching. Programmes range from a wide range of undergraduate study options to postgraduate degrees.

Te Kura Pūtaiao ā-iwi me ngā Kaupapa Tūmatanui

School of Social Sciences and Public Policy
The inter-connected fields of social sciences and public policy come together in this school, with programmes in conflict resolution, criminology and criminal justice, psychology and social sciences. The school is ranked in the top 200 in the world by Times Higher Education, and students benefit from its close partnerships with community and not-for-profit organisations.

TE ARA AUAHA

FACULTY OF DESIGN AND CREATIVE TECHNOLOGIES

Te Kura Toi a Hoahoa School of Art and Design

AUT's School of Art and Design is ranked in the top 150 in the world by university rankings organisation QS, and offers bachelor's degrees in design and visual arts, as well as a range of postgraduate art and design programmes. Art and design students have access to industry-leading facilities, including a motion capture lab, printmaking and 3D labs, as well as digital textile machines.

Te Kura Whakapāho School of Communication Studies

Ranked in the top 150 in the world, the School of Communication Studies offers programmes focused on advertising creativity, digital media, journalism, public relations, radio and audio media, and screen productions. Students have access to industry-standard facilities, including world-class TV and radio studios, and could also work on live projects for real clients or do work experience with major industry organisations.

Te Kura Mātai Pūhanga, Rorohiko, Pāngarau School of Engineering, Computer and Mathematical Sciences

AUT's School of Engineering, Computer and Mathematical Sciences offers programmes in computer science, electrical and electronic engineering, information technology and software engineering, mathematical sciences and mechanical engineering. The school is widely known for its strong connections with industry organisations, and students have access to state-of-the-art technologies and world-class academic staff.

Huri te Ao School of Future Environments

The School of Future Environments delivers AUT's architecture and built environment programmes, which focus on design for future generations. It's also the home of the mixed-discipline creative technologies degrees. The school is a new associate member of the US-based Association of Collegiate Schools of Architecture (ACSA) and Association of Australasian Schools of Architecture (AASA).

TE ARA HAUORA A PŪTAIAO

FACULTY OF HEALTH AND ENVIRONMENTAL SCIENCES

Te Kura Mātai Haumanu School of Clinical Sciences

Ranked in the top 101-125 in the world for clinical, pre-clinical and health subjects by Times Higher Education and in the world's top 150 for nursing by university rankings organisation QS, AUT is one of the country's biggest health science education providers. The School of Clinical Sciences delivers programmes leading to professional registration in midwifery, nursing, oral health, podiatry, occupational therapy, physiotherapy and psychology. The school also offers New Zealand's only university degree in paramedicine.

School of Public Health and Interdisciplinary Studies

The School of Public Health and Interdisciplinary Studies' programmes cover the fields of psychotherapy and counselling, and public health. The school also delivers the interdisciplinary courses in the Faculty of Health and Environmental Sciences degree programmes. The school's public health programmes are ranked in the top 150 in the world by the Shanghai Ranking (Academic Ranking of World Universities); a prestigious university rankings organisation.

Te Kura Pūtaiao School of Science

Programmes in the School of Science have a focus on scientific innovation and include biomedical science, chemistry, environmental science and food science. Science students have access to outstanding labs and facilities, including the AUT Roche Diagnostics Laboratory. Field trips are a key part of the school's programmes, as are the strong partnerships with organisations like the Department of Conservation, Department of Primary Industries or New Zealand Antarctic Research Institute.

Te Kura Hākinakina School of Sport and Recreation

AUT is one of the world's best universities for sport science, ranked in the top 27 in the world by university rankings organisation QS and 39th globally by the Shanghai Ranking (Academic Ranking of World Universities). The school has strong industry connections across the sector and programmes cover health, physical education and coaching, physical activity, nutrition and the outdoors, sport and exercise science, and sport leadership and management.



**Associate Professor
Khylee Quince**

Te Roroa, Ngāpuhi and Ngāti Porou
Dean, AUT Law School

New Zealand's first dean of law who is Māori, Associate Professor Khylee Quince has an academic career spanning two decades. Her teaching expertise includes criminal law and justice, youth justice and Māori legal issues, and her research has largely focused on crime policy, law and legal studies, human rights, and justice issues. Throughout her academic career she has been involved in overseeing the academic and pastoral support for Māori and Pacific law students, and she has been recognised with a National Tertiary Teaching Excellence Award for Sustained Teaching.



Dr Dean Mahuta

Ngāti Mahuta, Waikato
**Senior Lecturer and Associate Director of
Te Ipukarea Research Institute**

Dr Dean Mahuta is a strong advocate for normalising te reo Māori through academic writing, the conducting of research and in academic publications. A jewel in Dean's career has been organising Te Puna o te Kī; the first and only biennial, open-subject conference held in te reo Māori. Since its inception in 2013, Te Puna o te Kī has provided a space for academics to present, publish, and discuss their research all in te reo Māori. Dean has also been appointed as one of two vision mātauranga advisors at AUT.



**Professor
Denise Wilson**

Ngāti Tahinga (Tainui)
**Professor of Māori Health,
Associate Dean Māori Advancement and Co-Director
of AUT Taupua Waiora Māori Research Centre**

Advocating for the improvement of health and social outcomes for whānau Māori has been a feature of Professor Denise Wilson's career. Initially qualified as a registered nurse, Denise is a fellow of the College of Nurses Aotearoa (New Zealand) and was inducted as a fellow into the American Academy of Nurses for her contributions to research and policy related to indigenous peoples and family violence. Her research focuses on Māori/indigenous family violence, health and health service engagement, cultural responsiveness and workforce development.



Hēmi Kelly

Ngāti Maniapoto, Ngāti Tahu–Ngāti Whāoa
Te Reo Māori Lecturer

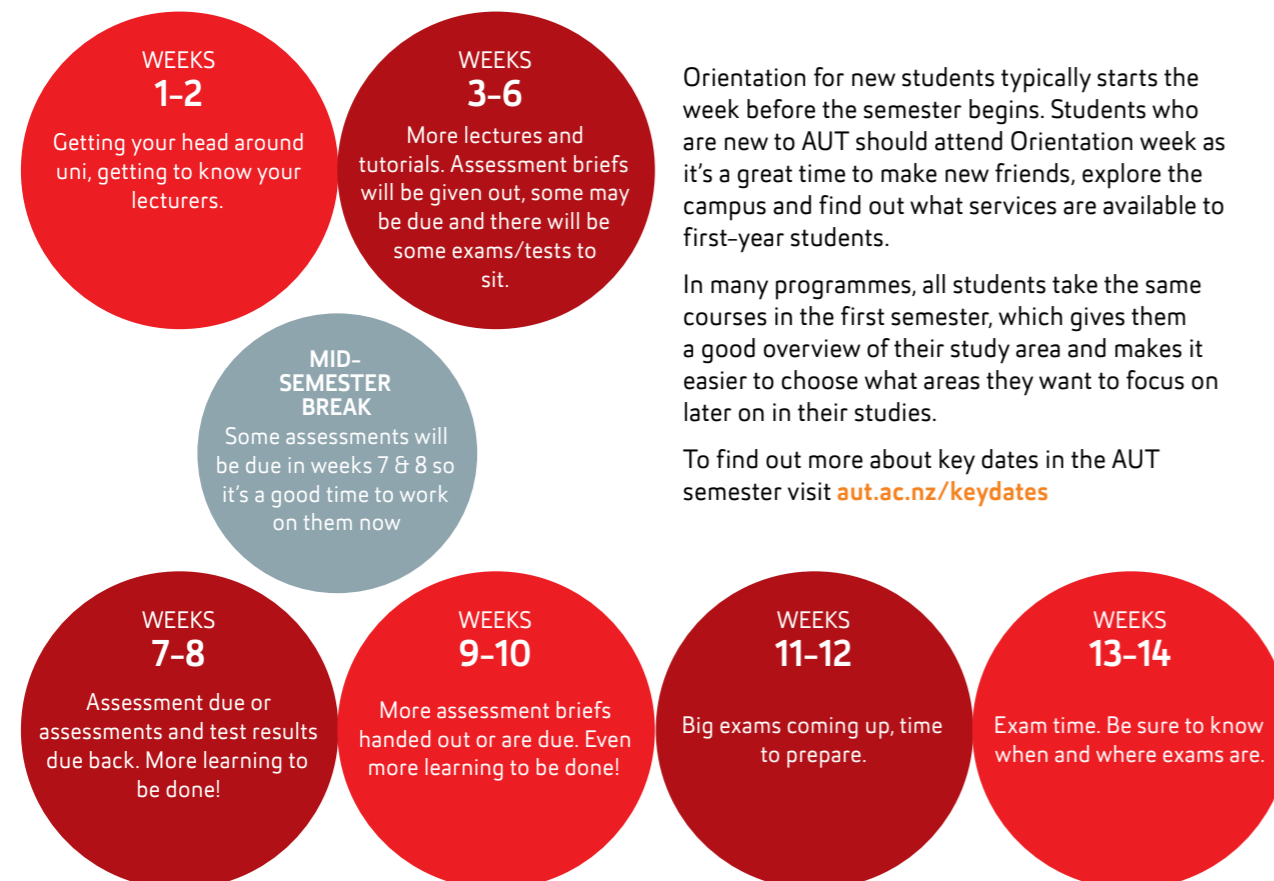
Passionate about helping to revitalise te reo Māori, Hēmi Kelly is a full-time lecturer in te reo Māori. His academic research and writing focus on Māori language teaching and acquisition, the revitalisation of the Māori language and translation studies. Hēmi is an author, a licensed translator and is involved in Māori language planning and revitalisation initiatives for a number of organisations, including his iwi communities. He even worked with popstar Lorde when she made her album Te Ao Mārama; a collection of her songs in te reo.

Te kaupeka tuatahi

THE FIRST SEMESTER

The university year has two semesters, with the first semester starting in late February and the second semester starting in mid-July.

Each semester runs for 12 weeks, with exams taking place in weeks 13 and 14.



Orientation for new students typically starts the week before the semester begins. Students who are new to AUT should attend Orientation week as it's a great time to make new friends, explore the campus and find out what services are available to first-year students.

In many programmes, all students take the same courses in the first semester, which gives them a good overview of their study area and makes it easier to choose what areas they want to focus on later on in their studies.

To find out more about key dates in the AUT semester visit aut.ac.nz/keydates



"The huge benefit of studying in AUT's Te Ara Poutama faculty, the Faculty of Māori and Indigenous Development, is that you can bring your Māoritanga with you. You don't have to leave any part of you at home. That's a huge advantage when you're studying at a Pākehā institution. When I first moved from my small town in the Hokianga to the big smoke of Tāmaki Makaurau, it was awesome, new and exciting. However, now the quietness of home, the dark nights and the peacefulness calls my name. I'd like to have a career that supports my hapū and iwi, whether it be hapū development, youth development or being the principal of the local primary school.

Sueann Wichman-Yukich

Ngāpuhi

3rd-year student, Bachelor of Arts in Māori Development

"I chose to study at AUT as I valued the support structures they had in place within health science, which allowed me to continue to stay close to my whānau. Throughout studying physiotherapy, I was fortunate to have had great role models and support systems that allowed me to be who I am. The staff and students I looked up to and who supported me epitomised the whakatauki, 'You must be the change that you want to see in the world'. I'll forever be grateful for the many mentors and friends I've met through being a part of the physiotherapy whānau at AUT. Their continued support, aroha and manaakitanga made it possible to succeed."



Te Hine-ngaro Tuterangiwhiu

Ngāpuhi, Taranaki Tūturu, Ngāti Porou, Ngāti Ranginui

Physiotherapist / Director, Uru Ora Limited

Bachelor of Health Science (Physiotherapy)



"To support future midwifery students, I became a tāura kaiwhatu in my second and third year at AUT, which gave me the opportunity to offer academic support to other students navigating their way through the programme. The leadership opportunities that AUT nourished have enabled me to become a confident and competent midwife. I'm now using these leadership skills in my current job as the area representative in Rotorua for the New Zealand College of Midwives, and as a midwife representative on the quality and safety board of the Lakes District Health Board. Being there to facilitate a pēpi coming into the world is always a special moment."

Maia Wharekura

Ngāti Kahungunu

Self-employed Lead Maternity Carer, Rotorua

Bachelor of Health Science (Midwifery)

"It was a massive undertaking moving from Gizzy to Tāmaki, yet I thoroughly enjoyed the independence the move to Auckland offered. I chose communication studies at AUT due to its practical elements and its scope; covering many different areas, including journalism, advertising and digital media. I loved my time studying at AUT, and as well as Auckland providing a unique living and social experience, it was great to be able to meet like-minded people who shared my interests. I have to give a big thanks to the McDonald's Te Tai Tokerau/Te Tai Rawhiti scholarship I received, as well as the Māori Liaison team at AUT."



Ryland Hutana

Ngāti Porou

Content Producer, Māori Television

Bachelor of Communication Studies in Digital Media

Tononga

APPLYING

Rārangi wā tononga

APPLICATION TIMELINE

This page gives you an idea of the different steps within the application process, and when they happen throughout the year.



MAY 2022 -
FEB 2023

Future student applies to AUT

Student receives acknowledgement email from AUT, confirming the application has been received



MAY 2022 -
FEB 2023

Future student receives AUT correspondence

They will receive one of the following for each programme they applied for:

Provisional offer of place

You have met some of the entry criteria to your chosen programme and we would like to offer you a provisional place to study at AUT. This essentially means that we're 'saving your spot' in the programme as long as you achieve certain requirements in your final exams/assessments (eg gaining University Entrance). If you don't meet the rest of the requirements then this offer will be withdrawn

Awaiting decision

Some popular programmes have limited places because of physical or other resource constraints, and rank applicants according to their academic achievement. Your UE results will be required before a final decision is made. High achieving applicants for popular programmes may be given a provisional offer

Decline/Referral

You don't meet the entry requirements or all places are taken. We may offer you an alternative programme (eg another bachelor's degree or a relevant certificate)



JAN 2023 -
FEB 2023

Future student's Year 13 results received

Students who previously received a provisional offer of place or are waiting for a decision will receive one of the following for each programme they applied for:

Confirmation of place

AUT will confirm your study for 2023

Decline/Referral

You don't meet the entry requirements or all places are taken. We may offer you an alternative programme (eg a relevant certificate)

In many programmes students can also start in Semester 2 (in July).

He tīwhiri tononga

TOP TIPS FOR APPLYING

To study at university, students need to meet the entry requirements for their chosen programme. For all bachelor's degrees, University Entrance (UE) is the minimum requirement all students need to meet. However, some programmes also have additional requirements, so it's important to check what is required for your chosen programme.

Check if a driver's license is required for your teen's chosen programme or if there are certain subjects needed or other requirements. Some AUT programmes – like the Bachelor of Engineering (Honours) – also use a rank score as part of their entry requirement process.

You can find what is required for your chosen programme in the relevant programme brochure or on the AUT website.

Apply early

It's best to apply before Term 4. That way, students can focus on their end of year exams without worrying about the university application process.

Email address

Email is our main form of communication. This is a good time for students to create a more professional sounding email address, rather than using their school email address.

Back up plans

Applying isn't committing anyone to anything, so it's always good to have a plan A, B and C. Students can apply for up to five different programmes at AUT.

How to apply

Students can apply online. To find out more about how to apply to AUT visit aut.ac.nz/apply

Hei whakamārama anō

FIND OUT MORE

Visit our website

For the latest information on AUT programmes and to keep up-to-date with what's happening at AUT visit aut.ac.nz

You can:

- Visit our Māori at AUT section – aut.ac.nz/about/maori – to learn more about AUT's Māori whānau
- Download programme guides for each study area, which cover course information, entry requirements, and student and alumni profiles
- Browse career sheets to get an understanding of the many career opportunities available
- Visit our parents' section for essential information to help whānau with the transition from school to university

AUT LIVE - the most open day

At the end of August each year, AUT LIVE showcases everything AUT has to offer to help you make an educated decision about university study. Hear our staff and students talk about what it's like study to study at AUT, and get to grips with the practicalities – including tuition costs, living expenses, learning experiences and so much more. To find out more, visit aut.ac.nz/live

Talk to an advisor

Our experienced and qualified team can help your teen plan their degree and provide all the information they need to get started. To book online course counselling visit aut.ac.nz/course-counselling. You can also call us on 0800 AUT AUT (0800 288 288) or email future@aut.ac.nz

Take a campus tour

If you're curious about AUT's fantastic facilities and would like to get a feel for the campus and accommodation environment, email future@aut.ac.nz to book a campus tour.

Email us

You can also get in touch by emailing maori@aut.ac.nz



Taku Manu Tāwhiowhio

**Kōrihi atu taku manu tāwhiowhio
Ki te tini, ki te mano o Hākuturi
Aku manu honenga
Aku manu whitirua**

My navigation bird cries out
To the multitudes
To the forest guardians
To the esteemed
To the gathered

**Ki te kai
Ki te inu i ngā wai o Horotiu
Whakatau iho rā
Ki te roro o te whare
Nanao atu ai**

Come and feast
Quench thy thirst in the waters of Horotiu
Come, rest
On the balcony of my meeting house
Grasp tightly

**Ki ngā here Pūrengi
Rangitāmiro ai te kōwhao o te ngira
Ka takakawehia te ara poutama
Pupū ake ake ngā wai o Waitematā
E tū atu ai Te Ipu a Mataaoho**

To the lashings
Where the common thread is found
Navigate the trails of learning
Waitematā continues to surge ahead
Mt Eden stands at guard

**Tū mai Rangipuke
Ka karanga ā-Hape
Whakawhiti atu ki te Rerenga Oraiti
Te Whatu tauranga kāwau tikitiki
Pou herenga waka**

Albert Park our fortress of contemplation
Hape calls out
To those who reside with us no more
There lies the anchor
Where we are indeed united

**Ko te reo pōwhiri!
Ko te reo karanga!
Ko te mātāpuna o te kete Aronui!
TAU, TAU, TAU ANA E!**

Tis a sign of salutation!
Tis a call of welcome!
Aronui, the fountain of knowledge
Come, rest.

This chant was composed by Dr Valance Smith (Assistant Pro-Vice Chancellor Māori Advancement) and Taituwha King (Senior Lecturer, Te Ara Poutama) in 2011. The chant was composed for Sir Paul Reeves, reflecting his enduring strength, dedication and commitment to Māori, Pākehā and to his faith in God. Sir Paul Reeves was known throughout Māoridom and indeed many parts of the world. He was not just a great man; but a man capable of doing amazing things amongst the people. He also stood as chancellor for Te Wānanga Aronui o Tāmaki Makaurau – the Auckland University of Technology for many years.



0800 AUT AUT (0800 288 288)

Auckland University of Technology
Auckland, New Zealand
aut.ac.nz

Enquire now
aut.ac.nz/enquire

CITY CAMPUS
55 Wellesley Street East, Auckland Central

NORTH CAMPUS
90 Akoranga Drive, Northcote, Auckland

SOUTH CAMPUS
640 Great South Road, Manukau, Auckland

Connect with us now:



@FutureStudentsofAUT