

# POSTGRADUATE GUIDE

2020

AUT

#1

MILLENNIAL  
UNIVERSITY  
IN AUSTRALASIA

#14

IN THE WORLD

#1

IN NEW ZEALAND  
FOR  
GLOBAL  
RESEARCH  
IMPACT

60+  
research  
centres and  
institutes with  
world-class  
experience



60+

AUCKLAND UNIVERSITY OF TECHNOLOGY, NEW ZEALAND

About AUT	02		
Architecture	10	Art & Design	14
		Business & Economics	18
Communication Studies	24	Creative Technologies	28
		Education	32
Engineering, Computer & Mathematical Sciences	36	Health Sciences	42
		Hospitality, Tourism & Events	48
Language & Culture	52	Law	56
		Māori & Indigenous Development	60
Science	64	Social Sciences & Public Policy	68
		Sport & Recreation	72
Applying to AUT	76		

**Disclaimer:** Although every reasonable effort is made to ensure accuracy, the information in this document is provided as a general guide only for students and is subject to change. All students enrolling at AUT should consult its official document, the AUT Calendar, which is available online at [aut.ac.nz/calendar](http://aut.ac.nz/calendar), to ensure that they are aware of, and comply with, all regulations, requirements and policies. The information contained in this publication was correct at the time of print, August 2019.

Cover: Top millennial university in Australasia & #1 global research impact (Times Higher Education World University Rankings 2019)

# Welcome message from the Vice-Chancellor

Auckland University of Technology (AUT) is New Zealand’s fastest growing postgraduate study destination. This is as a result of our focus on creating exceptional learning experiences bolstered by our innovative research collaborations with industry, business and governments.

As a postgraduate student, you will be part of our vibrant community, actively contribute to our research programmes and teams, enjoy a student experience in which creativity is nurtured and achievement celebrated, and gain world-class qualifications that will help you thrive in the international job market.

AUT has a rich institutional history stretching back more than 100 years and has been a university since 2000. We are contemporary, future thinking and responsive to the needs of our students and the world in which they choose to use their knowledge and expertise.

In 2018 AUT had 994 students enrolled in doctoral study and acknowledged 128 doctoral graduates at ceremonies during that year. We continue to have one of the largest total postgraduate enrolments of any university in New Zealand.

Providing a challenging, useful and accessible advanced education underpinned by relevant and applied research is at the core of AUT’s mission to create great graduates. You will have access to inspiring learning spaces and a network of support services, and work with top supervisors and lecturers at the forefront of their disciplines.

I hope this guide helps you explore the opportunities we offer at AUT, ranked in the top 1.2% of universities worldwide, and decide your next steps. I look forward to welcoming you to our university.

**Derek McCormack**  
Vice-Chancellor

Te whakatupu i te kōunga, i te mana taurite me ngā tikanga matatika, i ngā pūkenga ako, i ngā pūkenga whakaako me te āta rangahau hei hāpai i ngā hāpori whānui o te motu, otirā, o te ao.

To foster excellence, equity and ethics in learning, teaching, research and scholarship, and in so doing serve our regional, national and international communities.

★ ★ ★  
5  
OUT OF  
5  
★ ★ ★  
FOR  
ACADEMIC  
TEACHING



60+ research centres and  
institutes with world-  
class expertise



9 out of 10 students  
would recommend AUT  
as a great place to study



CHOOSE FROM OVER  
**150**  
POSTGRADUATE  
STUDY OPTIONS



**3+3**  
3 campuses &  
3 specialist facilities



**100,000+**  
alumni

# ONE OF THE WORLD'S BEST MODERN UNIVERSITIES

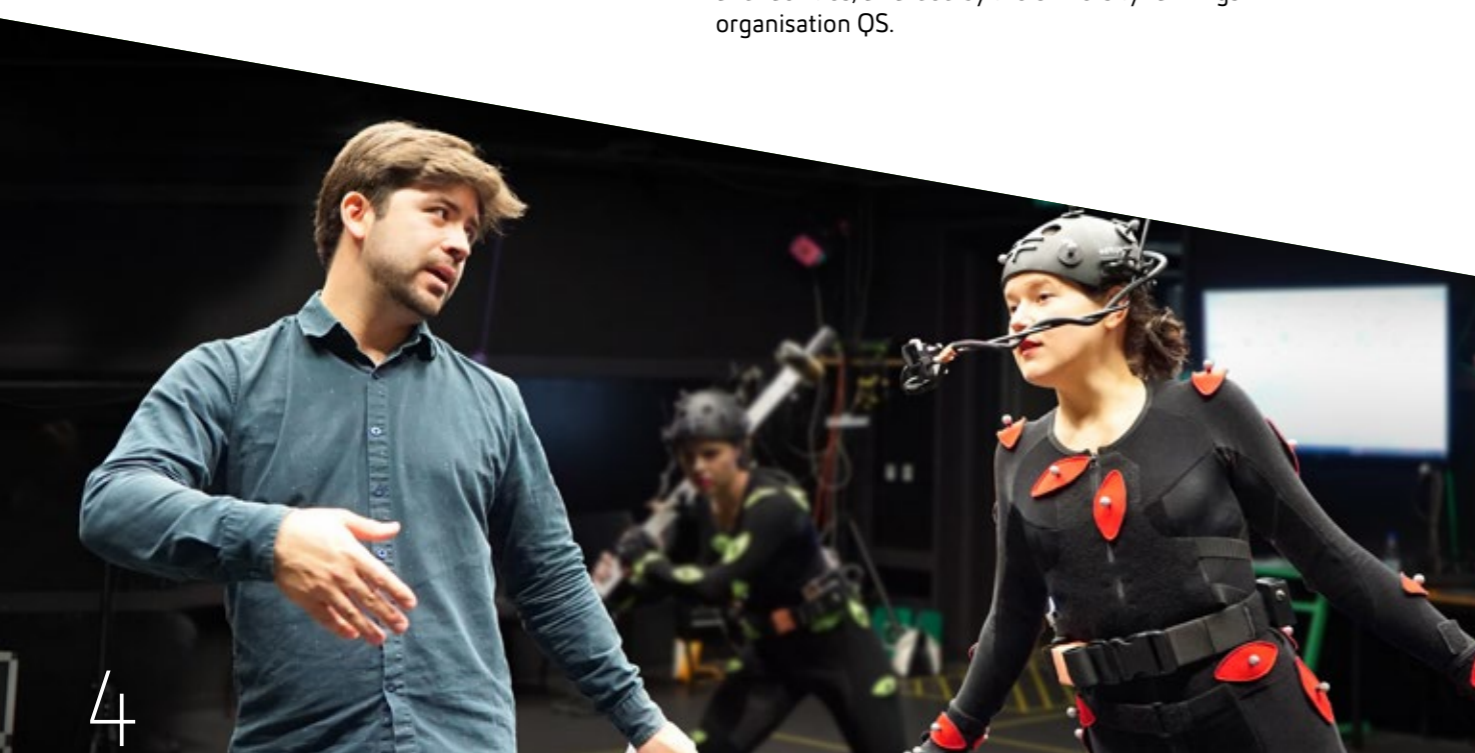


## Creating world-ready graduates

AUT's mission is to create great graduates, and each member of our staff contributes to this. We offer exceptional learning experiences that prepare students to be successful wherever in the world their career may take them. We encourage innovation and entrepreneurship, and the ability to explore new technologies, challenge routine thinking and solve problems in new ways. We embrace new technologies to lead the learning of tomorrow and prepare our students for the rapidly changing world. As a contemporary university we also place an emphasis on working across disciplines in our research, and teaching and learning. Thanks to our innovative teaching, excellent reputation and combination of theoretical and practical learning, AUT graduates are highly favoured by employers, with 95% of available graduates in paid employment within nine months of graduation.

## An innovative teaching and learning space

AUT's three modern campuses have several award-winning buildings which were created using sustainable principles and feature inviting, collaborative and functional learning areas, auditoriums and research spaces. This includes the state-of-the-art Engineering, Computer and Mathematical Sciences building, which has unique design features that mean it can be used as a teaching tool and 'living lab' where students can get hands-on experience. We also have a number of world-class facilities including one of only two motion capture studios in the country; New Zealand's top sports science facility, AUT Millennium; and the country's only two major radio telescopes, which are involved in projects with international research partners including NASA. AUT's success in creating transformational educational spaces has been recognised with a five-star ranking for teaching and facilities, awarded by the university rankings organisation QS.



## World-leading staff

Our academic staff are research-active and at the forefront of their disciplines. Many of them are internationally known as experts in their fields, and organisations around the world draw on their expertise for key projects. For example, Associate Professor Felicity Lamm was appointed as the Government's chief advisor for health and safety, and Professor Gail Pacheco's research is being used by the Government to address the gender pay gap. Professor Steve Henry was the first person in Australasia to secure a spot in the world-leading Johnson & Johnson Innovation JLABS in Houston to further his work on surface-modification technology Kode Technology, which has the potential to fight cancer. Associate Professor Barbara Bollard's innovative use of drones to monitor remote and unique ecosystems from Antarctica to Africa has caught the attention of scientists from NASA and the SETI Institute who recognise this approach could also help them find evidence of life on Mars.

## A global outlook

We know that to create truly great graduates, we must do more than get them ready for their career; we must get them ready for the world. We are consistently ranked first in New Zealand for international outlook by world rankings organisations QS and Times Higher Education. We have more than 5,000 industry partners around the world, and have collaborated on research projects with 140 different countries. Our students are from 140 different countries, and half of our academic staff were born overseas, and they often share their international experience and connections with their students.

## Innovative and relevant research

AUT is ranked first in New Zealand for global research impact (the number of times our research is cited by academics globally) by Times Higher Education and the US News Global Universities Rankings. We have more than 60 research centres and institutes delivering leading research – from space research to artificial intelligence and robotics, and ecology to physical activity and nutrition. AUT research addresses issues facing the environment and society, and our discoveries are widely used. Our research also feeds back into the classroom, and students can contribute to and learn from these research discoveries.

## World-class teaching and learning

We're proud to be one of the world's best modern universities – Times Higher Education has ranked us as the top millennial university in Australasia and number 14 in the world. We have been a university since 2000, and are now the second largest in the country and ranked among the top 1.2% (301-350) of universities in the world. Study with us and you can enrol in our range of world-ranked subjects, which include New Zealand's top-ranked health programmes and the country's best sport science school.

# LIFE AT AUT

**AUT is a modern and innovative university with endless opportunities and a supportive culture that celebrates diversity. Studying at AUT is your chance to meet new people and develop lifelong skills, while getting the support you need to succeed at university and beyond.**

We're proactive in enabling students to succeed, and our comprehensive student support services ensure that you have an amazing experience inside and outside the classroom and are prepared for any challenge in front of you.

## Easy to get help

At AUT, we don't want anything to get in the way of you enjoying your student experience and achieving your goals. So no matter what the problem, the Student Hub is here to help. You can find a Student Hub on each of our three campuses and our specialist staff can help with anything from enrolment and student ID cards to matters far beyond university like support with visa and immigration matters, StudyLink issues or landlord challenges.

## Helping you succeed in your studies

Our library and learning support team offers a wide range of services and resources, and there are digital resources available to develop your academic skills. The Library also runs a range of workshops to help you get the most out of your studies and work smarter, rather than harder. Our extensive peer mentoring programme also enables students to learn from others who have already completed the same paper.

## Support for postgraduate students

The Graduate Research School provides leadership and support services for postgraduate research students and their supervisors at AUT. We provide advice and information related to applications for the Master of Philosophy and doctoral programmes, offer advice on postgraduate policy matters, and monitor the progress of research students at AUT from the moment they're admitted to their programme to the time they complete their degree. Each faculty also has dedicated staff to support postgraduate students in all programmes throughout their studies.

## A vibrant research culture

We create a wide range of opportunities for supervisors and postgraduate research students to collaborate, connect and share ideas through workshops, events, doctoral inductions and the research students' peer groups. The annual Research Symposium and 3 Minute Thesis competition are among the many events that showcase AUT's student research culture and celebrate postgraduate student success.

# student hub

## Budget advice and financial support

Our specialist Student Hub advisors offer budget and financial planning advice all year. We know that sometimes things happen and financial stress can impact your academic success. That's why we offer financial support that ranges from offering grocery or fuel vouchers, to helping with that unexpected bill.

## Free access to digital tools and resources

We offer students all the digital tools needed to succeed, including free Wi-Fi on campus, the full Office 365 suite for up to five devices and access to lynda.com, a world-leading online learning platform.

## Plan your future career

The AUT Employability and Careers team helps you plan in advance for your future career by developing job search and interview skills, while building your personal brand and networking skills. We also support students into AUT Internz, an in-house service, that connects students with paid internships and employers looking to recruit AUT graduates.

## A launchpad for entrepreneurs

AUT is a great place for aspiring entrepreneurs. If you want to turn your entrepreneurial ideas into a viable business, you can join our nine-week CO.STARTERS@AUT programme or participate in the

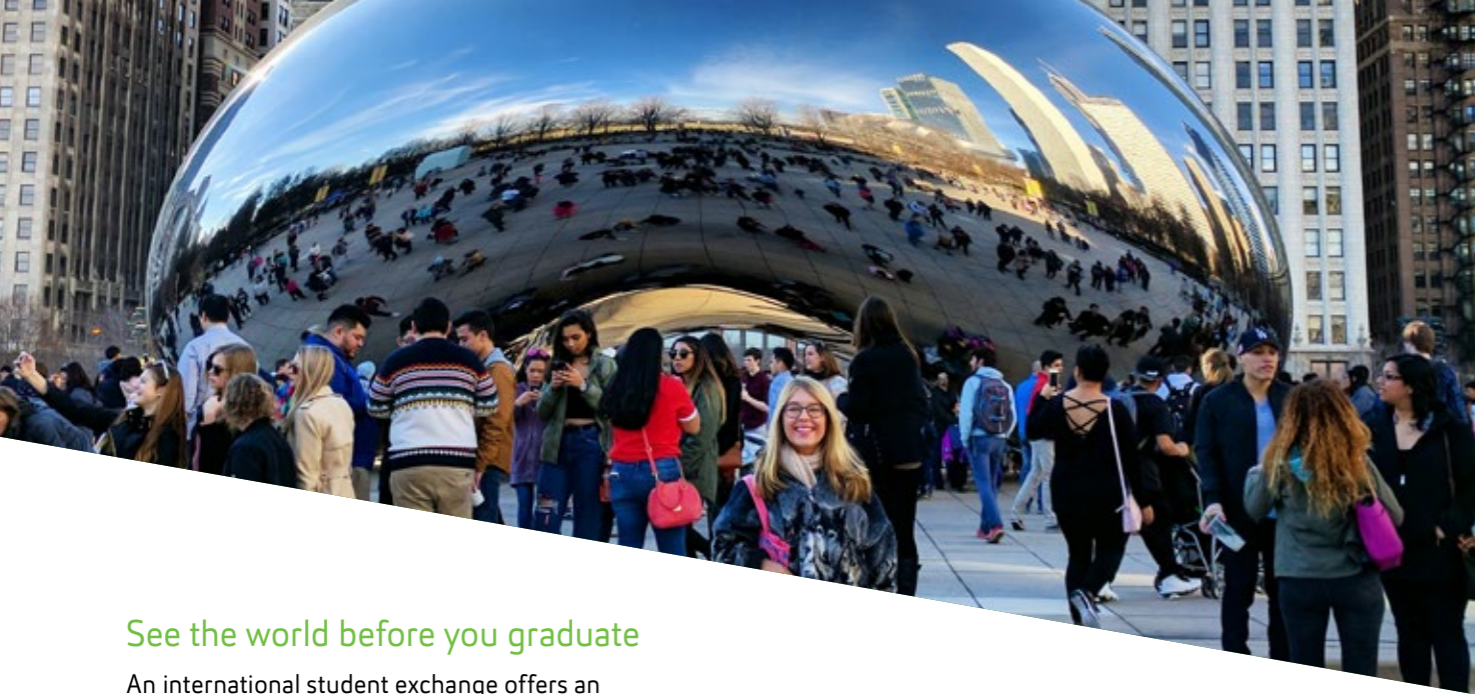
X Challenge to compete for a range of cash prizes to help you take the next step on your entrepreneurial journey. AUT students and alumni who have a promising idea for a start-up could also work with AUT Ventures Ltd to bring their ideas to market. We can help you access commercial funding sources, protect your intellectual property and avoid the pitfalls many start-ups face.

## Gain an edge on the competition

The AUT Edge Award and the Beyond AUT Award are designed to challenge, reward and formally acknowledge the 'C skills' – collaboration, co-operation, community, curiosity, communication and creativity – gained through your volunteering, leadership and employability activities. The awards help prove to employers that you're more than your qualification and give you an extra edge in the competitive marketplace.

## Top internships around the world

New AUT graduates have once-in-a-lifetime opportunities to apply their learning in a global context, thanks to the AUT Internz International Scholarship programme. As well as providing a chance to intern with amazing employers in a range of industries in America, Asia and Europe, AUT provides scholarships to cover visas, return travel, travel and health insurance and a stipend to support living expenses. More than 100 AUT graduates started their careers by completing internships for organisations like Facebook Creative Shop, Icebreaker, Allbirds, Lululemon, FCB, Paramount Recording Studios, Sundance Institute, the Metropolitan Museum of Art and The Smithsonian through the AUT Internz Scholarship Programme.



## See the world before you graduate

An international student exchange offers an amazing opportunity to study overseas as part of your degree. Study for a semester or a year at one of our partner universities around the world, and immerse yourself in another culture, make lifelong friends and get international experience before you graduate.

## We speak your language

Our students come from 140 countries, so we know that sometimes it's easier to have things explained in your native language. That's why many of our student ambassadors and Student Hub staff are multilingual and can clearly explain information if needed.

## Join a gym or sports team

AUT is New Zealand's leading sports university, with state-of-the-art sports facilities, on-campus gyms and a huge number of sports teams and events. As an AUT student you can participate in a wide variety of sports, from social on-campus games to elite international competitions. As a part of University Tertiary Sport (UTSNZ) you may also have the chance to represent AUT against some of the best student athletes in the country.

## Disability student support & resources

If you have an impairment, our Disability Support team can support you to participate as fully as you can in learning and student life. We work with students before they start at AUT to help identify their specific

needs and ensure they're set up for success while they're studying with us. AUT is strongly committed to equity of access and opportunity for students, staff and visitors, and supports the principles of Kia Ōrite: Code of Practice for an inclusive tertiary environment.

## Supporting parents

AUT has childcare centres at the City and the North Campus, providing a safe and happy environment with excellent staff and high-quality facilities. Full-time students may also qualify for financial support through our childcare subsidy.

## Get involved in campus life

Joining a club is a great way to meet like-minded people and make lifelong friends outside of lectures. Choose from a range of student-run social, sustainability, academic and cultural clubs – a great way to meet new people, participate in events and get involved in campus life.

## Committed to Māori advancement

We're passionate about the success of our Māori students. Our Takawaenga Māori, student advisors, co-ordinate activities and events, and provide advice on both personal and study topics.

## Pacific student success

AUT offers a range of services designed to support our diverse Pacific communities, including academic tutoring and a comprehensive mentoring and leadership programme.

## Join the AUT rainbow community

AUT was the first university to receive the Rainbow Tick, and remains committed to providing a safe and inclusive environment for all students. We offer services and resources for students who identify with diverse sexual orientations, sex and gender identities, including a rainbow student room where you can study and relax, and student groups and networks. We also have a dedicated rainbow community co-ordinator, and actively participate in many of the rainbow events in Auckland.

## Student ambassadors ready to help

AUT has more than 200 knowledgeable student ambassadors that help support events and activities across AUT. One of their key roles is to help new students as they settle into their studies.

## We embrace all faiths

We take a multi-faith approach by providing spiritual support to students from various beliefs. AUT encourages understanding, tolerance and harmony, respecting everyone's spiritual views.

## Stay healthy and well

At AUT it's OK to ask for help. We actively encourage all students to be aware of their own wellness needs – mind, body and spirit. You have access to free or low-cost medical treatment at our full-service medical centres, which provide private and confidential care for a range of issues. We're also committed to helping you build resilience, mental strength and the skills to manage stress. That's why all students can get free, confidential counselling sessions and mental health support. Talk to us about any topic – study-related or personal – or join a support group to help you with specific issues, like managing anxiety or going through relationship difficulties.

## Representing your interests

The AUT Student Association (AUTSA) exists to advocate and represent the interests of all students attending AUT. The association also publishes the university magazine Debate, and runs social activities during Orientation and throughout the year.

## Getting around

Whether it's finding your way to campus or getting around between lectures, AUT offers a range of resources to help you navigate your new environment. AUT has shuttle buses that travel between campuses (including New Zealand's first electric bus), delivers campus and city tours during Orientation, and provides MazeMaps online, a mapping tool designed to help navigate complex environments and highlight any obstacles for people with accessibility needs.

## Safe and friendly campuses

We make sure that our students are – and feel – safe, and our friendly security staff are available day and night to help if you have any concerns.

## Settling into university life

AUT helps students transition to university life by delivering a wide-ranging orientation programme at the start of each semester. AUT Orientation is complemented by a fun social programme. Orientation is just one aspect; we also offer activities throughout the semester, designed to equip all students with the skills to succeed in academic study, get around campus, access student support services and embrace university life.

# A

## ARCHITECTURE

As an architecture student you learn to design built environments that recognise indigenous values and address Auckland's rapid population growth, as well as global issues like housing affordability, global warming and homelessness. You'll be taught by professional architects, as well as professionals with backgrounds in design, engineering, computer science, creative technologies, media, business and entrepreneurship. You learn in an interactive environment where you collaborate with your classmates, mana whenua and experts from different disciplines to find innovative solutions that support community wellbeing and nurture future generations.



Draws upon global issues, indigenous worldviews and the need for sustainable design



Expert lecturers, nationally and internationally recognised in architecture, design, engineering and more



Students work on live, real industry briefs

POSTGRADUATE STUDY

Master of Architecture (Professional)	Master of Philosophy	Doctor of Philosophy
Prepare yourself for a career as a registered architect.	Focus on a particular area of interest with this research-only master's degree.	This degree is undertaken by research only and leads to advanced academic and theoretical knowledge in a specialist area.
Duration 2 years F/T, 5 years P/T	Duration 1 year F/T, 2 years P/T	Duration 3-6 years
Campus City	Campus City	Campus City
Starts 24 Feb & 13 July 2020	Starts Any time	Starts Any time

KEY  
F/T full-time  
P/T part-time

WORLD-LEADING RESEARCH

AUT researchers work on projects across the built environment, in New Zealand and around the world. Our Future Environments Research Network (FERN) is a great place to collaborate on projects, and work with graduates and architects to create meaningful change in the built environment. As an architecture student at AUT you can also access our brand-new Architectural Engineering lab where you can work on research projects that demonstrate the way architecture, design intelligence and future cities can become intertwined.



"I love AUT. I love the study environment and appreciate how approachable the staff are. I've also enjoyed the student life here, and have been involved in a number of different clubs. For my doctoral research, I'm focusing on acoustical engineering and how to make spaces more suitable acoustically for the building's purpose. When I decided to do my PhD, I researched a lot of different topics within the field of architectural engineering and this one stood out as an area where I can make a contribution through my research. I think it's a really interesting topic."

Megan Burfoot  
Doctor of Philosophy candidate



C

CITY  
CAMPUS

The AUT City Campus is in the heart of Auckland and is AUT's biggest campus. It's home to our architecture, art and design, business and economics, creative technologies, communications; engineering, computer and mathematical sciences; hospitality, languages, law, Māori development, science and social sciences programmes.

# A

## ART & DESIGN

AUT's School of Art and Design is ranked in the top 100 worldwide in the QS World University Subject Rankings 2019. Our postgraduate programmes cover a range of disciplines and are driven by an exceptional studio culture experience. Our world-class facilities include three galleries, a 3D lab, digital, photographic and moving image facilities (including a motion capture studio), and a textile and design lab. You'll be supervised by our expert academic staff and have the chance to work on national and international projects, often with real industry clients. Our programmes balance creativity, research and conceptual development with theoretical and professional studies.

RANKED  
TOP 100  
WORLDWIDE



Industry-leading  
studios, labs and  
technology



Award-winning,  
industry-experienced  
teaching staff

## POSTGRADUATE STUDY

**Postgraduate Certificate  
in Cultural and Creative  
Practice**

Choose from a range of papers, and explore ideas and concepts related to cultural expression.

**Duration** ½ year F/T,  
1–1½ years P/T  
**Campus** City  
**Starts** 24 Feb & 13 July 2020

**Master of Cultural and  
Creative Practice**

Mix live projects with coursework and develop your expertise in cultural expression. Includes an applied research project.

**Duration** 1½ years F/T,  
3 years P/T  
**Campus** City  
**Starts** 24 Feb & 13 July 2020

**Master of Design**

This research degree will develop your design expertise and empower your decision-making. Includes a thesis or a research project.

Pathways:

- Communication Design
- Digital Design
- Fashion Design
- Good Health Design
- Industrial Design
- Spatial Design
- Strategic Leadership in Design
- Textile Design

**Duration** 1½ years F/T,  
3 years P/T  
**Campus** City  
**Starts** 24 Feb & 13 July 2020

**KEY**

F/T full-time

P/T part-time

**Master of Visual Arts**

This interdisciplinary research degree is for visual art graduates and creative professionals. Includes a thesis.

**Duration** 1½ years F/T,  
3 years P/T  
**Campus** City  
**Starts** 24 Feb & 13 July 2020

**Master of Philosophy**

Focus on a particular area of interest with this research-only master's degree.

**Duration** 1 year F/T, 2 years P/T  
**Campus** City  
**Starts** Any time

**Doctor of Philosophy**

This degree is undertaken by research only and leads to advanced academic and theoretical knowledge in a specialist area.

**Duration** 3–6 years  
**Campus** City  
**Starts** Any time

**WORLD-CLASS FACILITIES**

Our creative-led research covers a broad range of art and design disciplines. Cultural practitioners – visual artists, spatial and fashion designers, film makers and more – come together to explore broad notions of art and design at AUT. As an art and design student you have access to our industry-leading studios, labs and services. These include photographic and lighting facilities; motion capture, printmaking and 3D labs; and digital textile machines at our world-class Textile and Design Lab. We're also the home of the ST PAUL St Gallery, a suite of purpose-built galleries and project spaces dedicated to the development of contemporary art and design through an international programme of exhibitions, events, symposia and publications.



"It's easy to see why AUT is ranked as one of the top art and design universities in the world. The academic staff will partner with the student to provide an objective perspective to find opportunities and prioritise any issues. After a critical analysis of the student's needs, academic staff will then provide top teaching, resources, advice, guidance and support. AUT has also provided me with opportunities beyond the academic. My achievements at AUT include winning the CO.STARTERS scholarship, completing the CO.STARTERS entrepreneurship programme and receiving the Entrepreneur of the Cohort \$2,000 Grand Prize, being selected for the Graduate Research School's Postgraduate Writing Retreat, and completing the AUT Edge Award, which helps students develop the skills employers are looking for."

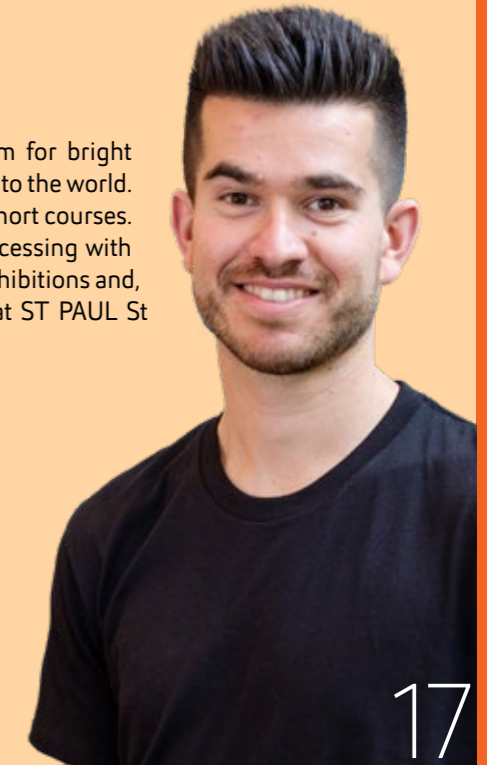
**Michelle Young**

Studio Mac Operator, Ogilvy  
Master of Design  
Bachelor of Design in Communication Design

"What I liked about studying at AUT is that it sets up the platform for bright students to apply themselves and develop opportunities to contribute to the world. AUT facilitated a number of exhibition openings, guest lectures and short courses. These led to the opportunity to learn analogue film making and processing with Solomon Nagler, support Ko Nakajima and Simon Morris with their exhibitions and, with my peers, contribute to putting on the exhibitions Assembly at ST PAUL St Gallery and The Lab as part of the 5th Auckland Triennial."

**Joe Prisk**

Artist / Front-End Developer, General Studios  
Master of Art and Design<sup>1</sup> with First Class Honours  
Bachelor of Visual Arts



1. The Master of Visual Arts has replaced the Master of Art and Design (Visual Arts)

# B

## BUSINESS & ECONOMICS

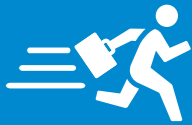
The AUT Business School and School of Economics are internationally ranked and accredited, and recognised for teaching and research that is transforming business and society. Our programmes are designed in collaboration with business leaders and experts, and integrate theory with current practice and global trends. As a business and economics student you'll learn from academic staff who are known as experts in their field, locally and internationally. Our alumni are ready to challenge routine thinking and put forward innovative solutions, and they're shaping successful careers all around the world.



Ranked in the top 300 universities worldwide for all our business and economics subjects



Transforming business and society through our research



Fast track your career with 1 year master's degrees

## POSTGRADUATE STUDY

**Bachelor of Business (Honours)**

Prepare yourself for higher-level careers or further study with this honours degree, which includes a dissertation.

Specialisations:

- Accounting
- Economics
- Finance
- Information Systems<sup>1</sup>
- International Business
- Management
- Marketing
- Sport Leadership and Management

**Duration** 1 year F/T, 2 years P/T

**Campus** City

**Starts** 24 Feb & 13 July 2020

**Postgraduate Certificate in Business**

Develop advanced level business skills, and prepare for further study in a specialisation in the Master of Business.

**Duration** ½ year F/T,  
1 year P/T

**Campus** City

**Starts** 24 Feb & 13 July 2020

**Postgraduate Diploma in Business**

Prepare yourself for further study in a specialisation in the Master of Business, and develop advanced level business skills.

**Duration** 1 year F/T, 2 years P/T

**Campus** City

**Starts** 24 Feb & 13 July 2020

**Master of Business**

Take your career to the next level with this research master's degree and research an area of your interest. Includes a thesis.

Specialisations:

- Accounting
- Economics
- Finance
- Information Systems<sup>1</sup>
- International Business
- Management
- Marketing
- Sport Leadership and Management

**Duration** 1½ years F/T,  
3 years P/T

**Campus** City

**Starts** 24 Feb & 13 July 2020

**Master of Philosophy**

Focus on a particular area of interest with this research-only master's degree.

**Duration** 1 year F/T, 2 years P/T

**Campus** City & South

**Starts** Any time

**Doctor of Philosophy**

This degree is undertaken by research only and leads to advanced academic and theoretical knowledge in a specialist area.

**Duration** 3-6 years

**Campus** City & South

**Starts** Any time

1. Name change subject to CUAP approval

**KEY**

F/T full-time

P/T part-time

**Postgraduate Certificate in Business Studies**

Develop a sound foundation in business studies, covering a range of papers and subjects. Prepares you for further study.

**Duration** 4 months F/T,  
8 months P/T

**Campus** City

**Starts** 2 Mar & 27 Oct 2020

**Postgraduate Certificate in Professional Accounting**

Ideal for students with a bachelor's degree in any field interested in a career in accounting. Can lead to further study in the Master of Professional Accounting.

**Duration** 4 months F/T,  
8 months P/T

**Campus** City

**Starts** 2 Mar & 27 Oct 2020

**Postgraduate Diploma in Professional Accounting**

Further your understanding of accounting from a strategic business perspective. Ideal for students with a bachelor's degree in any field interested in a career in accounting.

**Duration** 8 months F/T,  
16 months P/T

**Campus** City

**Starts** 2 Mar & 27 Oct 2020

**Master of Professional Accounting**

This professional master's degree will equip you with the skills to change careers and become an accountant.

**Duration** 16 months F/T,  
3 years P/T

**Campus** City

**Starts** 2 Mar & 27 Oct 2020

**Postgraduate Diploma in Applied Finance**

Develop an understanding of key finance principles and choose from a range of papers. Ideal for students with a bachelor's degree in any field interested in a career in finance.

**Duration** 8 months F/T,  
16 months P/T

**Campus** City

**Starts** 2 Mar & 27 Oct 2020

**Master of Applied Finance**

Select from a range of papers and gain skills for a wide range of financial fields. Ideal for students with a bachelor's degree in any field. Includes an applied project.

**Duration** 12-16 months F/T,  
2-4 years P/T

**Campus** City

**Starts** 2 Mar & 27 Oct 2020

**WORLD-LEADING RESEARCH**

We believe in high-quality research that addresses important societal challenges. Our world-class researchers work in all major disciplines in business and economics, and in our multidisciplinary research centres. At the heart of our research is collaborative engagement with our external stakeholders in business, the professions, government and the community.

Our research centres and groups include:

- Accounting for Social Impact Research Group
- Auckland Centre for Financial Research
- Centre for Occupational Health and Safety Research
- Gender and Diversity Research Group
- New Zealand Work Research Institute

"I had eight years' experience in the area of human resources, and could see that the Master of Business would enable me to marry my previous work experience with my desire to lay ground for doctoral research in this area in the future. AUT is a marvellous melting pot. It has students of different ages, abilities, ethnicities, backgrounds and worldviews. Peer learning is therefore fabulous, and the exchange of different ideas contributes to the overall learning process. Despite being new to New Zealand when I joined AUT, I felt at home from day one, and that speaks volumes of the spirit of inclusion that AUT stands for. AUT offered me plenty of opportunities to mingle with other students and academic staff, and create a support system for myself."

**Meghana Lama**

India

Human Resource Analyst, Auckland Transport  
Master of Business

### Postgraduate Diploma in Business Management

Ideal for students with a bachelor's degree in any field interested in a career in management. Choose from a wide range of management papers.

**Duration** 8 months F/T,  
16 months P/T

**Campus** City

**Starts** 2 Mar & 27 Oct 2020

### Postgraduate Diploma in Global Business

Develop an understanding of global business and cross-border activities. Ideal for students with a bachelor's degree in any field interested in a career in international business.

**Duration** 8 months F/T,  
16 months P/T

**Campus** City

**Starts** 2 Mar & 27 Oct 2020

### Postgraduate Diploma in Marketing

Become familiar with key marketing principles. Suitable for students with a bachelor's degree in any field interested in a career in marketing.

**Duration** 8 months F/T,  
16 months P/T

**Campus** City

**Starts** 2 Mar & 27 Oct 2020

### Master of Business Management

Gain the skills to become a manager. Ideal for students with a bachelor's degree in any field interested in management. Includes an applied project.

**Duration** 12-16 months F/T,  
2-4 years P/T

**Campus** City

**Starts** 2 Mar & 27 Oct 2020

### Master of Global Business

Develop the skills to understand global business. Ideal for students with a bachelor's degree in any field. Includes an applied project.

**Duration** 12-16 months F/T,  
2-4 years P/T

**Campus** City

**Starts** 2 Mar & 27 Oct 2020

### Master of Marketing

Ideal for students with a bachelor's degree in any field interested in studying marketing at master's level. Includes an applied project.

**Duration** 12-16 months F/T,  
2-4 years P/T

**Campus** City

**Starts** 2 Mar & 27 Oct 2020

### Postgraduate Certificate in Business Administration

Gain the skills to further your business career in as little as four months. Designed for aspiring business leaders, and can lead to further study in the MBA.

**Duration** 4-6 months F/T,  
8-16 months P/T

**Campus** City

**Starts** 6 Jan, 2 Mar, 28 Apr, 22 June, 17 Aug & 12 Oct 2020

### Postgraduate Diploma in Business Administration

Develop skills to further your business career or for further study in the MBA. Aimed at aspiring business leaders, with a wide selection of papers.

**Duration** 8-12 months F/T,  
16-32 months P/T

**Campus** City

**Starts** 6 Jan, 2 Mar, 28 Apr, 22 June, 17 Aug & 12 Oct 2020

### Master of Business Administration

Aimed at aspiring business leaders, the AUT MBA develops your leadership skills and is an invaluable tool to further your business career.

**Duration** 12-16 months F/T,  
2-4 years P/T

**Campus** City

**Starts** 6 Jan, 2 Mar, 28 Apr, 22 June, 17 Aug & 12 Oct 2020



"In my work at Google, I often use the critical thinking skills and the self-awareness I developed through my studies at AUT to understand my clients better and help them to grow their businesses in more meaningful ways. In my interview with Google they asked me to tell them who I was outside of the workplace. Before living in New Zealand, I wouldn't have known how to respond to this as my life was all about my work. My time in New Zealand allowed me to learn more about my personality and discover the things that give me fulfilment outside of the office."

**Nga Bui (Natalie)**

*Vietnam*

Industry Manager, Google Singapore, Singapore  
Postgraduate Diploma in Marketing

"I really felt that my lecturers and supervisors were invested in my development, and would go out of their way to provide any assistance, advice or opportunities they could. In the final year of my bachelor's degree, I had begun to read a lot of literature on laboratory experiments and incentives to promote charitable giving. The literature had identified donors that show 'irrational behaviour' when faced with essentially identical subsidies. For my Bachelor of Business (Honours) research I investigated if we could expand on this effect and further nudge participants to donate more using nonlinear subsidies for charitable giving against equivalent linear subsidies."

**Jordan Sanford**

Graduate Financial Risk Analyst, New Zealand Treasury  
Bachelor of Business (Honours) in Economics  
with First Class Honours  
Bachelor of Business in Economics and Finance



# C

## COMMUNICATION STUDIES

Ranked in the top 200 worldwide in the QS World University Subject Rankings 2019, communication studies at AUT prepares you for rewarding career options across many exciting industries. Our research-active academic staff are known as experts in communications and media studies, and our industry standard facilities include well-equipped TV and radio studios, sound and editing suites and a live news media centre. Study with us and you'll be equipped for the next evolution on the media horizon. It's one of many reasons why our alumni are highly-regarded around the world and regularly win media awards.



**TOP 200  
WORLDWIDE**

for communication  
and media studies



State-of-the-art  
radio studio



Cutting edge  
TV studios

## POSTGRADUATE STUDY

**Postgraduate Certificate in Communication Studies**

Explore a range of topics – from investigative journalism to screenwriting, and from digital media to public relations.

**Duration** ½ year F/T,  
1 year P/T  
**Campus** City  
**Starts** 24 Feb & 13 July 2020

**Postgraduate Diploma in Communication Studies**

Select papers that best suit your interests or choose a pathway in which you can develop your creative and professional practice.

Pathways:

- Digital Media
- Journalism
- Public Relations
- Screen Production

**Duration** 1 year F/T,  
2 years P/T  
**Campus** City  
**Starts** 24 Feb & 13 July 2020

**Master of Communication Studies**

Research an area of your interest in the field of communication studies. Your thesis could include a creative component – from a screenplay to digital media or a PR campaign.

**Duration** 1½ years F/T,  
3 years P/T  
**Campus** City  
**Starts** 24 Feb & 13 July 2020

**Master of Philosophy**

Focus on a particular area of interest with this research-only master's degree.

**Duration** 1 year F/T,  
2 years P/T  
**Campus** City  
**Starts** Any time

**Doctor of Philosophy**

This degree is undertaken by research only and leads to advanced academic and theoretical knowledge in a specialist area.

**Duration** 3–6 years  
**Campus** City  
**Starts** Any time

**KEY**

F/T full-time

P/T part-time

**WORLD-LEADING RESEARCH**

Our world-class researchers have expertise across the field of communication studies, including Asia-Pacific media, journalism, media performance, multimodal analysis; online, social and digital media; political economy of communication, popular culture, public relations and radio. We're committed to innovative, critical and creative research that advances knowledge, serves the community, and helps our students become future leaders in the communication and media industry.

Our research centres include:

- Centre for Performance Research
- Journalism, Media and Democracy Centre
- Multimodal Research Centre
- Pacific Media Centre
- Popular Culture Research Centre

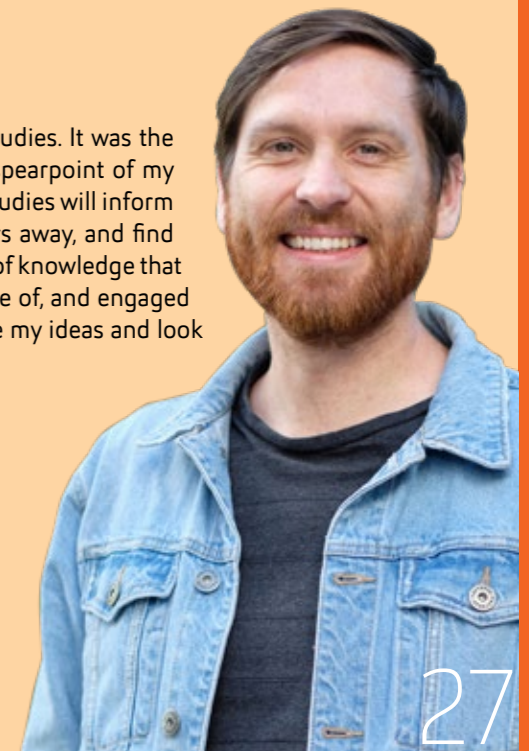


"The first thing I notice every day when I arrive at AUT is how many people of different races, cultures and backgrounds there are; all mingling together. I feel right at home. Everything you need is provided on campus, so make the most of it to make your AUT journey comfortable and enjoyable. There are so many excellent facilities for students and even for students' families. My partner and my children especially enjoy the comforts of the parents' room in the library. I can have them with me, and they work on their homework or watch a DVD until I'm done and we go home."

**Stephanie Tapungu**  
Papua New Guinea  
Doctor of Philosophy candidate

"In my mind, AUT is almost synonymous with communication studies. It was the logical choice if I want to be where the people who are at the spearpoint of my research are. I'm hoping the knowledge I'm gaining through my studies will inform whatever comes after. It's nice to return to study after nine years away, and find that my thoughts are valued and that there's an entire ecosystem of knowledge that can help me express them. The academic staff are knowledgeable of, and engaged with, the topics they discuss. I enjoy being encouraged to pursue my ideas and look to the research that has been done to expand on them."

**Ben Moore**  
Master of Communication Studies student



# C

## CREATIVE TECHNOLOGIES

See yourself as a creative entrepreneur? Study our postgraduate programmes in creative technologies to turn your creative ideas into reality. At AUT, you'll experiment with things like augmented reality, robotics, gaming development tools, e-textiles, electronics and sound engineering within a collaborative project-based studio environment. Your knowledge will be in demand within a wide range of cutting-edge industries. The world is changing fast, and people with imagination, advanced technological knowledge and entrepreneurial skills will be the ones to shape it.



Entrepreneurial  
focused  
degree structure



Mixed discipline  
degree



Access to high-  
tech labs network

## POSTGRADUATE STUDY

**Postgraduate Certificate in Creative Technologies<sup>1</sup>**

Interested in innovation and entrepreneurship? Explore how to bring creative ideas to life.

**Duration** ½ year F/T,  
1 year P/T

**Campus** City

**Starts** 24 Feb 2020

1. New programme, subject to CUAP approval

**KEY**

F/T full-time

P/T part-time

**Master of Creative Technologies**

Focused on entrepreneurship and innovation, this degree can help you turn your creative idea into reality. Includes a research project, often for industry.

**Duration** 1½ years F/T,  
3 years P/T

**Campus** City

**Starts** 24 Feb 2020

**Master of Philosophy**

Focus on a particular area of interest with this research-only master's degree.

**Duration** 1 year F/T,  
2 years P/T

**Campus** City

**Starts** Any time

**Doctor of Philosophy**

This degree is undertaken by research only and leads to advanced academic and theoretical knowledge in a specialist area.

**Duration** 3–6 years

**Campus** City

**Starts** Any time

**WORLD-CLASS FACILITIES**

Our world-class labs are hubs for sharing expertise and research outcomes, and include the 3D Lab, Mobile Innovation Network Australasia (MINA) Lab, Motion Capture Lab, PiGsty (Play Interactivity and Games) Lab, Sentience Lab and the Textile and Design Lab. We're proud of our strong partnerships with businesses and the community, and our researchers and postgraduate students often collaborate with industry organisations on research or other projects.



"No Six is a digital ecosystem that produces content and inspires young content creators in disadvantaged communities to find what they love and be inspired by their creations. We've been in operation for one year and our business is thriving. I would highly recommend studying creative technologies at AUT. The programmes challenge you to be both creative and critical, and the creative environment allows innovation to thrive. The academic staff are renowned for their expertise and industry connections – they're supportive of students and go the extra mile. As creative technologies is a relatively new area of study, there's also an opportunity to be innovative and stake a claim in this emerging field."

**Niko Meredith**

Co-director, No Six  
Master of Creative Technologies  
Bachelor of Creative Technologies



N

NORTH  
CAMPUS

The North Campus is home to our education, health sciences, and sport and recreation programmes. Just a short shuttle bus trip from our City Campus, the North Campus provides all the facilities you need for a successful university experience.

# E

## EDUCATION

Our postgraduate education programmes focus on preparing you for the challenges of future-focused education. Whether you're planning to become a teacher through our one-year Master of Teaching and Learning or want to advance your education career through one of our other postgraduate programmes, at AUT you'll find all the support, encouragement and inspiration you'll need to further your career in education. As a postgraduate and research student, you'll work in collaboration with academic staff who are internationally known as experts in the fields of pedagogy, education policy, e-learning and educational leadership.



Expert lecturers  
in specialist  
education  
disciplines and  
education research



Fast track your  
degree – one-year  
Master of Teaching  
and Learning  
(Primary)



Collaborative and  
interactive classes

## POSTGRADUATE STUDY

**Bachelor of Arts (Honours)**

Prepare yourself for higher-level careers or further study with this honours degree, which includes a dissertation.

Specialisation:  
• Education

**Duration** 1 year F/T,  
up to 2 years P/T  
**Campus** North & South  
**Starts** 24 Feb & 13 July 2020

**Postgraduate Certificate in Education**

Develop advanced knowledge and critical analysis skills in the field of education through our postgraduate level papers.

**Duration** ½ year F/T, 2 years P/T  
**Campus** North & South  
**Starts** 24 Feb & 13 July 2020

**Master of Education**

Develop advanced knowledge and understanding of education, and pursue an area of personal interest through research.

**Duration** 1½ years F/T,  
4 years P/T  
**Campus** North & South  
**Starts** 24 Feb & 13 July 2020

**Postgraduate Certificate in Educational Leadership**

Gain the skills for leadership roles in the education sector with this one-semester programme. Aimed at experienced education professionals.

**Duration** ½ year F/T, 2 years P/T  
**Campus** North & South  
**Starts** 24 Feb & 13 July 2020

**Master of Educational Leadership**

Gain the skills to be an outstanding leader in an educational environment. You have the option to include a research project. Aimed at experienced education professionals.

**Duration** 1½ years F/T,  
4 years P/T  
**Campus** North & South  
**Starts** 24 Feb & 13 July 2020

**Master of Teaching and Learning (Primary)**

Study this one-year professional qualification to become a teacher. Includes a teaching practicum.

**Duration** 1 year F/T,  
up to 3 years P/T  
**Campus** North  
**Starts** 13 Jan 2020

**Postgraduate Certificate in Higher Education**

Already working in higher education? Complete the Postgraduate Certificate in Higher Education.

**Duration** 2 years P/T  
**Campus** North  
**Starts** Early Feb & July 2020

**Postgraduate Diploma in Higher Education**

Explore teaching and learning and other aspects influencing higher education. Designed for professionals in the higher education sector.

**Duration** 3–4 years P/T  
**Campus** North  
**Starts** Early Feb & July 2020

**Master of Philosophy**

Focus on a particular area of interest with this research-only master's degree.

**Duration** 1 year F/T, 2 years P/T  
**Campus** North  
**Starts** Any time

**Doctor of Philosophy**

This degree is undertaken by research only and leads to advanced academic and theoretical knowledge in a specialist area.

**Duration** 3–6 years  
**Campus** North  
**Starts** Any time

**KEY**

F/T full-time P/T part-time

**WORLD-LEADING RESEARCH**

At AUT's School of Education, we believe in high-quality research that has impact, and have world-class researchers and research strengths across education. Our research-active staff are widely known for their expertise in all areas of the education sector – from education policy, the changing nature of public education and mindfulness for teachers, to educational leadership and leadership development, equity culture and diversity, and the philosophy of education.

"The Master of Educational Leadership was strongly recommended by a friend. She spoke highly of the programme content, learning environment and the lecturers at AUT, calling the programme 'a transformative education opportunity to learn about leadership for the 21st century'. The opportunity to mix with others with a passion for education was an exciting journey, and I loved meeting other educators outside my school community. I'm continuously sharing my learning, research and ideas with my colleagues, and I have applied my newly learnt leadership theories to my roles of dean, teacher and Board of Trustees representative."

**Cushla Shepherd**

Year 8 Teacher / Lower Middle School Dean, Orewa College  
Master of Educational Leadership





ENGINEERING,  
COMPUTER &  
MATHEMATICAL  
SCIENCES

Study engineering, computing or mathematical sciences and play a leading role in the technological, social and economic development of the world today. Our teaching and research staff are among the best in New Zealand and internationally. Our postgraduate computing, mathematics and engineering programmes have the highest standards in student experience, and our alumni are highly sought-after by employers around the world. With access to outstanding facilities you'll be equipped to make industry-leading discoveries in collaboration with classmates, research staff and partner organisations.



21 internationally  
recognised research  
centres



5 out of 5 rated  
'Excellent' for our IT  
infrastructure



State-of-the-art  
Engineering,  
Computer and  
Mathematical  
Sciences building

## POSTGRADUATE STUDY

**Postgraduate Certificate in Computer and Information Sciences**

Explore the latest thinking and developments in computer and information sciences, and choose from a wide range of papers.

**Duration** ½ year F/T, 1 year P/T  
**Campus** City  
**Starts** 24 Feb & 13 July 2020

**Postgraduate Diploma in Computer and Information Sciences**

Choose from a variety of papers, and stay up-to-date with the latest developments in computer and information sciences.

**Duration** 1 year F/T, 2 years P/T  
**Campus** City  
**Starts** 24 Feb & 13 July 2020

**Master of Computer and Information Sciences**

Explore the latest developments – from artificial intelligence to information systems and software systems engineering. Includes a thesis or research project.

**Duration** 1½ years F/T, 3 years P/T  
**Campus** City  
**Starts** 24 Feb & 13 July 2020

**Bachelor of Science (Honours)**

Prepare yourself for higher-level careers or further postgraduate study with this honours degree, which includes a dissertation.

**Duration** 1 year F/T, 2 years P/T  
**Campus** City  
**Starts** 24 Feb 2020

**Postgraduate Certificate in Science**

Broaden your knowledge of computer and mathematical sciences, and select from our wide range of postgraduate papers.

**Duration** ½ year F/T, 1 year P/T  
**Campus** City  
**Starts** 24 Feb & 13 July 2020

**Postgraduate Diploma in Science**

Advance your understanding of computer and mathematical sciences in as little as one year. Choose from a wide range of papers.

**Duration** 1 year F/T, 2 years P/T  
**Campus** City  
**Starts** 24 Feb & 13 July 2020

**Master of Science**

Within this 180-point programme you'll undertake a research project in an area of computer and mathematical sciences, supervised by our expert staff.

**Duration** 1 year F/T, 2 years P/T  
**Campus** City  
**Starts** 24 Feb & 13 July 2020

**Master of Analytics**

Develop advanced analytics and database skills as well as an understanding of the latest theory, tools and techniques. Includes a research project.

**Duration** 1½ years F/T, 3 years P/T  
**Campus** City  
**Starts** 24 Feb & 13 July 2020

**Master of Information Security and Digital Forensics**

This programme addresses the need for professionals in the field of the security of computer systems and networks. Includes a thesis or a research project.

**Duration** 1½ years F/T, 3 years P/T  
**Campus** City  
**Starts** 24 Feb & 13 July 2020

**Postgraduate Certificate in Engineering**

Take your career to the next level and explore the latest developments in engineering through our range of postgraduate papers.

**Duration** ½ year F/T, 1 year P/T  
**Campus** City  
**Starts** 24 Feb & 13 July 2020

**Postgraduate Diploma in Engineering**

Explore the latest trends in engineering and advance your engineering knowledge with our selection of postgraduate papers.

**Duration** 1 year F/T, 2 years P/T  
**Campus** City  
**Starts** 24 Feb & 13 July 2020

**Master of Engineering**

Investigate the latest developments in the field of engineering. Includes either a thesis or a research project in engineering.

**Duration** 1-1½ years F/T, 2-3 years P/T  
**Campus** City  
**Starts** 24 Feb & 13 July 2020

**Master of Construction Management**

Further your knowledge of how to manage complex construction projects. Aimed at construction professionals.

**Duration** 1 year F/T, 2 years P/T  
**Campus** City  
**Starts** 24 Feb & 13 July 2020

**Master of Engineering Project Management**

Advance your project management skills and further your career as an engineering professional.

**Duration** 1 year F/T, 2 years P/T  
**Campus** City  
**Starts** 24 Feb & 13 July 2020

**Master of IT Project Management**

Gain the skills to design, implement and manage software development projects throughout their life cycle.

**Duration** 1 year F/T, 2-3 years P/T  
**Campus** City  
**Starts** 24 Feb & 13 July 2020

**Master of Philosophy**

Focus on a particular area of interest with this research-only master's degree.

**Duration** 1 year F/T, 2 years P/T  
**Campus** City & South  
**Starts** Any time

**Doctor of Philosophy**

This degree is undertaken by research only and leads to advanced academic and theoretical knowledge in a specialist area.

**Duration** 3-6 years  
**Campus** City & South  
**Starts** Any time

**KEY**

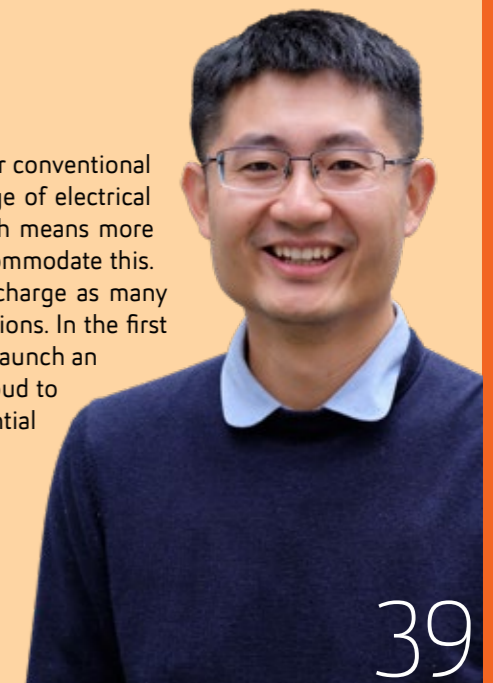
F/T full-time P/T part-time

"There's a growing interest in electrical vehicles as a replacement for conventional internal combustion engine vehicles. However, the increasing usage of electrical vehicles may result in congestion in electricity consumption, which means more investment needs to be made to upgrade our power system to accommodate this. My research aims to develop a smart charging strategy that can charge as many electrical vehicles as possible without violating the system's restrictions. In the first year of my PhD, AUT became the first university in New Zealand to launch an electric bus, travelling between the different campuses. I was so proud to have the chance to participate in this project, and research the potential impact of electric buses on the electricity grid."

**Jun Su**

China

Doctor of Philosophy candidate



## WORLD-LEADING RESEARCH

Research is our strength, and we have a strong focus on research in collaboration with our many industry partners. Our research expertise ranges from artificial intelligence to astronomy, and from robotics and mechatronics to power and energy engineering. As a postgraduate student, you'll learn from globally renowned academic staff and have access to our world-class research institutes and facilities.

Our research centres, groups and initiatives include:

- Architectural Engineering Lab
- Artificial Intelligence Initiative
- AUT Radiofrequency Identification Applications Laboratory
- BioDesign Lab
- Built Environment Engineering
- Centre for Advanced Manufacturing Technology
- Centre for Artificial Intelligence Research
- Centre for Kode Technology Innovation
- Centre for Robotics and Vision
- Centre for Signals and Systems
- Data Science Research Group
- Disaster eHealth Community of Interest
- Engineering Research Institute
- High Performance Computing Research Laboratory
- Industrial Information and Control Centre
- Institute of Biomedical Technologies
- Institute for Radio Astronomy and Space Research
- Knowledge Engineering and Discovery Research Institute
- Mathematical Sciences Research Group
- Network and Security Research Group
- Science, Technology, Engineering and Mathematics Tertiary Education Centre
- Software Engineering Research Laboratory
- Telemetrics Research Centre
- Tribology and Surface Engineering Laboratory
- Wireless InnovationS in Engineering (WISE) Research Group



"What I like about the Master of Construction Management is that it focuses on the actual construction environment, not only in New Zealand but around the world. I would definitely recommend this degree to other professionals in my industry because it will enhance your skills and help you develop your career in a better way.

AUT focuses on preparing students for careers that could influence not only the local environment but also global society. Additionally, the university environment is designed to cater to the different needs of students, with good spaces and technology to support the study process."

**Alexandra Arenilla Cuervo**

*Colombia*

**Master of Construction Management student**



# S

**SOUTH  
CAMPUS**

AUT South Campus is a vibrant and growing campus located in the heart of Manukau. We offer a wide range of programmes at all levels of study with the convenience of a campus located close to home.



HEALTH SCIENCES

AUT is one of the biggest health science education providers in New Zealand. We draw on research and industry practice to prepare you for a rewarding career in this growing sector, and our graduates are in demand around the world. Times Higher Education ranks us first in New Zealand for health subjects and the Academic Ranking of World Universities ranks us in the top 200 in the world for nursing and public health. Our academic staff and postgraduate students often conduct ground-breaking research to improve our understanding of health and environmental issues, generate new products and technologies, and enhance policy making and professional practice.



#1

IN NEW ZEALAND  
FOR  
**HEALTH  
SUBJECTS**



NZ's fastest  
growing and most  
diverse health  
educator



Our health app ranked  
#1 in NZ. Now we are  
creating the world's  
largest health survey

## POSTGRADUATE STUDY

**Bachelor of Health Science (Honours)**

Prepare yourself for higher-level careers or further study with this honours degree, which includes a dissertation.

**Duration** 1 year F/T, 3 years P/T  
**Campus** North  
**Starts** 24 Feb 2020

**Postgraduate Certificate in Health Science**

Gain advanced knowledge and critical analysis skills in the field of health sciences. Choose from a wide range of papers.

Specialisations:

- Acupuncture <sup>Ⓝ</sup>
- Child Health <sup>Ⓝ</sup> <sup>Ⓢ</sup>
- Critical Care Paramedicine <sup>Ⓢ</sup>
- Health Care Ethics <sup>Ⓢ</sup> <sup>Ⓢ</sup>
- Health Professional Education <sup>Ⓝ</sup>
- Leadership and Management <sup>Ⓝ</sup>
- Māori Health <sup>Ⓢ</sup> <sup>Ⓢ</sup> <sup>1</sup>
- Mental Health and Addictions <sup>Ⓝ</sup>
- Midwifery <sup>Ⓢ</sup>
- Older Adult: Health & Wellness <sup>Ⓝ</sup>
- Physical Activity and Nutrition <sup>Ⓢ</sup>
- Podiatry <sup>Ⓝ</sup>
- Rehabilitation <sup>Ⓝ</sup>
- Resuscitation <sup>Ⓢ</sup>
- Violence and Trauma Studies <sup>Ⓝ</sup>

**Duration** ½ year F/T, up to 2 years P/T  
**Campus** North & South  
**Starts** 24 Feb & 13 July 2020

**Postgraduate Certificate in Advanced Nursing Practice**

Develop a specialty nursing area and further your knowledge, skills and practice with our range of advanced nursing papers.

**Duration** ½ year F/T, up to 2 years P/T  
**Campus** North  
**Starts** 24 Feb & 13 July 2020

**Postgraduate Diploma in Registered Nurse Prescribing**

Relevant for registered nurses working in primary health and specialty teams where registered nurse prescribing could safely improve access to healthcare.

**Duration** 1 year F/T, 3 years P/T  
**Campus** North  
**Starts** 24 Feb & 13 July 2020

**Postgraduate Diploma in Health Science**

Gain advanced knowledge and critical analysis skills in the field of health sciences. Select from our wide range of papers.

Specialisations:

- Acupuncture <sup>Ⓝ</sup>
- Advanced Nursing Practice <sup>Ⓝ</sup>
- Child Health <sup>Ⓝ</sup> <sup>Ⓢ</sup>
- Health Care Ethics <sup>Ⓢ</sup> <sup>Ⓢ</sup>
- Health Professional Education <sup>Ⓝ</sup>
- Leadership and Management <sup>Ⓝ</sup>
- Māori Health <sup>Ⓢ</sup> <sup>Ⓢ</sup> <sup>1</sup>
- Mental Health and Addictions <sup>Ⓝ</sup>
- Midwifery <sup>Ⓢ</sup>
- Musculoskeletal Physiotherapy <sup>Ⓝ</sup>
- Older Adult: Health & Wellness <sup>Ⓝ</sup>
- Paramedicine <sup>Ⓢ</sup>
- Physical Activity and Nutrition <sup>Ⓢ</sup>
- Podiatry <sup>Ⓝ</sup>
- Rehabilitation <sup>Ⓝ</sup>
- Violence and Trauma Studies <sup>Ⓝ</sup>

**Duration** 1 year F/T, up to 3 years P/T  
**Campus** North & South  
**Starts** 24 Feb & 13 July 2020

**Master of Health Practice**

Ideal for health professionals who want to extend their practical knowledge and further their career. Includes a practice project.

Specialisations:

- Acupuncture <sup>Ⓝ</sup>
- Child Health <sup>Ⓝ</sup> <sup>Ⓢ</sup>
- Māori Health <sup>Ⓢ</sup> <sup>Ⓢ</sup> <sup>1</sup>
- Mental Health and Addictions <sup>Ⓝ</sup>
- Midwifery <sup>Ⓢ</sup>
- Musculoskeletal Physiotherapy <sup>Ⓝ</sup>
- Nursing <sup>Ⓝ</sup>
- Paramedicine <sup>Ⓢ</sup>
- Podiatry <sup>Ⓝ</sup>
- Psychotherapy Practice <sup>Ⓝ</sup>
- Rehabilitation <sup>Ⓝ</sup>
- Violence and Trauma Studies <sup>Ⓝ</sup>

**Duration** 1½ years F/T, up to 4 years P/T  
**Campus** North & South  
**Starts** 24 Feb & 13 July 2020

**Master of Health Science**

Further your knowledge and advance your career through research in an area of your interest. Includes a thesis.

Specialisations:

- Advanced Nursing Practice
- Podiatry
- Psychology
- Non-endorsed

**Duration** 2 years F/T, up to 5 years P/T  
**Campus** North  
**Starts** 24 Feb & 13 July 2020

**Master of Nursing Science**

Offers bachelor's degree graduates the opportunity to qualify as a registered nurse through a conversion master's degree.

**Duration** 2 years F/T only  
**Campus** South  
**Starts** 3 Feb 2020

**Postgraduate Diploma in Counselling Psychology**

Gain the skills for a career as a counselling psychologist, and work towards registration as a psychologist. Follows on from the Master of Health Science in Psychology.

**Duration** 1 year F/T only  
**Campus** North  
**Starts** 24 Feb 2020

**Postgraduate Diploma in Rehabilitation Psychology**

Develop skills to work with people recovering from illness or injury, and work towards registration as a psychologist. Follows on from the Master of Health Science in Psychology.

**Duration** 1 year F/T only  
**Campus** North  
**Starts** 24 Feb 2020

1. May also be offered via distance learning.

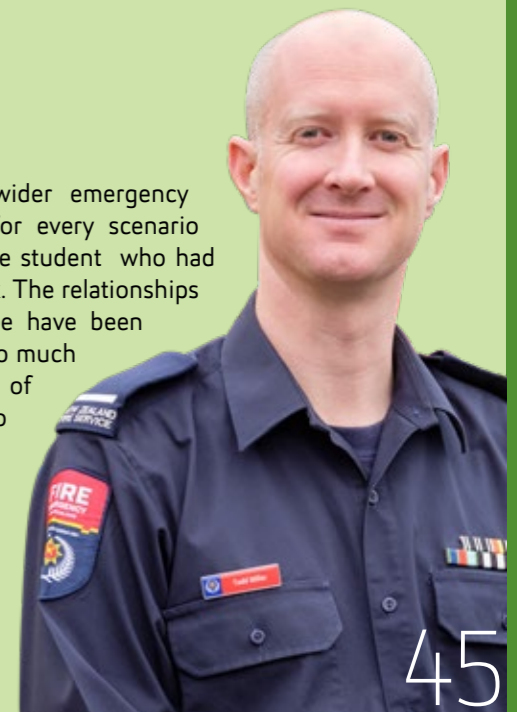
## KEY

- Ⓢ City Campus    F/T full-time  
 Ⓝ North Campus    P/T part-time  
 Ⓢ South Campus

Practice as a health professional in New Zealand is governed by legislation and a number of 'Responsible Authorities' (such as the Physiotherapy Board and the Nursing Council who register practitioners). Overseas qualified health professionals who wish to practise in New Zealand should communicate directly with the relevant Responsible Authority. Qualifications recognised for professional registration at AUT are undergraduate; study at postgraduate level is not considered equivalent recognition for NZ Board certification.

"I've enjoyed meeting like-minded professionals from the wider emergency management sector that I may never have met otherwise. For every scenario we discussed in our block courses there was always at least one student who had experienced that particular scenario to some degree in their work. The relationships and collaboration enabled by undertaking this master's degree have been priceless. The support from the lecturers has made the journey so much more enjoyable. Each paper was able to be tailored to my areas of interest, producing usable data that I could immediately apply to my work."

**Todd Miller**  
 Firefighter, Fire and Emergency New Zealand  
 Master of Emergency Management



**Master of Psychotherapy**

This programme is for beginning psychotherapists or students who want to become psychotherapists.

**Duration** 2 years F/T,  
up to 4 years P/T  
**Campus** North  
**Starts** 24 Feb 2020

**Postgraduate Certificate in  
Emergency Management**

Study papers related to disaster resilience, risk reduction, emergency risk communication, response and leadership in emergency.

**Duration** ½ year F/T,  
up to 2 years P/T  
**Campus** South  
**Starts** 24 Feb & 13 July 2020

**Postgraduate Diploma in  
Emergency Management**

Further your understanding of issues related to emergency and disaster management, and choose from a wide range of papers.

**Duration** 1 year F/T,  
up to 3 years P/T  
**Campus** South  
**Starts** 24 Feb & 13 July 2020

**Master of Emergency  
Management**

Develop the skills to play a leading role in the field of emergency and disaster management. Includes a dissertation or a practice project.

**Duration** 1½ years F/T,  
4 years P/T  
**Campus** South  
**Starts** 24 Feb & 13 July 2020

**Postgraduate Certificate in  
Public Health**

Choose from a wide range of papers related to public health management and policy, disease control and health promotion.

**Duration** ½ year F/T,  
up to 2 years P/T  
**Campus** South  
**Starts** 24 Feb 2020

**Postgraduate Diploma in  
Public Health**

Build your understanding of key elements of public health, with an emphasis on community health and development.

**Duration** 1 year F/T,  
up to 3 years P/T  
**Campus** South  
**Starts** 24 Feb & 13 July 2020

**Master of Public Health**

Gain the skills to contribute to public health management and policy, disease control and health promotion. Includes a thesis or dissertation.

**Duration** 2 years F/T,  
up to 5 years P/T  
**Campus** South  
**Starts** 24 Feb & 13 July 2020

**Master of Philosophy**

Focus on a particular area of interest with this research-only master's degree.

**Duration** 1 year F/T, 2 years P/T  
**Campus** North & South  
**Starts** Any time

**Doctor of Philosophy**

This degree is undertaken by research only and leads to advanced academic and theoretical knowledge in a specialist area.

**Duration** 3–6 years  
**Campus** North & South  
**Starts** Any time

**Doctor of Health Science**

Enables health professionals to pursue research that is directly relevant to their workplace. Includes papers and a thesis.

**Duration** 3½ years F/T,  
6 years P/T  
**Campus** North (some papers at  
the South Campus or  
AUT Millennium)  
**Starts** 17 Feb & 6 July 2020



"I have an interest in revitalising Māori knowledge and practice in physical activity and nutrition. One of the challenges Māori face in achieving their aspirations in health and wellbeing is that those who inform physical activity and nutrition policy, promotion and advice for Māori often fail to recognise the cultural nuances that make us unique. This leads to recommendations that don't reflect a Māori worldview. Being able to work with the Taupua Waiora Centre for Māori Health Research has been one of the highlights of my studies. Some of the academic staff at AUT aren't only leaders in their field, but also openly challenge established myths."

**Te Miri Rangi**

*Ngāti Tūwharetoa, Te Arawa, Ngāti Raukawa*

**Advisor Māori, Health Promotion Agency, Wellington**

**Master of Health Science student**

**Postgraduate Diploma in Sport and Exercise Science**

**WORLD-LEADING RESEARCH**

AUT is home to world-leading researchers across the field of health sciences. We have strong connections with the health sector and deliver leading research in health sciences. For example, we've led the world's largest study of problem gambling treatments, run New Zealand's only longitudinal study of Pacific Island families and created an award-winning app to assess people's stroke risk.

Our research centres and groups include:

- Centre for Active Ageing
- Centre for eHealth
- Centre for Interdisciplinary Trauma Research
- Centre for Midwifery and Women's Health Research
- Centre for Migrant and Refugee Research
- Centre for Pacific Health and Development Research
- Centre for Person Centred Research
- Child and Youth Health Research Centre
- Gambling and Addictions Research Centre
- Health and Rehabilitation Research Institute
- Institute of Biomedical Technologies
- National Centre for Interprofessional Education and Collaborative Practice
- National Institute for Public Health and Mental Health Research
- National Institute of Stroke and Applied Neurosciences
- Rehabilitation Innovation Centre
- Taupua Waiora Centre for Māori Health Research
- Traumatic Brain Injury Network



HOSPITALITY,  
TOURISM & EVENTS

AUT is ranked in the top 75 best hospitality and tourism schools in the world in the 2019 Academic Ranking of World Universities. Eduniversal Group has also ranked our Master of International Hospitality Management, Master of International Tourism Management and Master of Gastronomy in the top 20 in the world. Our academic staff are globally known as experts in their fields, and have research strengths across hospitality, tourism, gastronomy and events. As a postgraduate and research student you could work alongside them on ground-breaking research.



**TOP 75  
WORLDWIDE**  
for Hospitality  
& Leisure  
Management



Massive industry-  
wide connections  
in hospitality and  
tourism



Industry-relevant  
curriculum  
informed by key  
hospitality and  
tourism entities

## POSTGRADUATE STUDY

**Postgraduate Certificate in Gastronomy**

Select from our wide range of papers related to gastronomy and the meaning of food within cultures.

**Duration** ½ year F/T, up to 2 years P/T  
**Campus** City  
**Starts** 24 Feb & 13 July 2020

**Postgraduate Diploma in Gastronomy**

Choose from our wide range of papers, and develop an understanding of key concepts related to gastronomy and the significance of food in society.

**Duration** 1 year F/T, up to 3 years P/T  
**Campus** City  
**Starts** 24 Feb & 13 July 2020

**Master of Gastronomy**

Study a range of topics related to gastronomy. Ranked 16th in the world by Eduniversal Group. Includes a dissertation or applied project.

**Duration** 1½ years F/T, 4 years P/T  
**Campus** City  
**Starts** 24 Feb & 13 July 2020

**Postgraduate Certificate in International Hospitality Management**

This programme is ideal for industry professionals who want to enhance their skills and knowledge of international hospitality management.

**Duration** ½ year F/T, up to 2 years P/T  
**Campus** City  
**Starts** 24 Feb & 13 July 2020

**Postgraduate Diploma in International Hospitality Management**

Advance your knowledge of hospitality in as little as one year with our wide range of papers.

**Duration** 1 year F/T, up to 3 years P/T  
**Campus** City  
**Starts** 24 Feb & 13 July 2020

**Master of International Hospitality Management**

Research an area of your interest and prepare yourself for senior management roles. Ranked 19th in the world by Eduniversal Group.

**Duration** 1½ years F/T, 4 years P/T  
**Campus** City  
**Starts** 24 Feb & 13 July 2020

**KEY**

F/T full-time

P/T part-time

**Postgraduate Certificate in International Tourism Management**

This programme suits industry professionals who want to enhance their skills and knowledge of international tourism management.

**Duration** ½ year F/T, up to 2 years P/T  
**Campus** City  
**Starts** 24 Feb & 13 July 2020

**Postgraduate Diploma in International Tourism Management**

Develop an advanced understanding of current issues facing the tourism industry, and choose from our range of papers.

**Duration** 1 year F/T, 3 years P/T  
**Campus** City  
**Starts** 24 Feb & 13 July 2020

**Master of International Tourism Management**

Choose from a range of papers on current issues in tourism, and research an area of your interest. Ranked 18th in the world by Eduniversal Group.

**Duration** 1½ years F/T, 4 years P/T  
**Campus** City  
**Starts** 24 Feb & 13 July 2020

**Master of Philosophy**

Focus on a particular area of interest with this research-only master's degree.

**Duration** 1 year F/T, 2 years P/T  
**Campus** City  
**Starts** Any time

**Doctor of Philosophy**

This degree is undertaken by research only and leads to advanced academic and theoretical knowledge in a specialist area.

**Duration** 3–6 years  
**Campus** City  
**Starts** Any time



"Wildlife tourism is one of the fastest-growing tourism sectors in Sri Lanka, especially in areas like Ruhuna National Park (Yala). My doctoral research explores how protected area tourism can support the sustainable development of local communities and, in return, how these communities are willing to support conservation. When I decided to pursue a doctoral degree, I was looking for a supervisor with a geography background to supervise my PhD. I found a perfect fit at the New Zealand Tourism Research Institute (NZTRI) at AUT. Once I finish my studies, I'm planning to return to Sri Lanka and continue my academic career with the confidence and pride gained from the AUT PhD."

**Dinesha Senarathna**  
 Sri Lanka  
 Doctor of Philosophy candidate

**WORLD-LEADING RESEARCH**

Our research expertise spans from marine tourism to the co-creation of hospitality experiences and from event studies to gastronomy, and many of our staff are globally known as experts in their field. We're the home of the renowned New Zealand Tourism Research Institute, which delivers innovative solutions for the tourism industry and has been involved in research projects across the globe. We also publish Hospitality Insights, which showcases our ground-breaking research for hospitality practitioners.



## LANGUAGE & CULTURE

Our language and culture programmes are taught by academic staff who are passionate about their subject areas and draw on their own experience and research to inform their teaching. We understand the importance of communicating successfully in both local and global environments and the key role that culture plays. Our courses cover language in its widest sense – from creative writing, and English and its relationship with new media, to translation and interpreting, language learning and teaching, discourse analysis and the importance of intercultural competencies.



Nationally and  
internationally  
recognised  
lecturers



EMPLOYABILITY  
QS STARS 2018/19



Study under  
award-winning  
published authors  
and screenwriters

## POSTGRADUATE STUDY

**Postgraduate Certificate in Language and Culture**

Select from a wide range of papers on language and culture, and prepare yourself for further study.

**Duration** ½ year F/T, 2 years P/T  
**Campus** City  
**Starts** 24 Feb & 13 July 2020

**Postgraduate Diploma in Language and Culture**

In this one-year intensive programme you can select advanced level papers in language and culture.

**Duration** 1 year F/T, 3 years P/T  
**Campus** City  
**Starts** 24 Feb & 13 July 2020

**Master of Creative Writing**

Turn your idea into a finished script, no matter what genre of writing you're specialising in. Be mentored by well-known writers and submit a creative piece of work.

**Duration** 1 year F/T only  
**Campus** City  
**Starts** 24 Feb 2020

**Master of Language and Culture**

Conduct in-depth research in multilingualism, cultural competency, discourse, language education, translation or interpreting.

**Duration** 1 year F/T, 4 years P/T  
**Campus** City  
**Starts** 24 Feb & 13 July 2020

**Postgraduate Certificate in English and New Media Studies<sup>1</sup>**

Select from a range of papers on English and new media studies, and prepare yourself for further study.

**Duration** ½ year F/T, 2 years P/T  
**Campus** City  
**Starts** 24 Feb & 13 July 2020

**Postgraduate Diploma in English and New Media Studies<sup>1</sup>**

In this one-year programme, you can select a wide range of papers including advanced level papers in English and new media studies.

**Duration** 1 year F/T, 3 years P/T  
**Campus** City  
**Starts** 24 Feb & 13 July 2020

**Master of English and New Media Studies**

Explore the connection between technology and communication – from social media trends and virtual worlds to gaming narratives, interactive storytelling and internet memes. Includes a thesis.

**Duration** 1½ years F/T, 4 years P/T  
**Campus** City  
**Starts** 24 Feb & 13 July 2020

**Master of Professional Language Studies**

Develop advanced professional skills in teaching English or another language by combining practical classroom teaching with a sound knowledge of theory.

**Specialisation:**  
 • Language Teaching  
**Duration** 1 year F/T, 3 years P/T  
**Campus** City  
**Starts** 24 Feb & 13 July 2020

**Master of Philosophy**

Focus on a particular area of interest with this research-only master's degree.

**Duration** 1 year F/T, 2 years P/T  
**Campus** City  
**Starts** Any time

**Doctor of Philosophy**

This degree is undertaken by research only and leads to advanced academic and theoretical knowledge in a specialist area.

**Duration** 3–6 years  
**Campus** City  
**Starts** Any time

1. New programme, subject to CUAP approval

**KEY**

F/T full-time P/T part-time

**WORLD-LEADING RESEARCH**

We pride ourselves on delivering ground-breaking research and we're the proud home of several prominent research institutes and centres. Widely known for its expertise across the field of linguistics, the AUT Institute of Culture, Discourse and Communication brings together experts on culture, discourse and communication. The AUT Centre for Creative Writing is a creative hub for established and budding writers, offering an open and exciting learning environment where you can pursue your creative writing ideas and turn them into reality.

"As cliché as it may sound, I couldn't have asked for better supervisors. Doing a PhD is a long and difficult journey, and often it's also a lonely journey. However, my supervisors have always been there for me, encouraging, guiding and supporting me whenever I need them. As an educator, it goes without saying that the 'culture' of a university was the biggest factor in my overall decision to study at AUT. I appreciate what AUT has to offer students. For instance, it offers a range of support services and facilities for students on all campuses. I also felt that AUT reflects the changing world due to the fact that it's a young university."

**Rohan Willis**

USA

Doctor of Philosophy candidate



# L

## LAW

Widely known for the quality of its law programmes the AUT Law School offers a distinctive, professionally-focused legal education. Our programmes are designed to further your law career and maximise your career opportunities, and AUT law graduates are highly sought after by law firms and other employers. As a postgraduate law student, you'll be taught by academic staff who are known as experts in their field, locally and internationally; in programmes developed in close consultation with the legal profession.



Strong connections with the legal profession



Learn from leading researchers



Collaborative and interactive classes

## POSTGRADUATE STUDY

**Bachelor of Laws (Honours)**

Further your legal research and writing skills with this intensive one-year honours degree. Includes a dissertation.

**Duration** 4½ years F/T only

**Campus** City

**Starts** 24 Feb 2020

**Postgraduate Certificate in Law**

Gain advanced legal knowledge and choose from a wide range of postgraduate papers.

**Duration** ½ year F/T, 1 year P/T

**Campus** City

**Starts** 24 Feb & 13 July 2020

**Master of Laws**

Deepen your legal knowledge and legal research skills. Complete this programme entirely by thesis, entirely by coursework, or through a combination of both.

**Duration** 1 year F/T, 2 years P/T

**Campus** City

**Starts** 24 Feb & 13 July 2020

**Doctor of Philosophy**

This degree is undertaken by research only and leads to advanced academic and theoretical knowledge in a specialist area.

**Duration** 3–6 years

**Campus** City

**Starts** Any time

**Master of Philosophy**

Focus on a particular area of interest with this research-only master's degree.

**Duration** 1 year F/T, 2 years P/T

**Campus** City

**Starts** Any time

**KEY**

F/T full-time

P/T part-time

**WORLD-LEADING RESEARCH**

Our dedicated research centres ensure that we're at the forefront of developments in the legal profession. The AUT Centre for Non-Adversarial Justice aims to identify and promote various models of justice under the broad banner of non-adversarial justice. The AUT Centre for Private Law facilitates research and debate across the entire spectrum of private law including tort law, contract law, the law of unjust enrichment, property law, equity and private international law. The AUT Centre for Indigenous Rights and Law aims to raise the visibility of legal rights, issues and customary law relevant to the native peoples of Aotearoa New Zealand and the Asia Pacific region.

"The academic staff are approachable and want the best outcome for their students. The classes are smaller and more intimate to allow for one-on-one discussions with the lecturer. You aren't just another student to fill the lecture room. Many of the academics at AUT are well known in the legal profession, and that is a special experience in itself. My biggest challenge has been working full-time and studying part-time. Fortunately, the lecturers are understanding and work with you to get the best outcomes. It also helps that the degree is offered as block courses and you can have one-on-one discussions with lecturers outside the classroom, including Skype calls, when it works best for both parties."

**Sarah Rose Hames**  
Master of Laws student

# M

## MĀORI & INDIGENOUS DEVELOPMENT (TE ARA POUTAMA)

Māori and indigenous development at AUT is at the cutting edge of Māori media, culture, communication and language. Grounded in te ao Māori, our programmes have been developed in response to the need for skilled Māori professionals in the fast-growing business and media sectors. Taught by research-active and globally known academic staff, our postgraduate qualifications will prepare you to contribute in diverse ways in media, business, government, community and iwi organisations.



State-of-the-art technology



Nationally and internationally recognised lecturers



Supportive whānau environment

## POSTGRADUATE STUDY

**Postgraduate Certificate in Arts**

Choose from a wide range of postgraduate papers in Māori development, and prepare yourself for further study.

**Duration** ½ year F/T,  
1 year P/T

**Campus** City

**Starts** 1 March & 25 July 2020

**Postgraduate Diploma in Arts**

In this one-year intensive programme you can select advanced level papers in Māori development.

**Duration** 1 year F/T,  
up to 2 years P/T

**Campus** City

**Starts** 1 March & 25 July 2020

**Master of Arts**

The range of options within the Master of Arts creates a very flexible course of study, with a strong emphasis on research. Includes a thesis.

Specialisation:  
• Māori Development

**Duration** 2 years F/T,  
up to 5 years P/T

**Campus** City

**Starts** 1 March & 25 July 2020

**KEY**

F/T full-time

P/T part-time

**Master of Philosophy**

Focus on a particular area of interest with this research-only master's degree.

**Duration** 1 year F/T,  
2 years P/T

**Campus** City

**Starts** Any time

**Doctor of Philosophy**

This degree is undertaken by research only and leads to advanced academic and theoretical knowledge in a specialist area.

**Duration** 3–6 years

**Campus** City

**Starts** Any time

**WORLD-LEADING RESEARCH**

We deliver leading research in a number of areas within Māori and indigenous development, working closely with academics and organisations from around New Zealand and the world. As a postgraduate student you work closely with academic staff who are known as experts in their field – from Māori business and entrepreneurship to Māori media and from Mātauranga Māori to New Zealand history and the Treaty of Waitangi.

"I was attracted to Te Ara Poutama by the reputation of its academic staff. My supervisor Dr Ella Henry is one of the academic staff in Te Ara Poutama, and AUT has a good reputation for research. That was very important to me. I relish my talks with Ella who continues to challenge me and helps me clarify my thinking. My PhD is a very creative process for me. For my doctoral research, I'm focusing on the topic of evaluation, which is a very important tool for Māori and indigenous development. I believe my research is important for Māori, Pacific and indigenous development and wellbeing, which is something I continue to be committed to."

**Tania Wolfgramm**

*Whakatohea, Te Aupouri, Ngai Tai, Vava'u Tonga*

**Doctor of Philosophy candidate**

## L

## LABS &amp; FACILITIES

AUT's state-of-the-art facilities ensure students have access to the latest industry-leading technology, including top quality video and motion capture studios, a hi-tech textile design laboratory, a 3D printing lab, radio and TV studios, and the country's most advanced additive manufacturing centre.

# S

## SCIENCE

Environmental sustainability, innovative food production, geospatial science and chemical synthesis techniques are some of the key ingredients that will shape the future world we live in. Postgraduate study in science at AUT will prepare you for a rewarding career in a wide range of industries and professions. You'll be taught by research-active academic staff who are known as experts in their field, and our collaboration with industry means that your study will be highly relevant to your career. Our alumni contribute to scientific innovation and globally leading research in many fields, and are highly sought-after around the world.



Our science students have access to the latest technology and labs



Get out of the classroom with our science field trips as far as the Antarctic



Internationally recognised lecturers

## POSTGRADUATE STUDY

**Bachelor of Science (Honours)**

Prepare yourself for higher-level careers or further study with this honours degree, which includes a dissertation.

**Duration** 1 year F/T, 2 years P/T  
**Campus** City  
**Starts** 24 Feb 2020

**Bachelor of Advanced Science (Honours)**

Take your understanding of science further with our four-year Bachelor of Advanced Science (Honours) and select one of eight specialisations.

Specialisations:

- Applied Conservation
- Biomedical Science
- Chemistry
- Environmental Science
- Food Science
- Geospatial Science
- Microbiology
- Molecular Genetics

**Duration** 4 years F/T, 8 years P/T  
**Campus** City  
**Starts** 24 Feb 2020

**Postgraduate Certificate in Science**

This coursework-based qualification helps you broaden your knowledge in science, with a wide range of papers to choose from.

**Duration** ½ year F/T, 1 year P/T  
**Campus** City  
**Starts** 24 Feb & 13 July 2020

**Postgraduate Diploma in Science**

Advance your understanding of science in as little as one year and choose from a range of postgraduate papers.

Specialisations:

- Applied Conservation
- Biomedical Science
- Chemistry
- Environmental Science
- Food Science
- Geospatial Science
- Microbiology
- Molecular Genetics

**Duration** 1 year F/T, 3 years P/T  
**Campus** City  
**Starts** 24 Feb & 13 July 2020

**Master of Science**

Within this 180-point programme you'll undertake a research project in an area of your interest, supervised by our expert staff.

Specialisations:

- Applied Conservation
- Biomedical Science
- Chemistry
- Environmental Science
- Food Science
- Geospatial Science
- Microbiology
- Molecular Genetics

**Duration** 1 year F/T, 3 years P/T  
**Campus** City  
**Starts** 24 Feb & 13 July 2020

**Master of Science (Research)**

During this 240-point programme you'll complete a research thesis in an area of your interest under the guidance of expert staff.

Specialisations:

- Applied Conservation
- Biomedical Science
- Chemistry
- Environmental Science
- Food Science
- Geospatial Science
- Microbiology
- Molecular Genetics

**Duration** 2 years F/T, up to 5 years P/T  
**Campus** City  
**Starts** 24 Feb & 13 July 2020

**Postgraduate Certificate in Medical Laboratory Science**

Gain specialist skills in a chosen field of medical laboratory science and learn to apply contemporary theory to current practice.

**Duration** ½ year F/T, 2 years P/T  
**Campus** City  
**Starts** 24 Feb 2020

**Postgraduate Diploma in Medical Laboratory Science**

Follow either a management or specialised scientist pathway in this postgraduate diploma.

**Duration** 1 year F/T, up to 3 years P/T  
**Campus** City  
**Starts** 24 Feb 2020

**Master of Medical Laboratory Science**

Follow either a management or specialised scientist pathway, and develop specialist skills in a chosen field of medical laboratory science. Includes a thesis.

**Duration** 2 years F/T, up to 5 years P/T  
**Campus** City  
**Starts** 24 Feb & 13 July 2020

**Master of Philosophy**

Focus on a particular area of interest with this research-only master's degree.

**Duration** 1 year F/T, 2 years P/T  
**Campus** City  
**Starts** Any time

**Doctor of Philosophy**

This degree is undertaken by research only and leads to advanced academic and theoretical knowledge in a specialist area.

**Duration** 3 -6 years  
**Campus** City  
**Starts** Any time

**WORLD-LEADING RESEARCH**

Our research is focused on key scientific issues of regional and global significance, and our globally renowned researchers are experts in areas as diverse as applied ecology, chemistry, biomedical science and food science. As a postgraduate student, you could conduct your research in close collaboration with our Centre for Food Science or Institute for Applied Ecology New Zealand. You have access to top facilities and equipment for your research, like aerial drones and marine research vessels. Our outstanding laboratories include the AUT Roche Diagnostics Laboratory – which has state-of-the-art medical and biomedical testing equipment, and is the only university lab of its kind in New Zealand.

"For every 100 kg of avocado oil, 350 kg of waste skin and seeds, 220 kg of waste avocado pomace and 620 kg of waste water is generated. These by-products are full of antioxidant, antifungal, antimicrobial and flavouring ingredients, and finding ways to use these could dramatically decrease the industry's environmental impact and increase profitability. My PhD research is focused on converting these by-products into functional ingredients. AUT provides one of the most supportive and encouraging environments for postgraduate study, and we have a vast range of equipment and facilities to use and access."

**Rahul Kaushik Permal**  
 Doctor of Philosophy candidate  
 Bachelor of Science (Honours)  
 Bachelor of Science in Food Science

**KEY**

F/T full-time

P/T part-time

# S

## SOCIAL SCIENCES & PUBLIC POLICY

If you want a rewarding career where you can make a difference, postgraduate study in social sciences and public policy is the perfect start. At AUT you'll study society at many levels – from individuals, families and communities, governments and cultures through to our global system. We have an active research community, and our academic staff are research-active and globally known as experts in areas as diverse as economics, human rights, gender equality, ethnicity and race, identity, community development, social structure, social data analytics, and criminology and police.



Research  
undertaken with  
national and local  
government



Master of Human  
Rights is the only  
degree of its kind  
in NZ



Nationally and  
internationally  
recognised  
lecturers

POSTGRADUATE STUDY

Bachelor of Arts (Honours)	Master of Arts	Postgraduate Certificate in Arts
Prepare yourself for higher-level careers or further study with this honours degree, which includes a dissertation.  Specialisations: <ul style="list-style-type: none"><li>Psychology</li><li>Criminology and Criminal Justice</li></ul>	The Master of Arts in Psychology equips you with strong research skills so you can conduct your own research project to complete a thesis.  Specialisation: <ul style="list-style-type: none"><li>Psychology</li></ul>	Select from a range of papers in psychology, and prepare for further study in the Master of Arts.  Specialisation: <ul style="list-style-type: none"><li>Psychology</li></ul>
Duration1 year F/T, up to 2 years P/T	Duration2 years F/T, up to 5 years P/T	Duration½ year F/T, 2 years P/T
CampusCity	CampusCity	CampusCity
Starts15 Feb (Criminology and Criminal Justice) & 24 Feb 2020 (Psychology)	Starts24 Feb 2020	Starts24 Feb 2020

KEY

F/T full-time    P/T part-time

WORLD-LEADING RESEARCH

We believe in high-quality research that has impact, and our world-class researchers have expertise across social sciences and social justice – from human rights and gender equality, to psychology, criminology and community development. As a postgraduate student, you work closely with some of New Zealand’s most widely known experts in social sciences and social justice. Our experienced lecturers constantly draw on their own international and New Zealand experience and research to inform their teaching. You could also benefit from the expertise of the Centre for Social Data Analytics, which applies strong data science to linked data, undertaking research that tells us new things about the human experience.



“In my years of studying here at AUT, I was fortunate to have an academic mentor whose passion for children, children’s rights and child policy kindled my passion for this area of study. It was through her influence and mentorship that I found my purpose and where I ‘fit’ in academia. For my PhD thesis I’m focusing on children’s right to have their views taken into account when adults are making decisions that affect their lives. I’m hoping that my PhD thesis will provide a platform for future research that is dedicated to ensuring young people’s rights are protected and adhered to by the justice system.”

**Jazz Robson**  
Ngāti Tuwharetoa and Ngāti Raukawa  
Doctor of Philosophy candidate  
Master of Arts with First Class Honours  
Bachelor of Arts in Psychology and Criminology

Master of Criminology and Criminal Justice	Master of Human Rights	Master of Philosophy
Learn from some of Aotearoa’s leading criminologists. Consists of block courses and includes an applied research project, dissertation or thesis.	Make a difference and convert skills and knowledge into applied human rights practice. Consists of block courses and includes an applied research project, dissertation or thesis.	Focus on a particular area of interest with this research-only master’s degree.
Duration1½ years F/T	Duration1 year F/T (including Summer School)	Duration1 year F/T, 2 years P/T
CampusCity	CampusCity	CampusCity
Starts15 Feb 2020	Starts18 Feb 2020	StartsAny time

Postgraduate Diploma in Criminology and Criminal Justice	Postgraduate Certificate in Human Rights	Doctor of Philosophy
Develop in-depth knowledge and research skills in criminology and criminal justice.	Choose from a range of papers on human rights issues, delivered by international experts. Block course delivery.	This degree is undertaken by research only and leads to advanced academic and theoretical knowledge in a specialist area.
Duration1 year F/T	Duration½ year F/T	Duration3–6 years
CampusCity	CampusCity	CampusCity
Starts15 Feb 2020	Starts18 Feb 2020	StartsAny time

Postgraduate Diploma in Human Rights
Learn from renowned experts on human rights issues, and select from a range of papers.
Duration1 year F/T
CampusCity
Starts18 Feb 2020

“Human rights is a key area humanity needs to grapple with going forward. The Master of Human Rights enabled me to use to my skillset in law and arts to challenge myself in diverse and unique ways, with papers and assessments that have real-life applicability. The teaching staff were extremely strong and included lecturers who are known for being leaders in different areas of human rights. Having done my undergraduate studies at AUT, I knew that the staff at the School of Social Sciences and Public Policy are truly special. You know they genuinely want to work with you to help you reach your goals.”

**Kaden Wilson**  
Ngāti Rangitihī  
Policy Analyst, Te Puni Kōkiri  
Master of Human Rights  
Bachelor of Arts in Conflict Resolution and Bachelor of Laws



# S

## SPORT & RECREATION

Ranked in the top 30 in the world in the QS World University Subject Rankings 2019 and considered New Zealand's top university for sport science by the Academic Ranking of World Universities, AUT offers New Zealand's most advanced sports qualifications. Learn at our state-of-the-art facilities, including AUT Millennium, a high-performance sport and health facility. During your study with us, you'll be supported by research-active academic staff who are committed to helping you achieve your highest potential. Our world-class researchers work with leading organisations and athletes to challenge current practices. Many of our staff have been elite athletes, coaches and adventurers, and they all love what they do.



**TOP 30**  
WORLDWIDE  
for Sport

NZ'S TOP RANKED  
UNIVERSITY



for human movement  
& sport science  
research



Home of High  
Performance Sport  
New Zealand

## POSTGRADUATE STUDY

**Bachelor of Sport and Recreation (Honours)**

Prepare yourself for higher-level careers or further study with this honours degree, which includes a dissertation.

**Duration** 1 year F/T, 3 years P/T

**Campus** North

**Starts** 24 Feb & 13 July 2020

**Postgraduate Certificate in Sport and Exercise**

Choose from a wide range of postgraduate papers that cover topics within sport and exercise.

**Duration** ½ year F/T, up to 2 years P/T

**Campus** South<sup>1</sup>

**Starts** 24 Feb & 13 July 2020

**Postgraduate Diploma in Sport and Exercise**

Develop an advanced understanding of sport and exercise, and choose from a range of papers

**Duration** 1 year F/T, up to 3 years P/T

**Campus** South<sup>1</sup>

**Starts** 24 Feb & 13 July 2020

**Master of Sport and Exercise Science**

Build on your existing knowledge and complete applied research under the guidance of expert staff. Includes a thesis.

**Duration** 2 years F/T, up to 5 years P/T

**Campus** South<sup>1</sup>

**Starts** 24 Feb & 13 July 2020

**Master of Philosophy**

Focus on a particular area of interest with this research-only master's degree.

**Duration** 1 year F/T, 2 years P/T

**Campus** North & South

**Starts** Any time

**Doctor of Philosophy**

This degree is undertaken by research only and leads to advanced academic and theoretical knowledge in a specialist area.

**Duration** 3-6 years

**Campus** North & South

**Starts** Any time

**KEY**

F/T full-time

P/T part-time

1. Some classes are also taught at the North Campus, City Campus and AUT Millennium.

## WORLD-LEADING RESEARCH

AUT is globally known for its leading sport and exercise science research. Our research covers sport and activity-related areas, as well as performance, nutrition, coaching and human potential. We're proud to be the home of New Zealand's top sport and fitness facility, AUT Millennium, which helps our communities be healthy and our top athletes become champions. Based at AUT Millennium, the Sports Performance Research Institute New Zealand (SPRINZ) is New Zealand's number one sports research institute. Its world-class laboratory facilities and international reputation attract many overseas researchers and students to New Zealand, and SPRINZ research has received funding from organisations like the Health Research Council, Sport New Zealand and the World Health Organization.

"For my PhD research, I'm focusing on mild traumatic brain injury or concussion; the most common type of traumatic brain injury. With the growing concern of mild traumatic brain injury in contact sports like rugby union it's essential to identify objective methods to assist in clinical assessment, diagnosis and management of sports-related mild traumatic brain injury to ensure athletes don't return to play until they're fully recovered. When I came here on one of my first days at AUT and saw the facilities at AUT Millennium I was extremely impressed. AUT Millennium is very friendly and supportive, especially at SPRINZ."

**Josh McGeown**

Canada

Doctor of Philosophy candidate

**AUT ROCHE DIAGNOSTICS LABORATORY**

As a science student, you have access to the AUT Roche Diagnostics Laboratory, which has state-of-the-art medical and biomedical testing equipment, and is the only university lab of its kind in New Zealand.

**RADIO ASTRONOMY OBSERVATORY**

Our Radio Astronomy Observatory in Warkworth is the home of AUT's 12-metre and 30-metre radio telescopes, which are involved in ground-breaking research with world-leading observatories and space agencies. Postgraduate computer and mathematical sciences students are often involved in these projects.

**AUT MILLENNIUM**

Postgraduate sport and recreation students can conduct their research using the outstanding research labs and sports performance clinics at AUT Millennium, New Zealand's world-class sports training facility.



# HOW TO APPLY

Below is the step-by-step guide to the applications process. For more information visit [aut.ac.nz/apply](http://aut.ac.nz/apply)

1

## APPLY EARLY

Places are limited. Submit your application well before the semester starts.

### APPLYING FOR 2020

- Semester 1  
– apply by 2 December 2019
- Semester 2  
– apply by 1 May 2020

Some programmes have earlier application dates. Check the AUT website for details.

### Applying for the Master of Philosophy (MPhil) and Doctor of Philosophy (PhD)

If you are planning to enrol in a Master of Philosophy (MPhil) or Doctor of Philosophy (PhD) at AUT, email the Graduate Research School

[doctoral.and.mphil.admissions@aut.ac.nz](mailto:doctoral.and.mphil.admissions@aut.ac.nz)

2

## COMPLETE THE APPLICATION FORM

- Apply online
- Indicate your programme(s) of choice and major (if known)

International students can also apply using an AUT approved international agent. For a list of AUT registered agents visit [aut.ac.nz/international-agents](http://aut.ac.nz/international-agents)

## SUBMIT YOUR APPLICATION

## WE ACKNOWLEDGE YOUR APPLICATION

- We will send you an acknowledgment email, which explains how to check the status of your application
- We will contact you if we need more information

3

## WE ASSESS YOUR APPLICATION

- We assess your application to ensure you have met the entry criteria for the programme(s) you are applying for
- We consider your academic history and relevant experience to ensure you can succeed in your programme
- We let you know if your application has been successful

## POSSIBLE OUTCOMES

**CONFIRMED** We would like to offer you a place to study at AUT

**PROVISIONAL** You have met some of the criteria for entry to your chosen programme of study and we would like to offer you a provisional place to study at AUT. If you don't meet the rest of the requirements then this offer will be withdrawn

**CONDITIONAL** You have to meet the conditions and approvals listed in your conditional offer to be able to secure a formal offer of place

**DECLINED** If you don't meet the entry requirements or all places are taken, we may offer you an alternative programme

## ACCEPT YOUR OFFER

# ENTRY REQUIREMENTS

All applicants need to meet AUT’s minimum entry requirements. Because of competition for places, you may need to have more than the minimum entry requirements for admission to some programmes. Most postgraduate students already have a bachelor’s degree. However if you’re planning to change your career direction and study in a different field, you may need to start with a graduate diploma. Entry requirements for each programme you can study at AUT are listed on the AUT website. The information below serves as a guide only.

For more information and specific entry requirements for each programme visit [aut.ac.nz/study](http://aut.ac.nz/study)

## Bachelor’s degree with honours

You need a bachelor’s degree in a relevant field, with a minimum B average in papers at level 7.

Bachelor’s degrees with honours are usually aimed at high-performing bachelor’s degree students at AUT who want to further their understanding of their subject area. They can prepare you for further study in a master’s or doctoral degree.

## Postgraduate certificate or diploma

You need to have completed one of the following in a relevant field:

- Bachelor’s degree
- Professional qualification equivalent to a 3-year bachelor’s degree
- Professional experience equivalent to a bachelor’s degree or recognised professional qualification

Postgraduate certificates and diplomas can prepare you for further study in a related master’s degree.

## Master’s degree (less than 180 points)

You need to have completed one of the following to a merit standard in a relevant field:

- A 3-year bachelor’s degree and one year of advanced study
- A 4-year bachelor’s degree
- A postgraduate diploma
- An undergraduate degree followed by relevant professional experience

## Master’s degree (180 or 240 points)

You need to have completed one of the following to a merit standard in a relevant field:

- Bachelor’s degree
- Graduate diploma
- Professional qualification equivalent to a 3-year undergraduate degree
- Professional experience equivalent to an undergraduate degree or recognised professional qualification

## Master of Philosophy

You need to have completed one of the following with the equivalent of a B grade average or higher:

- A four-year bachelor’s degree
- A bachelor’s honours degree
- A bachelor’s degree and a postgraduate diploma
- A bachelor’s degree and at least three years of experience relevant to the proposed research

## Doctoral degrees

You need to have completed one of the following in a discipline appropriate to the proposed research:

- A master’s degree with honours
- A bachelor’s degree with honours (equivalent to four years of study)

The degree must have a standard equivalent to first-class or second-class (first division) honours.

The degree should include advanced learning in research, execution of a research project and a written report on the research.

For professional doctorates you also need a minimum of five years’ professional experience in the specific area of study.

# ENGLISH LANGUAGE REQUIREMENTS

AUT classes are taught in English. If English, Māori or NZ Sign Language is not your first language, you need to prove you have the minimum level of English for your chosen AUT programme.

We need to assess your level of English to ensure you can succeed in your programme. AUT does not accept responsibility if you fail courses because of a lack of competence in English.

## Students with qualifications from outside of New Zealand

Applying on the basis of a qualification from another country? Use your official results for one of the following tests or qualifications to meet the English language requirements. Results can be up to two years old.

### IELTS (Academic)

Due to professional registration requirements, IELTS is the required English test for most health science degrees. It’s also the preferred English test for all other AUT qualifications.

Some programmes have higher requirements than the ones listed below.

### Doctoral degrees

IELTS 6.5 overall with 7.0\* in Writing and all other bands 6.0 or higher

\*Engineering, Computer and Mathematical Sciences only require a 6.5 Writing Band

### Other postgraduate programmes

IELTS 6.5 overall with all bands 6.0 or higher

### Other recognised English language tests

Use the following table to see what you need to meet the English language requirements through the Certificate in English for Academic Study (CertEAS), GIE, TOEFL iBT®, Cambridge English: Advanced (CAE) or the Pearson Test of English (PTE).

Test results shouldn’t be more than two years old. Other recognised tests of English language proficiency may be accepted on a case-by-case basis as agreed by AUT.

### Qualifications taught and assessed in English

You can use the official results of an academic qualification completed in a country where English is the main language:

- Must have been taught and assessed in English – evidence is required
- Must be at an appropriate level

MINIMUM OVERALL SCORE					
IELTS	Cert EAS	GIE <sup>1</sup>	TOEFL iBT	CAE from 2015	Pearson (PTE)
6.5	A	B+	90	176	58
7.0	–	A	100	185	65

INDIVIDUAL SKILL/BAND SCORE					
IELTS (R/L/S/W)	Cert EAS	GIE <sup>1</sup>	TOEFL iBT <sup>2</sup> (R/L/S/W)	CAE from 2015	Pearson (PTE)
6.0	TBD <sup>3</sup>	B	19/19/20/22	169	50
6.5	A	B+	20/20/20/24	176	58
7.0	–	A	24/24/23/27	185	65

1. GIE can’t be used to meet doctoral English language entry requirements.  
2. Individual band scores for TOEFL iBT are indicative and variations of up to two points may be accepted, as long as the minimum overall score is achieved.  
3. Depends on your chosen qualification. Refer to [aut.ac.nz/calendar](http://aut.ac.nz/calendar)

## English language courses

### AUT School of Language and Culture

If you don't meet the English language entry requirements for your programme, AUT's School of Language and Culture offers certificate and diploma programmes to meet entry requirements for further study at university level.

IELTS required: IELTS 5.5 with no band less than 5.0 for Diploma in English Language and Certificate in English for Academic Study. Certificate in English Language students are placed at an appropriate level according to the results of a placement test.

To find out more visit [aut.ac.nz/languages](http://aut.ac.nz/languages)

### International House

AUT International House is the English language school for international students at AUT and is located on the City Campus. International House also offers general English language training.

#### GIE Academic Pathway

- Full-time, 23 hours per week, 12-week academic preparation and study skills programme
- Offered three times a year
- Successful completion provides a pathway into a range of AUT programmes (exceptions are degrees requiring board certification on graduation and PhD study)
- IELTS entry requirement: 5.5 overall with a minimum of 5.5 in Reading and Writing and 5.0 in Speaking and Listening

We have additional programmes for students with lower IELTS.

You need to be at least 18 years to enrol. There will be an oral and written placement test when you arrive.

To find out more visit [aut.ac.nz/ih](http://aut.ac.nz/ih)



## FINANCE & SCHOLARSHIPS

Cost is an important factor when thinking about university study. Visit our website [aut.ac.nz/fees](http://aut.ac.nz/fees) to get an idea of the approximate tuition fees at AUT, and different options to help you fund your education including scholarships, student loans and allowances.

### Scholarships and awards

Scholarships and awards are a great way to fund your university study. There is a wide range of scholarships and awards available to AUT postgraduate students:

**AUT Postgraduate Scholarships** – full fees (domestic equivalent) for one year of full-time study at level 8 or above

**AUT Master's by Research Scholarships** – full fees (domestic equivalent) plus stipend for one year of full-time study

**AUT Doctoral Scholarships** – three types of awards at doctoral level:

- **AUT Vice-Chancellor's Doctoral Scholarships** – full fees (domestic equivalent) plus annual stipend of \$25,000 for three years of full-time study (conditions apply)
- **AUT Doctoral Fee Scholarships** – full fees only (domestic equivalent) for up to three years of full-time study
- **AUT Doctoral Scholarships** – full fees (domestic equivalent) plus annual stipend of \$15,000, \$20,000 or \$25,000 for up to three years of full-time study

Visit the scholarships website or scholarships database for a current list of postgraduate scholarships offered by AUT and external funders, as well as eligibility criteria, application forms and closing dates. You can also contact AUT's Scholarships Office for advice on scholarships, awards and the scholarship application process. Call +64 9 921 9837 or visit [aut.ac.nz/scholarships](http://aut.ac.nz/scholarships)

### Student loans and allowances<sup>1</sup>

If you are a full-time domestic student, you may qualify for a student loan or allowance. Student loans and allowances are administered and paid by StudyLink. The application process can take some time, so it's a good idea to apply early. You can apply for a student loan or student allowance before your enrolment at AUT is complete.

Call 0800 88 99 00 or visit [www.studylink.govt.nz](http://www.studylink.govt.nz)

1. For domestic students only, not available to international students

### Help with planning and budgeting

We know that sometimes things happen and financial stress can impact your academic success. That's why we offer financial support that ranges from offering grocery or fuel vouchers, to helping with that unexpected bill.

### StudyLink website

Visit [www.studylink.govt.nz](http://www.studylink.govt.nz) for tools, tips and information to help you plan and understand the costs you will have while studying.

## INTERNATIONAL STUDENTS: PREPARING TO STUDY IN NEW ZEALAND

### Scholarships for international students

If you live overseas and are considering university study in New Zealand, you are eligible for AUT scholarships, particularly for postgraduate study. For example, if you are planning to enrol in a doctoral degree you may be eligible for the Vice-Chancellor's Doctoral Scholarships.

Many countries also provide their own scholarship programmes for students to study overseas and you should check the availability of these. The New Zealand Government also offers scholarships for international students to study in New Zealand.

To find out more visit [aut.ac.nz/scholarships](https://aut.ac.nz/scholarships)

### International student fee payment options

AUT has partnered with Western Union to provide international students with a reliable, fast and secure way for you to pay. This payment method is by telegraphic transfer in local currency where available.

For the full list of payment options visit [aut.ac.nz/international/payment](https://aut.ac.nz/international/payment)

### International fee refund

If you need to change or withdraw from your programme of study, you may be entitled to a refund. Our friendly Student Hub team can answer any question you may have about refunds or the refund policy.

To find out more visit [aut.ac.nz/fee-refunds](https://aut.ac.nz/fee-refunds)

### The Education (Pastoral Care of International Students) Code of Practice

AUT has agreed to observe and be bound by the New Zealand Government's Code of Practice for the Pastoral Care of International Students.

Copies of the code are available in six languages at [www.nzqa.govt.nz/the-code](https://www.nzqa.govt.nz/the-code)

### iStudent Complaints

This is an independent Dispute Resolution Scheme (DRS) established by the New Zealand Government to assist international students with any disputes between them and their providers.

To find out more visit [www.istudent.org.nz/about-istudent-complaints](https://www.istudent.org.nz/about-istudent-complaints)

### Your student visa

One of the most important steps is to get your student visa organised before you reach New Zealand. Without a valid visa and medical/travel insurance it's unlawful to study in New Zealand.

To find out more visit [www.immigration.govt.nz](https://www.immigration.govt.nz) or [www.studyinnewzealand.govt.nz/how-to-apply/visas](https://www.studyinnewzealand.govt.nz/how-to-apply/visas)

### Living costs

If you are coming to New Zealand on a student visa, Immigration New Zealand requires you to have NZ\$15,000 available plus an additional NZ\$2,000 to cover a return ticket home. You will need more than this to adequately cover your living costs. Living costs can vary considerably depending on your lifestyle.

To find out more visit [www.studyinnewzealand.govt.nz/live-work/cost-of-living](https://www.studyinnewzealand.govt.nz/live-work/cost-of-living)

### Working in New Zealand

As an international student you can work 20 hours per week during the academic year and full-time during scheduled vacations. Please note that the number of hours you can work during your study will not be enough to fund your studies. Master's by research and doctoral students may be granted unlimited work rights.

To find out more visit [www.immigration.govt.nz/new-zealand-visas/options/study/working-during-after-your-study/working-on-a-student-visa](https://www.immigration.govt.nz/new-zealand-visas/options/study/working-during-after-your-study/working-on-a-student-visa)

### Medical and travel insurance

The New Zealand Government requires all international students to have appropriate insurance. Most international students are not entitled to publicly funded health services while in New Zealand. If you receive medical treatment during your visit, you may be liable for the full costs of the treatment. That is why it is so important that you have medical and travel insurance while you are studying at AUT.

To make it easy, we include AUT's default medical insurance, the Studentsafe-University plan, as part of your Offer of Place. You don't have to accept the AUT insurance policy, and can choose an alternative from an approved provider on our website.

To find out more visit [aut.ac.nz/international/insurance](https://aut.ac.nz/international/insurance)

### Finding the right place to live

AUT's self-catered student accommodation is convenient and modern apartment style living, just minutes away from our City or North Campus. You'll also enjoy an exciting and supportive community with a unique residential life programme. If you don't choose to live on campus, our accommodation advisor can help you find, apply for and rent private accommodation that suits your needs. You can also get guidance on accommodation costs, contracts, bonds and tenancy issues.

To find out more visit [aut.ac.nz/accommodation](https://aut.ac.nz/accommodation)

## FIND OUT MORE

### Visit our website

To find out more about postgraduate study at AUT, including more details about our programmes and the papers you could study, entry requirements, and information about academic staff and their areas of expertise visit [aut.ac.nz](https://aut.ac.nz)

### Contact us online

If you have any questions about postgraduate study, you can contact us at [aut.ac.nz/enquire](https://aut.ac.nz/enquire)

### Drop in and see us

#### AUT Student Hub

**City Campus** – Level 2, ground entry, WA building, 55 Wellesley Street East, Auckland City, Auckland

**North Campus** – AS building, 90 Akoranga Drive, Northcote, Auckland

**South Campus** – MB building, 640 Great South Road, Manukau, Auckland

#### Meet AUT staff overseas

The AUT International team visit many countries to meet future international students and discuss study options. To find out when AUT staff are visiting your country visit [aut.ac.nz/events](https://aut.ac.nz/events)



**0800 AUT UNI (0800 288 864)**

Auckland University of Technology  
Auckland, New Zealand  
[aut.ac.nz](http://aut.ac.nz)

**Enquire now**

[aut.ac.nz/enquire](http://aut.ac.nz/enquire)

**CITY CAMPUS**

55 Wellesley Street East, Auckland Central

**NORTH CAMPUS**

90 Akoranga Drive, Northcote, Auckland

**SOUTH CAMPUS**

640 Great South Road, Manukau, Auckland

**Connect with us now:**



@autuni

#autuni