

# SOUTH CAMPUS

PROGRAMME GUIDE 2019

# AUT



EMPLOYABILITY  
QS STARS 2018

**TOP 2%** UNIVERSITIES  
WORLDWIDE

A small, stylized world map graphic in white, showing the continents.

The only university  
in South Auckland

# Welcome to AUT South Campus



**Kia ora, warm Pacific greetings and welcome.**

At the AUT South Campus, we offer a comprehensive range of qualifications across a wide selection of disciplines. Included in our mix are more specialised programmes that are unique to this campus. By choosing to study at AUT, you will benefit from studying at one of New Zealand's world-ranked universities and you will be taught by staff who are at the cutting edge in their fields.

At AUT, we pride ourselves on the quality of our learning and student experience. The South Campus boasts the University's award-winning Mana Hauora building with its blend of digitally enhanced formal and informal learning spaces. Set in beautiful landscaped parkland, the AUT South Campus is close to public transport and adjacent to the Manukau CBD, and combines the buzz of a modern university campus with the opportunity for quiet reflection.

By choosing to study at the AUT South Campus, you will have access to a network of opportunities and expert academic knowledge in an environment that is inspiring, social, supportive and fun. These are the hallmarks of AUT graduates and are much sought after by employers not only in New Zealand, but globally.

Together with all the staff based at AUT South Campus, I look forward to welcoming you to the campus and supporting you in whatever way we can.

**Walter Fraser**

Executive Director, AUT South Campus

# Welcome to AUT

E ngā mana, e ngā reo  
E te iti, e te rahi  
E ngā mātāwaka o ngā tōpito o te ao  
Ngā mahuetanga iho e kawē nei i ngā  
moemoeā o rātou mā  
Tēnā koutou katoa

Piki mai rā, kake mai rā,  
Nau mai, haere mai ki tēnei o ngā wānanga  
Whakatau mai i raro i te korowai āhuru  
o Te Wānanga  
Aronui o Tāmaki Makau Rau

To the prestigious, the many voices  
The few, the great  
To those of all races and creeds  
We who remain to fulfil the dreams and  
aspirations of the ancestors  
Greetings one and all

Climb, ascend  
Embark on the journey of knowledge  
Let us at AUT embrace and empower you  
To strive for and achieve excellence

Te whakatupu i te kōunga, i te mana taurite me ngā  
tikanga matatika, i ngā pūkenga ako,  
i ngā pūkenga whakaako me te āta rangahau hei hāpai  
i ngā hāpori whānui o te motu, otirā, o te ao.

To foster excellence, equity and ethics in learning,  
teaching, research and scholarship, and in so doing  
serve our regional, national and international  
communities.

# Contents

## About AUT

02 Why study at the AUT South Campus?

68 Campus map

## Course information

### All study areas

06 Master of Philosophy

07 Doctor of Philosophy

### Art & Design

08 Bachelor of Design

10 Certificate in Science and Technology

### Business

11 Bachelor of Business

15 Certificate in Business

16 Certificate in Business Studies

17 Graduate Diploma in Business and  
Graduate Certificate in Business

### Education

18 Bachelor of Education ([Specialty] Teaching)

22 Bachelor of Arts in Education

24 Graduate Diploma in Secondary Teaching

26 Master of Education and Postgraduate Certificate  
in Education

28 Master of Educational Leadership and  
Postgraduate Certificate in Educational Leadership

30 Master of Education Practice and Postgraduate  
Certificate in Education Practice

### Engineering, Computer & Mathematical Sciences

31 Bachelor of Computer and Information Sciences

34 Bachelor of Engineering Technology in Building  
Engineering

35 Certificate in Science and Technology

36 Master of Health Informatics

### Health Sciences

37 Bachelor of Health Science in Counselling, Health  
Administration, Health Promotion, Paramedicine

40 Bachelor of Health Science (Midwifery)

42 Certificate in Sport and Recreation

43 Diploma in Paramedic Science

44 Graduate Diploma in Health Science and Graduate  
Certificate in Health Science

45 Postgraduate Diploma in Health Science and  
Postgraduate Certificate in Health Science

46 Master of Health Practice

47 Master of Health Science

48 Master of Emergency Management, Postgraduate  
Diploma and Postgraduate Certificate in  
Emergency Management

50 Master of Public Health, Postgraduate Diploma  
and Postgraduate Certificate in Public Health

51 Doctor of Health Science

### Law

53 Bachelor of Laws

55 Certificate in Legal Studies

### Sport & Recreation

56 Bachelor of Sport and Recreation

58 Graduate Diploma in Sport and Exercise and  
Graduate Certificate in Sport and Exercise

59 Certificate in Sport and Recreation

60 Master of Sport and Exercise, Postgraduate  
Diploma and Postgraduate Certificate in Sport  
and Exercise

## Applying for your programme

62 How to apply

64 University entrance

66 Fees and payment

67 Find out more

**Key:** F/T = full-time, P/T = part-time

Image 1 on page 4 by Zee Shake Lee.

**Cover:** 5 out of 5 (QS Stars University Rating 2018), Top 2% (Universities New Zealand website [www.universitiesnz.ac.nz](http://www.universitiesnz.ac.nz))

The information contained in this programme guide is primarily intended for domestic students. International students should visit [www.aut.ac.nz/international](http://www.aut.ac.nz/international)

**Disclaimer:** Although every reasonable effort is made to ensure accuracy, the information in this document is provided as a general guide only for students and is subject to change. All students enrolling at AUT should consult its official document, the AUT Calendar, which is available online at [www.aut.ac.nz/calendar](http://www.aut.ac.nz/calendar), to ensure that they are aware of, and comply with, all regulations, requirements and policies.

The information contained in this programme guide was correct at the time of print, May 2018.

# WHY STUDY AT THE AUT SOUTH CAMPUS?



Nationally and  
internationally  
recognised lecturers



90%

of South Campus  
students would  
recommend AUT



EMPLOYABILITY





1



2



3

- 1 You learn in an interactive environment where you collaborate with your classmates 2 The campus' newest facility, the award-winning Mana Hauora building  
3 We offer a wide range of qualifications

## Creating the leaders of tomorrow

If you want a university with future-focused teaching, an engaging learning environment that embraces people and ideas, and programmes designed for rewarding careers – then welcome to AUT. QS World University Rankings place AUT in the top 2% of universities worldwide, with five-star ratings for teaching, employability, internationalisation, access and facilities. We're in the top 150 of universities worldwide that are under 50 years old. And Times Higher Education rates us as number 15 in the world for our international outlook, putting us in the top 1% worldwide. As the only university in South Auckland, we pride ourselves on offering qualifications that are future-focused, relevant and in demand by the local community. AUT South Campus is our newest campus, and we're focused on delivering programmes that drive innovation and support the region's strong economic heart.

## Innovative and open-minded

Studying at AUT is never an isolated experience. You learn in an interactive environment where you collaborate with your classmates, debate and apply your knowledge to find innovative solutions. Our students come from a variety of backgrounds, and you find all the support, encouragement and inspiration you need. We offer some of the most comprehensive student services and support in New Zealand, but you find care and

support beyond these services – in conversations with lecturers, group work with classmates and in the many campus events. They're all reasons why 9 out of 10 AUT graduates recommend us as a great place to study.

## Workplace experience as part of your degree

Study with us and you not only learn academic knowledge related to your discipline but also gain valuable experience of the wider world. Workplace experience is at the heart of our bachelor's degrees, and thanks to our ever deepening industry connections you can choose from a vast number of host organisations for your placement.

## Research that matters

Research is a key focus for AUT, and many of our top researchers are based at the South Campus. We pride ourselves on delivering leading research relevant to the South Auckland community. For example, the Pacific Islands Families Study has been tracking the health and development of 1,400 Pacific children and their parents since the children were born at Middlemore Hospital in the year 2000. Other research projects range from fighting childhood obesity to exploring how to ensure the survival of Pacific languages in New Zealand.

For more information visit [www.aut.ac.nz/south](http://www.aut.ac.nz/south)





## Which programme is right for me?

Our South Campus is a growing and vibrant campus, offering world-class university education in the heart of South Auckland. You can study programmes at all levels – from foundation certificates to postgraduate and doctoral degrees. If you're thinking about studying with us in 2019, this publication will give you a better idea of the many ways we can help you unleash your talent and make your dreams possible.

### This is my first time studying at university

#### Certificates and diplomas

Certificates and diplomas can serve as a pathway into a bachelor's degree. For example, the Certificate in Science and Technology is a pathway into our Bachelor of Computer and Information Sciences and Bachelor of Design, and our Diploma in Paramedic Science is a great alternative for students who missed out on the popular Bachelor of Health Science in Paramedicine.

#### Bachelor's degrees

A bachelor's degree (or undergraduate degree) is the highest and most common programme of study you can enter directly from secondary school. You need University Entrance to start a bachelor's degree. For many AUT students a bachelor's degree is the first university qualification they complete. Most bachelor's degrees take three years' of full-time study.

### I already have a university qualification

#### Graduate diplomas and graduate certificates

This is a great choice if you already have a bachelor's degree or appropriate professional experience and want to specialise in another discipline without having to complete a full three-year degree. These programmes are at the same level of study as a bachelor's degree. A graduate diploma usually takes one year of full-time study to complete, and a graduate certificate one semester.

#### Postgraduate study

This is the highest level of study at AUT. To enrol in a postgraduate programme you generally need to have completed a bachelor's degree in a related field. Some postgraduate programmes are made up of papers (courses) you need to complete, while others include the opportunity to complete research in an area of your interest. The Master of Philosophy and Doctor of Philosophy are research-only degrees – ideal if you want to solely focus on your research project and not complete any papers. Postgraduate study ranges from one semester of full-time study for a postgraduate certificate to three years for a doctorate.



3

1 The South Campus offers a modern and vibrant environment 2 Our friendly staff at the South Campus Student Hub 3 UniPrep, AUT's university preparation programme, is your opportunity to take a hold of your future and get ready for university

## Zero fees te reo classes

Study with us and learn te reo Māori in a dynamic, interactive and progressive way. Our innovative short courses help you develop a full understanding of the language and the culture that surrounds it, using digital and traditional approaches.

There are no tuition fees for the beginner Māori papers offered at the AUT South Campus and you may be able to credit 15 points towards your degree. Previous knowledge of te reo Māori is not required.

Classes are interactive and supportive and you can use our app and other digital learning tools to practise your skills.

For more information visit [www.aut.ac.nz/tap](http://www.aut.ac.nz/tap)

## UniPrep

If you're not sure what full-time university study will be like or want a bit of help to succeed at uni, UniPrep's a great place to start. It's completely free, but places are limited.

To attend, you need to be finishing school this year and considering degree-level study at university.

You'll need to be available to attend the South Campus for full-time study during several weeks in January and February next year.

To find out more about UniPrep visit [www.aut.ac.nz/uniprep](http://www.aut.ac.nz/uniprep)



## QUICK FACTS

Level: 9

Points: 120

Duration: 1 year F/T, 3 years P/T

Starts: Any time



### Iain Cleland

Head Strength and Conditioning Coach,  
Section Paloise Rugby, Top 14 France  
Master of Philosophy

"The knowledge and experience of AUT sport and recreation staff is great. My thesis was on sleep extension and recovery in rugby union players. I decided to look into this as I feel this is an area that doesn't yet have a massive amount of research and needs further investigation. I'm lucky enough to have a job that allows me to see the direct impact of some of the research and reading I've done throughout my studies. I also appreciated that the lecturers take into account students' work and life commitments, for example when my son was born. My wife and I are from Scotland and had no family in New Zealand, and AUT fortunately granted me a leave of absence, allowing me to put the academic side of things on hold for a while."

## Master of Philosophy

MPhil | AK3720

The Master of Philosophy (MPhil) is a one-year, research-only master's degree. It's a great opportunity for you to explore a research topic of an applied or professional nature under the supervision of staff.

The Master of Philosophy enables you to expand your research capabilities by focusing on a particular area of interest. It can provide a pathway to more advanced research at doctoral level.

### Entry requirements

#### Minimum entry requirements

Must have completed one of the following with the equivalent of a B grade average or higher:

- Four-year bachelor's degree OR
- Bachelor's honours degree OR
- Bachelor's degree and postgraduate diploma OR
- Bachelor's degree and at least three years of experience relevant to the proposed programme of research

#### Other requirements

May be required to complete an approved research methods paper.

#### English language requirements

IELTS (Academic) 6.5 overall with a minimum score of 6.0 in each band

### What this qualification covers

You complete an original thesis during this year of study. AUT staff are available to supervise MPhil research on a wide range of topics.

### Preparing a research proposal

Prospective MPhil applicants are required to prepare a formal research proposal, specifying the field of research and a general research question you wish to investigate. For more information visit [www.aut.ac.nz](http://www.aut.ac.nz)

### Career opportunities

It is expected that as a graduate with a Master of Philosophy you will have gained the necessary skills and qualifications to follow an academic or research career leading to a PhD. Alternatively, your research topic may lead you to a position of expertise in your chosen field.



For more details visit [www.aut.ac.nz](http://www.aut.ac.nz)



# Doctor of Philosophy

PhD | AK3518

The Doctor of Philosophy (PhD) is the University's highest qualification. The degree is undertaken by research only and leads to advanced academic and theoretical knowledge in a specialist area.

The PhD is suitable for students who want to pursue an academic or research career, or a senior position in the public or private sector. Doctoral studies present you with the opportunity to generate new ideas that can benefit business and society. You will make a significant original contribution to knowledge and understanding in your field of study and meet recognised international standards for your work.

AUT's academic supervisors are recognised world-class researchers in their fields who have the expert knowledge to guide and advise you throughout your PhD.

## Entry requirements

### Minimum entry requirements

Must normally have completed the following in a discipline appropriate to the proposed research:

- Master's degree with honours OR
- Bachelor's degree with honours (equivalent to four years of study)

The degree must normally have been gained at the standard of first class or second class (first division) honours from this University or a recognised equivalent.

The degree should include advanced learning in research, execution of a research project and a written report on the research.

### Other requirements

Acceptance is subject to the availability of staff for supervision, prior research preparation and appropriate facilities.

### English language requirements

#### Engineering, Computer and Mathematical Sciences:

- IELTS (Academic) 6.5 overall with 6.5 in Writing and no band less than 6.0

#### All other study areas

- IELTS (Academic) 6.5 overall with 7.0 in Writing and no band less than 6.0

## Preparing a research proposal

Prospective PhD applicants are required to prepare a formal research proposal, specifying the field of research and a general research question you wish to investigate. For more information visit [www.aut.ac.nz](http://www.aut.ac.nz)

## QUICK FACTS

Level:	10
Points:	360
Duration:	3 to 6 years
Starts:	Any time



### Qorinah Estiningtyas Sakilah Adnani

Doctor of Philosophy candidate

"I'm a registered midwife and have worked in midwifery education for more than twelve years. I believe it's vital that Indonesia produces research that explores how to strengthen its midwifery education and the quality of graduates. That's one of the elements contributing to improved maternal and neonatal health. My research findings will help to deepen our understanding of how to improve midwifery education in Indonesia. The midwifery department at the AUT South Campus is known as a world-class provider of midwifery education. AUT is also the home of the Centre for Midwifery and Women's Health Research, and my supervisors are the people in charge of this centre. It just made sense to complete my PhD at AUT. Both of my supervisors, Associate Professor Judith McAra-Couper and Dr Andrea Gilkison, are fantastic. I feel privileged to be accompanied by such incredible and enthusiastic people on my journey through the PhD."



For more details visit [www.aut.ac.nz](http://www.aut.ac.nz)

## QUICK FACTS

Level: 7

Points: 360

Duration: 3 years F/T, P/T available

Starts: 25 Feb 2019<sup>1</sup>



### Siobhon Joe

Brand Designer, Red Antler, New York  
Bachelor of Design in Communication Design

"I decided to attend AUT as it was the leading design school in New Zealand, and offered an environment of creativity and exploration. I chose to study a Bachelor of Design as I recognised the importance of developing my knowledge and skills of design, so I could gain real-life experiences for my future career. One of the highlights for me was developing close connections with people from different walks of life who all shared a common interest in design. I enjoyed being introduced to fresh ideas and perspectives, and seeing how they influenced and shaped me as a designer. After graduating at the end of last year, I'm now working as a brand designer for Red Antler in New York. I got this sought-after internship through the AUT Internz International Scholarship Programme."

# Bachelor of Design Communication Design

BDes | AK3619

Communication design focuses on developing and visually communicating ideas and messages. You examine historical and modern concepts of visual design through projects in a number of industry-relevant areas. You work closely with lecturers and professional designers, and may work on real-life design projects.

## Entry requirements

### Minimum entry requirements

- University Entrance or equivalent
- Portfolio of artwork<sup>2</sup>

### Selection criteria

Interview may be required

### Preferred New Zealand school subjects

Classical Studies, Design (Practical Art), English, Geography, History, History of Art, Media Studies.

### Don't meet the entry requirements?

Consider starting with our Certificate in Science and Technology

### English language requirements

IELTS (Academic) 6.5 overall with all bands 6.0 or higher; or equivalent

## What this major covers<sup>3</sup>

Visual communication design brings together technology, communication design and moving image. It can be described as a creative activity that combines graphic design, typography, illustration and photography. The skills you develop provide a great foundation for a career in visual communication design and moving image.

Explore the latest technology and design approaches, including AR & VR (augmented reality/virtual reality), smart phone devices, 360 degree photography, e-publishing, visual identity development, information and environmental graphics, music videos, social awareness campaigns, and digital animations.

You also choose one minor:

- 3D Visualisation
- Cinematic Arts
- Contemporary Pacific
- Creative Entrepreneurship
- Creative Sound Design
- Design for Sustainability
- Digital Fabrication
- Experimental Surface Design
- Game and Play Design
- Motion Capture
- Photographic Practice
- Temporary Practices/Temporary Publics
- Urban Practices
- Visualising Information

### Year 1

The core Communication Design Studio I and II (Visual Language) papers cover line, tone, composition and colour, layout design, typography, drawing, and photography. Design Research I (Design History) investigates the ideas that have shaped design as a profession. You also study Materials and Media I and II (Design Fundamentals), which covers principles of graphic design for both print and screen applications.

### Year 2

Your core studio papers focus on your chosen pathway. All students also study Design Research II (Design Theory), Materials and Media III and two minor papers.

### Year 3

You further your understanding of communication design through Design Studio V and VI. The papers Design Research III and IV (Design Context and Professional Practice) develop your ability to apply your critical thinking and write formal reports about your own work. You also study one minor paper.

## Career opportunities

- Advertising creative
- Communication or graphic designer
- Magazine art director
- Multimedia or web designer
- Photographer

AUT encourages early application. Places are limited.

1. Acceptance into this programme is based on academic achievement, the work submitted in a portfolio, and if required, an interview. Although we will continue to accept applications until all places are filled (up to the start of Semester 1, 2019), those who submit their full applications, including a portfolio of work, by 28 September 2018 will be prioritised. Applications received after this date will only be considered if there are places available and upon meeting all programme entry requirements.

2. For portfolio guidelines, see [www.aut.ac.nz/artdesign](http://www.aut.ac.nz/artdesign)

3. To ensure our curriculum remains current, papers may change from year to year.



### Finn Clark

Product Designer, Xero  
Bachelor of Design in  
Communication Design

"Design was a field I excelled in at high school, and I knew that a communication design degree would give me the best opportunity to find a path that fits me. AUT is known for having one of the best graphic design courses in New Zealand. I applied knowing this and fortunately was accepted into the degree. What I found really amazing about AUT was that my degree enabled me to explore many unique avenues of design, from calligraphy to web design.

"After I graduated at the end of 2015, I travelled to New York to intern at branding agency Red Antler through the AUT Internz International Scholarship Programme. Living in New York City gave me so much perspective on my career – I met so many amazing people and learned more than I could have ever imagined. The highlight for me was working in a company that is truly at the top of their game in terms of the quality of work they produce.

"As a product designer for Xero, I enjoy the challenge of creating a visually appealing piece of design that functions in the most natural and uncomplicated manner. I also love working with teams of people to create the best possible user experience."



For more details visit [www.aut.ac.nz/artdesign](http://www.aut.ac.nz/artdesign)



## QUICK FACTS

Level: 4

Points: 120

Duration: 1 year F/T

Starts: 25 Feb & 15 July 2019

## Certificate in Science and Technology

CertScTech | AK1311

The one-year Certificate in Science and Technology gives you an introduction to the main areas involved in studying design, engineering, or computer and mathematical sciences. It's a great programme to gain a taste of university life and develop the knowledge and study skills for further study at bachelor's level.

### Entry requirements

#### Minimum entry requirements

- Completion of Year 12
- **NCEA:** 48 level 2 credits or higher, plus eight level 1 credits in at least one subject from Classical Studies, Drama, English, Geography, Health Education, History, History of Art, Media Studies, Social Studies, Te Re Māori or Te Reo Rangatira
- **CIE:** 60 points on the UCAS Tariff

#### Selection criteria

- Literacy and numeracy tests
- Interview may be required
- The course of study of every applicant is subject to the approval of the programme leader.
- Preference will be given to applicants with:  
**NCEA:** 12 credits at level 2 or higher in Mathematics, and eight credits at level 2 or higher in at least one language rich subject.

#### English language requirements

IELTS (Academic) 5.5 overall with all bands 5.0 or higher; or equivalent

### What this qualification covers

- Academic Literacies

Plus select seven papers from:

- |  |                                     |
|--|-------------------------------------|
| • Foundation Design Technologies         | • Foundation Mathematics            |
| • Foundation Design Principles           | • Foundation Mathematics and Design |
| • Foundation Calculus                    | • Foundation Algebra                |
| • Foundation Programming                 | • Foundation Physics A              |
| • Foundation Problem Solving             | • Foundation Physics B              |
| • Tertiary English and Critical Thinking | • Foundation Statistics             |
|  | • Introduction to Engineering       |

Papers are selected subject to the approval of the programme leader.

### Further study

Students who complete this programme can apply for bachelor's degrees in design, engineering, computer and mathematical sciences.



For more details visit [www.aut.ac.nz](http://www.aut.ac.nz)

# Bachelor of Business

BBus | AK3693

Gain a solid understanding of how businesses operate and the key issues you will face as a future decision-maker in business. Your study is informed by the latest business research and relevant industry examples, and your final year includes invaluable workplace experience in an organisation of your choice or an applied project. You learn from leading academics at an internationally accredited business school – we're among an elite group of 5% of business schools worldwide accredited by AACSB International.

## Entry requirements

### Minimum entry requirements

University Entrance or equivalent

### Preferred New Zealand school subjects

All approved NCEA level 2 and 3 language rich subjects, Business, Mathematics and Statistics subjects are useful.

### Don't meet the entry requirements?

Consider starting with our Certificate in Business.

### English language requirements

IELTS (Academic) 6.0 overall with all bands 5.5 or higher; or equivalent

## What this qualification covers

In this degree you can focus on:

- Accounting
- Business Information Systems
- Economics
- Finance
- Human Resource Management and Employment Relations
- International Business
- Management
- Market Insights: Marketing, Advertising, Retailing, Sales

A review and refresh of the Bachelor of Business curriculum is currently underway to ensure this degree continues to give you the best foundation for your future career. Changes are expected to take effect from Semester 1, 2019. More details will be communicated as soon as they're available.

Currently you can complete your entire degree at the AUT South Campus in the following areas: Accounting, Human Resource Management and Employment Relations, and Management.

For the other Bachelor of Business subject areas you may be able to study your first semester or first year at the South Campus (subject to availability).

## QUICK FACTS

Level: 7

Points: 360

Duration: 3 years F/T, P/T available

Starts: 25 Feb & 15 July 2019



### Hana Velio

Graduate Accountant, Genesis Energy  
Bachelor of Business in Accounting

"I first became interested in accounting when I decided to take it up as a subject in high school. I loved that my teacher took the time to explain things thoroughly, and made sure that everyone in the class succeeded. I would highly recommend AUT's business degree to others. In fact, I sometimes find myself telling others, especially kids who are fresh out of high school, how great AUT's Bachelor of Business is. The staff provided us with all the necessary information and support to succeed. The people I met and how they influenced my journey are what stood out most about my studies. I also appreciated the knowledge I gained, not just from my lectures but from the whole experience of being a university student."



### Monique Butler

*Ngāti Maniapoto*

Discover Graduate, Vodafone

New Zealand

Bachelor of Business in Human  
Resource Management and Employment  
Relations & Management

“My final-year workplace experience was the main highlight of my time at AUT. I was lucky enough to be offered an intern position within Vodafone New Zealand’s human resource team. The networking opportunities during my work placement were vital, and I was fortunate to be selected for Vodafone’s 2016 Discover Graduate Programme. There were 1,500 extremely talented candidates for the 40 positions. Without the confidence my AUT business degree has given me, I don’t believe I would have been able to perform to such professional standards and further my career in such a rich environment.”

### Employer comment

“We were fortunate enough to have Monique join us as an HR intern during her workplace experience. She really made a lasting impression on the team. She was committed, a quick learner and demonstrated the behaviours that ensure success at Vodafone, including customer focus, ambition, innovation and great people skills. Monique is now part of our 2016 graduate programme, which is a two-year programme to build our leaders of the future. Having some experience of Vodafone during the work placement certainly helped as we already had a view on her capability and potential.”

**Anna McHardy, Graduate Manager,  
Vodafone New Zealand**

## Bachelor of Business

Continued

### Part 1

You take five core papers that cover fundamental business concepts:

- Business in Context
- Management and Organisation
- Economic Principles 1
- Accounting for Decision Making
- Quantitative Methods for Business

You also complete two of the following papers (or papers from any other AUT degree, depending on your major):

- Business Information Systems
- Design for Business and Society
- Economic Principles 2
- Introduction to Entrepreneurship and Innovation
- Introduction to Finance
- Law for New Zealand Business
- Leadership for Sustainable Enterprise
- Marketing, Advertising, Retailing, Sales: Positioning in an Omni Environment

### Part 2

You develop in-depth skills in an area of business, as well as papers from a range of other disciplines, either within business or from another AUT degree.

### Part 3

Workplace experience is the final part of your degree and takes place in your final semester. You can choose to work in an organisation of your choice or complete an applied project, bringing together your learning and gaining valuable experience.

## Career opportunities

### Accounting

- Chartered accountant
- Chief financial officer
- Corporate accountant
- Auditor
- Management accountant
- Taxation consultant



### Business Information Systems

- Business analyst/process analyst
- Business database administrator
- Consultant
- eBusiness manager
- Information systems manager
- Project manager

### Economics

- Acquisition manager
- Business risk auditor
- Financial markets analyst
- Investment banker
- Service designer
- Researcher in a consulting firm or non-profit organisation
- Strategic planner, analyst or policy advisor in a local council

### Finance

- Commercial banker
- Commodities trader
- Corporate finance manager
- Fund manager
- Finance manager
- Investment banker
- Securities analyst
- Stock broker

### Human Resource Management and Employment Relations

- Employment relations specialist
- Human resource manager
- Industry training advisor
- Talent manager
- Health and safety manager



#### Dane Deller

Content Manager, Moloney & Moloney Ltd  
Bachelor of Business in Management and Marketing

"I liked the idea of having a degree that was flexible, and could lead to a wide range of jobs and opportunities. That's why I decided to study business. AUT is modern and it teaches ideas that are current to the changing business environment. The case studies for your assignments cover issues the business world is currently facing. That's really important for learning how to keep up with global and local trends. I did my final-year workplace experience for The Warehouse Group where I worked in the community and environment team. Working in the main support office with over 1,000 team members was definitely an exciting new experience."

#### Employer comment

"We employed Dane based on cultural fit with our wider team, the initiative he displays, and the critical thinking and confidence he brings to the table. We were looking for someone who could manage the end-to-end brand strategy and creative for businesses looking to improve their reputation online, and to work alongside our clients to identify and leverage the opportunity in social channels for their brands. Dane's ability to apply his degree to the work we do is highly valuable to our business. The knowledge he has of the marketing discipline is constantly adapted to the deliverables for our varied clients."

**Jessica Moloney, CEO & Founder,  
Moloney & Moloney Ltd**



### Tri Huynh

Digital Planner, Mediaco  
Bachelor of Business in  
Management and Marketing

"In today's world, digital is the 'new normal' for marketing and advertising activities, and there are many ways to use this channel to achieve business goals. As a digital planner, I'm responsible for researching, planning and optimising advertising campaigns on digital channels, helping our clients meet their business objectives and build their brands. I love it because of the flexibility and the effectiveness of the channel.

"I've always been curious about why people decide to buy one brand but not another, regardless of the similarity of their products. I decided to study marketing and management to learn how to build brand value, and explore the consumer perception and company culture surrounding brands.

"At AUT, we had many group projects where we could apply the theory to the real world. For one project, we had to build our own business and then test if we could make any profit from our business idea. Our group decided to create an advertising agency, and I loved being able to build this agency from scratch and then run it, all within only six weeks. I loved this experience so much that my first job after university was in advertising, and I've now been working in the marketing and advertising industry for more than eight years."

## Bachelor of Business

Continued

### International Business

- Export manager
- International account manager
- International project manager
- International sales representative
- Management consultant
- National or regional trade development advisor
- Overseas buyer
- Policy and research advisor
- Regional marketing manager

### Management

- Manager or executive
- Business researcher
- Functional manager
- Management consultant
- Project manager
- Small business

### Market Insights: Marketing, Advertising, Retailing, Sales

- Market insights analyst
- Customer experience and insights researcher
- Sales account manager
- Advertising agency planner
- Brand manager
- Marketing co-ordinator
- Business development manager
- Product buyer
- Customer relationship manager

AUT encourages early application. Places are limited.



For more details visit [www.aut.ac.nz/business](http://www.aut.ac.nz/business)

# Certificate in Business

CertBus | AK4740

**Don't have University Entrance?** The one-semester Certificate in Business gives you an introduction to the main areas involved in studying business. This programme introduces you to a range of business and academic skills, as well as the literacy and numeracy skills you need to study at degree level. After successfully completing the certificate you can apply for the Bachelor of Business or Bachelor of Laws.

## Entry requirements

### Minimum entry requirements

Completion of Year 13 or equivalent

### Selection criteria

Preference will be given to applicants who have at least 50 NCEA level 3 credits and have met the literacy and numeracy requirements for University Entrance or equivalent

### English language requirements

IELTS (Academic) 5.5 overall with all bands 5.0 or higher; or equivalent

## What this qualification covers

The certificate consists of the Introductory Business Studies paper, which is worth 60 points. You will learn about core business concepts and gain an introduction to a range of academic skills, preparing you well for study at degree level.

## Further study

- Bachelor of Business
- Other bachelor's degrees at AUT (provided you meet the entry requirements)

AUT encourages early application. Places are limited.

## QUICK FACTS

Level: 4

Points: 60

Duration: ½ year F/T

Starts: 25 Feb & 15 July 2019



### David Firisua Jr

Student, Bachelor of Business in Accounting and Economics  
Certificate in Business

"I had been in the workplace for a decade, including spending seven years in the sports industry, working with FIFA and the Oceania Football Confederation. I had also just become a father, and was at a point where I felt that I had to make a change in my career and shape my world the way I wanted it to be. I was attracted to AUT's Certificate in Business as it was the best fit for my circumstances, and would introduce me to several areas of interest including management, economics, accounting and marketing. I was impressed by the content the Certificate in Business covers, but even more by the experienced and passionate staff. Studying at AUT has given me the knowhow and confidence to start my own business while I'm still studying."



For more details visit [www.aut.ac.nz/business](http://www.aut.ac.nz/business)



## QUICK FACTS

Level: 5

Points: 60

Duration: ½ year F/T

Starts: 25 Feb & 15 July 2019

## Certificate in Business Studies

CertBusSt | AK1007

**Do you have some work experience but don't yet have a bachelor's degree? With the flexibility of choosing four papers from within the Bachelor of Business you can gain valuable knowledge in a short period of time. If you want to continue studying business you can cross-credit your points into the Bachelor of Business degree.**

### Entry requirements

#### Minimum entry requirements

University Entrance or equivalent

#### Preferred New Zealand school subjects

All approved NCEA level 2 and 3 language rich subjects, Business, Mathematics and Statistics subjects are useful

#### English language requirements

IELTS (Academic) 6.0 overall with all bands 5.5 or higher; or equivalent

### What this qualification covers

You study 60 points from papers in the Bachelor of Business. You can gain knowledge and skills in core business disciplines to complement your professional career or as a stepping-stone to further study.

### Further study

- Bachelor of Business

AUT encourages early application. Places are limited.



For more details visit [www.aut.ac.nz/business](http://www.aut.ac.nz/business)

# Graduate Diploma in Business

GradDipBus | AK3709

# Graduate Certificate in Business

GradCertBus | AK3753

Do you have a bachelor's degree and are planning to move into postgraduate study? The Graduate Diploma in Business and the Graduate Certificate in Business are great qualifications if you want to prepare yourself for further study or advance your career through increased knowledge in specific areas within business. They're designed for students who want to move into postgraduate business study and need a foundation in business concepts. They're also for people who have an undergraduate degree other than business and want to develop skills for a career in business.

## Entry requirements

### Minimum entry requirements

- A bachelor's degree OR
- Relevant professional qualification or experience approved by the Dean (or representative) to be equivalent to a bachelor's degree

### English language requirements

IELTS (Academic) 6.5 overall with all bands 6.0 or higher; or equivalent

## What these qualifications cover

You gain an understanding of business concepts in specific business disciplines of your choice. You can choose your papers from those available in the Bachelor of Business<sup>1</sup>. You can tailor your study to your needs and career goals. Not all papers are offered at the South Campus, and depending on your chosen papers you may have to study at the City Campus.

### Graduate Diploma in Business

You take eight 15-point papers, of which at least five must be level 7.

### Graduate Certificate in Business

You take four 15-point papers, of which at least three must be level 7.

AUT encourages early application. Places are limited.

1. Subject to having met any required prerequisites.

## Graduate Diploma in Business

### QUICK FACTS

Level:	7
Points:	120
Duration:	1 year F/T, equivalent P/T
Starts:	25 Feb & 15 July 2019

## Graduate Certificate in Business

### QUICK FACTS

Level:	7
Points:	60
Duration:	½ year F/T, equivalent P/T
Starts:	25 Feb & 15 July 2019



For more details visit [www.aut.ac.nz/business](http://www.aut.ac.nz/business)

## QUICK FACTS

Level: 7

Points: 360

Duration: 3 years F/T, 6 years P/T

Starts: 25 Feb &amp; 15 July 2019

**Ashton Johnston**

Year 7 and 8 Teacher, Mangere East  
Primary School  
Bachelor of Education  
(Primary Pasifika)

“When I was looking at where to study, AUT stood out for its smaller, interactive classes as opposed to other tertiary institutes where you have a small desk space in a lecture hall. I knew I’d be able to focus much easier instead of constantly feeling confined. When I came to AUT for my selection interview, the lecturers were genuine and I immediately felt comfortable asking questions and being honest. I truly think AUT’s academics are awesome – they remember your name, they genuinely care and they know their stuff. I decided to specialise in Pasifika teaching as there is a big focus on relationships. Learning can’t happen if the students can’t relate, and as a teacher I want to be able to relate to all my students.”

# Bachelor of Education ([Specialty] Teaching)

BEd([Specialty]Tchg) | AK3594

Teachers play an essential role in motivating, inspiring and educating the people who will go on to shape the future of our society. At AUT, you can prepare yourself for a career in early childhood or primary/intermediate education, and learn from staff who are passionate about teaching. Our education programmes include 22 weeks of teaching placements, so you can get first-hand experience in the workplace and graduate with confidence in your skills. For those interested in Pasifika primary or early childhood teaching, there are papers in Year 1 and 2 that include Pasifika tutorials. Year 3 includes option papers for the Pasifika specialty.

## Entry requirements

### Minimum entry requirements

- University Entrance or equivalent
- Must meet Education Council of Aotearoa New Zealand requirements
- Police clearance
- Personal declaration
- Referee reports
- Applicants must be at least 17 years of age
- Must meet Vulnerable Children Act (VCA Act) requirements

### Selection criteria

Interview, numeracy and literacy competency assessment, and CV.

### Preferred New Zealand school subjects

Language rich subjects from AUT’s subject list (see page 64), art and design subjects, languages, mathematics subjects, Dance, Digital Technologies, Drama, Health Education, Physical Education

### English language requirements

IELTS (academic) 7.0 overall with all bands 7.0 or higher

## What this qualification covers

In your first year you choose to study teaching for either:

- Early childhood centres or
- Primary and intermediate schools

At the end of Year 1 you choose to continue with mainstream teaching or specialise in Pasifika teaching.

## Early Childhood Teaching

If you study early childhood teaching you develop the character, understanding and skills to be a teacher of children in the 0–5 age range. When you graduate, you will be eligible to apply for registration with the Education Council of Aotearoa New Zealand.

## Year 1

You complete 120 points (8 papers) across the following areas:

### Professional practice

- Workplace education
- Role of the teacher
- Relationship building
- Effective communication
- Ethical practice
- Regulatory framework for early childhood

### Teaching of the curriculum

- Infants and toddlers
- The young child
- Te Whāriki<sup>1</sup>

### Studies in education

- History of New Zealand education
- Human development
- Sociology
- Te reo Māori

## Year 2

You complete 120 points (8 papers) across the following areas:

### Professional practice

- Workplace experience
- Fostering social relationships
- Intentional teaching
- Teaching with social justice
- Assessments
- Learning environments
- Health and safety requirements
- Bicultural practice

### Teaching of the curriculum

- Innovative learning environments
- Language arts, health and PE
- Mathematics, science and technology
- Play
- Working in teams

### Studies in education

- Educational ways of thinking
- Philosophies and application of theory into practice



### Leanne Mato

*Ngāti Porou, Whānau a Apanui*  
Teacher, Northcote Central  
Kindergarten  
Bachelor of Education  
(Early Childhood Teaching)

"We returned to New Zealand with our two young children after living in the UK for 12 years. I had helped at their nursery school and found I loved it. To help become the best teacher I could be, I decided to return to university to complete a teaching degree.

"During my three-year degree I completed five teaching practicums, including a placement at Northcote Central Kindergarten where I now work. The AUT lecturers were amazing – so supportive, inspiring and knowledgeable. I also made some lifelong friends during my studies and learned not just what it takes to be a great teacher but also a lot about myself.

"I now teach a group of forty children between the ages of three and five, and working with the children is what I love most about my role. I'm also lucky enough to work with a fun, committed team of teachers who share similar philosophies. I would say that every paper I took at AUT is relevant to my job and has meant that I've been able to hit the ground running."





### Ezra Feau

Year 5 and 6 Teacher,  
Puhinui School  
Bachelor of Education  
(Primary Pasifika)

"I love it when I overhear a student teaching someone else what I've just taught them in class. That's reciprocal learning and when it flows in the class it really is something special. Everyone can feed off one another and we're all helping one another learn, like a big aiga (family). It's such a rewarding feeling.

"I had heard that at AUT you have more opportunities to talk to your lecturers, but it was much more than that. We had a test before we started our degree and Ross Bernay – the head of the teacher education department – stood at the door, shook our hand and welcomed us in. He addressed me by name and got to know me. It showed that they actually cared who I was.

"As part of my studies I completed six teaching practicums. We had to have one placement in each year group, and ensure that our placements covered a high decile, a middle decile and a low decile school. It gives you such a range of teaching experiences. It's great that AUT gives you the opportunity to choose where you want to go for your last placement. This was very important for me as I wanted to go back to Puhinui to measure how far I had come from my first placement."

## Bachelor of Education ([Specialty] Teaching)

Continued

### Year 3

You will continue your studies with 120 points (8 papers) in the following areas and have options to choose topics you wish to pursue in greater depth:

- Professional practice
- Studies in education (inclusive education)
- Mainstream or Pasifika specialty

### Primary Teaching

Turn your passion for educating children between 5 and 12 years into a career in primary or intermediate teaching. As a graduate of this programme you'll have the understanding, skills and academic requirements to be a primary teacher. You'll be eligible to apply for provisional registration with the Education Council of Aotearoa New Zealand.

### Year 1

You complete 120 points (8 papers) across the following areas:

#### Professional practice

- Work experience
- Role of teachers
- Professional ethics
- Asking appropriate questions for learning
- Motivating and engaging children

#### Teaching the curriculum

- English
- Mathematics I
- Science

#### Studies in education

- History of New Zealand education
- Human development
- Sociology
- Te reo Māori

## Year 2

You complete 120 papers (8 papers) across the following areas:

### Professional practice

- Work experience
- Your personal teacher identity
- Working with challenging behaviour
- Instructional strategies
- Resilience
- Relationships
- Risk management
- Individual and professional identity

### Teaching the curriculum

- Health and physical education
- Mathematics II
- Reading
- Social sciences
- Technology
- Innovative learning environments

### Studies in education

- Educational ways of thinking
- Philosophies and application of theory into practice

## Year 3

You will continue your studies with 120 points (8 papers) in the following areas and have options to choose topics you wish to pursue in greater depth:

- Professional practice
- Studies in education (inclusive education)
- Mainstream or Pasifika specialty

AUT encourages early application. Places are limited.



### Lucia Dawbin

Teacher, St Leo's Catholic School  
Bachelor of Education  
(Primary Teaching)

"I love that every day is a bit different. There's a lot of room for creativity in my role, and it's exciting to come up with different ways to engage the children in their learning. I also enjoy collaborating with other teachers and learning from them."

"My studies at AUT were essential in developing my knowledge of key aspects of being a teacher, including assessments, planning, and learning progression and development. I now use these skills to organise my day in the classroom and to plan for the whole week, term or even year."

"The teaching practicums were key as nothing you read quite prepares you for what it's really like in the classroom. It was also a great opportunity to see how schools are run. I use the skills I developed through my teaching practicums daily now – from behaviour management strategies to lesson planning and classroom organisation."

"I had heard positive things about AUT from friends and family. You always felt supported – either by others in the class or by your lecturers."

1. Also known as Ministry of Education Early Childhood Education Curriculum



## QUICK FACTS

Level: 7

Points: 360

Duration: 3 years F/T, P/T available

Starts: 25 Feb & 15 July 2019

# Bachelor of Arts in Education

BA | AK3704

Interested in learning and how it relates to culture, community, social media and social justice? We've all been to school and probably all have a view on education. The Bachelor of Arts in Education re-examines these views.

It's a great pathway for a number of careers in fields involved in education policy or strategic development, or for further study to become a teacher. Because this major is part of the Bachelor of Arts, it's easy to combine it with many other aspects of society and culture. Choose from areas as diverse as education, social sciences, psychology, international studies, Māori development, event management or languages. You can build your degree in a way that suits you – study either one or two majors, select from a wide range of minors or perhaps add elective papers from another area of study.

## Entry requirements

### Minimum entry requirements

University Entrance or equivalent

### Preferred New Zealand school subjects

All subjects are useful, in particular Classical Studies, English, Geography, History, History of Art, Media Studies and other languages.

### English language requirements

IELTS (Academic) 6.0 overall with all bands 5.5 or higher; or equivalent

## What this qualification covers

### Core papers

Throughout your degree you take core Bachelor of Arts papers:

- Academic Communication: Conventions and Expectations
- Culture and Society
- Knowledge and Inquiry
- Work Integrated Learning

You usually complete two or three core papers in Year 1, plus papers for your major (usually two or three) and other papers of interest. In your second year you complete the other one or two core papers, along with more major papers. Your final semester includes valuable workplace experience (through the Work Integrated Learning paper) in an organisation related to your major.

### Education papers

The Education major papers are organised into two strands.

Sociological focus:

- Critical Questions in Education
- Education, Resistance and Social Justice
- Exploring the Horizons in Education

You examine aspects of education in the past and how they relate to today's education issues. You also consider the future of education and how the way we learn in the future could be very different from today.

Cultural focus:

- Places and Learning
- Learning, Diversity and Culture
- Educational Psychology
- Contemporary Philosophies of Education
- Alternatives in Education

You consider how place affects who we are and what we learn. You also examine learning in different cultures and communities, learning through social media and the 'big picture' of education.

## Career opportunities

The skills you develop in this major are valuable for a range of careers, including social development work, youth and community work, communications, human resources, the arts, training and mentoring and other education-related work in government and non-governmental organisations. It's also good preparation for further study, which could lead to teacher registration.

## Course planner

The Bachelor of Arts is made up of 360 points. It is made up of the following components: core papers, a major and electives. You can either choose a single or a double major. The size of the second major may impact on the number of elective papers you take.

SINGLE MAJOR						360 points		
Core papers 45 points	+	Education major 120 points	+	Minor 60 points	+	Electives 105 points	+	Work Integrated Learning 30 points

DOUBLE MAJOR						360 points		
Core papers 45 points	+	Education major 120 points	+	Second major 120 points	+	Electives 45 points	+	Work Integrated Learning 30 points



### Qurrat Ul Ain Memon

3rd-year student,  
Bachelor of Arts in Education

"I've always been interested in education, and I chose this degree because it opens the doors to many opportunities to seek knowledge and obtain a quality education. I'm now in my third year of studies, and it has dawned on me that I'm passionate about becoming a teacher.

"Through my studies I've realised that I really want to contribute to society and help children overcome challenging social conditions. It would be a true blessing for me to be a part of children's developmental milestones, and to be able to make a difference in their lives. To help me achieve this dream, I've decided to pursue the Master of Teaching and Learning once I graduate to become a teacher.

"I chose AUT for its impressive reputation as a young university. I liked that through the Bachelor of Arts in Education I can learn about different educational theories and philosophies, and I loved being able to include a minor in social sciences as part of my degree. This has added immensely to my knowledge, as I learned about numerous Greek philosophies and global issues.

"Studying at AUT has enabled me to think critically and outside the box, and I feel that the freedom to select electives from a range of disciplines has truly diversified my knowledge."



For more details visit [www.aut.ac.nz/education](http://www.aut.ac.nz/education)



## QUICK FACTS

Level: 7

Points: 120

Duration: 1 year F/T

Starts: 25 Feb 2019



### Dave Williams

Head of the Outdoor Education Department,  
Botany Downs Secondary College  
Graduate Diploma in Secondary Teaching  
Bachelor of Sport and Recreation in Outdoor  
Education

"My goal is to become the first person to climb the highest mountain in each of the seven continents, as measured from sea level. So far, I've climbed four of the seven highest peaks. A personal highlight for me was running ten marathons in ten days before climbing to the summit of Mt Kilimanjaro. I love sharing my passion for the outdoors with my students. What I enjoy most about my role is being able to build relationships using outdoor pursuits as the vehicle. My career highlight so far was reaching Mt Everest Base camp with 23 secondary students. All of the skills I learned at AUT have helped mature me into the facilitator I am today, which has enabled me to transfer my knowledge and passion onto others."

# Graduate Diploma in Secondary Teaching

GradDipSecTchg | AK3515

Want to teach your favourite secondary school subjects to a new generation of New Zealanders, and embark on a career that will inspire and make a difference to young people's lives? The Graduate Diploma in Secondary Teaching will give you practical techniques based on sound research to teach your curriculum subject(s) in secondary schools. This is a professional qualification with strong emphasis on practical experience and applied learning.

## Entry requirements

### Minimum entry requirements

- A bachelor's degree in a subject considered relevant for teaching in a New Zealand secondary school
- Attend a selection interview
- Meet the Education Council of Aotearoa New Zealand requirements
- Police clearance
- Personal declaration
- Referee reports
- Numeracy and literacy assessment

### English language requirements

IELTS (Academic) 7.0 overall with all bands 7.0 or higher; or equivalent

## What this qualification covers

The programme is made up of five taught papers, and 15 weeks of practicum placements in a secondary school. During campus-based papers students also attend curriculum studies tutorials in their teaching subjects, run by practising teachers on allocated afternoons.

## Papers

- Towards a Personal Philosophy of Teaching and Learning
- Provocations in Educational Thinking
- Curriculum Theory and Practice
- Assessment Theory and Practice
- Practicum 1
- Practicum 2
- The Emerging Professional

## Career opportunities

Student teachers who successfully complete the Graduate Diploma in Secondary Teaching are eligible to seek registration as a teacher and apply for teaching positions in secondary schools.

AUT encourages early application. Places are limited.



### Carla Boniolo

English Teacher, Westlake Boys' High School  
Graduate Diploma in Secondary Teaching

"In our cohort we only had 25 students who are training to be teachers, and the smaller and interactive classes have made such a difference to my studies. I also love that the assignments are meaningful and relevant. For example, we've had to produce a full unit plan, like any teacher would. It has equipped me with important skills I can put into practice in my first teaching job.

"All students complete three teaching placements. Through my placements I could experience a diverse range of schools all over Auckland, and have been privileged to teach in both high and low decile schools. The placements were so valuable and nicely complemented the theory we learned in class.

"The placements help you develop your identity as a teacher and network with teachers at a variety of schools. My supervising teachers were highly supportive and let me take over their classes within my first week on placement. One of them also provided me with a reference, which helped me secure my first teaching job.

"My advice for future AUT students is to take on every opportunity. I strongly believe that your teaching placement is like a job interview – put yourself out there and say yes to every opportunity, as you never know who might be watching and what it may lead to."



For more details visit [www.aut.ac.nz/education](http://www.aut.ac.nz/education)

Master of Education  
MEd | AK3649

### QUICK FACTS

Level: 9

Points: 180<sup>1</sup>

Duration: 2 years F/T, 5 years P/T

Starts: 25 Feb & 15 July 2019

Postgraduate Certificate  
in Education  
PgCertEd | AK3744

### QUICK FACTS

Level: 8

Points: 60

Duration: ½ year F/T, 2 years P/T

Starts: 25 Feb & 15 July 2019

## Master of Education

(Incorporating the Postgraduate Certificate in Education)

Deepen your knowledge of education through focused research in a specialist area. The Master of Education will appeal to the interests of educators in schools, early childhood centres, tertiary or higher education institutions, or teaching in community or informal education contexts. It will extend your understanding of education beyond educational practice.

A unique feature of this programme is its focus on educational research. It introduces the history and theory of educational research, and educational research as professional practice. It also helps you negotiate the practical challenges of understanding and applying systematic ways of generating knowledge.

### Entry requirements

#### Minimum entry requirements

For the postgraduate certificate, one of the following or equivalent:

- Bachelor of Education [Specialty] Teaching
- Graduate Diploma in [Specialty] Education

For the master's, you must have completed one of the above with a B grade average or higher in level 7 papers (or equivalent).

#### English language requirements

IELTS (Academic) 6.5 overall with 7.0 in Writing and all other bands 6.0 or higher; or equivalent

### What these qualifications cover

#### Master of Education

You complete the master's degree with papers and a:

- 90-point research thesis, or
- 60-point dissertation

#### Postgraduate Certificate in Education

The Postgraduate Certificate in Education consists of 60 points of papers from the Master of Education.

Papers include<sup>2</sup>:

- Building Mentoring Expertise
- Digital Pedagogies and the Techno-Literate Teacher
- Educational Futures – Part 1: The Theory
- Educational Futures – Part 2: The Practice
- Educational Research
- Essential Aspects of Steiner Education
- Leadership and Mentoring
- Learning Environments for the 21st Century
- Science Education – Issues, Ideas and Purposes
- Science Education and Society
- Steiner Education: Teaching and Learning through Imagination in a Digital World

### Career opportunities<sup>3</sup>

These qualifications enhance the academic, research and professional expertise of graduates in the educational work sector. This includes:

- Adult and tertiary education
- Compulsory education
- Early childhood education
- Non-formal education

AUT encourages early application. Places are limited.

1. Shorter duration subject to CUAP approval. Currently 2 years F/T.
2. You may need to travel to North Campus for some papers.
3. These qualifications don't lead to eligibility for provisional teacher registration.



#### Marina Fox

Head of the Chiropractic Academic Programme,  
New Zealand College of Chiropractic  
Master of Education student

"The university and its staff are supportive, encouraging and made something I thought would be very difficult, in terms of time, much more comfortable. AUT's degree structure allows for comfortable part-time study.

"The breadth of knowledge of my supervisor and other lecturers has been invaluable. The interaction with classmates from other teaching backgrounds has also provided some great ideas to apply in my own work environment.

"The Master of Education has given me a great knowledge base as well as practical skills to improve my performance as an educator. I want to improve the delivery of the chiropractic programme and use it as a template for other chiropractic colleges to apply to their programmes.

"The lecturers are great to communicate with. If you ask for the help you need, they are willing to give you the time and the help to complete each assessment. Don't doubt yourself, just do it.

"Before coming to AUT, I investigated several options and talked to colleagues who had completed various master's degrees and doctorates from universities in Auckland. AUT came highly recommended. It offered the best topic choices for my situation, and the flexibility I needed to complete my master's degree part-time while continuing to work."



For more details visit [www.aut.ac.nz/education](http://www.aut.ac.nz/education)



Master of Educational Leadership  
MEdL | AK1051

### QUICK FACTS

Level: 9

Points: 180

Duration: 1½ years F/T, 4 years P/T

Starts: 25 Feb & 15 July 2019

Postgraduate Certificate  
in Educational Leadership  
PgCertEdL | AK1052

### QUICK FACTS

Level: 8

Points: 60

Duration: ½ year F/T, 2 years P/T

Starts: 25 Feb & 15 July 2019

## Master of Educational Leadership

(Incorporating the Postgraduate Certificate in Educational Leadership)

Gain the skills to be an outstanding leader in an educational environment and contribute to the development of professional educational practice in Aotearoa New Zealand. The Master of Educational Leadership is designed for experienced educators and leaders who want to advance their professional practice skills. This qualification is particularly suited to current and aspiring leaders within education.

Throughout this programme, you further your leadership skills, and will be prepared to undertake or continue into leadership roles in educational organisations. It covers educational leadership issues in early childhood, compulsory and tertiary education, offering an inclusive approach to issues of cultural diversity in a complex environment. You critically examine the implications of challenges for leaders in educational settings. There's a focus on the context and purposes of leadership within a global perspective, as well as in terms of professional practices in New Zealand.

### Entry requirements

#### Minimum entry requirements

Completed one of the following:

- Relevant bachelor's degree
- Relevant graduate diploma
- Relevant professional qualification or professional experience approved by the Dean (or representative) to be equivalent to a bachelor's degree

#### Other requirements

- An applicant must have completed the entry requirements with a minimum of a B grade average or higher in papers at level 7 or equivalent.
- All applicants must have at least three years of relevant professional experience.

#### English language requirements

IELTS (Academic) 6.5 overall with 7.0 in Writing and all other bands 6.0 or higher; or equivalent

### What these qualifications cover

#### Master of Educational Leadership

You can either choose the paper-based pathway or the research pathway, in which you can investigate an issue, innovation or problem of your choice through your thesis.

### Postgraduate Certificate in Educational Leadership

The postgraduate certificate sits within and progresses to the Master of Educational Leadership. It has a focus on the leadership of learning and one other related area of educational leadership.

Papers<sup>1</sup>:

- Conceptualisations of Educational Leadership
- Leading in Diverse Cultures and Communities
- Organisational Culture and Educational Leadership
- Reflecting on Professional Practice as an Educational Leader
- Educational Leadership Project
- Educational Research
- Educational Futures – Part 1: The Theory
- Educational Futures – Part 2: The Practice
- Learning Environments for the 21st Century
- Digital Pedagogies and the Techno-Literate Teacher
- Building Mentoring Expertise
- Leadership and Mentoring

### Career opportunities<sup>2</sup>

Graduates will have enhanced leadership capabilities, thereby having a greater opportunity to undertake or continue leadership roles in educational organisations, from the early childhood or tertiary sectors to government or corporate settings.

AUT encourages early application. Places are limited.

1. You may need to travel to North Campus for some papers.

2. These qualifications don't lead to eligibility for provisional teacher registration.



#### Cushla Shepherd

Year 8 Teacher/Lower Middle School Dean, Orewa College  
Master of Educational Leadership student

"As education and the world changes, so does leadership. I aim to use my research to help teachers and leaders recognise the factors and leadership practices that support or hinder pedagogical transition. The Master of Educational Leadership enables me to understand how educators can influence and lead.

"This degree was strongly recommended by a friend. She believes that her studies gave her the knowledge and skills to pursue, and be appointed to, a school principal position. She spoke highly of the programme content, learning environment and the lecturers at AUT, calling the programme 'a transformative education opportunity to learn about leadership for the 21st century'.

"Reacquainting myself with studying, writing and managing study while working full-time was all very daunting. My lecturers and the other students in my programme wholeheartedly supported me, giving me encouragement and feedback, and helping me to achieve.

"I'm continuously sharing my learning, research and ideas with my colleagues, and I have applied my newly learnt leadership theories to my roles of dean, teacher and Board of Trustees representative. I've loved meeting other educators outside my school community. I now know I have the confidence and vision to succeed in postgraduate learning. This programme reaffirms that relationships and trust are at the heart of all learning and life."



For more details visit [www.aut.ac.nz/education](http://www.aut.ac.nz/education)

Master of Education Practice  
MEdPrac | AK1054

### QUICK FACTS

Level: 9

Points: 180

Duration: 1½ years F/T, 4 years P/T

Starts: 25 Feb & 15 July 2019

Postgraduate Certificate in  
Education Practice  
PgCertEdPrac | AK1059

### QUICK FACTS

Level: 8

Points: 60

Duration: ½ year F/T, 2 years P/T

Starts: 25 Feb & 15 July 2019

## Master of Education Practice

(Incorporating the Postgraduate Certificate in Education Practice)

**Do you work as a trainer or educator in a formal or informal setting? Whether you are a professional educator in a museum or gallery, or a registered teacher, this programme enables you to explore education through the lens of your experience. The Master of Education Practice links theory to practice across the diverse field of education. Its strengths lie in its ability to respond to the policy and socio-political impacts on education in New Zealand, its focus on cultural diversity and the ongoing critical inquiry into practice.**

The Postgraduate Certificate in Education Practice sits within and progresses to the Master of Education Practice.

### Entry requirements

#### Minimum entry requirements<sup>1</sup>

One of the following with a minimum of a B grade average or higher in papers at level 7 or equivalent:

- A bachelor's degree
- At least two years' experience in an educational workplace

#### English language requirements

IELTS (Academic) 6.5 overall with all bands 6.0 or higher; or equivalent

### What these qualifications cover

#### Papers include:

- The Inquiring Practitioner
- Concepts and Constructs in Education
- Global Impacts on Education Practice in Contemporary Society
- Perspectives on Māori and Pacific Education Experiences
- Education for Sustainability, Participation and Transformation
- Research-Based Inquiry for Practitioners
- Contemporary Issues in Education
- Applied Research Project

### Scholarship

You may be eligible for a scholarship covering tuition and student services fees if you're a new domestic student enrolling in a postgraduate programme. For more details visit [www.aut.ac.nz/scholarships](http://www.aut.ac.nz/scholarships)

AUT encourages early application. Places are limited.

1. B grade average only required for the Master of Education Practice.



For more details visit [www.aut.ac.nz/education](http://www.aut.ac.nz/education)

# Bachelor of Computer and Information Sciences

BCIS | AK3697

Study computer and information sciences with us and choose from a wide range of programmes that prepare you for careers spanning everything from telecommunications to education, and healthcare to finance. The Institute of IT Professionals NZ (IITP) recognises our Bachelor of Computer and Information Sciences as meeting the Seoul Accord. You benefit from our outstanding facilities and industry connections, including our ICT and Engineering Careers Fair where you can meet representatives from New Zealand's biggest and most exciting companies, from Datacom and Deloitte to Slingshot and Fisher & Paykel Healthcare. Pair this with the industry research project in your final year, and you have the perfect foundation to launch your career in computer and information sciences.

## Entry requirements

### Minimum entry requirements

University Entrance or equivalent

### Selection criteria

**Guaranteed entry:** Applicants will automatically be offered a place in this programme if they have gained University Entrance, and preference will be given to applicants with one or more subjects from Calculus, Mathematics or Statistics at NCEA level 3. All other applicants who have met the admission requirements will be considered on a case-by-case basis. Students who do not have the above background may be directed to take certain papers in their first year of study.

Interview may be required

### Preferred New Zealand school subjects

Calculus, Digital Technologies, Mathematics, Statistics

### Don't meet the entry requirements?

Consider starting with our Certificate in Science and Technology

### English language requirements

IELTS (Academic) 6.0 overall with all bands 5.5 or higher; or equivalent

## Majors offered at the South Campus

- IT Service Science
- Networks and Security
- Software Development

## QUICK FACTS

Level: 7

Points: 360

Duration: 3 years F/T, 6 years P/T

Starts: 25 Feb & 15 July 2019



### Julia Bower

Frontend Software Developer, Spark  
Bachelor of Computer and Information  
Sciences in Software Development

"Spark is a great place to work – I feel technically challenged but also supported. It's very structured in that you have clear goals and deadlines, but you also have space to learn and grow. My job involves working in a scrum team and carrying out development projects for Spark and its business ventures. It's a very open and dynamic environment. A typical day might include a catch-up with the team, some individual work, a bit of pair programming, and seeing what the other teams are up to during their project review sessions. I left AUT with a good understanding of the IT industry and a solid foundation of skills to build on. Starting my first job after university was a little scary and challenging, but the things I learned at AUT gave me a really good start, and the ability to learn and adapt."





### Racheal Herlihy

Co-Founder, Squawk Squad  
Bachelor of Computer  
and Information Sciences in  
Computational Intelligence

"Many people believe technology is changing the world. But computers don't have that power. People do. There's a huge opportunity to make a real difference in the world with the right people influencing new technologies. I love that by being able to code I can create products that can help people and make a difference.

"Every year, 25 million native birds are killed by rats, possums, stoats and other pests. Squawk Squad provides an app that allows anyone to collectively fund sensor-connected traps that are provided to bird sanctuary projects around New Zealand. Any time a pest is trapped, the funders are notified in real-time, so they can see the positive impact they're having in protecting our native birds.

"I came to AUT as I loved the balance between theory and practical skills. It's also known for its strong industry connections. For example, in the final year you do a research and development project, working alongside clients to solve real-life problems. This is invaluable and gives you the chance to practically apply all the learning you've done in your classes.

"I would absolutely recommend this degree. The lecturers have really made my university experience – their passion and obvious knowledge is inspiring. I've learnt so much from them, and they're always supportive and keen to help anyone wanting to go above and beyond their studies."

## Bachelor of Computer and Information Sciences

Continued

If you choose one of these majors, you can study the full degree at the South Campus.

First-year papers for the Analytics, Computational Intelligence and Computer Science majors are also available at the South Campus.

### What this qualification covers

#### Year 1

You complete eight papers as an introduction to computer and information sciences before focusing on a chosen major in Year 2 and 3.

Compulsory papers for all majors are:

- Applied Communication
- Programming 1
- Computing Technology in Society
- Foundations of IT Infrastructure
- Enterprise Systems
- Programming 2
- Computer Network Principles
- One mathematics paper from level 5 maths options (depending on your maths background)

#### Year 2 & 3

You specialise in your chosen major. You develop strong technical knowledge in IT, creative problem-solving skills and the ability to analyse, design and maintain IT solutions. You gain professional skills and knowledge in programming, IT infrastructure and networks, communication and teamwork, project management, ethics and professional practice, security and information systems.

In Year 3, you work on a real-life research and development project, which may involve software development or commercial research for organisations like Fisher & Paykel Healthcare Ltd, Eagle Technology and FutureTech.

## Career opportunities

### IT Service Science

- Call centre manager
- Database administrator
- Information analyst and designer
- IT support role
- Logistics analyst
- Network and systems administrator
- Outsourced IT services co-ordinator
- Solutions architect
- Integration and functional consultant
- IS operational manager
- IT service supervisor

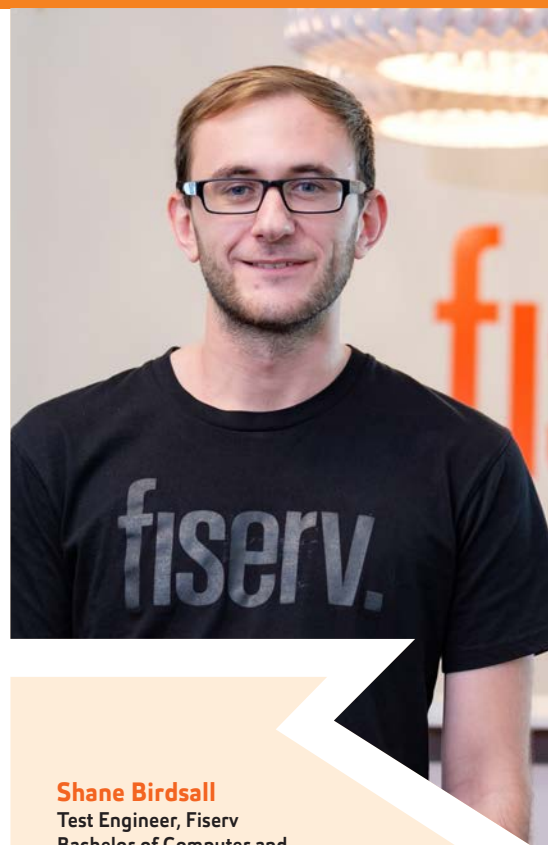
### Networks and Security

- IT security analyst
- Network analyst
- Network designer
- Systems and network administrator

### Software Development

- Computer programmer
- Mobile/app developer
- Software developer, engineer or tester
- Systems analyst or architect
- Technology consultant
- Web developer
- Project manager

AUT encourages early application. Places are limited.



### Shane Birdsall

Test Engineer, Fiserv  
Bachelor of Computer and  
Information Sciences in Computer  
Science and Software Development

"I knew I wanted to move to Auckland but wasn't sure which university was best for me. I ended up going with AUT because I could study at the South Campus in my first year. That was much closer for me and I liked the family vibe I felt on campus.

"I really enjoyed the computer science papers as they challenged me and changed the way I approached problems. As part of my degree I also did a research and development project with Fiserv, which is now my employer. Due to the project needing such a wide range of personal and technical skills I had to step up and learn lots of new things to get myself and the team across the finish line.

"My job now involves the analysis, design and implementation of automated testing solutions to ensure the products we ship are bug free. I work within quality assurance, and while I'm highly technical, my focus is that end users have a great, bug free experience. I've also been tasked with teaching test analysts how to read and write automation code through weekly workshops and hands-on training sessions.

"I love that I get to use so many different technologies in my job, and that my role involves high amounts of creative problem solving."



For more details visit [www.aut.ac.nz/cms](http://www.aut.ac.nz/cms)

## QUICK FACTS

Level: 7

Points: 360

Duration: 3 years F/T, 6 years P/T

Starts: 25 Feb & 15 July 2019

## Career opportunities

- Health and safety manager
- Construction site management
- Engineering risk management
- Building condition surveyor
- Renovation/refurbishment specialist
- Valuation surveyor
- Building inspector
- Facilities/asset management
- Building energy management
- Commercial property management

# Bachelor of Engineering Technology Building Engineering

BEngTech | AK3719

Engineering technologists focus on practical design and applied technology, working across a wide range of engineering disciplines. The Bachelor of Engineering Technology in Building Engineering prepares you for these diverse careers and covers core engineering technology skills related to construction. It's accredited by Engineering New Zealand and prepares you for Technical Membership of Engineering New Zealand. You learn to make engineering judgements, solve problems creatively and ethically, and design for sustainability. You develop strong interpersonal and teamwork skills, and communicate technical and non-technical information.

## Entry requirements

### Minimum entry requirements

- University Entrance or equivalent AND
- At least 14 NCEA credits at level 2 or above in Physics AND EITHER
- At least 14 NCEA credits at level 2 or higher externally assessed in Mathematics (including Algebra, Calculus, Geometry and Trigonometry) OR
- Any level 3 subject from Calculus, Mathematics, Statistics

### Selection criteria

Interview may be required

### Preferred New Zealand school subjects

Digital Technologies, English, Technology

### Don't meet the entry requirements?

Consider starting with our Certificate in Science and Technology

### English language requirements

IELTS (Academic) 6.0 overall with all bands 5.5 or higher; or equivalent

## What this major covers<sup>1</sup>

### Year 1

You take the following papers: Introduction to Engineering Design, Engineering Mathematics and six other papers related to your major.

### Year 2 & 3

You specialise in and further your knowledge of building engineering. In Year 3 you undertake valuable workplace experience, working on an industry-based project related to your major. You also need to complete a minimum of 600 hours of planned supervised work experience to graduate, in addition to completing all your papers.

AUT encourages early application. Places are limited.

1. Not all papers are offered at the South Campus. You may need to travel to the City Campus for some papers.

# Certificate in Science and Technology

CertScTech | AK1311

The one-year Certificate in Science and Technology gives you an introduction to the main areas involved in studying design, engineering, or computer and mathematical sciences. It's a great pathway to gain a taste of university life and develop the knowledge and study skills for further study at bachelor's level.

## Entry requirements

### Minimum entry requirements

- Completion of Year 12
- **NCEA:** 48 level 2 credits or higher, plus eight level 1 credits in at least one subject from Classical Studies, Drama, English, Geography, Health Education, History, History of Art, Media Studies, Social Studies, Te Re Māori or Te Reo Rangatira
- **CIE:** 60 points on the UCAS Tariff

### Selection criteria

- Literacy and numeracy tests
- Interview may be required
- The course of study of every applicant is subject to the approval of the programme leader.
- Preference will be given to applicants with:
  - NCEA:** 12 credits at level 2 or higher in Mathematics, and eight credits at level 2 or higher in at least one language rich subject

### English language requirements

IELTS (Academic) 5.5 overall with all bands 5.0 or higher; or equivalent

## What this qualification covers

- Academic Literacies

Plus select seven papers from:

- Foundation Algebra
- Foundation Calculus
- Foundation Design Principles
- Foundation Design Technologies
- Foundation Mathematics
- Foundation Mathematics and Design
- Foundation Physics A
- Foundation Physics B
- Foundation Programming
- Foundation Problem Solving
- Foundation Statistics
- Introduction to Engineering
- Tertiary English and Critical Thinking

## Further study

Students who complete this programme can apply for bachelor's degrees in design, engineering, computer and mathematical sciences.

AUT encourages early application. Places are limited.

## QUICK FACTS

Level: 4

Points: 120

Duration: 1 year F/T

Starts: 25 Feb & 15 July 2019



### Katie Reidpath

Trainee Service Engineer, Siemens Healthineers  
Bachelor of Engineering Technology in Electrical Engineering  
Certificate in Science and Technology

"I have a naturally curious mind that drives me to want to know more about how things work. Engineering is a career focused on constantly improving and changing technology, and I'm sure I'm never going to get bored with this career path. I chose AUT because I prefer practical subjects and hands-on learning. A family member had studied at AUT and recommended it over other universities. The projects where we could create something are what I enjoyed most about my studies. They gave me a real sense of achievement, and motivated me to work harder and be creative. I had only completed NCEA level 2 in secondary school, and the Certificate in Science and Technology was good preparation to study the Bachelor of Engineering Technology."



For more details visit [www.aut.ac.nz/cms](http://www.aut.ac.nz/cms)

## QUICK FACTS

Level: 9

Points: 180

Duration: 1½ years F/T, 3 years P/T

Starts: 25 Feb & 15 July 2019

## Master of Health Informatics

MHI | AK1319

During their healthcare journey patients may interact with a range of services and electronic systems that need to work effectively to provide quality care. These may include mobile devices (mhealth), monitoring and communication systems (telehealth), hospital and community electronic health records (EHRs) and government systems. However there is a shortage of professionals who understand the needs of clinical staff to develop effective health informatics IT tools.

The Master of Health Informatics explores the technical aspects of health informatics. It's ideal for information and communication technology graduates, and professionals interested in the latest developments, both in research and practice. It can open up careers in the healthcare software industry, hospitals and district health boards, government, private healthcare providers, non-governmental organisations, or primary health organisations.

### Entry requirements

#### Minimum entry requirements

- Relevant bachelor's degree (or equivalent) with a B grade average or higher in level 7 papers
- In exceptional circumstances an applicant who does not meet the requirements above but who has an appropriate combination of academic and professional experience may be considered for admission subject to completion of any relevant prerequisite papers.

#### English language requirements

IELTS (Academic) 6.5 overall with all bands 6.0 or higher; or equivalent

### What this qualification covers

The core papers and electives take one year to complete<sup>1</sup>. The final part of the programme is a one-semester applied research project, which may be in collaboration with health sector organisations and research groups at AUT.

### Career opportunities

Graduates may work in different sectors including:

- Healthcare software industry
- Hospitals
- District health boards
- Government
- Private healthcare providers
- Non-governmental organisations
- Primary health organisations

AUT encourages early application. Places are limited.

1. You may need to travel to the City Campus for some papers.



For more details visit [www.aut.ac.nz/cms](http://www.aut.ac.nz/cms)



# Bachelor of Health Science

BHSc | AK3680

Our population is growing and we're living longer, increasing the need for dedicated and inspirational healthcare graduates. Study with us and we'll help you develop the skills to meet the changing needs of global healthcare. AUT is New Zealand's largest and most diverse health education provider, and our programmes are developed with input from district health boards and leading health organisations. You can specialise in a specific health discipline or become a health professional in a non-clinical role. You learn from staff who are leaders in their field and have a genuine desire to see you succeed. This means you'll be well prepared for your career in the health sector, no matter where you go.

## Entry requirements

### Minimum entry requirements

- University Entrance or equivalent
- Must be capable of meeting Health Practitioners Competence Assurance Act (HPCA Act) requirements and Vulnerable Children's Act (VCA Act), including police clearance
- Applicants with two or more years of secondary and/or tertiary education outside New Zealand must meet IELTS requirements and may be interviewed.
- **Paramedicine:** Must hold a valid driver's licence.

### Selection criteria

- Preference will be given to applicants with the highest level of academic achievement and/or evidence of accomplishments in the relevant field.
- Interview may be required
- **Paramedicine:** One subject from Classical Studies, Drama, English, Geography, Health Education, History, History of Art, Media Studies, Social Studies, Te Reo Māori or Te Reo Rangatira and one subject from Biology, Chemistry, Earth and Space Science, Mathematics, Physics, Science or Calculus, Mathematics, Statistics.

### English language requirements

- **Paramedicine:** IELTS (Academic) 6.5 overall with all bands 6.5 or higher; or equivalent.
- **Other majors:** IELTS (Academic) 6.0 overall with all bands 5.5 or higher; or equivalent.

## Majors and degrees you can study at the South Campus

- Standard pathway<sup>3</sup>
- Counselling
- Health Administration
- Health Promotion<sup>3</sup>
- Midwifery (see page 40 for specific entry requirements)
- Paramedicine

## QUICK FACTS

Level: 7

Points: 360

Duration: 3 years F/T, P/T options for some majors<sup>1</sup>

Starts: 25 Feb & 15 July 2019<sup>2</sup>



### Kate Livingston

Advanced Care Paramedic, Queensland Ambulance Service, Gold Coast  
Bachelor of Health Science in Paramedicine

"There's nothing more valuable than human life. It's such a privilege to be able to help people during some of the most tragic times in their lives. I provide pre-hospital emergency medicine to the community, working autonomously to assess and treat patients for a range of health conditions, often during times of extreme stress. I'm constantly reminded how truly precious life is. AUT is one of the most highly regarded universities for paramedicine in Australasia. Each lecturer brought passion, expertise and valuable experience to the classroom, which shone through in their teaching. We were constantly encouraged to engage with international procedures and research, and my classmates have become some of my closest lifelong friends. Right from the beginning of the first year, we had valuable practical training that exposed us to a broad range of medical and trauma emergency scenarios."



### Jayde Purdie

Case Manager, ACC,  
Whangarei  
Bachelor of Health Science

"Case managers essentially provide support to ACC clients who have suffered injuries, ensuring their effective rehabilitation and subsequent return to independence or work. Our goal is to work in partnership with clients, medical providers and suppliers to develop a rehabilitation pathway through recovery.

"I enjoy the fast paced environment and being able to utilise aspects of my degree every day; whether it's interpreting medical records, understanding physiological concepts or applying theories from health administration management or promotion.

"In the third year of my Bachelor of Health Science, I completed a research project at the Office of the Health and Disability Commissioner. This really opened my eyes to the functioning of New Zealand medico law and gave me a greater understanding of the underlying legislation. I can confidently say that I use my degree every single day. I'm grateful that my AUT degree has equipped me with a broad understanding of the New Zealand healthcare system.

"The standard pathway in the Bachelor of Health Science offers the perfect platform for careers in non-clinical healthcare roles. AUT is renowned for its health and environmental sciences programmes, and students can choose from a range of health and non-health based topics. I also met some great friends through my study."

## Bachelor of Health Science

Continued

### What this qualification covers

#### Year 1

In Semester 1 all health science students complete:

- Human Anatomy and Physiology I
- Knowledge, Enquiry and Communication
- Lifespan Development and Communication
- Health and Environment; or Hauora Māori and Environment

You will be introduced to papers for your major in Semester 2.

#### Year 2 & 3

Papers for the following years of study will depend on your choice of major and/or minor. You increasingly specialise in your chosen area of health science, and become familiar with a wider range of complex health issues. There's an emphasis on workplace experience.

#### Te Ara Hauora Māori papers

Include Māori health papers and develop your ability to work effectively with Māori in the diverse health sector of Aotearoa, New Zealand.

#### Māori health papers

- Hauora Māori and Environment
- Māori Health Promotion
- Applied Primary Māori Mental Health
- Utilising Supervision in Practice

### Career opportunities

#### Standard pathway

- Education and research
- Government departments and non-governmental organisations
- Health administration and management
- Health advocacy
- Human resources
- Information technology
- Sales and marketing
- Support work

### Counselling

- Counselling agencies in the community
- Counsellors in schools
- Mental health providers
- Addiction agencies
- Gambling agencies
- Māori health providers
- Pacific health providers
- Refugee and migrant services

### Health Administration

Roles in district health boards and other Crown agencies, along with private healthcare providers, including:

- Clinical service manager or planner
- Medical records administrator
- Independent health advocate
- Independent health navigator

### Health Promotion

- Working with non-governmental organisations and community groups
- Working within central and local government in planning and funding and community development
- Working for district health boards and other Crown agencies
- Working with Iwi and Māori organisations doing grassroots community work, community economic development, whānau ora case management, research and evaluation
- Health promotion and public health teaching and researching

### Paramedicine

- Paramedic
- International relief work
- Safety services and emergency management roles
- Medic on super-yachts and cruise liners
- Working in an environment where out-of-hospital emergency care may be required, including frontline ambulances, oil rigs, industrial sites, ski fields, emergency manager in the corporate sector, and repatriation services

AUT encourages early application. Places are limited.

1. Six years part-time is available for the BHSc standard pathway, Counselling and Health Promotion.
2. Paramedicine has a Semester 2 intake.
3. If you choose the standard pathway or Health Promotion, some papers may need to be taken at North Campus.



#### Therese Lam

Health Promoter, Mapu Maia  
(Pasifika Team), Problem Gambling  
Foundation of New Zealand  
Bachelor of Health Science in  
Health Promotion

"For me, the highlight is being out in the community to raise awareness of the issue of problem gambling. Talking about what we can do to target this problem in our communities can be challenging but it's very rewarding when we achieve positive outcomes. Our job is to promote and create communities that are healthy and free from gambling harm. We do this through presentations, workshops and promotional stalls at community events. I'm also involved in planning projects that focus on gambling harm awareness, and engage with the community to help facilitate the change required. My studies prepared me well for my role now."

#### Employer comment

"I employed Therese for the passion and enthusiasm she showed during her student placement with Mapu Maia. I was impressed by her ability to complete set tasks and take the initiative on the community projects she was involved in. She displayed a well-rounded knowledge of community development and public health principles. We were looking for someone with a high level of communication skills, the ability to articulate ideas and formulate project plans, and the ability to work well in a team environment as well as independently."

**Pesio Ah-Honi Siitia, Public Health Manager/Pacific Manager, Problem Gambling Foundation of New Zealand**



For more details visit [www.aut.ac.nz/healthsciences](http://www.aut.ac.nz/healthsciences)

## QUICK FACTS

Level: 7

Points: 480

Duration: 3 years F/T<sup>1</sup>

Starts: 25 Feb 2019

# Bachelor of Health Science (Midwifery)

BHSc(Mid) | AK1035

Develop the skills to provide excellent midwifery care. AUT's midwifery degree prepares you for a successful and rewarding career as a midwife, either as a hospital midwife or a lead maternity carer (a self-employed case loading midwife).

Practical experience is a key part of the midwifery programme. You spend more than half of your time in clinical practice, developing the skills to become a confident and competent midwife. Throughout your studies you complete 2,400 practice hours, an experience that reflects the real world of midwifery.

## Entry requirements

### Minimum entry requirements

- University Entrance or equivalent
- Must be capable of meeting Health Practitioners Competence Assurance Act (HPCA Act) requirements and Vulnerable Children's Act (VCA Act) including police vetting
- Applicants with two or more years of secondary and/or tertiary education outside New Zealand must meet IELTS requirements and will be interviewed<sup>2</sup>
- Must hold a valid driver's licence
- Satisfactory references will be required

### Selection criteria

- Preference will be given to applicants with the highest level of academic achievement and/or evidence of accomplishments in the relevant field
- Interview may be required
- Applicants will normally require 18 credits at level 3 in either Biology or Chemistry, and 16 credits in one subject from Classical Studies, Drama, English, Geography, Health Education, History, History of Art, Media Studies, Social Studies, Te Reo Māori or Te Reo Rangatira

### English language requirements

IELTS (Academic) 7.0 overall with 6.5 or higher in Reading and Writing, and 7.0 in Listening and Speaking

## What this qualification covers

### Year 1

Papers this year cover the science of midwifery and normal childbirth. The 11 papers in Year 1 include shared and midwifery specialist papers.

Core papers include:

- Human Anatomy and Physiology I
- Human Anatomy and Physiology II
- Knowledge, Enquiry and Communication
- Lifespan Development and Communication
- Health and Environment; or Hauora Māori and Environment
- Methods of Research and Enquiry

Semester 2 papers:

- Art and Science of Midwifery I
- Developing Midwifery Practice
- Lactation and Breastfeeding
- Midwifery Practice for Normal Birth I
- Professional Frameworks for Midwifery Practice

### Year 2

You further your understanding of the art, science and practice of midwifery and pharmacology. Papers also explore complications of childbirth, the newborn with special needs, women's health and factors that impact on midwifery. These skills prepare you for professional practice.

### Year 3

You spend 80 percent of your time in practice placements with lead maternity carer midwives (self-employed case loading midwives) in the community and in primary and secondary maternity hospitals.

## Workplace experience

Throughout your studies you complete 2,400 practice hours, an experience that reflects the real world of midwifery.

## Career opportunities

Job opportunities for midwives are good, especially in the Auckland region. Midwives work in the areas of pregnancy and childbirth, including the first six weeks after childbirth. They are employed in public hospital services, or set up in practice as a self-employed midwife in the community. Throughout your studies you complete 2,400 practice hours, an experience that reflects the real world of midwifery.

AUT encourages early application. Places are limited.

1. Three semesters per year. This 480-point curriculum will normally be offered full-time over three years (including Summer School).
2. The New Zealand Midwifery Council has additional IELTS requirements for registration.



### India Brown

Caselading Midwife,  
Counties Manukau  
District Health Board  
Bachelor of Health Science (Midwifery)

"I enjoy working for women's health. As a midwife, you see families at their strongest and at their most vulnerable. It's an immense privilege. It's incredibly rewarding to see women become mothers, whether it's for the first time or the fifth.

"Women who choose me as their lead maternity carer, book with me at the beginning of their pregnancy. I care for them throughout the antenatal period, providing on-call support and care. I attend to the woman for her birth and continue to supply postnatal care for up to six weeks after the birth, in the birthing centres and at the family's home. I love the continuity of caring for women in this life-changing period of their journey.

"The majority of AUT's midwifery degree takes place in the working environment, with clinical placements starting in the very first year. We were provided with a variety of placements in primary birthing units, hospitals, ultrasound clinics, high-risk midwifery teams and diabetic clinics, as well as experience with rural lead maternity carers.

"Because I studied at the AUT South Campus in Manukau I also had access to the district health board with the greatest number of births in Australasia and an extremely complex demographic. This resulted in an immense amount of learning and experience before graduation."



For more details visit [www.aut.ac.nz/healthsciences](http://www.aut.ac.nz/healthsciences)



## QUICK FACTS

Level: 4

Points: 60

Duration: ½ year F/T, 1 year P/T

Starts: TBC<sup>1</sup>

## Certificate in Sport and Recreation

CertSR | AK3761

Grab your opportunity to gain skills and knowledge for further study or your future career in health sciences with this one-semester certificate. The Certificate in Sport and Recreation is for Year 13 students who didn't get UE at school and want to prepare themselves for further study in a health sciences degree. You build your academic writing, communication, computer literacy and time management skills, and develop an understanding of goal setting and teamwork.

### Entry requirements

#### Minimum entry requirements

Completion of Year 13

#### Selection criteria

- Interview may be required
- Two references
- Statement letter of intent and addendum required

#### Other entry requirements

Must be capable of meeting the Vulnerable Children's Act (VCA Act) requirements, including police clearance.

#### English language requirements

IELTS (Academic) 5.5 overall with all bands 5.0 or higher; or equivalent

### What this qualification covers

You need to complete four papers:

- Introduction to Human Structure and Function
- Society and Health
- Introduction to Human Development
- Introduction to Professional Development

### Further study

- Bachelor of Health Science
- Bachelor of Sport and Recreation

AUT encourages early application. Places are limited.

1. Once the 2019 start date for the foundation health pathway in the Certificate in Sport and Recreation has been set, it will be available on the AUT website.



For more details visit [www.aut.ac.nz/health\\_sciences](http://www.aut.ac.nz/health_sciences)

# Diploma in Paramedic Science

DipPSc | AK1011

The Diploma in Paramedic Science is for students who want a career in pre-hospital emergency healthcare, primarily in an ambulance setting. After completing the Diploma in Paramedic Science you will have successfully met the requirements to apply for work as an Emergency Medical Technician (EMT).

## Entry requirements

### Minimum entry requirements

- Completion of Year 12
- Must be capable of meeting Vulnerable Children's Act (VCA Act) requirements including police clearance

### English language requirements

IELTS (Academic) 6.0 overall with all bands 5.5 or higher; or equivalent

## What this qualification covers

You take the following papers:

- Knowledge, Enquiry and Communication
- Introduction to Paramedic Practice
- Human Anatomy and Physiology I
- Human Anatomy and Physiology II
- Paramedic Science
- Clinical Practice I
- Clinical Practice II

## Career opportunities

Career opportunities in New Zealand include employment with St John, Wellington Free Ambulance services, the New Zealand Defence Force (NZDF) and other pre-hospital medical providers. An emergency medical technician administers pre-hospital emergency care – looking after patients during the time between when an ambulance locates the patient and when that patient arrives at the hospital or treatment centre. EMTs are required to provide a high level of professional medical care to patients under a variety of circumstances.

AUT encourages early application. Places are limited.

## QUICK FACTS

Level: 6

Points: 120

Duration: 1 year F/T

Starts: 25 Feb & 15 July 2019



For more details visit [www.aut.ac.nz/healthsciences](http://www.aut.ac.nz/healthsciences)

Graduate Diploma in  
Health Science

## QUICK FACTS

Level: 7

Points: 120

Duration: 1 year F/T, P/T available<sup>1</sup>

Starts: 25 Feb &amp; 15 July 2019

Graduate Certificate in  
Health Science

## QUICK FACTS

Level: 7

Points: 60

Duration: ½ year F/T, 1 year P/T<sup>1</sup>

Starts: 25 Feb &amp; 15 July 2019

Graduate Diploma in  
Health Science

GradDipHSc | AK1013

Graduate Certificate in  
Health Science

GradCertHSc | AK3757

The Graduate Diploma and Graduate Certificate in Health Science are designed for people without a degree but with considerable work experience in health, sport or recreation who want to gain a qualification in their field. They're also suitable if you have a degree in another discipline and don't meet the entry criteria for postgraduate study. Both programmes include papers from the Bachelor of Health Science or Bachelor of Sport and Recreation. You'll be guided in your choice of papers.

## Entry requirements

- A bachelor's degree OR
- Relevant professional qualification or experience approved by the Dean (or representative) to be equivalent to a bachelor's degree

## English language requirements

IELTS (Academic) 6.5 overall with all bands 6.0 or higher; or equivalent

What these qualifications cover<sup>2</sup>

You can choose papers from the following areas (prerequisites and limitations may apply):

- Addictions
- Clinical Child and Adolescent Psychotherapy<sup>3</sup>
- Māori Health
- Psychology
- Other papers from the Bachelor of Health Science or Bachelor of Sport and Recreation

For the graduate diploma, you take eight 15-point approved undergraduate papers, of which at least five must be level 7.

For the graduate certificate, you take four 15-point approved undergraduate papers, of which at least three must be level 7.

AUT encourages early application. Places are limited.

1. As not all papers are offered every semester, it may not be possible to complete the qualification in the timeframe specified.
2. Students undertaking clinical papers (eg midwifery) need to meet the English requirements for the relevant Bachelor of Health Science subject area.
3. Available as part of the Graduate Diploma in Health Science only.



For more details visit [www.aut.ac.nz/healthsciences](http://www.aut.ac.nz/healthsciences)

# Postgraduate Diploma in Health Science

PgDipHSc | AK3487

# Postgraduate Certificate in Health Science

PgCertHSc | AK3484

**Health professionals from all sectors can study health sciences at an advanced level through these two programmes. Both programmes can prepare you for further study at master's level.**

Specialisations you can study at the South Campus<sup>2</sup> are: Child Health, Critical Care Paramedicine, Resuscitation (postgraduate certificate only), Paramedicine (postgraduate diploma only), Midwifery, Physical Activity and Nutrition. If you want to study without a specialisation, you may be able to build a pathway of study that suits your interests. You will need the approval of the Associate Dean (Academic).

## Entry requirements

### Minimum entry requirements

An applicant must have completed the following or equivalent:

- Bachelor of Health Science; OR
- Graduate Diploma in Health Science; OR
- Relevant professional practice or experience in a related health field equivalent to a bachelor's degree

### Other requirements

Must be capable of meeting Health Practitioners Competence Assurance Act (HPCA Act) requirements and Vulnerable Children's Act (VCA Act), including police clearance. Provide evidence of current professional practice.

### English language requirements

IELTS (Academic) 6.5 overall with no band less than 6.0

## What these qualifications cover

### Postgraduate Diploma in Health Science

You complete advanced-level papers in your specialty discipline to make up a total of 120 points. You may be able to credit papers towards a Master of Health Practice or Master of Health Science.

### Postgraduate Certificate in Health Science

You complete advanced-level papers in your specialty discipline to make up a total of 60 points. You may be able to credit papers towards a Postgraduate Diploma in Health Science, Master of Health Science or Master of Health Practice.

AUT encourages early application. Places are limited.

1. A lower level qualification may need to be surrendered in order to claim full credits towards a higher level qualification.
2. You may need to travel to the North Campus for some papers.

### Postgraduate Diploma in Health Science<sup>1</sup>

#### QUICK FACTS

Level:	8
Points:	120
Duration:	1 year F/T, up to 3 years P/T
Starts:	25 Feb & 15 July 2019

### Postgraduate Certificate in Health Science<sup>1</sup>

#### QUICK FACTS

Level:	8
Points:	60
Duration:	½ year F/T, up to 2 years P/T
Starts:	25 Feb & 15 July 2019



For more details visit [www.aut.ac.nz/healthsciences](http://www.aut.ac.nz/healthsciences)

## QUICK FACTS

Level: 9

Points: 180

Duration: 1½ years F/T, up to 4 years P/T

Starts: 25 Feb & 15 July 2019

## Master of Health Practice

MHPac | AK3733

**The Master of Health Practice is for health professionals with at least three years of clinical experience. It is ideal for health professionals who want to extend their practical knowledge and are ready for the next step in their career.**

Specialisations you can study at the South Campus:

- Child Health
- Midwifery
- Paramedicine
- Physical Activity and Nutrition

If you want to study without a specialisation, you may be able to enrol in a pathway of study that suits your interests and professional development needs. You will need the approval of the Associate Dean (Academic).

### Entry requirements

#### Minimum entry requirements

An applicant must have completed the following or equivalent:

- Relevant bachelor's degree OR
- Relevant graduate diploma OR
- Relevant professional qualification

AND

- At least three years of relevant professional experience.

#### Other requirements

- Must be capable of meeting Health Practitioners Competence Assurance Act (HPCA Act) requirements and Vulnerable Children's Act (VCA Act), including police clearance.
- May be required to complete prerequisite papers in chosen subject area.
- May be asked to provide evidence of current professional practice.

#### English language requirements

IELTS (Academic) 6.5 overall with no band less than 6.0

### What this qualification covers

You select papers and areas of practice that reflect your needs and interests. You need to complete a total of 180 points to complete the Master of Health Practice.

AUT encourages early application. Places are limited.

1. Not all papers in this qualification may be offered at the South Campus. You may need to travel to the North Campus for some papers.



For more details visit [www.aut.ac.nz/healthsciences](http://www.aut.ac.nz/healthsciences)



# Master of Health Science

MHSc | AK3485

The Master of Health Science is an opportunity for graduates from a variety of health backgrounds to advance their scholarly and professional knowledge in an area of their interest. You study in an interprofessional and collegial learning environment, and develop research skills.

## Entry requirements

### Minimum entry requirements

An applicant must have completed one of the following with a B grade average or higher, or equivalent:

- Bachelor of Health Science OR
- Graduate Diploma in Health Science

### Other requirements

- Must be capable of meeting Health Practitioners Competence Assurance Act (HPCA Act) requirements and Vulnerable Children's Act (VCA Act), including police clearance.
- Provide evidence of having completed an acceptable undergraduate research paper or equivalent.
- An applicant may be asked to provide evidence of current professional practice.

### English language requirements

IELTS (Academic) 6.5 overall with no band less than 6.0

## What this qualification covers

This degree consists of core and specialist papers and a thesis or dissertation, which gives you the opportunity to complete research relevant to your programme of study.

If you want to study without a specialisation, you may be able to enrol in a pathway of study that suits your interests and professional development needs. You will need the approval of the Associate Dean (Academic).

AUT encourages early application. Places are limited.

1. Not all papers in this qualification may be offered at the South Campus. You may need to travel to the North Campus for some papers.

## QUICK FACTS

Level:	9
Points:	240
Duration:	2 years F/T, up to 5 years P/T
Starts:	25 Feb & 15 July 2019



### Deborah Heke

*Ngāpuhi, Te Arawa*  
Doctor of Philosophy candidate  
Master of Health Science  
Bachelor of Health Science in Psychology and Applied Mental Health

"I've spent more of my adult years at AUT than away from it. Apart from the sense that AUT is my 'academic home', I appreciate that AUT is a contemporary university and is adaptable to the changing world. My experiences at AUT have ranged from being a naïve young student with little idea of where I was going to becoming a determined researcher. I've enjoyed the journey to and from these phases, and all those in between. AUT has supported and inspired each of those phases in a way that keeps me coming back. Doctoral study was a natural progression from my previous study. I want to pursue a career in academia and make a significant contribution to the area of Māori health."



For more details visit [www.aut.ac.nz/healthsciences](http://www.aut.ac.nz/healthsciences)

Master of Emergency Management  
MEmMgt | AK3930

### QUICK FACTS

Level: 9

Points: 180

Duration: 1½ years F/T, 4 years P/T

Starts: 25 Feb & 15 July 2019

Postgraduate Diploma in  
Emergency Management  
PgDipEmMgt | AK1015

### QUICK FACTS

Level: 8

Points: 120

Duration: 1 year F/T, up to 3 years P/T

Starts: 25 Feb & 15 July 2019

Postgraduate Certificate in  
Emergency Management  
PgCertEmMgt | AK1025

### QUICK FACTS

Level: 8

Points: 60

Duration: ½ year F/T, up to 2 years P/T

Starts: 25 Feb & 15 July 2019

## Master of Emergency Management

(Incorporating the Postgraduate Diploma and Postgraduate Certificate in Emergency Management)

The Postgraduate Diploma in Emergency Management and Postgraduate Certificate in Emergency Management are aimed at people involved in leadership in emergency situations, risk assessment and risk reduction roles, emergency response, and recovery roles within emergency and disaster management. The Master of Emergency Management is a progression from the postgraduate diploma. Strong emphasis is placed on research focusing on innovation in emergency and disaster management. The master's dissertation or practice project you complete as part of this programme is designed to add to the body of knowledge in this area.

### Entry requirements

#### Minimum entry requirements

#### Postgraduate Diploma and Postgraduate Certificate in Emergency Management

You must have completed one of the following or equivalent:

- Bachelor's degree OR
- Relevant professional qualification or experience approved by the Dean (or representative) to be equivalent to a bachelor's degree

#### Master of Emergency Management

- Relevant bachelor's degree with a B grade average or higher in level 7 papers or equivalent.

In exceptional circumstances, an applicant who does not meet the entry requirements above, but who has an appropriate combination of academic and professional experience, may be considered for admission.

#### Other entry requirements

- Must be capable of meeting Health Practitioners Competence Assurance Act (HPCA Act) requirements and Vulnerable Children's Act (VCA Act), including police clearance.
- For the postgraduate diploma and postgraduate certificate, you must also provide evidence of your ability to study at postgraduate level in this field.
- For the master's degree, you may be required to complete relevant prerequisite papers as specified by the Board of Studies.

#### English language requirements

IELTS (Academic) 6.5 overall with no band less than 6.0

## What these qualifications cover

These programmes will help you develop knowledge and skills in risk reduction, disaster resilience, risk communication, emergency response and recovery. They also bring a much-needed public health perspective to the emergency and disaster management (EDM) field. These programmes are suitable for those already working in the EDM field who would like to gain qualifications to complement their work experience and for those wanting to move into the EDM field.

### Postgraduate Certificate in Emergency Management

You need to complete a total of 60 points to complete this qualification. Topics include leading in emergency situations, business continuity and crisis management, and building resilient communities.

### Postgraduate Diploma in Emergency Management

You need to complete a total of 120 points to complete this qualification. The postgraduate diploma is a planned progression of emergency and disaster management from the postgraduate certificate. It explores risk reduction, resilience, emergency response and leadership, communication, health development and disaster recovery.

### Master of Emergency Management

You need to complete a total of 180 points to complete this qualification. The master's degree expands on the postgraduate diploma, giving you the opportunity to research an area of emergency management practice that supports national and international trends in emergency and disaster management.

AUT encourages early application. Places are limited.



**Mikael Raffael  
T Abaya**

Master of Emergency  
Management

"As a civil defence officer and volunteer firefighter back in the Philippines, I wanted to deepen my knowledge of disaster and emergency management. I enjoy learning how emergency management works from a Kiwi perspective and love sharing the Filipino perspective with the other students.

"I chose AUT because the Master of Emergency Management is a well-rounded programme for those interested in emergency and disaster management. The AUT staff were also very accommodating, quickly answered my inquiries and helped me throughout the enrolment process.

"For my master's research, I'm focusing on the best practices of the Philippines' disaster risk reduction and management system. I wanted to compare the best practices of the Philippine system with those of the New Zealand system, and use both approaches to recommend best practices for other countries.

"Re-learning the academic writing and research process was my biggest challenge, but AUT's Student Learning team recommended assistance and tutorials to help me conform to the academic standards required in postgraduate study."



For more details visit [www.aut.ac.nz/healthsciences](http://www.aut.ac.nz/healthsciences)

Master of Public Health  
MPH | AK3805

### QUICK FACTS

Level: 9

Points: 240

Duration: 2 years F/T, up to 5 years P/T

Starts: 25 Feb 2019

Postgraduate Diploma in  
Public Health  
PgDipPH | AK3806

### QUICK FACTS

Level: 8

Points: 120

Duration: 1 year F/T, up to 3 years P/T

Starts: 25 Feb 2019

Postgraduate Certificate  
in Public Health  
PgCertPH | AK3807

### QUICK FACTS

Level: 8

Points: 60

Duration: ½ year F/T, up to 2 years P/T

Starts: 25 Feb 2019

## Master of Public Health

(Incorporating the Postgraduate Diploma and Postgraduate Certificate in Public Health)

Our public health programmes emphasise the role of social, economic, cultural, educational, environmental and other factors in individual and community wellbeing. They build your understanding of the key elements of public health, including how to identify community health priorities, develop community health interventions and critically evaluate their effects. Throughout your studies you develop the skills to contribute to public health management and policy, disease control and health promotion across a wide range of populations.

### Entry requirements

#### Minimum entry requirements

You must have completed one of the following:

- Relevant bachelor's degree OR
- Relevant graduate diploma
- AND
- At least one year of relevant professional experience

#### Other entry requirements

- Must be capable of meeting Vulnerable Children's Act (VCA Act) requirements, including police clearance.
- For the postgraduate diploma and postgraduate certificate, you may be admitted on the basis of a relevant professional qualification or professional experience approved by the Dean (or representative) to be equivalent to a bachelor's degree.

#### English language requirements

IELTS (Academic) 6.5 overall with no band less than 6.0

### What these qualifications cover

#### Postgraduate Certificate in Public Health

You need to complete a total of 60 points to complete this qualification.

#### Postgraduate Diploma in Public Health

You need to complete a total of 120 points.

#### Master of Public Health

You need to complete a total of 240 points to complete this qualification. As part of this programme you complete a research study option of a 60-point dissertation, or a 90 or 120-point thesis.

AUT encourages early application. Places are limited.



For more details visit [www.aut.ac.nz/healthsciences](http://www.aut.ac.nz/healthsciences)

# Doctor of Health Science

DHSc | AK3664

**This degree fulfils today's industry needs, enabling health professionals to pursue research that is directly relevant to their workplace. AUT is the only university in New Zealand to offer this qualification.**

The Doctor of Health Science is designed to challenge. You explore a specialist area of interest, contribute to the body of knowledge in your field, and advance your career prospects. This degree is an innovative combination of taught papers and a research project investigating your own field of professional practice.

## Entry requirements

- Applications are welcome at all times during the year.
- Acceptance is subject to the availability of staff for supervision, prior research preparation and appropriate facilities

### Minimum entry requirements

Must have completed the following in a specialisation appropriate to the proposed research:

- Master's degree with honours OR
- Bachelor's degree with honours (equivalent to four years of study)

The degree must have a standard equivalent to first class or second class (first division) honours.

The degree should include advanced learning in research, execution of a research project and a written report on the research.

AND

A minimum of five years' professional experience in the specific area of study.

### English language requirements

IELTS (Academic) 6.5 overall with 7.0 in Writing and no band less than 6.0

## What this qualification covers

The Doctor of Health Science is a combination of 120 points from papers and a research thesis of 240 points.

You provide a full research proposal when you're close to completing the coursework papers, before you start the thesis paper.

## QUICK FACTS

Level:	10
Points:	360
Duration:	2 years F/T, 6 years P/T
Starts:	25 Feb & 15 July 2019





**Apollo Taito**  
Doctor of Health  
Science student

"I'm researching how Pacific mental health leaders manage their specific form of leadership within a District Health Board setting. The subject is something that resonates with me as I'm familiar with the ongoing challenges and rewards of balancing one's own Pacific values within a mainstream non-Pacific environment. Pacific values can certainly be integrated into existing systems, and I aim to describe and understand what these leaders' experiences are.

"Initially, I was nervous about the commitment to doctoral study. My supervisor Dr Roz Sorenson and the head of department, Professor Liz Smythe, reminded me to start only when I truly felt ready. It's a well thought-out programme, and very supportive.

"I could never have started doctoral study if my wife wasn't okay and on board. My advice to others is to ensure everything is sound at home and work. You also need to be flexible and breathe.

"My supervisor and her team are fantastic. They keep the programme interesting and appealing. You certainly don't get many programme heads at other universities who email you supportive messages and inspirational poetry during your doctoral studies. I love it and appreciate it."

## Doctor of Health Science

Continued

You complete the following papers:

### Practice and Philosophies 40 points

Clarifies research focus towards initiating research that impacts constructive change in healthcare practice/education, identifying complex influences and possibilities. Examines possible research approaches. Begins project management plan for completion of DHSc. Reflects on self-as-leader.

### Health Systems Analysis 40 points

Critically analyses the New Zealand health and disability system, policy developments, reforms and relevant, health law in relation to research focus. Considers the possibilities and tensions that arise out of difference in place, scope, profession and time. Strategises the nature of change possible within your ongoing research project, and the socio-political challenges of leading such change.

### Research Practice and Methodology<sup>1</sup> 40 points

Synthesises knowledge and designs research in a specific area of practice. Shows potential for originality in development of new knowledge. Demonstrates project planning in action.

### Thesis in Health Science 240 points (prerequisite – coursework)

Provides the opportunity to undertake a sustained piece of research and make a significant contribution to knowledge and understanding in an identified area of practice. Makes explicit the practitioner-researcher link that highlights issues from practice to scrutiny through the research process.

Papers may be delivered in a range of formats including on-campus block courses or online. Individual papers may not be offered every year.

### Doctoral Fee Scholarship

The purpose of this scholarship is to assist PhD or DHSc thesis candidates to further their studies. For more information visit [www.aut.ac.nz/scholarships](http://www.aut.ac.nz/scholarships)

AUT encourages early application.

1. Prerequisite papers are Health Systems Analysis, and Practice and Philosophies.



For more details visit [www.aut.ac.nz/healthsciences](http://www.aut.ac.nz/healthsciences)

# Bachelor of Laws

LLB | AK1008

AUT law graduates have established successful careers in a range of law firms, immigration consultancies and commercial establishments including Kensington Swan, Bell Gully, Buddle Findlay, Chapman Tripp, Meredith Connell, Langdon and Co Lawyers, Enterprise Law, Simpson Dowsett Mackie, Davies Law, Te Nahu Lovell & Co, Simpson Grierson, Kayes Fletcher Walker and Wynyard Wood. Our interactive lectures and regular case-study workshops develop your ability to interpret, critically analyse, reason and deliver practical solutions to legal problems. You become an articulate communicator, and confident in your understanding of legal principles and their relevance to business and community. You also develop your critical thinking and problem-solving skills, your ability to act ethically, and your sense of community and professional responsibility.

## Entry requirements

### Minimum entry requirements

University Entrance or equivalent

### English language requirements

IELTS (Academic) 6.5 overall with 7.0 in Writing and no band less than 6.0

### Preferred New Zealand school subjects

Subjects that develop a very good standard of reading, oral and written English

### Don't meet the entry requirements?

Consider starting with our Certificate in Business

## What this qualification covers

All the compulsory papers in Part I, II, III and IV will be offered at the South Campus. Electives are available at the City Campus.

### Part I

You study three compulsory law papers: Legal System, Legal Reasoning and Writing, and Personal Property. This makes up half of your first-year study (60 points). The other 60 points must be taken from another AUT degree, which gives you the opportunity to broaden your study and enables you to enrol in one of the double degrees.

If you complete your Part I law papers with at least a B grade average in the compulsory law papers, you will be offered a place in Part II. Other students may also be eligible for direct entry into Part II.

## QUICK FACTS

Level: 7

Points: 480

Duration: 4 years F/T,  
up to 8 years P/T

Starts: 25 Feb 2019



### Samantha Hiew

Barrister and Solicitor, Croftfield Law  
Bachelor of Laws

"I knew that I wanted to study law, and I had heard that the AUT Law School is modern and offers programmes that are tailored to what law firms are looking for in university graduates and junior lawyers. That gives the AUT degree an advantage. In my role now, I enjoy the challenge of learning something new every day, and the detail in preparing commercial agreements to protect clients and their personal or commercial interests. Because Croftfield Law is a general practice law firm, my job involves advising clients in all areas of the law, including criminal law, property conveyancing, commercial transactions and immigration. I'm responsible for preparing and reviewing documents and agreements for clients, liaising with other lawyers, and doing research on any new area of law that affects our clients' interests."



### Alice Alipour

Graduate Solicitor, Shieff  
Angland Lawyers  
Bachelor of Laws

"We specialise in commercial, property and litigation services, and I enjoy the fact that I learn something new every day. I work in the commercial and employment litigation team, and currently assist the litigators in preparing pleadings, drafting affidavits and briefs of evidence. I also draft interesting articles in relation to new developments in the law. AUT's practical teaching method has enabled me to communicate with the partners effectively. The competitions I completed while I was a law student at AUT have also helped me develop my client interviewing skills. These skills are essential for my career now."

### Employer comment

"We hire graduates who not only have good degrees but who impress us with their range of life experience and interpersonal skills. Alice had the makings of what it takes to be a great lawyer: intelligence and the ability to problem-solve complex legal issues, as well as tenacity, hard work and good EQ. Our cultural fit is very important to us, so we need someone who will work well in our team, be a positive contributor and in time become a good networker for gathering new business. Alice is exceeding our expectations and proving to be an excellent hire."

**Kalev Crossland, Partner, Shieff  
Angland Lawyers**

## Bachelor of Laws

Continued

### Part II, III and IV

In your second year, you study six further compulsory law papers: Law of Contract, Law of Torts, Constitutional Law, Real Property, Trusts and Company Law. In your third year you study Judicial Review of Administrative Action, Criminal Law, Advanced Private Law, Public International Law and choose the rest of your papers from law electives. In your final year you study Legal Ethics, as well as a selection of law electives.

### Career opportunities

Graduates of AUT's Bachelor of Laws are eligible to gain admission as barristers and solicitors of the High Court of New Zealand on completion of their Professional Legal Studies course. As a lawyer you might practise in a wide range of legal areas including corporate law, commercial and intellectual property, family law, environmental law, criminal law, taxation and general practice.

Law graduates also move into roles that include:

- In-house lawyers in large New Zealand and multinational businesses and organisations
- Patent attorneys
- Policy advisors to central and local government
- Senior management roles in business
- Taxation practitioners in accountancy practices

AUT encourages early application. Places are limited.



For more details visit [www.aut.ac.nz/law](http://www.aut.ac.nz/law)

# Certificate in Legal Studies

CertLegalSt | AK2601

Interested in law and the legal system? Gain an understanding of New Zealand legal framework in less than a year. The Certificate in Legal Studies offers an introduction to law in New Zealand and includes papers from the Bachelor of Laws. This certificate is ideal for students who aren't quite ready to commit to a full law degree or who have an overseas law degree and need to complete the CLE's requirements to practise law in New Zealand. The Certificate in Legal Studies prepares you for further study in the Bachelor of Laws.

## Entry requirements

### Minimum entry requirements

University Entrance or equivalent

### Preferred New Zealand school subjects

Subjects that develop a very good standard of reading, oral and written English.

### English language requirements

IELTS (Academic) 6.0 overall with all bands 5.5 or higher; or equivalent

## What this qualification covers

To graduate with a Certificate in Legal Studies you must successfully complete 60 points from the Bachelor of Laws.

If you haven't studied law before you complete the following papers for the certificate:

- Legal System (15 points – Semester 1)
- Personal Property (15 points – Semester 2)
- Legal Reasoning and Writing (30 points – full-year paper)

If you've previously studied law and need to complete papers as required by the New Zealand Council of Legal Education, you may complete level 6 and level 7 papers from the Bachelor of Laws.

AUT encourages early application. Places are limited.

## QUICK FACTS

Level: 5

Points: 60

Duration: ½ year F/T <sup>1</sup>,  
1 year P/T

Starts: 25 Feb 2019

1. Some papers are full-year papers



## QUICK FACTS

Level: 7

Points: 360

Duration: 3 years F/T, P/T available

Starts: 25 Feb & 15 July 2019



### Damian Tuiloma

Coach Developer, Harbour Sport  
Performance Director/Business Owner,  
DT Fitness and Performance  
Bachelor of Sport and Recreation in Coaching  
& Sport and Exercise Science

"AUT is the gold standard when it comes to studying sport and recreation. I wanted to start a career in sport after I had finished playing rugby and I was really keen on developing my passion for rugby through coaching. I did my research on what university had the most to offer, and I chose AUT because I wanted to learn from the leaders in the sport and recreation industry. The skills I've developed through AUT have enabled me to work with a variety of people, and be dynamic in my approach to daily tasks. Thanks to the valuable industry experience I got as part of my AUT degree, I could learn from other professionals in the field and see where I fit in the industry."

# Bachelor of Sport and Recreation

BSR | AK3521

Take your interest in sport, recreation and fitness and create a rewarding career for yourself. There is demand for skilled sport, recreation and fitness professionals in New Zealand and overseas. Join us and we help you develop the skills to play a key role in this exciting industry. AUT is New Zealand's leading sport and recreation university. You'll have access to world-class facilities, high-achieving academics and researchers, and our outstanding workplace experience programme. Industry experience is an important part of your study, and you can choose from a vast number of host organisations.

At the AUT South Campus you can study the standard pathway in the Bachelor of Sport and Recreation. This is a broad programme of study, giving you the flexibility to select papers from across a range of sport and recreation related disciplines and majors.

## Entry requirements

### Minimum entry requirements

University Entrance or equivalent

### Selection criteria

Preference will be given to applicants with one subject from Classical Studies, Drama, English, Geography, Health Education, History, History of Art, Media Studies, Social Studies and either Physical Education or a subject from Biology, Chemistry, Earth and Space Science, Physics, Science or Calculus, Mathematics, Statistics.

### Other entry requirements

Must be capable of meeting the Vulnerable Children's Act (VCA Act) requirements, including police clearance.

### Preferred New Zealand school subjects

All subjects listed above are useful

### Don't meet the entry requirements?

Consider starting with our Certificate in Sport and Recreation

### English language requirements

IELTS (Academic) 6.0 overall with all bands 5.5 or higher; or equivalent



For more details visit [www.aut.ac.nz/sportrecreation](http://www.aut.ac.nz/sportrecreation)



## What this qualification covers

### Year 1

Papers you study this year include:

- Knowledge, Enquiry and Communication
- Leadership in Sport and the Outdoors
- Sport and Exercise Science Fundamentals
- Skill Learning in Sport and Recreation
- Innovative Planning in Sport and Recreation
- Sport and Recreation in Aotearoa/New Zealand
- Contemporary Issues in Sport and Recreation

Plus one of:

- Health and Environment
- Human Anatomy and Physiology I
- Lifespan Development and Communication

### Year 2

In Year 2 you take Law and Ethics in Sport and Recreation, Group and Individual Behaviour, and Evidence Based Practice. This year also includes two work placements of 30 to 40 hours in different organisations. You also complete major and optional papers in your area(s) of interest.

### Year 3

In Year 3, you complete the final major and optional papers in your area(s) of interest. You also spend between 350 and 400 hours working with an organisation, including a specific project related to your major. It's a great way to get industry experience while still being able to get feedback from AUT lecturers, and for many of our students this workplace experience also leads to a job offer. Examples of local relationships include Aktive Auckland Sport and Recreation, Sir Peter Blake Marine Education and Recreation Centre, Bruce Pulman Park, High Performance Sport New Zealand, Harbour Sport, YMCA, and numerous other sports organisations and schools.

AUT encourages early application. Places are limited.



### Tara Coe

*Tainui, Te Arawa, Ngāti Tahinga, Ngāti Pikiao*  
Learning Support Advisor,  
Skills Active Aotearoa  
Bachelor of Sport and Recreation  
in Sport Management

"I grew up in a whānau that loved sports and played all the time. Once I was old enough to decide what I wanted to do after school, I knew that I wanted to learn more and give back to the sport and recreation industry. AUT is a leader in this field, and offered great support and study options. At the start I was bit overwhelmed and scared. Before I moved to Auckland I hadn't had to tackle a roundabout, let alone a motorway. Not to mention being in a lecture with over 200 people. I soon moved to the AUT South Campus where the classes were much smaller, which suited me better. I felt like I had more time to do things, and there was also a lot of support from lecturers and tutors. AUT was an amazing time of my life."

### Employer comment

"We were looking for someone who could fit into an existing team and who had industry knowledge and a real affinity with the sectors we service. Tara's qualification complements her current position well and aligns with the sectors she works in. The theoretical knowledge she learned through AUT complements our offerings well."

**Kelvin Trumper, General Manager  
Trainee Support, Skills Active  
Aotearoa**



For more details visit [www.aut.ac.nz/sportrecreation](http://www.aut.ac.nz/sportrecreation)

Graduate Diploma in Sport  
& Exercise

## QUICK FACTS

Level: 7

Points: 120

Duration: 1 year F/T, up to 3 years P/T

Starts: 25 Feb &amp; 15 July 2019

Graduate Certificate in Sport  
& Exercise

## QUICK FACTS

Level: 7

Points: 60

Duration: ½ year F/T, up to 2 years P/T

Starts: 25 Feb &amp; 15 July 2019

Graduate Diploma in Sport  
& Exercise

GradDipSp&amp;Ex | AK1032

Graduate Certificate in Sport  
& Exercise

GradCertSp&amp;Ex | AK1031

Interested in sport and recreation but don't want to commit to a three-year degree? If you have a degree in another field or considerable professional experience in sport, recreation or health and want to gain a further qualification, these programmes are for you. You choose papers from the Bachelor of Sport and Recreation or the Bachelor of Health Science. We will guide you in your choice of suitable papers.

## Entry requirements

## Minimum entry requirements

- A bachelor's degree OR
- Relevant professional qualification or experience approved by the Dean (or representative) to be equivalent to a degree

## English language requirements

IELTS (Academic) 6.5 overall with all bands 6.0 or higher; or equivalent

What these qualifications cover<sup>1</sup>

## Graduate Diploma in Sport and Exercise

You must complete at least 120 points, including 75 points from level 7 Bachelor of Sport and Recreation papers.

## Graduate Certificate in Sport and Exercise

You must complete at least 60 points, including 45 points from level 7 Bachelor of Sport and Recreation papers.

Depending on your existing knowledge and interest areas, you may have to take additional papers to meet prerequisite requirements for specific pathways.

## Further study

If you perform well in the Graduate Diploma in Sport and Exercise you can use it as a pathway into postgraduate study in a related field.

AUT encourages early application. Places are limited.

1. Not all papers are available at the South Campus. You may have to travel to the North Campus for some papers.



For more details visit [www.aut.ac.nz/sportrecreation](http://www.aut.ac.nz/sportrecreation)

# Certificate in Sport and Recreation

CertSR | AK3761

Grab your opportunity to gain skills and knowledge for further study in the Bachelor of Sport and Recreation with this one-semester certificate. The Certificate in Sport and Recreation is for Year 13 students who didn't get UE at school and want to prepare themselves for further study in sport and recreation. You build your academic writing, communication, computer literacy and time management skills, and develop an understanding of goal setting and teamwork.

## Entry requirements

### Minimum entry requirements

Completion of Year 13

### Selection criteria

- Interview may be required
- Two references
- Statement letter of intent and addendum required

### Other entry requirements

Must be capable of meeting the Vulnerable Children's Act (VCA Act) requirements, including police clearance.

### English language requirements

IELTS (Academic) 5.5 overall with all bands 5.0 or higher; or equivalent

## What this qualification covers

You need to complete four papers:

- Health and Wellbeing
- The Business of Sport and Recreation
- Realising Potential
- Survive and Succeed in Sport and Recreation

Offered via lectures and workshops, these papers cover: body systems and functions; applied sports science principles; coaching and leadership; sport, industry and management; wellness and nutrition, diversity and Mātauranga Māori in sport and recreation.

## Further study

- Bachelor of Sport and Recreation
- Bachelor of Health Science

AUT encourages early application. Places are limited.

## QUICK FACTS

Level: 4

Points: 60

Duration: ½ year F/T, 1 year P/T

Starts: 25 Feb & 15 July 2019



For more details visit [www.aut.ac.nz/sportrecreation](http://www.aut.ac.nz/sportrecreation)

Master of Sport and Exercise  
MSP&Ex | AK3910

### QUICK FACTS

Level: 9

Points: 240

Duration: 2 years F/T, up to 5 years P/T

Starts: 25 Feb & 15 July 2019

Postgraduate Diploma in  
Sport and Exercise  
PgDipSpEx | AK3911

### QUICK FACTS

Level: 8

Points: 120

Duration: 1 year F/T, up to 3 years P/T

Starts: 25 Feb & 15 July 2019

Postgraduate Certificate  
in Sport and Exercise  
PgCertSpEx | AK3912

### QUICK FACTS

Level: 8

Points: 60

Duration: ½ year F/T, up to 2 years P/T

Starts: 25 Feb & 15 July 2019

## Master of Sport and Exercise

(Incorporating the Postgraduate Diploma and Postgraduate Certificate in Sport and Exercise)

These programmes provide you with a critical understanding and appreciation of sport and exercise, integrating knowledge of specific science, evidence-based practice, and relevant theoretical concepts of physical conditioning, coaching or sports management.

### Entry requirements

#### Minimum entry requirements

For the postgraduate diploma and postgraduate certificate, you must have completed one of the following or equivalent:

- Bachelor of Sport and Recreation OR
- Graduate Diploma in Sport and Exercise OR
- Relevant professional practice or experience equivalent to a bachelor's degree

For the master's degree, you must have completed one of the following with a B grade average or higher:

- Bachelor of Sport and Recreation OR
- Graduate Diploma in Sport and Exercise

You must also provide evidence of having completed an undergraduate research paper or equivalent.

#### Other entry requirements

Must be capable of meeting the Vulnerable Children's Act (VCA Act) requirements, including police clearance.

#### English language requirements

IELTS (Academic) 6.5 overall with all bands 6.0 or higher; or equivalent

### What these qualifications cover

#### Postgraduate Certificate in Sport and Exercise

You need to complete a total of 60 points to complete this programme. You may be able to cross-credit papers towards a Postgraduate Diploma in Sport and Exercise or Master of Sport and Exercise.

#### Postgraduate Diploma in Sport and Exercise

You need to complete a total of 120 points to complete this programme, including 45 points of core papers and 75 points chosen from the papers on the next page. It provides the foundation coursework to advance to a Master of Sport and Exercise.

## Master of Sport and Exercise

You need to complete a total of 240 points to complete this programme. The master's thesis is at the heart of the programme and is equivalent to one year of full-time study.

Papers include<sup>1</sup>:

- Advanced Sport Development
- Advanced Sport Leadership and Management
- Advanced Sports Event Management
- Advanced Sport Marketing
- Applied Human Movement Studies
- Applied Nutrition and Exercise Science
- Applied Skill Acquisition in Sport
- Applied Sport and Exercise Psychology
- Contemporary Sport Coaching
- Enhancing Muscular Performance
- Exercise Physiology
- Integrative Research
- Leadership and Management
- Nutrition and Health Promotion
- Performance and Movement Analysis
- Physical Activity and Health Promotion
- Practicum in Physical Conditioning
- Qualitative Research II
- Quantitative Research II
- Specialist Readings

AUT encourages early application. Places are limited.

1. Not all papers are available at the South Campus. You may have to travel to the North Campus and/or AUT Millennium for some papers.



### Erin Bowerman

Strength and Conditioning Coach,  
The Royal Ballet School  
(White Lodge), London  
Master of Sport and Exercise

"I'm primarily responsible for managing the strength, conditioning and fitness training of 130 full-time ballet students between the ages of 11 and 16. I work with students on both traditional and functional strength and conditioning for dance, alongside physiotherapists, GPs, sports doctors and artistic staff.

"It's very rewarding to provide students with tools that will not only help them nurture their bodies and make them stronger, fitter and even better performers than they already are, but also provide them with some sense of control within their training, particularly around injury management.

"On a day-to-day basis I of course use the technical and theoretical underpinnings of my AUT degree in my work with the students. However, I often feel it's the lessons and values that were instilled in me from the AUT culture – like adaptability, versatility and the importance of never being afraid to face change – that I'm using most to help the industry I'm so passionate about move forward.

"I met some of the most talented and best people I know during my time at AUT, both academic staff and peers. The friends I made and the colleagues I had the privilege of working with and being mentored by made my time at AUT one of the best of my life."



For more details visit [www.aut.ac.nz/sportrecreation](http://www.aut.ac.nz/sportrecreation)



# How to apply

Below is the step-by-step guide to the applications process for domestic students. For more information visit [www.aut.ac.nz/apply](http://www.aut.ac.nz/apply)

1

## APPLY EARLY

- Places are limited. Submit your application well before the semester starts

### APPLYING FOR 2019

- Semester 1
  - apply by 3 December 2018
- Semester 2
  - try to apply by 3 May 2019

## INTERNATIONAL STUDENTS

We recommend that you submit your application at least three months before the semester starts as places are limited and visa processing times can vary.

You can apply online or through an AUT approved international agent.

For more information visit  
[www.aut.ac.nz/international](http://www.aut.ac.nz/international)

2

## COMPLETE THE APPLICATION FORM

- Apply online
- Indicate your programme(s) of choice and major (if known)
- You will be automatically assessed for all your programme choices at the same time

## SUBMIT YOUR APPLICATION

## WE ACKNOWLEDGE YOUR APPLICATION

- We will send you an acknowledgment email/letter, which explains how to check the status of your application
- We will contact you if we need more information





3

## WE ASSESS YOUR APPLICATION

- We assess your application to ensure you have met the entry criteria for the programme(s) you are applying for
- We consider your academic history and relevant experience to ensure you can succeed in your programme
- We let you know if your application has been successful

## FOUR POSSIBLE OUTCOMES

**CONFIRMED** We would like to offer you a place to study at AUT

**PROVISIONAL** You have met some of the criteria for entry to your chosen programme of study and we would like to offer you a provisional place to study at AUT. If you don't meet the rest of the requirements, for example University Entrance, then this offer will be withdrawn

**DECLINED** If you don't meet the entry requirements or all places are taken, check our website for other study options

**DECISION PENDING** We are unable to make a decision just yet, but will let you know when we expect to make a decision

## ACCEPT YOUR OFFER

# University admission to AUT bachelor's degrees

## For New Zealand citizens and residents and international students studying in a high school in New Zealand

To gain admission to bachelor's degrees, you must have met the requirements for University Entrance plus any specified admission requirements for a programme, such as specific subjects, portfolios and interviews.

For more information on entry requirements, including entry requirements for international students, refer to the AUT Calendar or visit [www.aut.ac.nz/calendar](http://www.aut.ac.nz/calendar)

**Please note:** AUT, like all other New Zealand universities, is required to manage enrolments. This is because of government policies that restrict the number of funded places available for domestic students in tertiary education.

### Admission categories

You may be granted University Entrance under one of the following categories:

- NCEA University Entrance
- Ad Eundem Statum admission (at an equivalent level) – this includes Cambridge International Examinations (CIE) and International Baccalaureate Diploma Programme (IB)
- Discretionary Entrance
- Special Admission

## Common University Entrance requirements

STANDARD	NCEA	CIE	IB <sup>2</sup>
<b>Overall</b>	Require <b>NCEA level 3</b> certificate which consists of 80 credits, including at least 60 credits at level 3 or higher. Can include up to 20 credits at level 2. <b>Note:</b> Credits to achieve NCEA level 3 may include unit standards from non-approved subjects. <b>Subject credits</b> Total of 42 level 3 credits including: • 14 credits from one approved subject • 14 credits from a second approved subject • 14 credits from a third approved subject	A minimum of 120 points on the UCAS Tariff <sup>1</sup> at A or AS level from an approved list (equivalent to NCEA approved subject list). Must include at least three subjects (excluding Thinking Skills) with grades D or above.	IB Diploma with minimum 24 points
<b>Numeracy</b>	At least 10 level 1 (or higher) numeracy credits (can be achieved through a range of subjects)	A minimum grade of D in IGCSE <sup>3</sup> mathematics or any mathematics subject at AS or A level.	Any mathematics subject – IB Group 5
<b>Literacy</b>	Total of 10 level 2 (or higher) literacy credits including: • 5 reading credits • 5 writing credits From specific standards in a range of NZQA English language rich subjects.	A minimum grade of E in English Language and/or English Literature subject at AS or A level.	Literature or language and literature (SL or HL) – IB Group 1, with English as the language.

1. UCAS (Universities and Colleges Admissions Services for the UK) Tariff = system which converts AS and A level grades into points.

2. New Zealand residents who have taken IB but have not been awarded the Diploma may apply for discretionary entrance.

3. IGCSE = International General Certificate of Secondary Education.

Where programmes require a specific subject, it is expected that a student will have achieved a minimum of 14 credits in that subject (unless indicated otherwise).

### NCEA approved subjects

For a list of NCEA approved subjects for University Entrance visit the NZQA website, [www.nzqa.govt.nz](http://www.nzqa.govt.nz)

### AUT language rich subject list

Classical Studies, Drama, English, Geography, Health Education, History, History of Art, Media Studies, Social Studies, Te Reo Māori or Te Reo Rangatira.

### Alternative pathways into AUT bachelor's degrees

Students who have just missed University Entrance or did not get into their chosen degree could consider enrolling in one of the foundation studies certificates offered at AUT. Please visit [www.aut.ac.nz/apply](http://www.aut.ac.nz/apply)



## Discretionary Entrance

Discretionary Entrance is available to applicants who have attained a high level of achievement in Year 12 and want to undertake university study.

International students can't apply for Discretionary Entrance.

### You can apply if you:

- Have not completed Year 13 in a New Zealand secondary school or have done Year 13 but not attempted to gain University Entrance
- Have not otherwise qualified for admission (or have attempted University Entrance)
- Are a domestic student (New Zealand or Australian citizen or permanent resident). If Australian, your most recent schooling must have been in New Zealand
- Are under 20 years of age on the first day of the semester in which you begin study and meet other requirements of the programme for which you apply

People who missed University Entrance in Year 13 may be considered for mid-year admission in the following year.

You can't apply for admission for Semester 1 if you studied in Year 13 after 1 June. However, you can apply for admission into Semester 2.

### Minimum academic criteria for Discretionary Entrance

- NCEA level 2 certificate endorsed with minimum of Merit or CIE/IB equivalent
- Minimum of 14 credits in each of four NCEA level 2 (or higher) subjects, at least three of which must be on the approved subject list
- Meet UE literacy and numeracy standards, or their equivalent.

The application is a two-step process. First, you indicate you want to apply through Discretionary Entrance on the standard application form. If you meet the criteria you are sent a second form in which you provide further information and a school recommendation.

The recommendation will provide proof of your maturity, motivation, capability and readiness to undertake degree-level study and also verify that you were not enrolled in Year 13 beyond 1 June in the year prior to admission. Please refer to the AUT Calendar or visit [www.aut.ac.nz/calendar](http://www.aut.ac.nz/calendar)

Please note: Applicants are considered on a case-by-case basis and must also meet other selection criteria for the programme for which they have applied. There is a non-refundable assessment fee of \$50.00.

### Admission at equivalent level (Ad Eundem Statum)

An applicant will be considered for Ad Eundem Statum admission if they:

- Have successfully gained University Entrance through CIE or IB or an approved qualification from a New Zealand secondary school of special character
- Have successfully completed a recognised foundation programme or other recognised tertiary qualification/study of at least 120 points at level 3, or at least 60 points at level 4 in one course of study and have completed Year 13 at a NZ secondary school, or equivalent.
- Have qualifications from an overseas secondary school or tertiary institution deemed by AUT to be sufficient for entry into an undergraduate degree programme.

Please note: Applicants will be required to supply an official academic transcript with their application.

## Bursary

If you sat Bursary (prior to 2004) rather than NCEA please refer to the AUT Calendar or visit [www.aut.ac.nz/calendar](http://www.aut.ac.nz/calendar)

## Special Admission

If you are over 20 years of age you can apply through Special Admission for degree-level study without a University Entrance qualification, if you are a New Zealand citizen or resident. You must be 20 years of age on or before the first day of the semester in which the programme commences. Your ability to succeed in your chosen programme will be taken into consideration.

## English language requirements

If you don't have English as your first language, you may have to show evidence of your English language skills.

International students studying at secondary school and applying for University Entrance must achieve UE Literacy through New Zealand secondary school qualifications NCEA, CIE or IB. IELTS can't be substituted.

In all other cases another form of English language testing is required. Minimum IELTS requirements for each programme are included on the relevant pages in this publication. For other recognised English tests and more information, visit [www.aut.ac.nz/englishrequirements](http://www.aut.ac.nz/englishrequirements)

## International students

Contact us for information regarding studying at AUT if you're not a citizen or permanent resident of New Zealand or Australia, or a citizen of the Cook Islands, Niue or Tokelau islands.

Visit [www.aut.ac.nz](http://www.aut.ac.nz) for entry requirements for specific countries.

Email: [internationalstudy@aut.ac.nz](mailto:internationalstudy@aut.ac.nz)

# Fees & scholarships

**Cost is an important factor when thinking about university study. This page gives you an idea of the approximate tuition fees at AUT, and different options to help you fund your education including scholarships, student loans and allowances.**

To give you an idea of approximate costs, the 2018 tuition fees are shown below (based on full-time study and completing 120 points per year). All fees are in NZ dollars and include GST. The 2019 tuition fees will be advertised on [www.aut.ac.nz/fees](http://www.aut.ac.nz/fees) as soon as they have been set.

## Domestic student tuition fees

Eligible first-time domestic students are entitled to one year of fees free.

### Undergraduate programmes

Fee (per year)	Approximately \$3,225.00–\$7,190.00 <sup>1</sup>
----------------	--

### Doctor of Philosophy

Fee (per year)	Approximately \$6,633.00 <sup>1</sup>
----------------	---------------------------------------

### Other postgraduate programmes

Fee (per year)	Approximately \$4,188.00–\$8,375.00 <sup>1</sup>
----------------	--

1. Part-time students pay a proportion of the fee based on the number of academic points they are studying.

## International student tuition fees

### Undergraduate programmes

Fee (per year)	Approximately \$13,770.00–\$48,552.00
----------------	---------------------------------------

### Doctor of Philosophy

Fee (per year)	Approximately \$35,880.00 <sup>1</sup>
----------------	--

### Other postgraduate programmes

Fee (per year)	Approximately \$29,830.00–\$35,880.00
----------------	---------------------------------------

1. International doctoral students who conduct the majority of their studies in New Zealand will be eligible for the approved 2018 domestic tuition fees of \$6,633.00.

## Other fees you may have to pay:

- 2018 Compulsory Student Services Fee – \$627.10 for 120 points or \$5.23 per academic point
- 2018 Building Levy – \$69.60 for 120 points or \$0.58 per academic point
- Additional fees for course materials or elective papers (check with your faculty if there are additional fees for your programme)

Please note that you have to pay your fees in full by the date specified on your fees invoice.

To find out more about fees call **+64 9 921 9779** or the AUT Student Hub on **0800 AUT UNI** (0800 288 864).

## Scholarships and awards

Scholarships and awards are a great way to fund your university study. There is a wide range of scholarships and awards available to AUT students at all stages of their study. Visit the scholarships website for a current list of scholarships offered by AUT and external funders, as well as application forms and closing dates. You can also contact AUT's Scholarships Office for advice on scholarships, awards and the scholarship application process.

To find out more call **+64 9 921 9837** or visit [www.aut.ac.nz/scholarships](http://www.aut.ac.nz/scholarships)

## Student loans and allowances<sup>1</sup>

If you are a full-time domestic student, you may qualify for a student loan or allowance. Student loans and allowances are administered and paid by StudyLink. The application process can take some time, so it's a good idea to apply early. You can apply for a student loan or student allowance before your enrolment at AUT is complete.

To find out more call **0800 88 99 00** or visit [www.studylink.govt.nz](http://www.studylink.govt.nz)

1. For domestic students only

## Help with planning and budgeting

We know that studying can be hard on your finances, and we can help students manage their money and stay within budget. We also assist students in financial hardship through food and transport grants, and provide assistance with student loans and allowances.

## StudyLink Sussed website

A useful financial resource is the StudyLink Sussed website. The website has handy tools, tips and information to help you plan and understand the costs you will have while studying.

Visit [www.studylink.govt.nz](http://www.studylink.govt.nz)

**Check if you're eligible for fees-free study in 2019.**  
Visit [www.aut.ac.nz](http://www.aut.ac.nz)



# Find out more

## Visit our website

For the latest information on AUT programmes and to keep up-to-date with what's happening at AUT visit [www.aut.ac.nz](http://www.aut.ac.nz)

## Call or email us

To speak to one of our friendly advisors call the AUT Student Hub on **0800 AUT UNI** (0800 288 864). If you need help with your application to study at AUT, want more information or would like to order a brochure – we're here to help.

You can also email any questions you have to [futurestudents@aut.ac.nz](mailto:futurestudents@aut.ac.nz)

International students should email [internationalstudy@aut.ac.nz](mailto:internationalstudy@aut.ac.nz)

## Secondary schools

If you are a secondary school teacher or career advisor, our Future Students Team can help you with any questions you may have. Contact the team on **+64 9 921 9239**.

## AUT Open Day

Our Open Day at the City Campus will showcase everything AUT has to offer to help you make an educated decision about university study. To find out more visit [www.aut.ac.nz/live](http://www.aut.ac.nz/live)

## Connect with us

AUT has a range of social media channels to keep our students and the general public aware of what is going on around the university.

### Connect with us now:



@autuni

#autuni

## Drop in and see us

### AUT Student Hub

#### City Campus

Level 2, ground entry, WA building, 55 Wellesley Street East, Auckland

#### North Campus

AS building, 90 Akoranga Drive, Northcote, Auckland

#### South Campus

MB building, 640 Great South Road, Manukau, Auckland

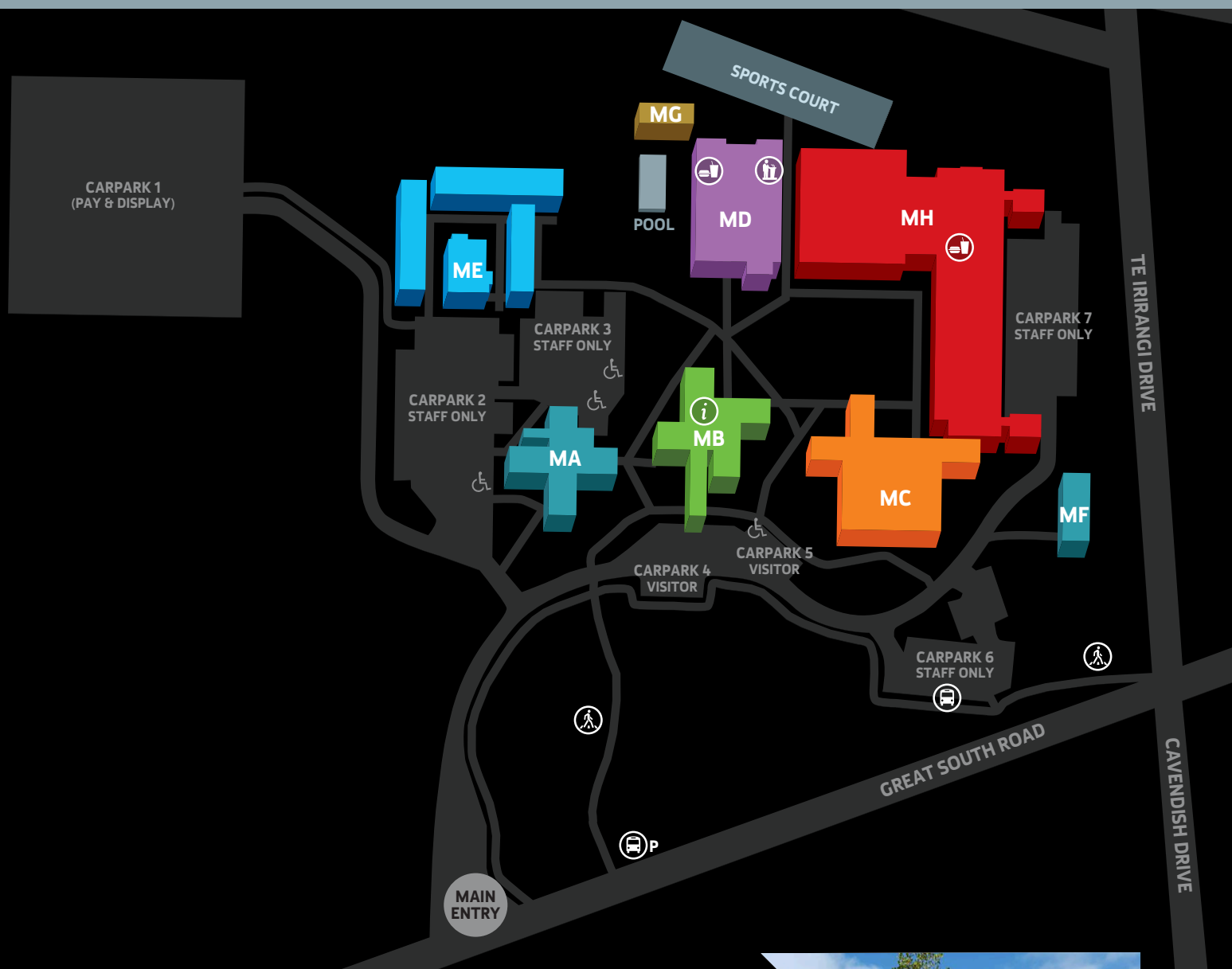
## Campus tours

If you want to check out the campus and facilities, contact us and we will arrange a campus tour for you and your family. Call **0800 AUT UNI** (0800 288 864) for more information.










This booklet is printed on paper which is certified by the Forest Stewardship Council (FSC). It is manufactured using FSC Mix source pulp from well managed and legally harvested forests. The inks are 100 percent vegetable oil based and the printer is FSC certified.

# Campus map



## Key

-  AUT Student Hub
-  Café
-  Conference facility
-  Pedestrian access
-  Intercampus shuttle bus stop
-  Public bus stop
-  Mobility parks

## South Campus

640 Great South Road  
Manukau, Auckland





**0800 AUT UNI (0800 288 864)**

Auckland University of Technology  
futurestudents@aut.ac.nz  
www.aut.ac.nz

**International future students**

internationalstudy@aut.ac.nz  
+64 9 921 9099

**CITY CAMPUS**

55 Wellesley Street East, Auckland Central

**NORTH CAMPUS**

90 Akoranga Drive, Northcote, Auckland

**SOUTH CAMPUS**

640 Great South Road, Manukau, Auckland

**Connect with us now:**

@autuni

#autuni