

INDICATORS OF POSITIVE CHANGE

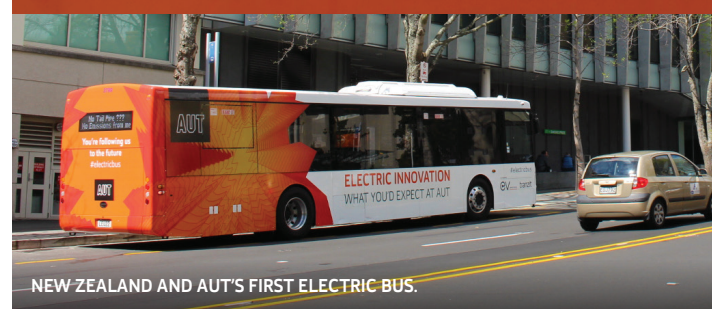
In response to the declaration of a climate emergency and the COVID-19 pandemic, AUT has revised some of its original targets since the first roadmap issue. The University has also committed to halving its carbon emissions by 2025.

- Ensure all undergraduate programmes develop sustainability literacy, values and practices, consistent with the AUT Graduate Profile.
- Increase improved online curriculum delivery with its associated carbon savings.
- Increase the number of mission-led and large-scale projects on the critical issues of our time, including projects which are tackling aspects of the climate emergency.
- Support local companies that replace international supply chains through R&D.
- Establish partnerships with external organisations based on working together towards the United Nations' SDGs and/or becoming low carbon.
- Generate sustainability research projects across AUT that attract external financial support.
- Demonstrate innovation in sustainability professional practice in curriculum and our research.
- Halve our carbon emissions.
- Halve our waste to landfill.

You can find a more detailed companion document for this roadmap and AUT's planned sustainability actions at aut.ac.nz/sustainability.



You're following us
to the future
#electricbus



AUT SUSTAINABILITY ROADMAP TO 2025

UPDATE
AUGUST 2020

OUR SUSTAINABILITY MISSION

Great graduates for a sustainable world

OUR SUSTAINABILITY VISION

AUT is committed to advancing knowledge and understanding of the issues and opportunities around creating a sustainable future for people and the planet and its biological ecosystems.

The United Nations' Sustainable Development Goals (SDGs) contextualise AUT's commitment to sustainability, calling on all countries to end poverty, protect the planet and ensure prosperity for all.

AUT recognises that contributing to the SDGs in a meaningful way requires more than a 'business as usual' contribution; there is a need for a step change in human behaviour before society can meet these goals. AUT is committed through research, teaching and the management of its own operations, to be part of this step change.

AUT INVITES OUR STUDENTS AND STAFF TO BE PART OF MAKING AUT MORE ACTIVELY SUSTAINABLE. HERE ARE SOME THINGS YOU CAN DO:

- Join our work to increase student options for majors, minors and papers with sustainability content and approaches
- Explore and expand research that contributes to the United Nations' Sustainable Development Goals
- Participate in one of our change-making collaborations: Generation Change Challenge (students), Equity Challenge, Carbon Challenge, Biodiversity Challenge
- Work with your team to review your procedures, policies and operations to find opportunities to be more sustainable in work practices
- Reduce energy usage, turn equipment off whenever you can
- Try more plant-based food options
- Reduce travel and/or find ways to use low emission travel
- Reduce waste – get a renewable takeaway cup, recycle, use less paper, throw away less food (ask for smaller portions)
- Contribute to our biodiversity efforts through plantings, pest management and researching biodiversity management practices



CORE CONCEPTS

AUT's sustainability vision encompasses three core concepts which apply and intersect across all areas of our activities. They are:

Mauri ora | Wellbeing

Wellbeing is understood here in an expanded sense as we recognise that human wellbeing is dependent upon the wellbeing of the planet, and the web of life that supports and resources our endeavours. Actions and initiatives in this area include collaborations with key stakeholders in wellbeing initiatives as well as discovery processes around equity, ethics, and civics.

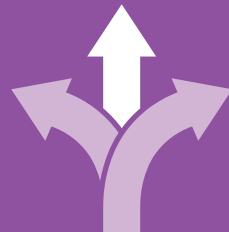
This focus area links to multiple SDGs including no poverty, gender equality, good health and wellbeing, reduced inequalities as well as peace, justice and strong institutions.



Ki Tua | Futures

Viable futures are inherent to sustainability and so a future thinking for wellbeing and prosperity is key. Actions and initiatives in this area include speculative or disruptive technologies and systems.

This focus area links to a number of SDGs including climate change action as well as industry, innovation and infrastructures.



Whanaungatanga | Connectivity

The wellbeing of planet and people is enabled by complex global systems, which connect across diverse regions, areas and functions. Actions and initiatives in this area include biodiversity conservation that encompasses socio-ecological perspectives, exploration of local and global ecosystem processes, investigation into ecologically responsible industries, and urban systems as well as infrastructures. This focus area links to multiple SDGs including life below water, life on land, sustainable cities and communities, and responsible consumption and production.



OUR SUSTAINABILITY RESPONSIBILITIES

We are collectively committed to:

- Ensuring all our students have opportunities to develop sustainability related knowledge and understandings of the effective and innovative application of solutions in their fields of endeavour
- Contributing to the 17 United Nations' Sustainable Development Goals (SDGs), to inclusive public discussion and debate about these goals, and to positive change – organisationally and nationally
- Reducing our carbon footprint towards net zero greenhouse gas emissions (from buildings, travel, energy and waste)
- Working with others, locally, nationally, and internationally, recognising that while sustainability is a global goal, its problems and solutions are situated in local ecosystems and communities
- Assessing our progress through setting targets, monitoring and reporting against the Sustainability Roadmap

OUR DIRECTIONS

The following theme headings are from AUT Directions 2025 and are used here to indicate the interweaving of the Sustainability Roadmap and the University's overarching educational and research intentions.

THEME 1

CREATING EXCEPTIONAL LEARNING EXPERIENCES

- We will ensure sustainability concepts are included in the curriculum.
- We will ensure all students have learning experiences that maximise their opportunities to graduate as sustainability literate citizens and critical thinkers.
- We will support academic staff to build their sustainability competencies and knowledge in environmental and sustainability education.

THEME 2

DISCOVERY AND APPLICATION OF KNOWLEDGE FOR WELLBEING AND PROSPERITY

- We will support research, scholarship and consultancy activities that contribute to or develop knowledge and understanding of sustainability issues.
- We will share our sustainability discoveries and developments in ways that allow them to be widely used.
- We will engage with business, professions, industry and the community to promote sharing of ideas, expertise and best practice on sustainability.

THEME 3

RESPONDING TO OUR PLACE IN THE WORLD

- We will work with Māori towards bicultural understandings and responses to the issues of sustainability for Aotearoa New Zealand.
- We will demonstrate AUT's environmental, social, cultural and economic responsibilities through partnerships, initiatives and activities.
- We will be an effective and strong advocate for sustainability in the communities we serve.
- We will establish partnerships with other organisations working towards the UN's SDGs and be an active contributor to the Australia, New Zealand and Pacific Sustainable Development Solutions Network.

THEME 4

BUILDING OUR POSITION AS NEW ZEALAND'S UNIVERSITY OF TECHNOLOGY

- Through action-oriented research and a focus on end-users, we will focus on innovation and application and contribute to policies, processes and products that generate positive change.
- We will work with industry and professions to guarantee the greatest chance of success.
- We will work with others to develop and implement solutions as exemplars of technological excellence.

THEME 5

BEING A PLACE WHERE PEOPLE LOVE TO WORK AND LEARN

- We will ensure that our built environment reflects best practice and encourage use of our campuses as living laboratories for sustainability learning, teaching, research and action.
- We will build on our current efforts to reduce, reuse, and recycle, including through sustainable travel and reduced consumption of non-renewable resources.
- We will embed sustainability into university processes and systems and manage our facilities and services efficiently and in a customer-centric manner.
- We will create healthy, safe, accessible and inclusive environments for AUT students, staff and other stakeholders, creating a sense of community and belonging where everyone is valued.
- We will ensure that understanding of and expertise in sustainability is developed in our staff.

