

AUT

TE WĀNANGA ARONUI  
O TĀMAKI MAKAU RAU

# ART & DESIGN

UNDERGRADUATE PROGRAMME GUIDE 2025



AUCKLAND  
UNIVERSITY  
OF TECHNOLOGY

# Nau mai, haere mai ki AUT WELCOME TO AUT

E ngā mana, e ngā reo  
E te iti, e te rahi  
E ngā mātāwaka o ngā tōpito o te ao  
Ngā mahuetanga iho e kawē nei i ngā  
moemoeā o rātou mā  
Tēnā koutou katoa

Piki mai rā, kake mai rā,  
Nau mai, haere mai ki tēnei o ngā wānanga  
Whakatau mai i raro i te korowai āhuru o Te Wānanga  
Aronui o Tāmaki Makau Rau

Te whakatupu i te kōunga, i te mana taurite me ngā  
tikanga matatika, i ngā pūkenga ako,  
i ngā pūkenga whakaako me te āta rangahau hei hāpai  
i ngā hāpori whānui o te motu, otirā, o te ao.

To the prestigious, the many voices  
The few, the great  
To those of all races and creeds  
We who remain to fulfil the dreams and  
aspirations of the ancestors  
Greetings one and all

Climb, ascend  
Embark on the journey of knowledge  
Let us at AUT embrace and empower you  
To strive for and achieve excellence

To foster excellence, equity and ethics in  
learning, teaching, research and scholarship,  
and in so doing serve our regional, national  
and international communities.

### Cover

The cover design represents a tukutuku (ornamental lattice work) panel with the Poutama pattern woven onto it. This pattern symbolises levels of attainment, advancement, and personal growth, striving for betterment. The Poutama reflects what AUT does for its students: educate, guide and support them on their journey into a future they define, and we prepare them for. The perspective of the design enhances the concept of the journey. The overlaid design elements on top of the cover pattern show commitment to Te Tiriti o Waitangi and Te Ao Māori being at the foundation of everything; an underlying base to support and enhance all aspects of AUT.

Disclaimer: Although every reasonable effort is made to ensure accuracy, the information in this document is provided as a general guide only for students and is subject to change. All students enrolling at AUT should consult its official document, the AUT Calendar, which is available online at [aut.ac.nz/calendar](https://aut.ac.nz/calendar), to ensure that they are aware of, and comply with, all regulations, requirements and policies. The information contained in this programme guide was correct at the time of print, December 2023.

# Ngā ihirangi CONTENTS

## About AUT

- 02 Why study at AUT?
- 04 Student life

## Course information

### Bachelor of Design Te Tohu Paetahi mō te Hoahoa

- 06 Overview
- 09 Animation, Visual Effects and Game Design
- 10 Communication Design
- 11 Fashion Design
- 12 Industrial Design
- 13 Interaction Design
- 14 Spatial and Interior Design

### Bachelor of Visual Arts Te Tohu Paetahi mō Toi Ataata

- 16 Overview
- 19 Painting, Printmaking and Drawing
- 20 Photography, Sculpture and Moving-image

- 21 Diploma in Design Tītohu mō te Hoahoa
- 22 Diploma in Visual Arts Tītohu mō te Toi Ataata
- 24 Overview of our postgraduate qualifications

## Applying for your programme

- 26 University entrance
- 28 Fees and scholarships
- 30 How to apply
- 32 Find out more

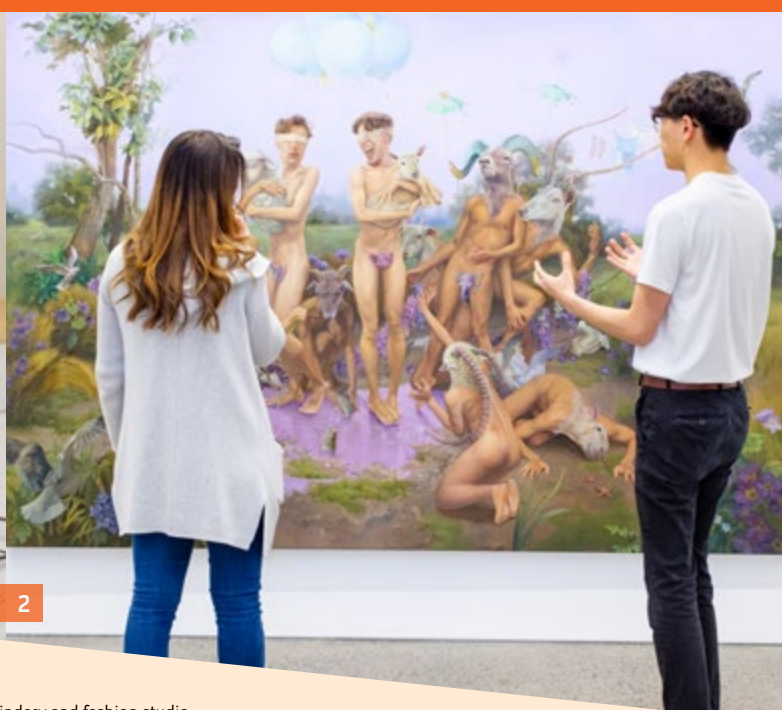




# He aha ai e ako ki AUT?

## WHY STUDY AT AUT?

Scan this QR code for details about courses, where your study could lead and stories about our great graduates and students.



1 & 3 You have access to industry-standard facilities including a digital fabrication lab, bindery and fashion studio  
2 Showcase your work at one of art and design's showcases or festivals 4 The City Campus is home to Te Wai Ngutu  
Kākā Gallery – AUT's art gallery

### New Zealand's leading modern university

AUT is proud to be one of the world's best modern universities. Times Higher Education has ranked us in the top 1% of universities in the world, the top 50 universities under 50 years of age, the top 5% of universities for social impact, and number one in Aotearoa New Zealand for international outlook. The QS World University Subject Rankings also place us in the world's top 200 art and design schools. Study with us and you'll join New Zealand's most diverse and vibrant university, and develop the skills for rewarding careers in a wide range of industries and professions. You work in shared studio spaces, surrounded by innovation and technology to fuel your creativity. AUT is where talent meets opportunity, and we're proud of the success of our students, in Aotearoa and around the world.

### Preparing you for the future

With an AUT degree you'll graduate with a qualification that is widely regarded, and with valuable experiences and industry connections for your future career. We're connected to an extraordinary range of organisations, and as part of your studies you could work with one of our many industry partners. You learn from academic staff who are still actively involved in their professional fields, and we often invite industry experts to come in and share their knowledge with you. You may also be able to showcase your work to industry and the media at the AUT art and design festival. Your degree can be as unique as you are – you can include subjects from across AUT and tailor your studies to your interests. And if you want another way into AUT, our diploma programmes are a great way to start your studies and gain the confidence to succeed at university.

### Outstanding facilities and equipment

To make sure your learning is relevant to your future career, you have access to top facilities and industry-standard equipment, including photographic facilities and lighting studios, specialist printmaking workshops, 3D labs, bindery workshops, rapid prototyping and 3D printing facilities, and one of only two motion capture studios in the country. You'll study in modern buildings that don't just win architecture awards but also offer excellent environments where you can collaborate with your classmates and develop skills that help you stand out to employers. We're proud of our five-star ranking for teaching and facilities, awarded by the world university rankings organisation QS. Our state-of-the-art buildings were created using sustainable principles and offer inviting lecture theatres, auditoriums and research spaces; offering you the perfect environment for your studies.

### Research that shapes tomorrow

Our research is focused on real-world impact, and we're proud of our reputation as a leading research university. As an AUT student you could learn from globally renowned researchers who are experts in areas as diverse as design for health and wellbeing, or sustainable practices for the fashion industry. We deliver leading research in a number of areas within art and design, and our discoveries are widely used in New Zealand and the world. Our research often feeds back into the classroom, and as a student you may even be able to contribute to these research discoveries.



# Oranga Taura

## STUDENT LIFE

**AUT is a modern and innovative university with endless opportunities, and a supportive culture that celebrates diversity and is committed to improving our local and global communities. Our students are at the heart of everything we do, and we're proactive in enabling them to succeed and be ready for any challenge in front of them.**

### Our Student Hubs – your place to get the support you need

AUT offers some of the most comprehensive student support services in New Zealand, and our Student Hub is where you can learn more about these services. Our professionally qualified staff include social workers and occupational therapists who can support our diverse student community. Our Student Hubs are available both online and across our campuses, so you can get help and support when and where you need it.

### Getting you started on your uni journey

Studying at university is exciting and can be quite an adjustment. That's why AUT helps new students transition to university life by delivering a wide-ranging orientation programme at the start of each semester. We also offer activities throughout the semester to transition you into university life. AUT's app also provides up-to-date news, events, and information about AUT anytime, anywhere.

### Helping you achieve your academic goals

We do everything we can to help you achieve your academic goals and set you up for a successful career. You'll have access to all the people, resources and technology you need to make the most of your learning opportunities. Our services include academic skills support through our library and their learning services, peer mentoring for help with assessments, adaptive technology, 24/7 academic support through Studiosity, free technology access and financial assistance, as well as tailored support for our postgraduate research students.

### Supporting your wellbeing

Our students' health and wellbeing are our highest priority, and AUT is experienced in delivering support to aid students' overall wellbeing. This includes services like 24/7 security on campus; peer support from over 300 student ambassadors, navigators, peer advisors, RUOK advisors and the TalkCampus app; financial assistance; medical, learning and IT support, as well as physical and mental wellbeing support. We actively encourage students to be aware of their wellness needs – mind, body, and spirit. As an AUT student you have access to free and confidential counselling sessions, peer support and programmes to develop better self-knowledge and resilience.

### Enabling opportunities for a vibrant uni experience

We want you to make the most of university life, and have fun and grow during your time with us. That's why we offer a range of spaces and initiatives for students including clubs, events, sporting opportunities and state-of-the-art recreational facilities. Our clubs are student-led and cover social, sustainability, cultural and academic interests. If you can't find something you enjoy, you're always welcome to create something new!

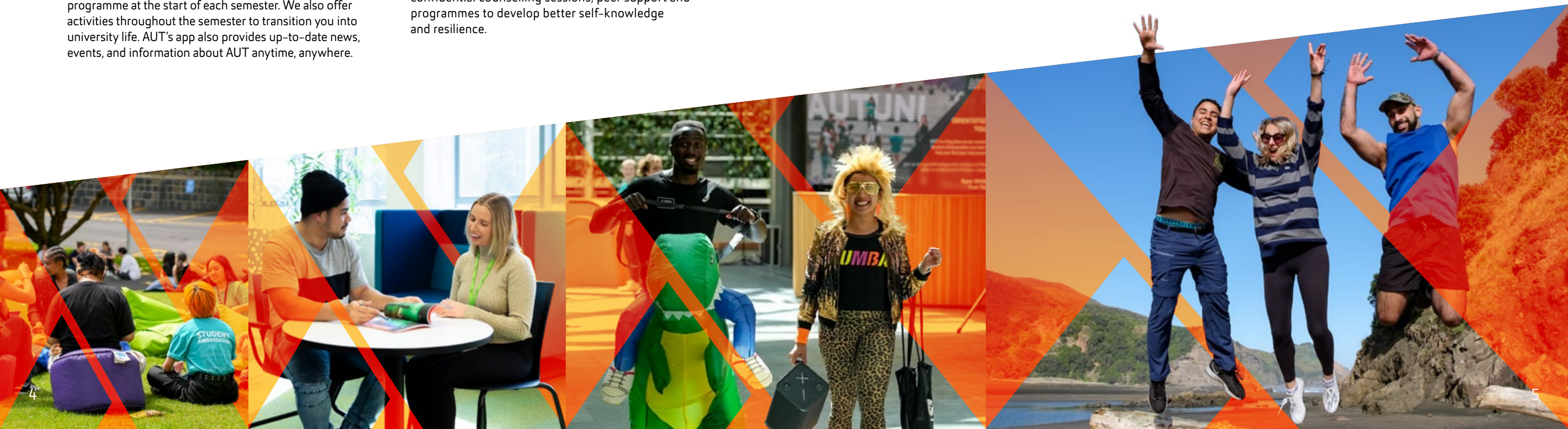
### Celebrating our people

We celebrate diversity and our commitment to Te Tiriti o Waitangi with passion, curiosity and pride. We have a strong commitment to Māori advancement, and Pacific wellbeing and success, and have dedicated teams to support all students at AUT. We were the first university in New Zealand to achieve the Rainbow Tick. We're committed to equity of access and opportunity for students, staff and visitors, and support the principles of Kia Ōrite: Code of Practice for an inclusive tertiary environment.

Our dedicated teams include disability services, and rainbow and international student support. Our Student Association (AUTSA) advocates and represents the interests of all AUT students, and shares students' voices through its Debate magazine.

### Beyond learning and into employability

Our services, competitions and awards offer you enriching life experiences that will support your career once you graduate. These opportunities can help you gain an edge in the marketplace through workplace experience, international exchanges, industry connections, and CV and interview preparation for when you're ready to start your career. Our Innovation Challenge is also a great incubator for your entrepreneurial ideas and can help you bring your ideas to market.





# Bachelor of Design

## Te Tohu Paetahi mō te Hoahoa

### Overview

Study with us and we'll help you turn your creative ideas into reality. AUT's design degree responds to the changing nature of design careers by focusing on the connections between different design disciplines, the importance of mātauranga Māori, and new and emergent technologies. You'll become familiar with the growing ethical and moral responsibilities of design professionals, and will be ready to use your design skills to create a better future. You'll also have the opportunity to showcase your work at the annual AUT Art & Design Festival.

#### Entry requirements

##### Minimum entry requirements

University Entrance or equivalent in approved subjects. Refer to the AUT website for further information.

##### Useful New Zealand school subjects

Classical Studies, Computing, Construction and Mechanical Technologies, Design (Practical Art), Design and Visual Communication, Digital Technologies or Hangarau Matihiko, English, Geography, Hangarau, Hauora, Health, History, History of Art, Mathematics/ Pāngarau, Media Studies, Music Studies, Ngā Mahi a Rēhia, Ngā Toi, Ngā Toi Ataata, Ngā Toi Puoro, Painting (Practical Art), Pāngarau, Photography (Practical Art), Physics, Printmaking (Practical Art), Processing Technologies, Psychology, Pūtaiao/Science, Sculpture (Practical Art), Technology/Hangarau, Te Ao Haka, Te Reo Māori, Te Reo Rangatira, Technology, Visual Arts

##### English language requirements

IELTS (Academic) 6.0 overall with all bands 5.5 or higher; or equivalent

##### Don't meet the entry requirements?

Consider starting with the Diploma in Design Titohu mō te Hoahoa – refer to page 21 for more details.

BDes | AK3619

#### QUICK FACTS

Level	7
Points	360
Duration	3 years full-time, part-time available
Campus	City
Starts	3 March 2025

#### What this qualification covers

This programme is highly flexible and you can build your degree in a way that reflects your interests.

To graduate with this degree you need to complete:

##### Core courses (120 points)

These are courses all students in this degree need to take. They cover fundamental design principles and processes, and help you decide which subject to focus on later in your studies. One of the core courses is the Integrated Design Practice you complete in your final semester.

##### Your chosen major (120 points)

Your major is the subject area you want to specialise in. This makes up one third of your degree. You can view the list of majors in this degree on page 8.

##### Flexible component (120 points)

You can choose one of the following options

- Two minors (60 points each); or
- A minor (60 points) and elective courses (60 points); or
- A second major (120 points)

Your second major, minor(s) and elective courses can be from art and design or different AUT degrees.

YEAR 1		YEAR 2		YEAR 3	
SEMESTER 1	Introduction to Design Practice30 PTS	Major course30 PTS		Major course30 PTS	
	Making & Media15 PTS	Flexible component15 PTS		Flexible component15 PTS	
	Mahitahi   Collaborative Practices15 PTS	Flexible component15 PTS		Flexible component15 PTS	
SEMESTER 2	Major course30 PTS	Major course30 PTS		Integrated Design Practice60 PTS	
	Flexible component15 PTS	Flexible component15 PTS			
	Flexible component15 PTS	Flexible component15 PTS			

Core courses

PTS: Points



"At AUT, you'll be surrounded by lecturers who will support you in every way that they can, as well as other students who you will end up loving sharing your journeys with. The facilities that are provided at AUT have strengthened my love for design and for studying. They provide you with everything to help you create whatever your mind comes up with. I like to call it the mixing pot of dreams. It's a great place to collaborate and learn with others, sharing the journey together. I especially love the fact that everybody is extremely open and loving towards my ideas, however they still offer solid and understanding feedback on my designs."

##### Hāriata Mann

Ngāi Tūhoe (Ngāti Kahungunu ki te Wairoa)

2nd-year student, Te Tohu Paetahi mō te Hoahoa – Bachelor of Design in Communication Design with a minor in Te Reo Māori



Scan this QR code for details about courses, where your study could lead, and stories about our great graduates and students.

# Bachelor of Design Te Tohu Paetahi mō te Hoahoa

Overview continued

### Majors

Choose one of these majors as part of your degree:

- Animation, Visual Effects and Game Design
- Communication Design
- Fashion Design
- Industrial Design
- Interaction Design
- Spatial and Interior Design

Refer to pages 9 to 14 for more details on each of these majors.

If you want to include a second major in your degree, you can choose another subject from the list above or can see more options from different AUT degrees on [aut.ac.nz/majors-minors](https://aut.ac.nz/majors-minors)

### Minors

A minor is smaller than a major. It usually consists of four courses. If you decide to include a minor or two minors in your degree, you could choose from:

- Animated Drawing
- Cinematic Arts
- Contemporary Pacific
- Creative Entrepreneurship
- Design for Health
- Design for Social and Environmental Justice
- Digital Fabrication
- Experimental Surface Design
- Extended Reality
- In Print: Publishing Practices
- Motion Capture
- Photographic Practice
- Temporary Practices / Temporary Publics

For more information on each of these minors and to see even more minors from other subjects visit [aut.ac.nz/majors-minors](https://aut.ac.nz/majors-minors)



### Build your degree on our website

Visit our website to build your own degree and see what your three years of study could look like. Simply scan the QR code on page 7.

#### Possible combinations include:

- Bachelor of Design Te Tohu Paetahi mō te Hoahoa in Industrial Design with minors in Design for Health & Sustainable Enterprise (two minors)
- Bachelor of Design Te Tohu Paetahi mō te Hoahoa in Fashion Design with a minor in Creative Entrepreneurship (one major, one minor, plus elective courses of your choice)
- Bachelor of Design Te Tohu Paetahi mō te Hoahoa in Communication Design & Marketing (two majors)

# Bachelor of Design Te Tohu Paetahi mō te Hoahoa Animation, Visual Effects and Game Design

Scan this QR code for details about courses, where your study could lead, and stories about our great graduates and students.



This major prepares you for the demands of a career in the digital creative industries by giving you a solid grounding in animation, visual effects and game design. You'll have access to world-class facilities like our green screen, motion capture and virtual reality studios, and our high-end computer labs with a suite of industry standard software. We also have strong and long-established links with industry, and you'll have opportunities to gain professional experience while studying.

### What this major covers

#### YEAR 1

In the first year, you'll study courses that introduce you to mātauranga Māori, design principles, methods, critical thinking and creative processes, and will learn the foundations of animation, visual effects and game design. In a studio-based environment, you'll work individually and in groups using industry-standard software in our computer labs and digital video production spaces. You'll also start your courses from your second major, minor(s) or elective courses.

#### YEAR 2

You'll study animation, visual effects or game design, working on a series of practice-based projects. You'll also further your critical analysis and trouble-shooting skills, content creation, communication and narrative strategies. Industry networking opportunities include external guest speakers and workshops. You'll also continue with your minor/elective courses or courses from your second major.

#### YEAR 3

You'll complete a major self-directed design project. Projects can be individual, in partnership with another student or undertaken as a group project. You can also carry out workplace experience. Expert industry speakers and workshops offer opportunities for networking and feedback. You'll also complete your final courses from your second major, your minor(s) or elective courses in the first semester. The year ends in a public exhibition where you can show your work to the public.

### Career opportunities

- 2D/3D animator
- Visual effects artist
- Games designer
- Virtual reality artist
- Interactive designer
- Motion capture artist
- Motion designer
- Working in the film industry



"There were a few times at university where I would put on a motion capture suit and jump into a capture volume. I could see a real-time virtual version of myself react to my every move and motion. It was amazing to see such a convincing display of subtle reaction, push and pull, changes in momentum, and a language of body and performance. My job now covers a few different tasks in the realm of 3D animation. I have a lot of creative freedom and constructive input into the animations, and the content is centred around my own cultural heritage as a Māori creative. I get to do exactly what I've always wanted to do since I was young. It's my dream job."

#### Reuben Terehu Shortland

Ngāti Hine

3D Animator, Metia Interactive

Bachelor of Design in Digital Design

Bachelor of Design Te Tohu Paetahi mō te Hoahoa  
**Communication Design**

Scan this QR code for details about courses, where your study could lead, and stories about our great graduates and students.



Communication design focuses on generating content and visually communicating ideas, messages and meaning to respond to societal, environmental and commercially relevant themes and issues. You'll learn to apply graphic and digital skills, create typographic and visual meaning in graphic design, branding, illustration, photography, advertising, motion graphics and art direction. You'll work in open studios and computer labs with industry standard software, and have access to a printmaking lab, risograph, photographic studio and book bindery.

**What this major covers**

**YEAR 1**

In the first year, you'll study courses that introduce you to mātauranga Māori, design principles, methods, critical thinking and creative processes. Experimenting with different media, you'll use type and image to exploit graphic design conventions and communicate ideas. In the second semester, you'll explore design systems, industry case studies, and information and content management to convey messages to an audience. You'll also take courses from your second major, minor(s) or elective courses.

**YEAR 2**

You'll work on studio projects and workshops, exploring a range of communication design approaches including branding, campaign strategy, visual identity and social impact projects. You'll become familiar with industry-standard image-making processes and technologies and professional workflows, and focus on image-making and narrative structures, typography, illustration or moving images, depending on your chosen area of design. You'll also continue with your courses from your second major, your minor(s) or elective courses.

**YEAR 3**

You'll complete a significant design project where you can do self-directed creative research that is relevant to your personal and professional career goals. This project will form a substantial part of your communication design portfolio. You'll also complete your final courses from your second major, your minor(s) or elective courses in the first semester of the third year. The year ends in a public exhibition where you can show your work to the public.

**Career opportunities**

- Advertising and brand creative
- Online and social media manager or content creator
- Creative or account director
- Graphic or print-based designer
- Publication or information designer
- Photographer or videographer
- Motion graphic designer
- Illustrator



"My highlight at AUT was getting to spend time with my university classmates in the open studio in the design building. It was a place where all design students could study, relax or enjoy good food. I especially enjoyed the late nights in the open studio. I now use my graphic design and business knowledge as I design social creatives for a range of our clients. With the huge number of clients we have, my day never looks the same and I'm always kept on my toes trying to find an even better way to communicate through design."

**Justine Macabasco**  
Digital Content Creator, Sprocket Digital  
Bachelor of Design in Communication  
Design & Bachelor of Business in Marketing,  
Advertising, Retail and Sales

Bachelor of Design Te Tohu Paetahi mō te Hoahoa  
**Fashion Design**

Scan this QR code for details about courses, where your study could lead, and stories about our great graduates and students.



This major focuses on conceptualising and developing innovative products that respond to major changes in the consumption of fashion. Our fashion studios give you access to industry-standard machinery and digital technologies, and a suite of art and design labs is available for you to extend your design practice. As a fashion design student you'll work predominantly in a studio-based environment.

**What this major covers**

**YEAR 1**

In the first year, you'll study courses that introduce you to mātauranga Māori, design principles, methods, critical thinking and creative processes. You'll also start to develop your fashion design practice by learning the basics, including drawing, concept development, pattern cutting and sewing. You'll also take the first courses from your second major, minor(s) or elective courses.

**YEAR 2**

Working in studios, you'll explore unconventional pattern-making methods, undertake 'live' industry projects, and will align your design practice with contexts that reflect a personal design direction. You'll also continue with your courses from your second major, your minor(s) or elective courses.

**YEAR 3**

You'll complete a significant design project where you can do self-directed creative research that is relevant to your personal and professional career goals. You can also carry out workplace experience. You'll complete your final courses from your second major, your minor(s) or elective courses in the first semester of the third year. The year ends in a public exhibition where you can show your work to the public.

**Career opportunities**

- Fashion designer
- Fashion writer
- Design assistant
- Production manager
- Fashion buyer or merchandiser
- Fashion marketing or PR



"The freedom of creativity and self-expression alongside the challenge of new and interesting techniques offered within this degree really appealed to me. Rather than specialising in the second year, AUT allows prospective students to study fashion design from the start. This appealed to me and I feel that the structure of the course has been extremely beneficial in enabling me to kickstart my journey into the fashion industry. We're encouraged to step outside of our comfort zones and channel innovative thinking into every project. As a result, I feel that I've developed my skillset, having grown more confident about sharing and critiquing my ideas. Moreover, the feedback I've received throughout the ideation and construction process has been invaluable."

**Nikki Cupples**  
3rd-year student, Te Tohu Paetahi mō te Hoahoa - Bachelor of Design in Fashion Design with a minor in Creative Entrepreneurship



## Bachelor of Design Te Tohu Paetahi mō te Hoahoa Industrial Design

Scan this QR code for details about courses, where your study could lead, and stories about our great graduates and students.



Industrial design focuses on 'Good design for a better world'. Products you'll design are tangible, three-dimensional crafted or manufactured objects, with innovation at their core. Our major is future-focused, working creatively for a better tomorrow for people and the planet. You'll learn about design processes and tools and, through industry-related projects, gain professional experience for a successful career in industrial design. You're part of a close-knit cohort of likeminded people, working individually and in teams in open-plan design studios.

### What this major covers

#### YEAR 1

In the first year, you'll study courses that introduce you to mātauranga Māori, design principles, life-centred design, methods, critical thinking, industrial design practice, design processes and tools. You'll explore key 2D and 3D drawing and communication skills, and spend time in our workshops hands-on exploring materials, methods and forms. Your design studio projects will be practical and collaborative, and you'll develop fundamental design skills and design knowledge. You'll also take the first courses from your second major, minor(s) or elective courses.

#### YEAR 2

You'll undertake more complex creative projects – often in collaboration with industry – and advance your knowledge of industrial design practice. This includes building a deeper understanding of materials and industrial manufacturing technologies, and working with industry-standard digital modelling software. You'll also continue with courses from your second major, minor(s) or elective courses.

#### YEAR 3

You'll practise your skills more independently in self-directed projects of your choice to develop your portfolio of work, with the option to collaborate with industry partners. We'll help you work through your design projects, from research and ideation to design refinement and prototyping. You'll also complete your final courses from your second major, your minor(s) or elective courses in the first semester of the third year. The year ends in a public exhibition where you can show your work to the public.

### Industrial design projects

You work more independently on product design projects, in partnership with industry partners like: Macpac, Città Design, Fisher & Paykel Healthcare, Auckland District Health Board, Auckland Council and Zespri.

### Career opportunities

- Product and industrial designer
- Furniture or packaging designer
- Ergonomic medical equipment, sport or performance wear designer
- Service and experience designer



"As a designer, I enjoy solving problems and turning my thoughts into reality. I love going through the design process and creating new things that no one has ever done. I hadn't heard of industrial design until my brother introduced me to it. It was a pathway he knew I would thrive within. Choosing to study industrial design was probably one of the greatest decisions I made. Not only did I enjoy what I was studying, but I was surrounded by amazing people who inspired me every day to become the greatest version of myself. I've had so many highlights during my three years at AUT, and I'd go back and relive it all over again."

#### Tui Meki

Industrial Designer, Playco Equipment Ltd  
Bachelor of Design in Industrial Design

## Bachelor of Design Te Tohu Paetahi mō te Hoahoa Interaction Design

Scan this QR code for details about courses, where your study could lead, and stories about our great graduates and students.



Develop your expertise in interaction design for a range of contemporary and future contexts, technologies and platforms. Interaction design focuses on digital interfaces, as well as physical artefacts. This includes digital web platforms (desktop, mobile and other devices), apps and product interfaces. It can also include design for information systems, wayfinding and navigation, digital dashboards and controls, as well as wearable technologies, augmented and virtual spaces. You'll work individually and in teams to combine knowledge of human-centred frameworks, complex problem solving and visual systems to create solutions to current and future challenges.

### What this major covers

#### YEAR 1

In the first year, you'll study courses that introduce you to mātauranga Māori, design principles, methods, critical thinking, creative processes, as well as user experience and interface frameworks, and techniques, including prototyping, idea analysis and user experience research methodologies. You'll learn about UX and UI principles. You'll also take the first courses from your second major, minor(s) or elective courses.

#### YEAR 2

You'll work on studio projects and workshops, advancing your understanding of creative processes and techniques, lateral thinking, functionality and design systems for navigation within communication channels. Applying UX and UI principles to communication strategies, graphic conventions and typographic systems, you'll develop communication design strategies for brand, navigation and content management. You'll also continue with courses from your second major, minor(s) or elective courses.

#### YEAR 3

You'll focus on integrating narrative structures, communication design systems and theories in industry contexts and practices. In the second semester, you'll complete a significant design project where you can do self-directed creative research that is relevant to your personal and professional career goals. This project will form a substantial part of your design portfolio. You'll also complete your final courses from your second major, minor(s) or elective courses in the first semester of the third year. The year ends in a public exhibition where you can show your work to the public.

### Career opportunities

- Interaction designer
- Digital web designer
- User interface designer
- User experience designer (UX designer)
- App designer



"In high school my favourite class was Digital Information Technologies where we did a lot of creating websites. I got Top of Year for that class in Year 12, and loved the designing phase, and being able to see those designs and rough sketches come to life after coding. Thousands of lines of gibberish create literal pieces of art, and typical users never think about any of that. They just click a button to get from A to B, but there's so much more that goes into that button than we realise. I'm confident that this is what I want to be doing for my career, and AUT feels like the best fit for me – it's modern, practical and technological."

#### Emily Wauters

1st-year student, Te Tohu Paetahi mō te Hoahoa – Bachelor of Design in Interaction Design & Software Development



Bachelor of Design Te Tohu Paetahi mō te Hoahoa  
**Spatial and Interior Design**

Scan this QR code for details about courses, where your study could lead, and stories about our great graduates and students.



Spatial and interior design is the design of human environments from the inside out. This major prepares you for a career designing interiors, furniture, exhibitions, events, outdoor spaces, retail environments, and scenes for stage and film. As a spatial and interior design student, you unlock the potential of places by designing spatial environments that support, influence, and transform how we live now and into the future. In our studios, you'll work on design briefs across the whole field of spatial and interior design. You test and evolve your ideas through drawings, models, digital simulations and hands-on prototypes, and work with community and industry partners.

**What this major covers**

**YEAR 1**

In the first year, you'll study courses that introduce you to mātauranga Māori, design principles, methods, critical thinking and creative processes. You'll also become familiar with essential spatial design concepts and techniques, with a focus on intimate spaces, exploring how we experience and perceive things close to us. You'll develop your drawing and digital modelling skills, and learn to analyse familiar spaces from new perspectives by looking at materials, light, surfaces and atmosphere. You'll also take the first courses from your second major, minor(s) or elective courses.

**YEAR 2**

The focus this year is on shared spaces; places where we meet and interact with others. You'll analyse real sites and make things in our workshops. You'll apply your developing creative skills and design processes to new, more complex scenarios, and learn about producing instructional documentation. You also continue with your courses from your second major, your minor(s) or elective courses.

**YEAR 3**

In the final year, you'll consider public spaces and situations like streets, galleries and public events. You'll complete a significant design project where you can do self-directed creative research that is relevant to your personal and professional career goals. You'll also complete your final courses from your second major, your minor(s) or elective courses in the first semester of the third year. The year ends in a public exhibition where you can show your work to the public.

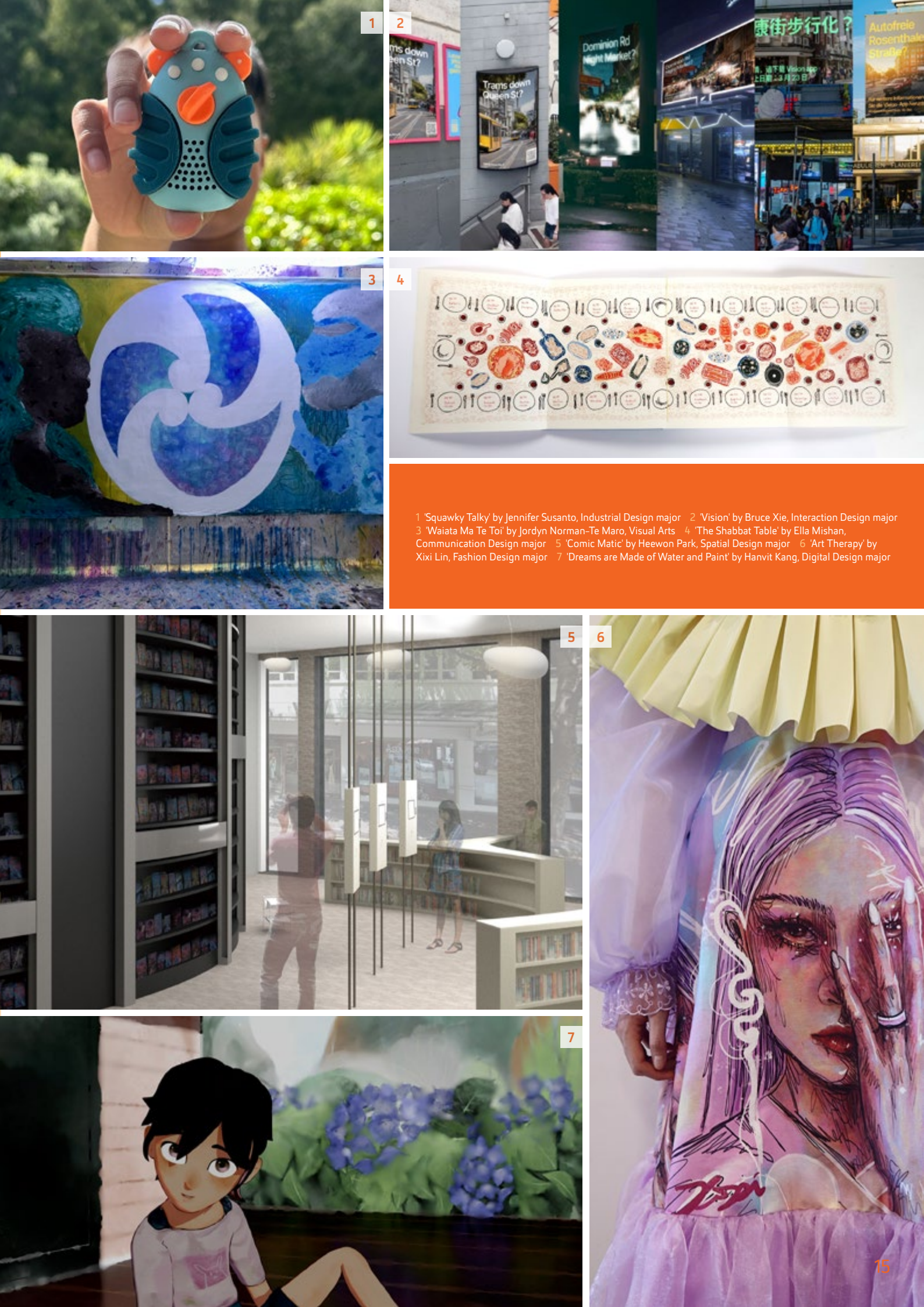
**Career opportunities**

- Spatial designer/interior designer
- Event and experience designer
- Designing for stage and film
- Furniture design
- Retail design



"I took many art-related subjects in school, and I went to AUT LIVE and the studio open days. I was interested in multiple design sectors, but I chose spatial design in the end because of the different pathways it offered. One of the highlights for me was a final-year course where we got to propose new solutions for North Shore Hospital. We did many site visits before designing to experience a patient's journey and learned a lot about healthcare design. It was inspiring to see how something like lighting and materiality can instantly impact someone's life in a positive way. This made me deeply interested in human-centered design and environmental design."

**Angel Chen**  
Interior Architect, AECOM, Shanghai, China  
Bachelor of Design in Spatial Design with a minor in Creative Entrepreneurship



1 'Squawky Talky' by Jennifer Susanto, Industrial Design major 2 'Vision' by Bruce Xie, Interaction Design major  
3 'Waiata Ma Te Toi' by Jordyn Norman-Te Maro, Visual Arts 4 'The Shabbat Table' by Ella Mishan, Communication Design major 5 'Comic Matic' by Heewon Park, Spatial Design major 6 'Art Therapy' by Xixi Lin, Fashion Design major 7 'Dreams are Made of Water and Paint' by Hanvit Kang, Digital Design major



# Bachelor of Visual Arts

## Te Tohu Paetahi mō Toi Ataata

### Overview

Passionate about art? This programme prepares you for the demands of a career in contemporary art, whether as an artist or in the many other roles within the art sector. Study visual arts and enjoy a student-centred and studio-based programme where you can follow your interests in art – including drawing, printmaking, digital art, sculpture, moving image, analogue and digital photography, installation, sound, painting, performance, art and technology, social and community-based art practices.

#### Entry requirements

##### Minimum entry requirements

University Entrance or equivalent in approved subjects. Refer to the AUT website for further information.

##### Useful New Zealand school subjects

Classical Studies, Computing, Construction and Mechanical Technologies, Design (Practical Art), Design and Visual Communication, Digital Technologies or Hangarau Matihiko, English, Geography, Hangarau, Hauora, Health, History, History of Art, Mathematics/Pāngarau, Media Studies, Music Studies, Ngā Mahi a Rēhia, Ngā Toi, Ngā Toi Ataata, Ngā Toi Puoro, Painting (Practical Art), Pāngarau, Photography (Practical Art), Physics, Printmaking (Practical Art), Processing Technologies, Psychology, Pūtaiao/Science, Sculpture (Practical Art), Technology/Hangarau, Te Ao Haka, Te Reo Māori, Te Reo Rangatira, Technology, Visual Arts

##### English language requirements

IELTS (Academic) 6.0 overall with all bands 5.5 or higher; or equivalent.

##### Don't meet the entry requirements?

Consider starting with the Diploma in Visual Arts Titohu mō te Toi Ataata – refer to page 22 for more details.

BVA | AK3352

#### QUICK FACTS

Level	7
Points	360
Duration	3 years full-time, part-time available
Campus	City
Starts	3 March 2025

#### What this qualification covers

The Bachelor of Visual Arts Te Tohu Paetahi mō Toi Ataata is highly flexible and you can build your degree in a way that reflects you and your interests. To graduate with this degree you need to complete:

##### Core courses (120 points)

These are courses all students in this degree need to take. They cover fundamental visual arts principles and processes, and help you decide which subject to focus on later in your studies. Two of the core courses are Integrated Visual Arts Practices and Professional Contexts in your final semester, which give you a chance to apply what you've learnt in a practice-based project and further your understanding of what to expect from a career in the art industry.

##### Your chosen major (120 points)

Your major is the subject area you want to specialise in. This makes up one third of your degree. You can view the list of majors in this degree on page 18.

##### Flexible component (120 points)

You can choose one of the following options

- Two minors (60 points each); or
- A minor (60 points) and elective courses (60 points); or
- A second major (120 points)

Your second major, minor(s) and elective courses can be from visual arts or different AUT degrees.



Scan this QR code for details about courses, where your study could lead, and stories about our great graduates and students.

YEAR 1		YEAR 2		YEAR 3	
SEMESTER 1	Core Studio 30 PTS	Major course 30 PTS	Major course 30 PTS	Major course 30 PTS	Major course 30 PTS
	Visual Arts Contexts 15 PTS	Flexible component 15 PTS	Flexible component 15 PTS	Flexible component 15 PTS	Flexible component 15 PTS
	Mahitahi   Collaborative Practices 15 PTS	Flexible component 15 PTS	Flexible component 15 PTS	Flexible component 15 PTS	Flexible component 15 PTS
SEMESTER 2	Major course 30 PTS	Major course 30 PTS	Major course 30 PTS	Integrated Visual Arts Practices 45 PTS	Integrated Visual Arts Practices 45 PTS
	Flexible component 15 PTS	Flexible component 15 PTS	Flexible component 15 PTS	Flexible component 15 PTS	Flexible component 15 PTS
	Flexible component 15 PTS	Flexible component 15 PTS	Flexible component 15 PTS	Flexible component 15 PTS	Professional Contexts 15 PTS

Core courses PTS: Points



"The lecturers always take the nurturing and encouraging approach instead of criticising. The studio culture is also lovely. I met some of my best friends by sharing studios with like-minded art practitioners. It's nice that studios at AUT are open late. There are plenty of resources and support to help you express the things you truly care about, plus AUT has great connections with the wider art community in Aotearoa. For third-year Bachelor of Visual Arts students and all Master of Visual Arts students, there's an annual event called Talk Week. External curators and artists are invited to give students an extensive critique on their works, which is so helpful. We're also in the loop to receive updates of exhibitions, residencies, workshops etc."

**Tony Guo**  
Artist  
Master of Visual Arts  
Bachelor of Visual Arts



# Bachelor of Visual Arts Te Tohu Paetahi mō Toi Ataata

Overview continued

### Majors

Choose one of these majors as part of your degree:

- Painting, Printmaking and Drawing
- Photography, Sculpture and Moving-image

Refer to pages 19 and 20 for more details on each of these majors.

If you want to include a second major in your degree, you can choose the other subject from the list above or can see more options from different AUT degrees on [aut.ac.nz/majors-minors](https://aut.ac.nz/majors-minors)

### Minors

A minor is smaller than a major. It usually consists of four courses. If you decide to include a minor in your degree, you could choose from:

- Painting, Printmaking and Drawing
- Photography, Sculpture and Moving-image

Our design minors are also great options to include in your degree – refer to page 8 for details.

For more information on each of these minors and to see even more minors from other subjects visit [aut.ac.nz/majors-minors](https://aut.ac.nz/majors-minors)



### Build your degree on our website

Visit our website to build your own degree and see what your three years of study could look like. Simply scan the QR code on page 17.

#### Possible combinations include:

- Bachelor of Visual Arts Te Tohu Paetahi mō Toi Ataata in Painting, Printmaking and Drawing with minors in Photography, Sculpture and Moving-image & Marketing (one major, two minors)
- Bachelor of Visual Arts Te Tohu Paetahi mō Toi Ataata in Photography, Sculpture and Moving-image with a minor in Creative Entrepreneurship (one major, one minor, plus elective courses of your choice)
- Bachelor of Visual Arts Te Tohu Paetahi mō Toi Ataata in Painting, Printmaking and Drawing & Photography, Sculpture and Moving-image (two majors)

## Bachelor of Visual Arts Te Tohu Paetahi mō Toi Ataata Painting, Printmaking and Drawing

Scan this QR code for details about courses, where your study could lead, and stories about our great graduates and students.



Explore painting, printmaking and drawing methods, processes and technologies, and develop creative artworks that express your unique voice as a visual artist. You'll be based in our collaborative wānanga/studio environment, and have lots of opportunities to experiment with drawing, painting, relief, intaglio, screen and digital printing, virtual reality drawing/painting and bookbinding. Throughout this major, you'll become familiar with painting, printmaking and drawing in the context of Aotearoa New Zealand but also explore global trends in the art world.

### What this major covers

#### YEAR 1

In the first semester, you'll study core courses that introduce you to fundamental visual arts principles and processes. You'll focus on basic 2D and 3D media, materials and processes; visual language, contemporary and historical visual arts contexts, and the importance of mātauranga Māori.

In your second semester you'll take your first painting, printmaking and drawing course, which is your chance to explore contemporary theories, concepts and techniques in our supportive wānanga/studio environment. You'll also start your courses from your second major, your minor(s) or elective courses.

#### YEAR 2

You'll deepen your knowledge of painting, printmaking and drawing practices and conventions. Based in our collaborative wānanga/studio environment, you'll explore analogue and digital materials, concepts and technologies, and critical theories within a contemporary visual arts context. You'll also continue to take courses from your second major, your minor(s) or elective courses.

#### YEAR 3

You'll continue to advance your understanding of painting, printmaking and drawing processes, technologies and techniques, working in our collaborative wānanga/studio environment. In your final semester you'll apply what you've learnt in a practice-based project and further your understanding of what to expect from a career in the art industry. You'll also continue to take courses from your second major, your minor(s) or elective courses.

### Career opportunities

AUT visual arts alumni are now carving successful careers around the world, as notable artists, curators, arts administrators, academics, teachers and technicians.



"I majored in painting and minored in experimental textiles. Fast forward to today, I'm interested in exploring a territory of visual aesthetic shock. I start painting in a way that I know, through layering colour, gesture, line and grids. I then disrupt and wrestle with these rhythms, exploring new forms of expression and juxtapositions. Painting in this way offers possibility for new aesthetic and affectual experiences to occur. I would 100% recommend studying visual arts. I created life-long friendships, enjoyed learning in such a supportive community, loved the gallery visits and guest speakers, and felt very lucky to have my own studio. The programme has a great balance between written assignments and practical work."

**Caitlyn Manning**  
Painter/Art Tutor  
Master of Visual Arts  
Bachelor of Art and Design (Honours)  
Bachelor of Visual Arts

## Bachelor of Visual Arts Te Tohu Paetahi mō Toi Ataata Photography, Sculpture and Moving-image

Scan this QR code for details about courses, where your study could lead, and stories about our great graduates and students.



Through photography, sculpture and moving image you can create a range of artworks using different media, ideas, techniques and technologies. You'll become familiar with photography, sculpture or moving image in the context of Aotearoa New Zealand but also discover global trends in the art world. Learning in our wānanga/studio environment, you'll experiment with different methods and techniques, including studio lighting, digital scanning, film processing, darkroom/digital printing, video and still camera technology, sound, editing, moving-image and AI.

### What this major covers

#### YEAR 1

In the first semester, you'll study core courses that introduce you to fundamental visual arts principles and processes. You'll focus on basic 2D and 3D media, materials and processes; visual language, contemporary and historical visual arts contexts, and the importance of mātauranga Māori.

In your second semester you'll take your first photography, sculpture or moving image course where you can explore contemporary theories, concepts and techniques in our supportive wānanga/studio environment. You'll also start your courses from your second major, your minor(s) or elective courses.

#### YEAR 2

You'll further your understanding of photography, sculpture or moving image media. You'll learn in our wānanga/studio environment where you'll explore different materials, concepts and technologies, and contemporary visual arts theories. You'll also continue to take courses from your second major, your minor(s) or elective courses.

#### YEAR 3

You'll continue your exploration of photography, sculpture or moving image media processes, technologies and techniques, working in our collaborative wānanga/studio environment. In your final semester you apply what you've learnt in a practice-based project and further your understanding of what to expect from a career in the art industry. You'll also continue to take courses from your second major, your minor(s) or elective courses.

### Career opportunities

AUT visual arts alumni are now carving successful careers around the world, as notable artists, curators, arts administrators, academics, teachers and technicians.



"I have a real interest in photographing within nature, capturing moments of time. I also have a passion for sports, so can see myself taking my photography in different directions in the outdoors. Having my work in galleries or people's homes other than my family and friends would be pretty cool. When I saw what AUT had to offer with the visual arts degree, and the art and design school, I was excited about the different pathways I could explore. I really liked the wide variety of the resources available, and the modern nature of the degree and the campus facilities. The other students, lecturers and support staff at AUT have created such a community throughout my studies. The one-on-one time lecturers spend with you is invaluable – they get to know you as a person; not only as a student."

**Harriet Graham**  
2nd-year student, Bachelor of Visual Arts

## Diploma in Design Tītohu mō te Hoahoa

Scan this QR code for details about courses, where your study could lead and stories about our great graduates and students.



Passionate about design? Our Diploma in Design Tītohu mō te Hoahoa is another way into AUT. If you're not entirely sure what to expect from uni or from studying design, or missed out on getting into your dream degree, the diploma is a great way to begin your university studies and broaden your knowledge of design. You'll take the same courses as our first-year bachelor's degree students, and study in a supportive environment with additional academic and student support. It's a great way to try university and gain a qualification in one year. Once you've completed your diploma you can then move into Year 2 of the Bachelor of Design Te Tohu Paetahi mō te Hoahoa, which means you can still complete your chosen bachelor's degree in three years.

### Entry requirements

#### Minimum entry requirements

- University Entrance OR
- 42 NCEA credits at Level 3, including UE literacy and numeracy, with:
  - 10 credits in each of 3 approved subjects, OR
  - 12 credits in each of 2 approved subjects and 14 credits across 2 further subjects

#### English language requirements

IELTS (Academic) 5.5 overall with a minimum of 5.5 in writing and a minimum of 5 in other bands, or equivalent.

### What this qualification covers

You'll become familiar with different design methods and processes, and the history and theories of design. You'll also build your academic writing, communication, critical thinking and problem-solving skills to give you the confidence for further study.

The courses you study are from the first year of the Bachelor of Design Te Tohu Paetahi mō te Hoahoa. After you've completed this diploma, you can then cross-credit your courses and transfer to the second year of our design degree. Your diploma courses can also help you decide which subjects you might like to focus on later once you move into our bachelor's degree. We will work with you to help you identify where you want to go and what courses will help you get there.

### Further study

- Bachelor of Design Te Tohu Paetahi mō te Hoahoa

Because you study the same first-year courses as our bachelor's degree students, you can move into the second year of the Bachelor of Design Te Tohu Paetahi mō te Hoahoa once you've completed this diploma.

DipDes | AK3640

### QUICK FACTS

Level	5
Points	120
Duration	1 year full-time, part-time available
Campus	City
Starts	3 March 2025



"I love design, drawing and painting, and so I was looking for a job that would allow me to do that. I went to a career advisor and researched different jobs before deciding that graphic designer would be perfect for me. I chose AUT because I had heard that AUT's design school was one of the best, and it would be practical and hands on. I've always wanted to go to uni, but because I was homeschooled, I didn't have NCEA credits and couldn't get into the bachelor's degree. This diploma meant that I was able to still study design, and will be able to cross-credit my diploma courses to move into the second year of the Bachelor of Design Te Tohu Paetahi mō te Hoahoa. It means I can finish at the same time as if I had started with the bachelor's degree."

**Anna Millar**  
Tītohu mō te Hoahoa –  
Diploma in Design student



# Diploma in Visual Arts Titohu mō te Toi Ataata

Scan this QR code for details about courses, where your study could lead and stories about our great graduates and students.



Interested in visual arts? Start your university studies with our Diploma in Visual Arts Titohu mō te Toi Ataata. It's another way into AUT; perfect if you're not entirely sure what to expect from uni or from studying visual arts, or missed out on getting into your dream degree. You'll take the same courses as our first-year bachelor's degree students, and study in a supportive environment with additional academic and student support. It's a great way to try university and gain a qualification in one year. Once you've completed your diploma you can then move into Year 2 of the Bachelor of Visual Arts Te Tohu Paetahi mō Toi Ataata, which means you can still complete your chosen bachelor's degree in three years.

## Entry requirements

### Minimum entry requirements

- University Entrance OR
- 42 NCEA credits at Level 3, including UE literacy and numeracy, with:
  - 10 credits in each of 3 approved subjects, OR
  - 12 credits in each of 2 approved subjects and 14 credits across 2 further subjects

### English language requirements

IELTS (Academic) 5.5 overall with a minimum of 5.5 in writing and a minimum of 5 in other bands, or equivalent.

## What this qualification covers

You'll become familiar with different 2D and 3D artmaking methods and processes, the history and theories of visual arts, and the importance of mātauranga Māori. You'll also develop your academic knowledge and study skills to give you the confidence for further study.

The courses you study are from the first year of the Bachelor of Visual Arts Te Tohu Paetahi mō Toi Ataata. After you've completed this diploma, you can then cross-credit your courses and transfer to the second year of our visual arts degree. Your diploma courses can also help you decide which subjects you might like to focus on later once you move into our bachelor's degree. We will work with you to help you identify where you want to go and what courses will help you get there.

## Further study

- Bachelor of Visual Arts Te Tohu Paetahi mō Toi Ataata

Because you study the same first-year courses as our bachelor's degree students, you can move into the second year of the Bachelor of Visual Arts Te Tohu Paetahi mō Toi Ataata once you've completed this diploma.

DipVA | AK2007

## QUICK FACTS

Level	5
Points	120
Duration	1 year full-time, part-time available
Campus	City
Starts	3 March 2025



1 Turn your fashion designs into reality with our industry-standard machinery and digital technologies  
2 Enjoy hands-on, studio-based learning as a spatial and interior design student  
3 AUT's City Campus is in the heart of Auckland City  
4 Our wet lab equipment includes kilns, wheels, extruders, a fume bench, wax heaters and a resin room  
5 Art & design's yearly graduate showcase includes work from 500+ students across eight departments  
6 Facilities and processes in our printmaking studio include screen printing, intaglio, relief printing and lithography  
7 As an industrial design student, you'll have access to open plan design studios



# Overview of postgraduate qualifications

Scan this QR code for more details on postgraduate art and design programmes.



AUT is Aotearoa New Zealand’s fastest growing postgraduate study destination. We offer a wide range of postgraduate programmes to help you achieve your goals, and further your art and design practice. Our world-leading academics are research-active experts at the forefront of their disciplines, and you can complete your research using our state-of-the-art facilities.

## Master of Design

The Master of Design is a research degree that helps you develop your design expertise and empower your decision-making as a designer. You work on interdisciplinary projects and can specialise in one of the following areas: communication design, digital design, fashion design, textile design, good health design, industrial design, spatial and interior design or strategic leadership in design. You’ll apply creative research strategies, and can contribute to a vibrant, collaborative design culture.

## Master of Visual Arts

This is an interdisciplinary research degree for visual arts graduates and creative professionals. The degree is highly flexible and caters for students from a variety of backgrounds. You select a learning pathway that reflects your art practice and professional interests. You have access to individual studio spaces, supervision support and well-equipped specialist facilities. Your research will contribute to the conversations around creative practice.

## Master of Philosophy

The Master of Philosophy is a one-year research-only master’s degree. It gives you the opportunity to undertake a research project of an applied or professional nature, under the supervision of art and design staff. It can also serve as a pathway to more advanced research at doctoral level.

## Doctor of Philosophy

The Doctor of Philosophy (PhD) is a thesis-based research degree that leads to advanced academic and theoretical knowledge in a specialist area. It’s the highest qualification offered at a university. It enables you to make an original contribution to understanding in the field of art and design, and meet recognised international standards for such work. You work closely with a supervisor to prepare a thesis, which is then examined by independent experts applying contemporary international standards.



The AUT City Campus in the heart of Auckland City



# Whakauru where wānanga

## UNIVERSITY ENTRANCE

### University admission to AUT bachelor's degrees

#### For New Zealand citizens and residents, and international students studying in a high school in New Zealand

To gain admission to bachelor's degrees, you must have met the requirements for University Entrance plus any specified admission requirements for a programme, such as specific subjects and interviews.

For more information on entry requirements, including entry requirements for international students visit [aut.ac.nz/entryrequirements](https://aut.ac.nz/entryrequirements)

#### Admission categories

You may be granted University Entrance under one of the following categories:

- NCEA University Entrance
- Ad Eundem Statum admission (at an equivalent level) – this includes Cambridge International Examinations (CIE) and International Baccalaureate Diploma Programme (IB)
- Discretionary Entrance
- Special Admission

Visit [aut.ac.nz/entryrequirements](https://aut.ac.nz/entryrequirements) to find out more details about these admission categories.

### Common University Entrance requirements

Where programmes require a specific subject, it is expected that a student will have achieved a minimum of 14 NCEA credits in that subject (or equivalent), unless indicated otherwise. For a list of NCEA approved subjects for University Entrance visit the NZQA website, [nzqa.govt.nz](https://nzqa.govt.nz)

	NCEA	CIE	IB <sup>3</sup>
Overall	Require NCEA level 3 certificate which consists of 80 credits, including at least 60 credits at level 3 or higher. Can include up to 20 credits at level 2. Note: Credits to achieve NCEA level 3 may include unit standards from non-approved subjects. <b>Subject credits</b> Total of 42 level 3 credits including: <ul style="list-style-type: none"><li>• 14 credits from one approved subject</li><li>• 14 credits from a second approved subject</li><li>• 14 credits from a third approved subject</li></ul>	A minimum of 120 points on the New Zealand CAIE Tariff <sup>1</sup> at A or AS level from an approved list (equivalent to NCEA approved subject list). Must include at least three subjects (excluding Thinking Skills) with grades D or above.	IB Diploma with minimum 24 points
Numeracy	At least 10 level 1 (or higher) numeracy credits (can be achieved through a range of subjects)	A minimum grade of D in IGCSE <sup>2</sup> mathematics or any mathematics subject at AS or A level.	Any mathematics subject – IB Group 5
Literacy	Total of 10 level 2 (or higher) literacy credits including: <ul style="list-style-type: none"><li>• 5 reading credits</li><li>• 5 writing credits</li></ul> From specific standards in a range of NZQA English language rich subjects	A minimum grade of E in English Language and/or English Literature subject at AS or A level.	Literature or language and literature (SL or HL) – IB Group 1, with English as the language

1. NZ Tariff (based on old UCAS Tariff) = system which converts AS and A level grades into points.  
2. IGCSE = International General Certificate of Secondary Education.  
3. New Zealand residents who have taken IB but have not been awarded the Diploma may apply for discretionary entrance.

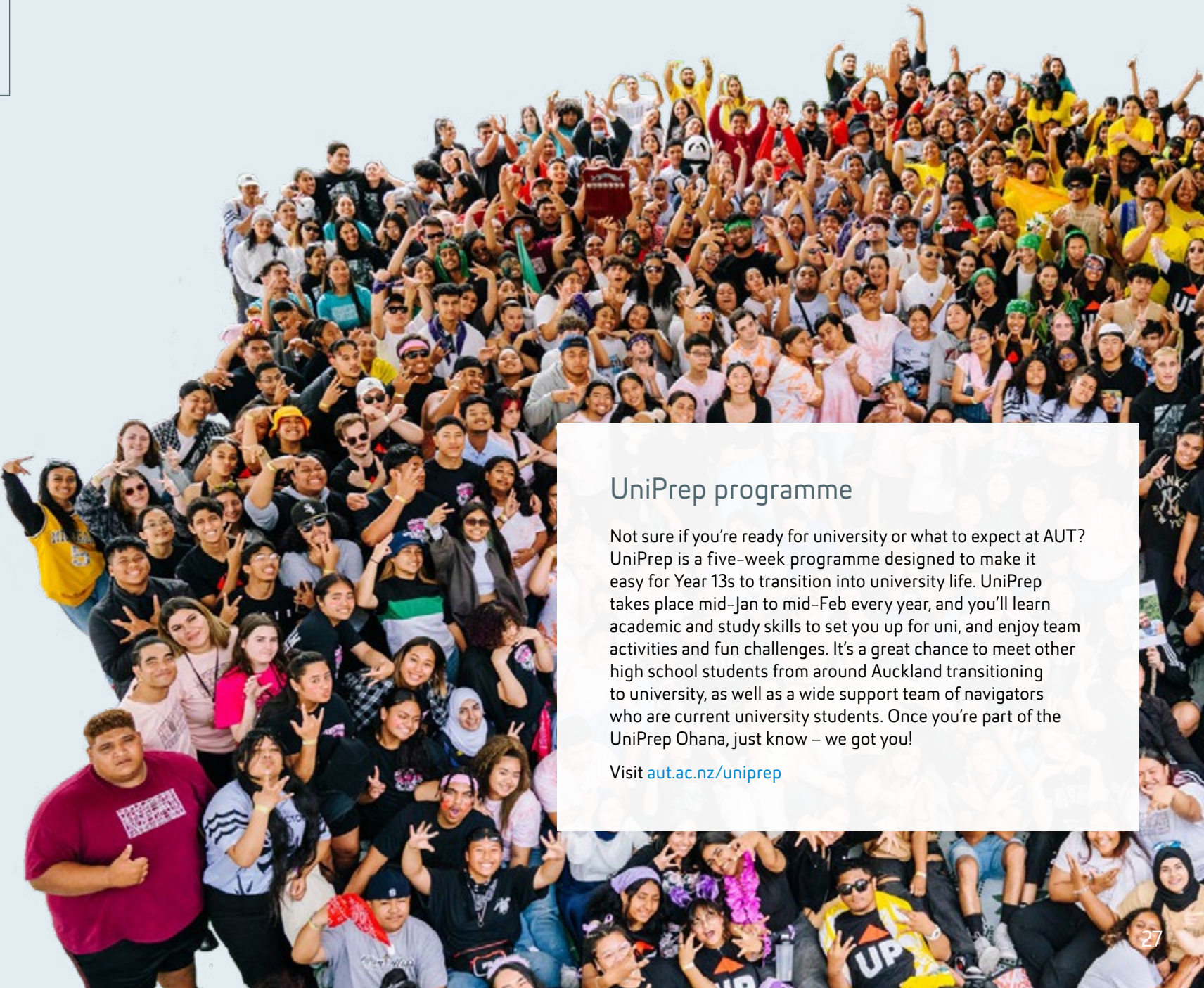
### English language requirements

If you don't have English as your first language, you may have to show evidence of your English language skills. Visit [aut.ac.nz/englishrequirements](https://aut.ac.nz/englishrequirements) for details about English language testing and recognised English tests.

### International students

Contact us for information regarding studying at AUT if you're not a citizen or permanent resident of New Zealand or Australia, or a citizen of the Cook Islands, Niue or Tokelau islands.

Visit [aut.ac.nz/int/entryrequirements](https://aut.ac.nz/int/entryrequirements) for entry requirements for specific countries. If you have any questions, you can contact us at [aut.ac.nz/enquire](https://aut.ac.nz/enquire)



### UniPrep programme

Not sure if you're ready for university or what to expect at AUT? UniPrep is a five-week programme designed to make it easy for Year 13s to transition into university life. UniPrep takes place mid-Jan to mid-Feb every year, and you'll learn academic and study skills to set you up for uni, and enjoy team activities and fun challenges. It's a great chance to meet other high school students from around Auckland transitioning to university, as well as a wide support team of navigators who are current university students. Once you're part of the UniPrep Ohana, just know – we got you!

Visit [aut.ac.nz/uniprep](https://aut.ac.nz/uniprep)



# Ngā utu whakauru, ngā karahipi

## FEES & SCHOLARSHIPS

Cost is an important factor when thinking about university study. This page gives you an idea of the approximate tuition fees at AUT, and different options to help you fund your education including scholarships, student loans and allowances.

To give you an idea of approximate costs, the 2024 tuition fees are shown below (based on full-time study and completing 120 points per year). All fees are in NZ dollars and include GST. The 2025 tuition fees will be advertised on [aut.ac.nz/fees](https://aut.ac.nz/fees) as soon as they have been set. You may also need to pay additional fees for course materials or elective courses (check with your faculty if there are additional fees for your programme).

### Domestic student tuition fees

First-time domestic students are entitled to one year of fees free.

Undergraduate programmes	
Fee (per year):	\$8,435 – \$8,488 (for 120 points) (\$7,289 – \$7,342 tuition fees + \$1,146 student services levy)

1. Part-time students pay a proportion of the fee based on the number of academic points they are studying.

### International student tuition fees

Undergraduate programmes	
Fee (per year):	\$40,646 – \$41,046 (for 120 points) (\$39,500 – \$39,900 tuition fees + \$1,146 student services levy)

Please note that you must pay your fees in full by the date specified on your fees invoice.

To find out more about fees call +64 9 921 9779 or 0800 AUT AUT (0800 288 288).

### Free fees for your university study<sup>1</sup>

Eligible domestic students starting tertiary education may receive one year of full-time study fees-free. To check if you're eligible for fees-free study visit [aut.ac.nz/fees](https://aut.ac.nz/fees)

### Student loans and allowances<sup>1</sup>

If you're a full-time domestic student, you may qualify for a student loan or allowance. Student loans and allowances are administered and paid by StudyLink. The application process can take some time, so it's a good idea to apply early. You can apply for a student loan or student allowance before your enrolment at AUT is complete.

To find out more call 0800 88 99 00 or visit [studylink.govt.nz](https://studylink.govt.nz)

1. Domestic students only, not available to international students.

### Financial assistance

We know that sometimes things happen and financial stress can impact your academic success. That's why we offer financial support that ranges from offering grocery or fuel vouchers, to helping with that unexpected bill.

### StudyLink

Visit [studylink.govt.nz](https://studylink.govt.nz) for tools, tips and information to help you plan and understand the costs you will have while studying.

### Scholarships and awards

**Scholarships and awards are a great way to fund your university study. There is a wide range of scholarships and awards available to AUT students at all stages of their study including the Welcome to Auckland scholarship and Find Your Greatness scholarship (details below).**

Visit the scholarships website for a full current list of scholarships offered by AUT and external funders, as well as application forms and closing dates. You can also contact AUT's Scholarships Office for advice on scholarships, awards and the scholarship application process.

#### 2025 AUT Welcome to Auckland Scholarships

Because we recognise the challenges students may face when moving to Auckland, AUT's three-year Welcome to Auckland scholarships make a contribution towards students' accommodation and study fees. These scholarships recognise high-achieving secondary school students living outside of Auckland who intend to enrol in bachelor's degree study commencing in 2025.

#### 2025 AUT Find Your Greatness Scholarships – School Leaver

AUT's Find Your Greatness undergraduate scholarships for school leavers reflect our commitment to creating great graduates. These three-year scholarships recognise students' academic achievement, as well as students' potential leadership ability and contribution to their school or community, cultural pursuits or sport at a representative level.

The Find Your Greatness scholarships are offered in the four categories below for study commencing in 2025:

- Academic Excellence
- All Rounder
- Hiki Ake (Lift Up)
- Kiwa (Māori and Pacific students)

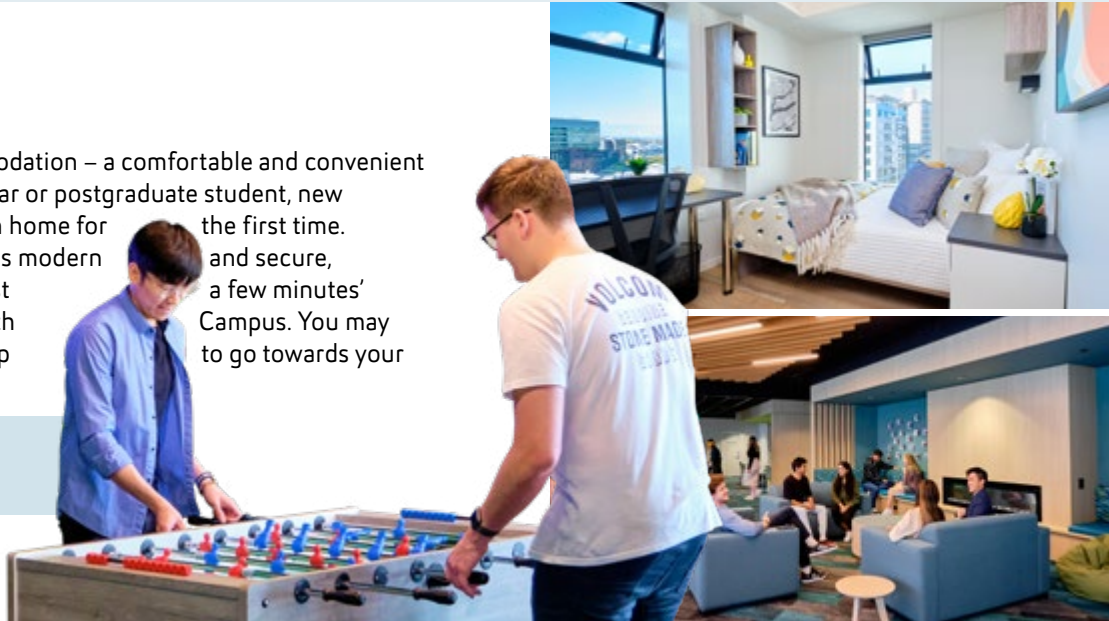
Applicants will be considered in all categories for which they are eligible.

To find out more call +64 9 921 9837 or visit [aut.ac.nz/scholarships](https://aut.ac.nz/scholarships)

### Accommodation

Check out our student accommodation – a comfortable and convenient option whether you're a first-year or postgraduate student, new to Auckland, or living away from home for the first time. AUT's student accommodation is modern and secure, offering a social community just a few minutes' walk away from our City or North Campus. You may even be eligible for a scholarship accommodation costs.

Visit [aut.ac.nz/accommodation](https://aut.ac.nz/accommodation)





He pēhea te tono

# HOW TO APPLY

Below is the step-by-step guide to the application process.  
For more information visit [aut.ac.nz/apply](https://aut.ac.nz/apply)

1

APPLY EARLY

Places are limited. Submit your application well before the semester starts.

APPLYING FOR SEMESTER 1, 2025  
– apply by 2 December 2024

2

COMPLETE THE APPLICATION FORM

- Apply online
- Indicate your programme(s) of choice and major (if known)

International students can also apply using an AUT approved international agent. For a list of AUT registered agents visit [aut.ac.nz/international-agents](https://aut.ac.nz/international-agents)

SUBMIT YOUR APPLICATION

WE ACKNOWLEDGE YOUR APPLICATION

- We will send you an acknowledgment email, which explains how to check the status of your application
- We will contact you if we need more information

WE ASSESS YOUR APPLICATION

- We assess your application to ensure you have met the entry criteria for the programme(s) you are applying for
- We consider your academic history and relevant experience to ensure you can succeed in your programme
- We let you know if your application has been successful

POSSIBLE OUTCOMES

**CONFIRMED** We would like to offer you a place to study at AUT

**PROVISIONAL** You have met some of the criteria for entry to your chosen programme of study and we would like to offer you a provisional place to study at AUT. If you don't meet the rest of the requirements, then this offer will be withdrawn

**CONDITIONAL** You have to meet the conditions and approvals listed in your conditional offer to be able to secure a formal offer of place

**DECLINED** If you don't meet the entry requirements or all places are taken, we may offer you an alternative programme

3

ACCEPT YOUR OFFER

It's important that you respond as soon as possible, particularly if you've been offered a place in a programme with limited places.

Once you've accepted your offer of place, we'll let you know how to enrol in the courses for your programme, and you can start to get excited about joining AUT.

Ready to apply?  
[apply.aut.ac.nz](https://apply.aut.ac.nz)



Ētahi atu kōrero  
FIND OUT MORE



aut.ac.nz

## Need some help?

Visit [aut.ac.nz/enquire](https://aut.ac.nz/enquire), ask us your question and we'll call you back. Or you can phone **0800 AUT AUT** (0800 288 288) to speak to one of our friendly advisors. We can help with any questions you may have, and you could also book a course counselling session or a campus tour.

## Campuses

### City Campus

55 Wellesley Street East, Auckland Central

### North Campus

90 Akoranga Drive, Northcote, Auckland

### South Campus

640 Great South Road, Manukau, Auckland

Connect with us now:



## AUT LIVE

Join us at our open day, AUT LIVE, on the City Campus and see everything AUT has to offer to help you make an educated decision about university study.

[aut.ac.nz/live](https://aut.ac.nz/live)







**0800 AUT AUT (0800 288 288)**

Auckland University of Technology  
Auckland, New Zealand  
[aut.ac.nz](http://aut.ac.nz)

Enquire now  
[aut.ac.nz/enquire](http://aut.ac.nz/enquire)

**Connect with us now:**



This booklet is printed on Satin matt paper which is certified to the Forest Stewardship Council® (FSC®) standard as an FSC Mix paper from well managed forests and other responsible sources.

We print using BIO-inks that contain materials that are based on renewable resources including wood resin (rosin, colophony), and vegetable oils, linseed oil and soybean oil and the printing company is FSC certified.