

NZ Time Series Database

What is NZ Time Series?

This database contains over 5,000 economic, financial and social time series, with the majority from Statistics New Zealand, with some series from the Reserve Bank of New Zealand, Treasury New Zealand, and the New Zealand Land Transport Safety Authority.

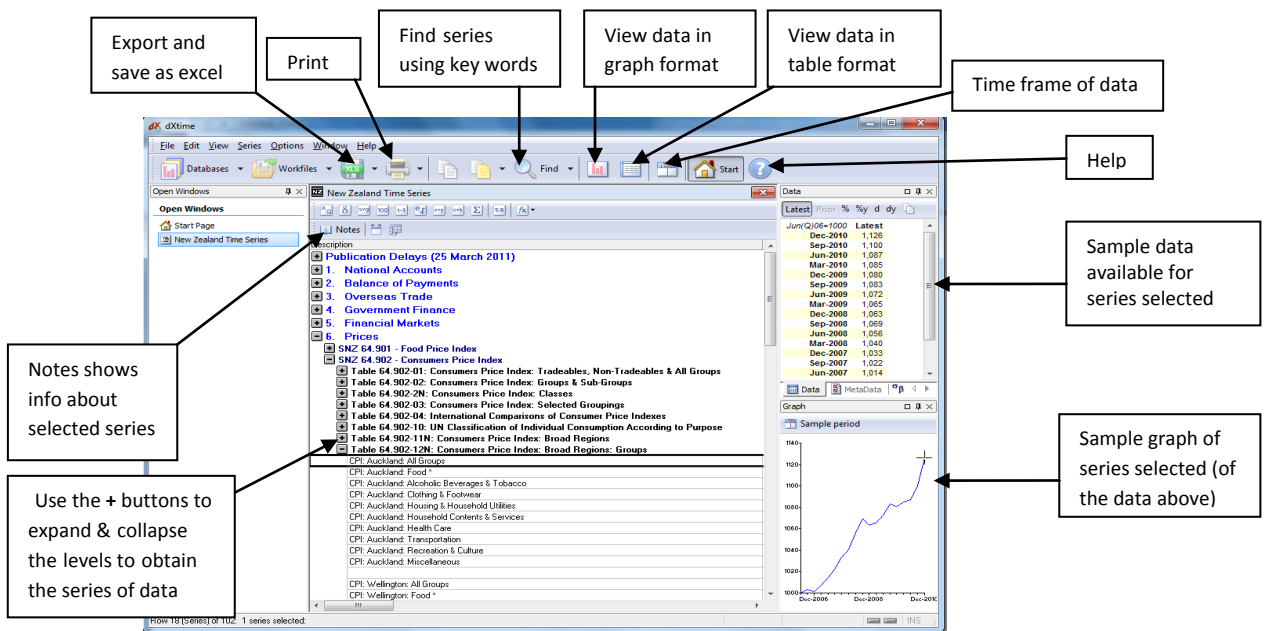
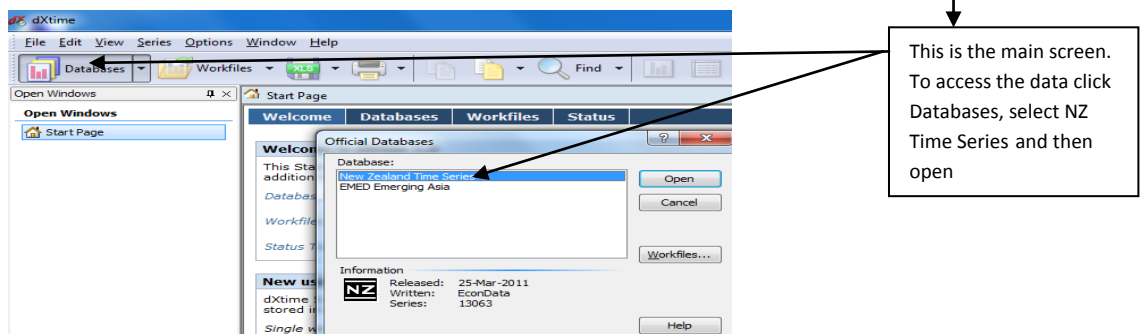
The information is organised into broad subject areas e.g. Overseas Trade and Government Finance, which are then subdivided into files and then series.

AUT Library receives quarterly updates of the data

Accessing NZ Time Series

Available from AUT Computers, on Campus only, via the Library Applications Menu.

Start Menu → All Programs → Library Applications → dXTime → NZ Time Series & EMED Emerging Asia



To find Data

- Use the **+** buttons to drill down and browse the hierarchy of the series OR
- Use the **Find** option to search within series using keywords

Selecting series

Selected series may be instantly graphed or displayed in a Data Table by choosing **View > Graph** or **View > Data** (or by clicking on the corresponding toolbar buttons).

Adjacent rows (series or headings) in the Series Directory can be selected by

- Dragging with the mouse OR
- Holding the SHIFT key and clicking with the mouse OR
- Using the SHIFT key in combination with the arrow keys

Non -adjacent rows can be selected by

- Holding the CTRL key and clicking with the mouse

An entire Table may be selected by double-clicking any series within the Table, or by pressing the * key

X-marking series

This is a means of tagging series or headings of interest for later reference. X-marks can also facilitate the selection of non-adjacent rows in the Series Directory. It can also be used for comparing a number of series together.

- To **x-mark** all the currently selected rows, press **SPACE**, or use the **View > X-mark command**. The X-mark command acts as a toggle. Selected items without x-marks receive them, and those with x-marks have the x-marks removed.
- The database remembers the location of the x-marked items even if they are contained within collapsed headings

Note: The various x-marking commands are only available when the active window is a Series Directory.

Selecting X-marked Rows

Once items of interest have been x-marked, press **CTRL+SPACE**, or use the **View > Select X-marked command**, to cause the x-marked items to be selected. Only rows which are currently visible in the outliner will be selected.

Note: To apply commands to x-marked items they must first be selected. X-marks by themselves serve only to tag these items for future reference.

Locating X-marked Rows

X-marks can be specified as a search criteria when executing the **Edit > Find command**. To jump between x-marked series which are currently visible in the outliner use the **F5 key**. Press F5 to jump to the next x-marked series and SHIFT+F5 to jump to the previous x-marked series.

Removing X-marks

To remove any x-marks from all rows currently visible in the outliner use the **View > Remove X-marks command**

Series operations

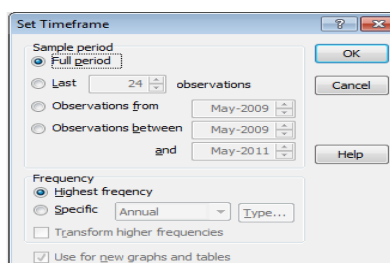
Time series often require some form of manipulation to make them suitable for a given purpose. Some of the series operations NZ Time Series allows you to perform include:

- Transforming the frequency of series, so that they match that of other series with which you are working
- Deriving percentage changes (or growth rates) from the original series data
- Converting series into an index, with a base value of 100 (or 1) in a time period you specify
- Adjusting a series for seasonal factors

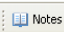
To perform one of these operations, first select the series (one or more) which you wish to manipulate in the Series Directory and then choose the corresponding command from the Series menu. In all cases the database retains the original series and derives new series based on those originals.

Timeframe of data

The Timeframe is used to focus on the sub-periods of the data. To use **Set Timeframe** use the **Options menu** or use the **Timeframe button** in the **Toolbar**. The **Timeframe** can be also adjusted while a graph or table is in the active window.



Database Notes

Notes about selected (active) database Topics or Sections can be obtained using the  button in the toolbar. The notes will appear in the main (centre) screen and can be printed.

Series data can be shown as Tables or Graphs.

Data Tables

Display a Data Table selecting one or more series in the Series Directory and choose:

- View →Data OR
- Data button on the toolbar OR
- Right click the mouse →Data

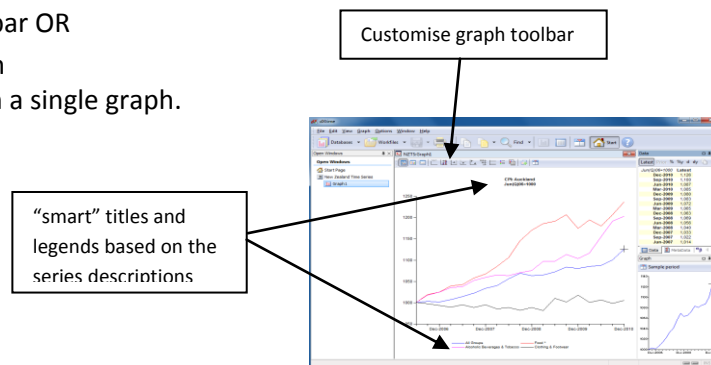
Description	Units	Sample
All Groups	Jun(Q)06=1000	Jun-1914: Dec-2010
New Zealand	CPIQ.SE9A	Jun-1914: Dec-2010
Jun-2004		935
Sep-2004		941
Dec-2004		949
Mar-2005		953
Jun-2005		952
Sep-2005		973
Dec-2005		979
Mar-2006		985
Jun-2006		1,000
Sep-2006		1,007
Dec-2006		1,005

Graphs

Display a Graph by selecting one or more series in the Series Directory and choose:

- View → Graph OR
- Graph button on the toolbar OR
- Right click mouse → Graph

Up to **12** series may be included in a single graph.



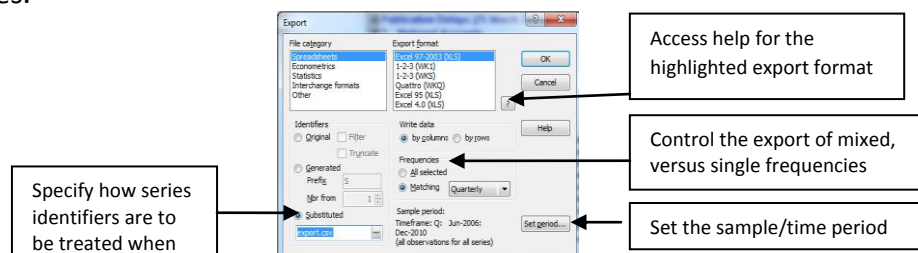
Customise graphs using the commands on the Graph menu or the special toolbar at the top of the Graph window. Some of the principle commands are:

- Type – change the type of graph
- Titles – “smart” titles are automatically created but these can be changed
- Fonts – select the fonts for the individual graph components
- Series – assign individual series to left or right axes, edit series legends, modify styles used to differentiate series in the graph
- Axes – control many of the display aspects of the graph: colours, content & positioning of the axis titles etc

Exporting and importing data

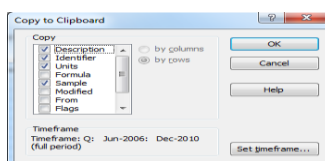
Exporting data

Data can be exported in a variety of formats and placed on the Windows Clipboard which enables transferring of time series to applications such as spreadsheets, word processors and statistical packages.



Copying Series data to the Clipboard

Allows series information, Data Tables and Graphs to be transferred directly to other Windows applications via the Windows Clipboard using **Edit → Copy to Clipboard**. The Copy to Clipboard dialog box lets you specify which categories of information should be placed in the Clipboard.

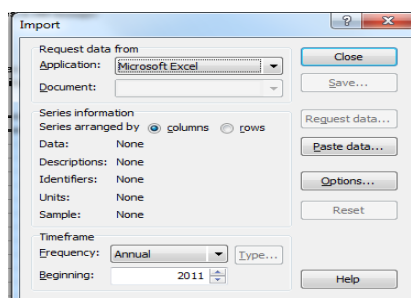


Importing data

The **File → Import** command allows data to be extracted from other Windows applications in dx format, using either the Windows Clipboard or Dynamic Data Exchange (DDE).

The Paste Data button in the Import dialog box allows series Observations, Descriptions, Identifiers, Unites and Dates to be progressively assembled by copying these sequentially to the Clipboard from the source application and pasting them into dXtime.

Use the NZ Time Series Help to assist importing data via the DDE option



How to Reference Tables and Graphs from NZ Time Series using APA 6th

If you include part of or a whole table or graph from NZ Time Series in your assignment you must acknowledge where you got it from.

A guide on how to reference tables & figures using APA 6th can be found under the Images tab in the Referencing-APA 6th guide from:

AUT Library website → Study Help → Referencing → APA 6th at AUT

OR by clicking on the link below:

<http://aut.ac.nz.libguides.com/content.php?pid=72586&sid=1810385>