

AKORANGA LEARNING CENTRE

The temporary Library, located in Building AB will be closed for a week from Monday 4 July until Sunday 10 July.

From Monday 4 July until Sunday 10 July the Akoranga collections will be moved into the new Learning Centre. There will be no access to the library print collections or library services at Akoranga during this time.

The Wellesley Learning Centre will be open at this time and staff and students can still access the e-library resources remotely via the Internet.

Staff or students who have a special need to access the Akoranga Library during the week of July 4 - 10 are asked to contact Carol Rea on 917 9999 ext 7262 or 8679 or via email as soon as possible.



On Monday 11 July the expanded and renovated Akoranga Learning Centre will open for business. The Library is looking forward to providing students and staff with access to integrated resources and services to support their learning, teaching and research needs in this upgraded facility.

Designed to be the hub of the Akoranga campus, the new Learning Centre is a high-tech, environmentally-friendly building with plenty of natural light and ventilation. The interior colour scheme was inspired by the natural beauty of the surrounding vegetation and scenery. This includes wonderful views across Bayswater to Rangitoto, from the top floor.

The Learning Centre will include:

- Open Access Computer Laboratory with 25 PCs and networked printers
- Information Literacy teaching laboratory with 20 PCs
- IT Help Desk for assistance with use of computer hardware and software, and for managing your Internet account
- Print and digital information resources to support learning, teaching and research needs
- Information Services Desk for help with finding information or using tools such as the library catalogue or online databases
- Postgraduate Research Centre with 9 PCs, study desks, a meeting area and kitchen facilities
- Open Access High Demand Collection for required readings and texts
- Lending Service Desk for borrowing materials held at Akoranga or elsewhere
- Four self-service photocopying machines and a Printsprint Service Desk for specialised copying, printing or binding requests
- Te Tari Awhinā - The Learning Development Centre for assistance with self-directed learning needs
- Study spaces to suit all learning styles, including five group study rooms, and a total of 384 seats.
- Parents Room for students when they are accompanied by children
- Adaptive Technology Room for students with special needs.

in this issue...

Pg 2 E-reserve Digitisation Project

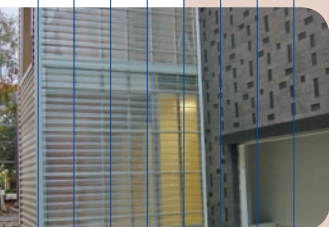
Visitors from Chile

Radio Frequency Identification

2004 Number One Customer in NZ

Pg 3 Introducing Google Scholar

Pg 4 Co-ord., Lending Services Positions
AUT Library Open Day
Multisearch Update AND MORE...



2004 Number One

Customer in NZ - Auckland University of Technology

CSA (Cambridge Scientific Abstracts), a leading publisher of bibliographic databases and print journals was founded in the late 1950s and specializes in publishing and distributing, both in print and electronically, over 100 bibliographic and full-text databases and journals in four

primary editorial areas: natural sciences, social sciences, arts & humanities, and technology. Brad Rosairo, CSA's Director in Australia, New Zealand, South Africa and South Pacific, recently announced that with the subscription to the SAGE Collection in 2004,

Auckland University of Technology is now CSA's biggest academic customer in New Zealand. On 5 April 2005 Brad and Kevin Serpanchy, Regional Sales Manager for CSA presented Ainslie Dewe, AUT University Librarian and Director of Knowledge Management with a crystal trophy to acknowledge this achievement.

Auckland University of Technology Library currently subscribes to the following CSA databases:

1. LLBA - Linguistics and Language Behaviour Abstracts
2. ANTE - Abstracts in New Technologies and Engineering
3. ASFA - Aquatic Science and Fisheries Abstracts
4. ARTbibliographics Modern
5. Avery Index to Architectural Periodicals
6. Sociological Abstracts
7. CSA Technology Research Database
8. DAAI - Design and Applied Arts Index
9. SAGE Full-Text Collection Communications
10. SAGE Full-Text Collection Sociology
11. SAGE Full-Text Collection Material Science
12. SAGE Full-Text Collection Education
13. SAGE Full-Text Collection Management and Organizational Studies



From left to right: Kevin Serpanchy, CSA Regional Sales Manager, Brad Rosairo, CSA Director, Ainslie Dewe, AUT University Librarian, Heather Jenks, AUT Associate University Librarian

E-reserve Digitisation Project

There are now over 800 items available electronically in the Course Reserve Collection.

During 2004 staff from the Delivery Team worked on a pilot project for E-Reserve. They assessed workflows, copyright compliance, secure server capacity and resourcing implications. Photocopied articles held in the course reserve collection were retrospectively digitised, and there are now over 800 items available electronically. We are now delighted to announce the full implementation of this service.

E-Reserve items can be located on the catalogue by searching "Course Reserve". Search options are lecturer, department or paper number. E-Reserve allows students and staff to access online materials 24 x 7 from their own computer, or anywhere on campus.

Please consult the Library home page for the E-Reserve policy and guidelines. On-line request forms are available by selecting "Arranging for items to be placed on Course Reserve" from "Resources for courses" at:

http://www.aut.ac.nz/library/library_services/academic_staff.shtml

Radio Frequency Identification (RFID)

With the move into the new Akoranga Learning Centre, the Library is introducing RFID technology for stock control. By using RFID the library can identify and track materials, without the need for "line of sight" scanning by barcodes.

RFID technology has the following advantages:

- Streamlines the lending process
- Allows for self-service check-out of loans by library patrons
- Significantly reduces materials handling time and labour costs
- Supports theft detection
- Enables efficient inventory, or stocktaking, of the collections
- Enhances ability to shelf-read and keep materials in order on the shelves
- Improves ability to locate wanted items that may be mis-shelved
- Provides ability to identify and locate material for many other purposes

This is an exciting new development for the Library that should result in improvements to customer service over time. If the RFID technology proves to be cost beneficial then the same technology will be introduced into the Wellesley Learning Centre in due course.

Visitors from Universidad Catolica Del Maule Talca, Chile



From left: Gloria Rojas, Erin Foster, Miguel Mendez, Mark Simmonds

Miguel Mendez, Project Manager and Gloria Rojas, Chief Librarian spent time in the Library as part of their month long study visit to AUT. They enjoyed a tour of the Learning Centre at Wellesley and also paid a visit to the Akoranga Learning Centre.

They were particularly interested in the Library System, Electronic Resources and Information Literacy, and were impressed with the Information Literacy Online Tutorial available to our students. They saw the value of introducing a similar tool in their university. Miguel and Gloria attended a number of Information Literacy tutorials and met with various staff to discuss the Voyager library system in place at AUT, pre-processing of library resources and electronic resources.

Introducing Google Scholar

Anyone searching Google for scholarly information will know the frustration at often retrieving irrelevant results from a myriad of sources.

A new, more specialised form of Google has been developed called 'Google Scholar' (GS). This new search engine purports to search 'scholarly' literature. The GS definition of scholarly literature indexed includes traditional scholarly works such as peer-reviewed papers, theses, books, pre-prints, abstracts, and technical reports.

Good quality academic information is largely invisible on the web and often 'locked up' in Library or institutional subscriptions. GS in partnership with publishers will index publisher-released material that aims to at least include a citation and an abstract.

Recently, Google decided to allow libraries or institutions to use openURL link resolvers to allow linking from GS results (citation and abstract) to library holdings. Therefore, if fulltext is available online, users affiliated to an institution that subscribes to that resource, may be linked through to the electronic form of the article or piece of work. This has potential for providing a rewarding experience whereby a user conducts a search in a simple, quick responding, search engine.

At AUT we use a link resolver called LinkFinderPlus. We hope that in the future, when you use GS on campus, you may be able to link through to a fulltext journal article covered by an AUT Library subscription. Off-campus, you may have to set the GS preferences to include being able to link through to AUT Library subscribed resources. These features have yet to be implemented and tested by AUT Library for AUT users.

A specialist feature of GS is that the results list also includes 'Cited by' links. Following a 'Cited by' link leads to related literature that cites or refers to, the original publication. (It is important to note that this feature is not as comprehensive as the 'Cited Reference' search feature on the 'Web of Science' database in the AUT e-Library.)

Results are analysed and bibliographic citations extracted and presented as separate results.

Document references they link to may not be available online in fulltext, e.g. older, seminal works not yet digitised or in book format.

Another initiative is Google's partnership with OCLC (Online Computer Library Center) in the United States. This collaboration enables GS to harvest metadata about books from the Open WorldCat database. Search results will link through to the Open WorldCat "Find in a Library" interface. Users can locate items by city, region or country by selecting geographic location. This pilot currently only included a small proportion of the OCLC records for searching. AUT holdings may be included in the future.

In summary, GS is an information retrieval tool worth keeping an eye on and as long as you are aware of the pitfalls, is worth exploring.

Limitations to be aware of:

- GS is not comprehensive. (Always check 'multisearch' and/or 'Databases' in 'e-Library' on the AUT Library website.)
- Results on GS do not necessarily lead to electronic fulltext. (Check AUT Library Catalogue on the AUT Library website for journal titles, which we may hold electronically or in print.)
- Always be critical. 'Scholarly' results may not be as academic as Google intended. (Evaluate, evaluate!)
- Results may include early drafts or research that may have been published subsequently and not indexed on GS. GS is still in a Beta testing phase.

Google Scholar is not linked directly from the current Google start page.

Test it for yourself at: <http://scholar.google.com>

Readings: About Google Scholar. (2005).

Page Retrieved May 11, 2005, from

Busch, L. (2004). Using Google Scholar. Emery Library. Retrieved May 11, 2005, from



CO-ORDINATOR, LENDING SERVICES POSITIONS

Jane Brodie and Andrew Stewart have recently been appointed to the two newly created positions of Co-ordinator, Lending Services. They are responsible for Library lending operations at both the Akoranga and Wellesley campuses primarily outside of the core business hours.

These positions are important in ensuring that Library patrons receive a consistent level of service during the full span of Library opening hours.

Either Jane or Andrew is available to deal with policy matters, lending services issues and problems with Library facilities. Their other duties include the training of part-time Student Library Assistants, overseeing the prompt and accurate reshelving of resources, and reporting any maintenance issues.

AUT LIBRARY OPEN DAY



From left: Jasna Romic and Erin Foster

On Open Day AUT Library ran virtual tours of its 24/7 e-Library. This is the first year the Library has taken a display stand during the Open Day event. Next year the Library is looking forward to making the display more vibrant and interactive with a lot more handy giveaways.

MULTISEARCH UPDATE

Launched in early April, this pilot project has already caught the attention of many students and staff. Statistics for the first three weeks indicate that multisearch has had significant use. Feedback from students and staff has reflected a positive impression of this tool's speed and efficiency.



multisearch is a search interface which enables users to enter a single search into several different Library-subscribed databases. This exposes anyone using multisearch to more resources, particularly more fulltext journals.

NEW DATABASES...

Technology Research Database (TDR) The following databases are available from the single TDR access point: the CSA Materials Research Database with METADEX, CSA High Technology Research Database with Aerospace, and the CSA Engineering Research Database. Over 4,000 sources are indexed including periodicals, conference proceedings, technical reports, trade literature, patents, books, and press releases.

Humana Journals provides complete full text coverage of 19 journals titles from Humana Press. Humana Press publishes in the subject areas of molecular biology, neuroscience, endocrinology, cancer research, and medicine.

MIDIRS (Midwives Information and Resource Service) contains over 100,000 records with abstracts. The database covers over 550 journals and contains information on all aspects of midwifery, pregnancy, childbirth, the newborn, and maternity services. The service also collects statistics, government and official reports, books, conference proceedings, newspaper articles, and consumer information leaflets. *Please note that this database is password accessible only. To obtain the login and password phone extn 7709 or ask at the Library i-desk*

NAMTA Montessori Bibliography and Research Guide is produced by the North American Montessori Teachers' Association. This database contains more than 14,000 citations from over 50 Montessori periodicals starting from 1909. Incorporating Montessori citations from 23 other indexes the coverage includes journals, popular magazines, newspapers, books and dissertations. *Please note that this database is password accessible only. To obtain the login and password phone extn 7709 or ask at the Library i-desk*

OPENING HOURS

During the last 4 weeks of each semester the Library will extend the opening hours:

Monday to Thursday 8.00am - 11.00pm

Friday 8.00am - 10.00pm

Saturday, Sunday and the two public holidays

(Queen's Birthday and Labour Day) 10.00am - 10.00pm

The full list of Library opening hours can be viewed at http://www.aut.ac.nz/library/library_services/opening_hours.shtml